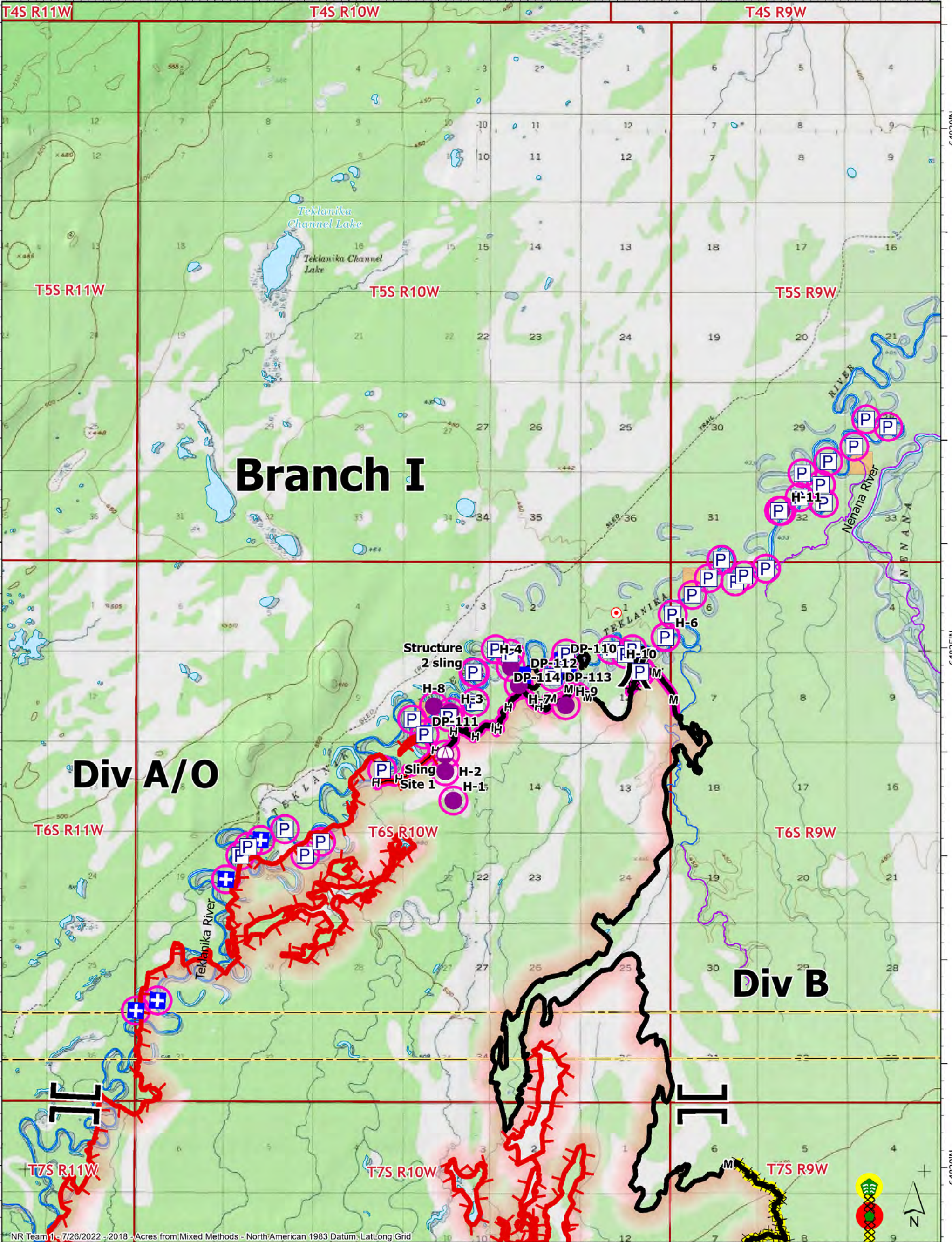


149°40'W 149°35'W 149°30'W 149°25'W 149°20'W



**SUPPRESSION REPAIR**

**Branch I**

72,185 acres on 07/23/2022 @ 2100



**Repair Status**

- In Use - Fire Management
- Repair Needed
- Completed - Ready for Inspection
- No Repair Needed

- In Use - Fire Management
- Repair Needed
- Completed - Ready for Inspection
- Pump
- Helispot

- Sling Site
- X Division Break
- I Branch Break
- + Medical
- + Drop Point
- Hot Spot - Spot Fire

- + Stream Crossing
- + Repair Point
- X Completed Dozer Line
- ^ Completed Fuel Break

- H Completed Hand Line
- M Completed Mixed Construction Line
- Anadromous Spawning
- Other Anadromous Habitat

- Contained
- Uncontained
- Wildfire Daily Fire Perimeter
- BIA (Native Allotment)
- Borough

0 1 2 Miles