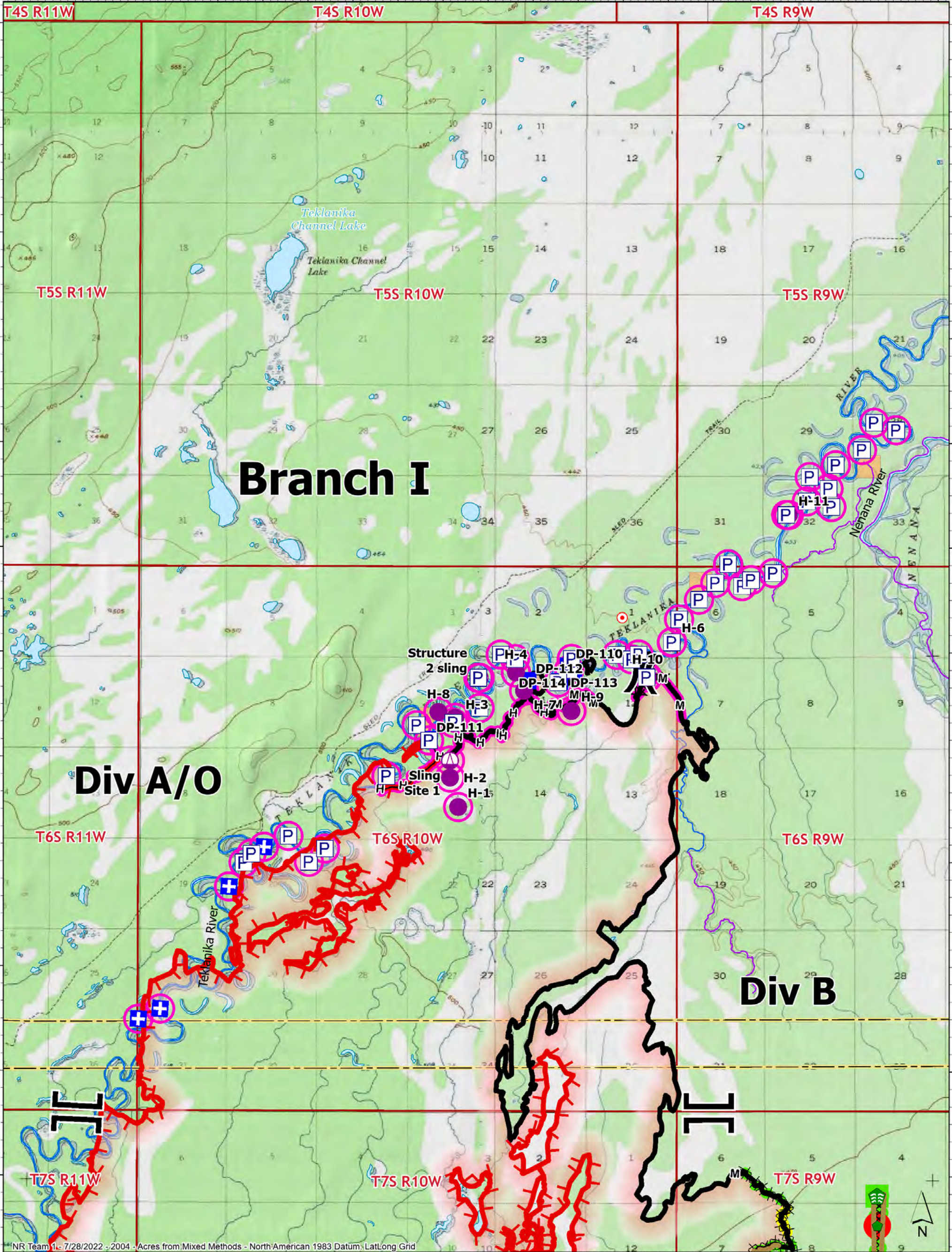


149°40'W 149°35'W 149°30'W 149°25'W 149°20'W



SUPPRESSION REPAIR

Branch I

72,191 acres on 07/27/2022 @ 2100



- Repair Status**
- In Use - Fire Management
 - Completed - Ready for Inspection
 - Completed - Inspected
 - No Repair Needed

- In Use - Fire Management
- Repair Needed
- Completed - Inspected
- Pump
- Helispot

- Sling Site
- Division Break
- Branch Break
- Medical
- Drop Point
- Hot Spot - Spot Fire

- Stream Crossing
- Repair Point
- Completed Dozer Line
- Completed Fuel Break
- Completed Hand Line

- Completed Mixed Construction Line
- Repair Line
- Anadromous Spawning
- Other Anadromous Habitat
- Contained

- Uncontained
- Wildfire Daily Fire Perimeter
- BIA (Native Allotment)
- Borough

Miles 0 1 2