

ORGANIZATION ASSIGNMENT LIST (ICS 203)

1. Incident Name: MINTO LAKES FIRE		2. Operational Period: Date From: 7/12/2022 Time From: 0800		Date To: 7/13/2022 Time To: 0800	
3. Incident Commander(s) and Command Staff:			7. Operation Section:		
IC/UC's	JERRY MCGOWAN	Operations	CHRIS CHILDERS, KERRI WILLIAMSON (t)		
Deputy	KEN KEMPTER	Planning Operations	ROBERT LAENG, TRAVIS THANE (t)		
Safety Officer	JOHN NICKEY	Night Ops			
Information Officer	KRISTEN ALLISON	Staging Area			
Liaison Officer	CELESTE PRESCOTT, DARREL MILLER (t)	Division/Group	ALPHA	GARY MONDAY	
4. Agency/Organization Representatives:		Division/Group			
Agency/Organization	Name	Division/Group			
AK DIV OF FORESTRY	JEREMY DOUSE	Division/Group	ZULU	TREVOR JOHNSON	
AK DIV OF FORESTRY	GORDON AMUNDSON	Division/Group			
BLM	TIM HAMMOND	Division/Group			
ANCSA	JUSTIN RAY	Division/Group	TANGO	PAUL JOHNSON	
BIA	LYNN POLACCA	Division/Group			
		Division/Group			
		Division/Group	HOTEL	LUIS DOZAL	
		Division/Group			
		Division/Group	ECHO	UNSTAFFED	
		Division/Group			
		Division/Group	SECURITY	CAM GONZALEZ	
		Division/Group			
5. Planning Section:		Division/Group			
Chief	ROBERT BURNSIDE, DAN FUHRMAN	Division/Group			
Deputy		Division/Group			
Resource Unit	JOSE ABASOLO	Division/Group			
Situation Unit	JONATHAN ROBERTS	Division/Group			
Documentation Unit	MICHELLE HALE	Division/Group			
Demobilization Unit	JUSTIN SAIZ	Division/Group			
GISS	M HANS, J ROBERTS, D BEASLEY (t)	Division/Group			
FBAN	PATRICK DOYLE	Division/Group			
IMET	BRENT BOWER, JONATHAN CHRIEST (t)	Division/Group			
Training Tech Spec	ROBERT RIVELLE (virtual)	Air Operations Branch			
		Air Operations Branch Director	ROCCO TERRACCIANO, CATHERINE EURBIN (t)		
		Air Tactical Group Supervisor			
6. Logistics Section		Helibase Manager			
Chief	DAN TURNER, RICH DAVIS, JERRI WEBSTER				
Supply Unit	SARA FELIX, MANI BOUSLAUGH	8. Finance/Administration Section:			
Facilities Unit	NICK SABLAN, MALDO NAVARRO	Chief	RENE WHITE		
Ground Support Unit	DAVID TRUSSELL, DOUG POPWELL	Time Unit	RENEE SMITH, TERESA RENIFF		
Communications Unit	KODY KERWIN, MATTHEW NILSEN	Procurement Unit	PAUL WOOD (virtual)		
Medical Unit	MATT VIERRA, MELLISSA CONWAY (t)	Comp/Claims Unit	JODI GOVER		
FDUL	SAM KATANICH, DOUG WYNN	Cost Unit	LEE PIPER		
Prepared By: Name: DAN FUHRMAN		Position/Title:	PSC1		Signature: 
ICS 203		Date/Time:	7/11/2022 2300 hours		



Minto Lakes Fire Weather Forecast



Forecast Number: 14
Divisions: All
Shift Date: 07/12/2022 0800 - 07/13/2022 0800

Incident Meteorologist: Jonathan Christ (T)
/s/ Jonathan Christ
Forecast Issued: 1900 July 11th, 2022

WEATHER DISCUSSION:

Lingering showers and areas of fog this morning will taper off and lift through mid morning. There is just a slight chance of an afternoon shower or thunderstorm today. Any showers and thunderstorms that do form will not be nearly as strong as the past two days. West winds over ridgetops will pick up in the late evening and overnight ahead of an approaching cold front, becoming NW at 10-15 mph by morning. High temperatures will be in the low 70s with minimum relative humidities mostly in the 40s. Smoky conditions will continue.

WEATHER FORECAST FOR TUESDAY: Mostly clear skies with smoke and haze. Isolated showers and thunderstorms in the afternoon.

TEMPERATURES: Ridge Top: Highs: 68-72
Slope/Valley: Highs: 70-73

HUMIDITY: Ridge Top: Min: 42-47 %
Slope/Valley: Min: 38-44 %

20 FT WINDS: Ridge Top: Nearly calm early, becoming west 3-7 mph in the afternoon.
Slope/Valley: Downslope 1-3 mph in the morning, becoming southwest 3-7 mph in the afternoon.

CHANCE OF WETTING RAIN: 10 % - LAL: 2 - FFMC: 72 - 74
STABILITY/INVERSION: Inversion will break by 1400 as mixing heights rise to 5000 feet AGL.

WEATHER FORECAST TUESDAY NIGHT: Partly cloudy with smoke and haze.

TEMPERATURES: Ridge Top: Lows: 49-52
Slope/Valley: Lows: 51-54

HUMIDITY: Ridge Top: Max: 78-84 %
Slope/Valley: Max: 85-95 %

20 FT WINDS: Ridge Top: West winds 3-7 mph in the evening becoming NW and increasing to 10-15 mph by the early morning hours.
Slope/Valley: Southwest winds 3-7 mph in the evening increasing to 5-10 mph by the early morning hours.

CHANCE OF WETTING RAIN: 10% - LAL: 1
STABILITY/INVERSION: Weak inversion forming after midnight with fair dispersion.

Extended Forecast:

A cold front will arrive early Wednesday morning and bring cooler temperatures and widespread rainfall around 0.1" to the entire fire area. West winds 5-15 mph with gusts to 20 mph will continue through the afternoon with the strongest winds over the ridgetops. Despite the wind, the smoky conditions will persist due to a number of fires to the west. Precipitation will end Wednesday afternoon, though temperatures will remain cool with damp relative humidities until additional precipitation is possible over the weekend.



Murphy Dome
RAWS



Chatanika
RAWS



Drop Point 73
RAWS



NEW Drop Point 54
RAWS

FIRE BEHAVIOR FORECAST

FORECAST NUMBER: 12	TYPE OF FIRE: Wildfire
FIRE NAME: Minto Lakes	OPERATIONAL PERIOD: 7/12-7/13/2022, 0800-0800
DATE ISSUED: 7/11/2022	TIME ISSUED: 1900
UNIT: AK-FAS	SIGNED: <i>PD</i> Patrick Doyle - FBAN

INPUTS

If you have Fire Behavior or Wx Observations, please take a picture and text to me with location. Thx! Patrick Doyle, cell # 530-310-3552

WEATHER SUMMARY:

Temps: High 60s to mid 70s; **RH:** High 30s to high 40s; **LAL** 2; **CWR** 10%
Winds: Calm AM turning west 3-7mph in the afternoon.

see IMET Fire Weather Forecast

OUTPUTS

FIRE BEHAVIOR

GENERAL:

Overall, little fire activity and conditions not conducive for any spotting or rapid rates of spread. Any residual heat holding in deep duff or heavy dead and down wood will be little affected by precipitation, unless long sustained precipitation occurs (>1").

Expect 3-4 days of reduced activity since last precipitation before drying and fine fuel moisture code (similar to probability of ignition combined with 1-10hr time-lag dead fuel moistures) rises enough to a level where fuels are readily available and active again. Only if there is no precipitation during that time. Any precipitation will extend this time.

Fire Danger Indices (CFFDRS)	Today's (Projected)	Trend	Interpretation
Fine Fuel Moisture Code (FFMC):	73.2 (low)	down 7	<i>Below 74, little chance of ignition or surface fire spread with an open flame.</i> Active spread in light fuels at 80. Ignition potential high at 90 and extreme fire behavior expected at 92.
Build-up Index (BUI):	59 (moderate)	down 38	Fuel availability and flammability. Seasonal severity. Used in Fire Behavior Predictions.

Fuel Type (FBS)	5 mph wind (*head-fire)	10 mph wind*	20 mph wind (T-storm outflow)*
Black Spruce (C-2)	ROS: 2-3 ch/hr	ROS: 3-6 ch/hr	ROS: 10-18 ch/hr
Mixed Hardwood w/50% Spruce (M-2)	ROS: 1-2 ch/hr	ROS: 1-3 ch/hr	ROS: 5-10 ch/hr
Old Burn Scars (O-1b) 50% cured, 0 t/a	ROS: 0-1 ch/hr	ROS: 0-1 ch/hr	ROS: 2-3 ch/hr

Note: 80 chains (ch) in a mile (mi); chain (ch) is 66 feet (ft).

Important thresholds:		
Critical Fire Weather (Temp/Rh) - rapid spread & crown fire	greater than 80° F	less than 30% Rh
CFFDRS Indices - Correlated Large Fire Growth	greater than 88 FFMC	greater than 80 BUI

SPECIFIC:

DIV-A (SW Corner of Fire): Minimal fire activity throughout the division.

Div-E, H (North Flank of fire): Some residual heat is still evident in Washington and Aggie Ck drainages. Most active spread between Washington creek and Tatalina river in boggy meskag, near the Tatalina river.

Div-Z, T (East flank): Minimal fire activity throughout the division. Do not expect backing and flanking will continue in mixed hardwood stands that are more open or with greater than 50% spruce component.

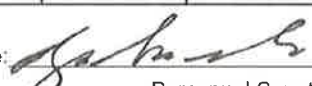
AIR OPERATIONS: Smoke (varies) may limit air operations.

SAFETY

Watch out for trees and overhead hazards that are in burn area that may have been weakened or left hung-up in other trees that are a potential hazardous.

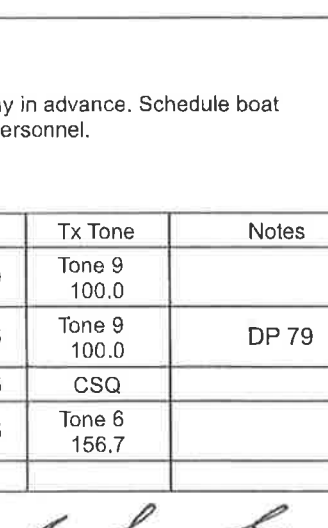
ASSIGNMENT LIST (ICS 204 WF)

CONTROLLED UNCLASSIFIED
INFORMATION//BASIC

1. Incident Name: MINTO LAKES FIRE		2. Operational Period: Date From: 07/12/22 Date To: 07/13/22 Time From: 0800 Time To: 0800		3. Branch A		Division Alpha	
4. Operations Personnel: Operations Section Chief: CHRIS CHILDERS, KERRI WILLIAMSON (t) Branch Director: Division/Group Supervisor: GARY MONDAY				Night Ops: Branch Safety: Air Attack:			
5. Resources Assigned:		** Resources Below in Bold are 12 Hour **					
Resource Identifier	ALS	LWD	Leader	Personnel	Request #	Hours	Reporting Location
CRW2IA NPF FSR 1 - ALPHA PH# 881651413616549		7/17	Aaron Murdock	20	C-3	0800-2100	DP 2
WFM1 TETON - ALPHA PH# 881651423616		7/16	Eric Hawes	11	O-34	0800-2100	DP 2
TBOT MASEK		7/25	Jim Masek	1	E-8	0800-2100	DP 2
TBOT MILLER <i>Days off 7/16</i>		7/22	Gabe Miller	1	E-70	0800-2100	DP 2
TBOT CHAMBLEE		7/23	Myron Chamblee	1	E-178	0800-2100	DP 2
TBOT WIEBE		7/23	Greg Wiebe	1	E-179	0800-2100	DP 2
WTS2 TWIN SPRINGS 1		7/19	Robin wood	2	E-150	0800-2100	DP 2
WTS2 APLUSTILL		7/25	Tony Aplustill	2	E-176	0800-2100	DP 2
TFLD RUSSELL		7/16	Russell, Kathleen	1	O-9	0800-2100	DP 2
TFLD KNIGHTON		7/12	Duane Knighton	1	O-26	0800-2100	DP 2
TFLD RAMEY (t)		7/15	Josh Ramey	1	O-37.44	0800-2100	DP 2
TFLD ZAVALLA <i>extension 7/23</i>		7/17	Anthony Zavalla	1	O-66	0800-2100	DP 2
EMTF WAGNER-JONES <i>off 2 days</i>		7/12	Amelia Wagner-Jones	1	O-32	0800-2100	DP 2
EMTF CREEK		7/23	Isaac Creek	1	O-98	0800-2100	DP 2
TBOT		7/25			E-12		
6. Work Assignments: TASK: Monitor fire behavior and perform point protection around structures and allotments. Mop up to the extent necessary to minimize the likelihood of an escape and to secure value at risk. PURPOSE: Fire effects and suppression damage are minimized. END STATE: Damage to values at risk and suppression repair needs are avoided.							
7. Special Instructions: Pre-identify resources for initial attack inside and outside of TFR. All non-operational boat transportation on the Chatanika River needs to be scheduled at least one day in advance. Schedule boat transportation with Planning Ops. Fireline PPE is required, as well as escorts for non-redcarded personnel Backhaul trash and any unused surplus equipment.							
8. Communications							
Name	Ch	Function	Rx Freq	Rx Tone	Tx Freq	Tx Tone	Notes
TACTICAL	TAC 1		168.0500	Tone 9 100.0	168.0500	Tone 9 100.0	
COMMAND	CMD 7		170.4250	Tone 9 100.0	168.0750	Tone 9 100.0	DP1
AIR-to-GROUND	A/G 1		166.6125	CSQ	166.6125	CSQ	
AIR-to-GROUND	VTAC14	MEDEVAC	159.4725	CSQ	159.4725	Tone 6 156.7	
9. Prepared by: Name: JOSE ABASOLO			RESL		Signature: 		
ICS 204		Date/Time: 7/11/2022		2200	Personnel Count: 45		

ASSIGNMENT LIST (ICS 204 WF)

CONTROLLED UNCLASSIFIED
INFORMATION//BASIC

1. Incident Name: MINTO LAKES FIRE		2. Operational Period: Date From: 07/12/22 Date To: 07/13/22 Time From: 0800 Time To: 0800				3. Branch H		Division Hotel	
4. Operations Personnel: Operations Section Chief: CHRIS CHILDERS, KERRI WILLIAMSON (t) Branch Director: Division/Group Supervisor: LUIS DOZAL						Night Ops: Branch Safety: Air Attack:			
5. Resources Assigned:		** Resources Below in Bold are 12 Hour **							
Resource Identifier	ALS	LWD	Leader	Personnel	Request #	Hours	Reporting Location		
**DIVS CERVANTES		7/15	John Cervantes	1	O-61	0800-2100	DP 73		
**DIVS PEYKETEWA (t)		7/14	Peyketewa, Clybert	1	O-87	0800-2100	DP 73		
**CR2IA METHOW		7/25	Chad Bresnahan	20	C-21	0800-2100	ICP		
**CR2IA UMF VET		8/1	Samuel Bowen	19	C-22	0800-2100	ICP		
**ENG6 AK 62		7/15 7/17	Mark Bollinger	3	E-100	0800-2100	DP 73		
**ENG4 AK 43		7/17	Lowden Perkins	3	E-101	0800-2100	DP 73		
**ENG6 BIG STATE WILDFIRE		7/15	Louis Silas	2	E-1	0800-2100	DP 73		
DOZ2 GILLMORE		7/19	Robert Gillmore	2	E-58	0800-2100	DP 73		
DOZ2 LANAGIN <i>RELEASE 7/12</i>		7/15	Walter Lanigan	1	E-59	0800-2100	DP 73		
DOZ2 BROWN <i>RELEASE 7/12</i>		7/15	Lane Brown	1	E-60	0800-2100	DP 73		
DOZ2 NORTHLAND WOOD		7/20	Herb Baxter	1	E-61	0800-2100	DP 73		
VAMP GILLMORE		7/17	Clark Munds	1	E-138	0800-2100	DP 73		
VAMP FAIRBANKS		7/17	Richard Tonsgard	1	E-139	0800-2100	DP 73		
TFLD DAVIS		7/14 7/15	Jake Davis	1	O-65	0800-2100	DP 73		
HEQB MCGRATH		7/15 7/14	Chris McGrath	1	O-41	0800-2100	DP 73		
HEQB COUNTRYMAN		7/13	Jesse Countryman	1	O-42	0800-2100	DP 73		
HEQB CHARLTON		7/14	Mark Charlton	1	O-43	0800-2100	DP 73		
HEQB GLICK		7/20	Jonas Glick	1	O-44	0800-2100	DP 73		
6. Work Assignments: TASK: Initiate suppression repair where conditions allow. PURPOSE: Eliminate environmental resource impacts caused by suppression tactics minimize. END STATE: Return the area to as natural condition as possible.									
7. Special Instructions: ** Pre-identified resources for initial attack inside and outside of TFR. All non-operational boat transportation on the Chatanika River needs to be scheduled as least one day in advance. Schedule boat transportation with the Planning Ops. Fireline PPE is required, as well as escorts for non-redcarded personnel. Backhaul trash and any unused surplus equipment.									
8. Communications									
Name	Ch	Function	Rx Freq	Rx Tone	Tx Freq	Tx Tone	Notes		
TACTICAL	TAC 4		166.7250	Tone 9 100.00	166.7250	Tone 9 100.0			
COMMAND	CMD 9		172.4625	Tone 9 100.00	169.8125	Tone 9 100.0	DP 79		
AIR-to-GROUND	A/G 1		166.6125	CSQ	166.6125	CSQ			
AIR-to-GROUND	VTAC14	MEDEVAC	159.4725	CSQ	159.4725	Tone 6 156.7			
9. Prepared by: Name: JOSE ABASOLO RESL									
Signature: 									
ICS 204		Date/Time: 7/11/2022 2200				Personnel Count: 61			

AIR OPERATIONS SUMMARY 220	Prepared By: Catherine Eurbin	Prepared: 07/11/2022	Prepared Time: 1900
1. INCIDENT NAME: MINTO LAKES	2. OPERATIONAL PERIOD 07/12/2020	START TIME: 0900	END TIME: 2200
		SUNRISE: 03:43	SUNSET: 00:10

3. REMARKS (Safety Notes, Hazards, Air Operations Special Equipment, etc.):

4. READY ALERT AIRCRAFT:

Medevac
State Patrol

Order through 911
See Medical Plan in the IAP

5. TFR
2/9414(A-18)
0900-2400 until 7/29/22

6. PERSONNEL	NAME	PHONE #	7. FREQUENCIES	AM	FM	8. FIXED-WING Avail/ Type/ Make-Model/ N#/ Base
AOBD	Rocco Terracciano(O-37)	951-333-7458	A/A (Fixed)			AIRTANKERS: AS NEEDED
AOBD (t)	Catherine Eurbin (O-37)	661-917-3687	A/A (Rotor)	126.350 (A-26)		ATGS Platforms: Air Attack (A-22) – 7MZ Jay Carl -Assigned.
ATGS			A/G Primary		166.6125 RX/TX	TFR FREQ. 126.350
HEBM	Dan Quinones (O-145)	541-771-0052	A/G Secondary			
HEBM (AFS)	Ryan Reed	435-210-0043				
						Helibase LADD Ketchum Rd, North Ploe, AK 99705 N 64.84057 X W147.58582
						Helibase AFS 3700 Airport Way, Fairbanks, AK. 99709 N 64.8395963 X W 147.8176663
			National Flight Following		168.6500 RX/TX (T1 110.9)	
			Air Guard		168.6250 (T1 110.9 RX/TX)	





9. HELICOPTERS (Use Additional Sheets as Necessary)

FAA N#	T Y	MAKE/ MODEL	BASE	START	AVAIL	REMARKS	FAA N#	TY	MAKE/ MODEL	BASE	START	AVAIL	REMARKS
17HX(A-2)	2	Bell 205 A1++	LADD	1000	2200	Bucket/Longline							
205BD (A-14)	2	Bell 205A1++	LADD	1200	2200	Bucket/Longline							
618ME (A-19)	3	407				Enroute							

10. TASK/ MISSION/ ASSIGNMENT (Type/ function includes: Air Tactical, Retardant, Recon, Personnel Transport, Bucket Operations, SAR, etc.)		FLY FROM	FLY TO
TYPE/FUNCTION	PRIORITY	MISSION START	
	NAME OF PERSONNEL OR CARGO (if applicable) or instructions for tactical aircraft		
Initial Attack	Request Air Attack through Air Operations	0900	Fire
Medevac	Support initial Attack actions as requested.	TBD	IA
Water Drops / Sling Loads	** See Medical Plan in IAP – Review during Division Breakouts**	TBD	Fire
Recon	As needed and approved by OPS, order direct through Helibase	0900	Fire
	Fire reconnaissance by Ops.	TBD	Fire

Wind Restrictions

Flights above ground level	Flight Permitted in Winds		
	Less than / Maximum Gust Spread	Type 2 Helicopters	Type 3 Helicopters
More than 500' AGL	<50kts / Gusts: N/A	<50kts / Gusts: N/A	<50kts / Gusts: N/A
Less than 500' AGL	<40kts / Max Gust Spread: 15kts	<40 kts / Max Gust Spread: 15kts	<30kts / Max Gust Spread: 15kts

Helicopter #	Type	Manager Name	Phone Number	Helicopter #	Type	Manager Name	Phone Number
17HX	2	Mike Mallozzi	928-710-1686				
205BD	2	Russel Griffith	541-740-7637				
		Jeremy Schwandt	208-948-3924				

Approved by: /s/ Rocco Terracciano, AOB

Incident:
Minto Lakes Fire AF-FAS-211349

Date:
7-12-2022 to 7-13-2022

Operational Period:
0800-0800



SAFETY MESSAGE



Fire fighter safety comes first on every fire, every time

Major Hazards and Risks

Health and Wellness: Make sure you hydrate during the entire shift and make time for meal breaks. Wash your hands before meals, if someone on your crew is sick see medical for meds and use disinfecting wipes and/or disinfecting sprays on equipment and vehicles. Do not share food or liquids. Try not to spread the camp crud and/or colds. Get your crews well rested after each shift.

Wildlife Hazards – Be watchful for Bears, and Moose. Don't leave food out visible and haul out your trash daily. Work in groups and make noise.

Winds Forecasted- Working under Spruce Trees watch for shallow root systems during any wind conditions. While mopping up make sure you have a lookout and have a plan in place for potential trees falling over.

FATIGUE

- Extended assignments can lead to a “slow burn” in fatigue.
 - This “slow burn” is an accumulation of low to moderate fatigue over several days on an incident(s).
 - This is more prevalent in the later days of an incident and can lead to complacency.
 - Monitor and maintain work-to-rest ratios.
 - Look out for each other.

UTV Use

- 91% of UTV accidents victims are not wearing seatbelts
- Passengers are limited to number of seats installed by manufacturer.
- Cargo loads shall be loaded and secured as not to affect the vehicle center of gravity.
- Carrying capacity shall not exceed manufacturer's recommendations.
- When transporting external fuel containers 5-pound class BC fire extinguisher must be secured to the vehicle.
- All tools or equipment must be securely attached to the vehicle to prevent loose cargo.

Safety Officers: John Nickey SOF1

CONTROLLED CLASSIFIED INFORMATION/BASIC

Utilization of any frequency other than those listed on this form are prohibited, subject to fines by the FCC and demobilization from the incident.

Zn Ch	Function	Channel Name/Trunked Radio System Talkgroup	Assignment	RX Freq	N or W	RX Tone/NAC	TX Freq	N or W	Tx Tone/NAC	Dev	Pwr	Mode A, D or M	Remarks
1	TACTICAL	TAC 1	DIV A	168.0500		Tone 9 100.0	168.0500		Tone 9 100.0	N	H	A	
2	TACTICAL	TAC 2	DIV Z	168.2000		Tone 9 100.0	168.2000		Tone 9 100.0	N	H	A	
3	TACTICAL	TAC 3	DIV T	168.6000		Tone 9 100.0	168.6000		Tone 9 100.0	N	H	A	
4	TACTICAL	TAC 4	DIV H	166.7250		Tone 9 100.0	166.7250		Tone 9 100.0	N	H	A	
5	TACTICAL	TAC 5	TBD	166.7750		Tone 9 100.0	166.7750		Tone 9 100.0	N	H	A	
6													
7	COMMAND	CMD 7	ALL BRANCHES	170.4250		Tone 9 100.0	168.0750		Tone 9 100.0	N	H	A	DP1
8	COMMAND	CMD 8	ALL BRANCHES	170.4125		Tone 9 100.0	165.9625		Tone 9 100.0	N	H	A	H1
9	COMMAND	CMD 9	ALL BRANCHES	172.4625		Tone 9 100.0	169.8125		Tone 9 100.0	N	H	A	DP 79
10	LOCAL DISP	ESTER	ALL BRANCHES	151.2650		TONE : DPL 4CE	159.2700		TONE : DPL 4CE	N	H	D	
11	Air-to-Ground	A/G CMD	ALL BRANCHES	166.6125		CSQ	166.6125		CSQ	N	H	A	
12	INITIAL ATTACK	I/A A/G 1	TBD	166.6375		CSQ	166.6375		CSQ	N	H	A	
13	INITIAL ATTACK	IA TAC 1	I/A Grp	159.3750		CSQ	159.3750		Tone 6 156.7	N	H	A	
14	INITIAL ATTACK	IA TAC 2	TBD	169.2875		CSQ	169.2875		CSQ	N	H	A	
15	Air-to-Ground	VTAC14	MEDEVAC	159.4725		CSQ	159.4725		Tone 6 156.7	N	H	A	
16	EMERGENCY	AIRGUARD	EMERGENCY	168.6250		CSQ	168.6250		Tone 1 110.9	N	H	A	EMERGENCY ONLY

Prepared By (Communications Unit Leader) *A. Dy...* Incident Location: College AK State: AK Latitude: 64°53'28.78"N Longitude: 147°48'57.10"W

Forest / Unit / Jurisdiction: AKS-FNS

Kody Kerwin, COML (925) 953-3044

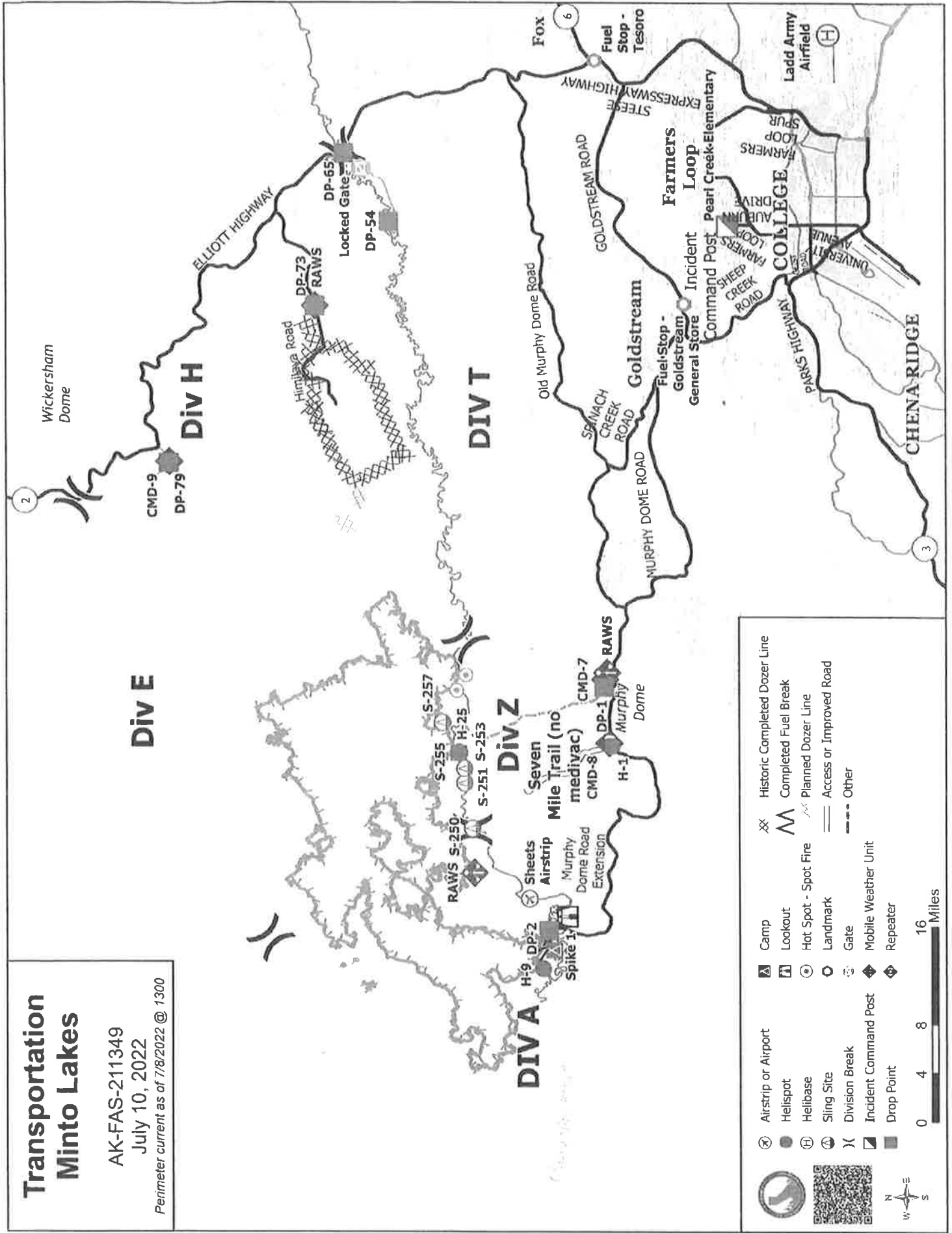
The convention calls for frequency lists to show four digits after the decimal place (five digits for 700 MHz frequencies). The letter "U", "N", or "W" in the deviation (Dev) column reflects whether the frequency is ultranarrow (6.25 kHz), narrow (12.5 kHz) or wide band (25 kHz). Mode refers to either "A" indicating Analog, "D" indicating Digital (e.g. Project 25) or "M" indicating Mixed Mode. All channels are shown as if programmed in a control station, mobile or portable radio. Repeaters (and depending on use, base stations) must be programmed with the Rx and Tx reversed. **Communications Unit Phone: 206-260-1132**

Transportation Minto Lakes

AK-FAS-2111349

July 10, 2022

Perimeter current as of 7/8/2022 @ 1300



	Airstrip or Airport		Historic Completed Dozer Line
	Helispot		Completed Fuel Break
	Helibase		Planned Dozer Line
	Sling Site		Access or Improved Road
	Division Break		Other
	Incident Command Post		
	Drop Point		
	Camp		
	Lookout		
	Hot Spot - Spot Fire		
	Landmark		
	Gate		
	Mobile Weather Unit		
	Repeater		

0 4 8 16 Miles

REQUEST ACCESS TO ARCGIS FIELD MAPS for interactive mobile maps and field data collection

STEP 1

Request a NIFC ArcGIS Account
if you do not already have one



NIFC Account Request Form
<https://bit.ly/3OLBG1W>

STEP 2

Request access to collect and/or view incident data



Field Maps Request Form
<https://arcg.is/10Svi51>

STEP 3

Download ArcGIS Field Maps app



- Search “ArcGIS Field Maps” in the app store on your mobile device
- Sign into your NIFC ArcGIS account through the app once installed

Please contact JRRoberts@tularecounty.ca.gov for support



Training Specialist Minto Lakes

The Training Specialist is working remotely. Training Specialist contact information for the Minto Lakes Fire is:

- Robert Rivelle
- Most important; If any Trainee or Trainer has any questions or concerns, call/text: 707.498.1761 “anytime”.
- Email: robert_rivelle@nps.gov

How to register as a Trainee:

1. Use the QR code below to register. If you’re unable to register using the QR code, please call 707.498.1761 anytime.
2. Once registered, you will receive text and email updates.

How to close-out your training assignment:

1. **Trainer:** Complete and Evaluation Record in the back of the Position Task Book and make as many entries as possible within the individual tasks. Discuss this with your Trainee.
2. **Trainer:** Complete an individual performance rating (ICS 225) and go over the performance rating with your Trainee.
3. **Trainee:** Text a photo or email your individual performance rating (ICS 225) to the Training Specialist.
4. **Trainee:** Complete the Trainee exit questions at the QR code below.
5. **Trainee:** Once 1-4 are completed, the Trainee and the Training Specialist will have a brief conversation to discuss the Task Book and assignment with the Trainee.
6. **Done**, except for safe travels home!

Trainee Registration



Trainee Exit Questions



MEDICAL PLAN (ICS 206 WF)

1. Incident/Project Name		2. Operational Period							
MINTO LAKES FIRE		Date/Time 07/12/22 0800 to 07/13/22 0800							
3. Ambulance Services									
Name	Location	Phone & EMS Frequency	Advanced Life Support (ALS)						
			Yes	No					
Fairbanks Fire Dept	1033 Aurora Drive Fairbanks, AK	911	X						
Chena Goldstream	716 Chena Ridge Road Fairbanks, AK	911	X						
Steese Area Volunteer Fire	800 William Leary Fairbanks, AK	911	X						
4. Air Ambulance Services									
Name	Phone	Type of Aircraft & Capability							
Alaska State Troopers	800-811-0911	Astar							
Ft Wainwright MWR	800-811-0911	Blackhawk, Hoist							
Eielson AFB	800-811-0911	Ahawk, Hoist							
5. Hospitals									
Name & Level	GPS Datum – WGS 84 Degrees Decimal Minutes		Travel Time Air Gnd		Phone	Helipad Yes No		Address	
	Lat:								
Fairbanks Memorial Level 4	Long:	N64°49.874 W147°44.304		1.5 hrs	(907)452-8181	X		650 Cowles St, Fairbanks, AK 99701	
Harborview-UW Burn Center	Lat:	N47°36.232 W122°19.445	3hrs		(206)744-3000	X		325 9 th Ave Seattle Washington 98104	
Providence Hospital Level 2 Trauma	Long:				(907)562-2211	X		3200 Providence Drive, Anchorage, AK 99508	
Concentra Urgent Care	Lat:				(907)452-2178		X	1867 Airport Way Suite 130B Fairbanks, AK 99701	
	Long:								
6. Division / Crew Pre-plan. Update and Discuss with Assigned Resources Daily									
Crew EMTs & Equipment									
Fireline EMTs & Location									
Adv. Life Support?									
Air Hoist site: Lat: / Long:									
Helispot: Lat: / Long:									
Alternate no-fly plan:									
7. Aid Stations									
Minto Medical Unit– ICP Pearl Creek Elementary 700 Auburn Dr, Fairbanks, AK		Point of Contact:		Matt Vierra (805) 712-1941 Mellissa Conway (530) 249-9421					
		Equipment Available on Site:		Medical supplies					
8. Prepared By (Medical Unit Leader)			9. Date/Time		10. Reviewed By (Safety Officer)			11. Date/Time	
Matt Vierra – MEDL 805 712-1941			07/11/22 1730		John Nickey-SOF1			07/11/22 1830	

MEDICAL PLAN (ICS 206 WF)

Medical Incident Report

FOR A **NON-EMERGENCY INCIDENT**: WORK THROUGH CHAIN OF COMMAND TO REPORT AND TRANSPORT INJURED PERSONNEL AS NECESSARY.

FOR A **MEDICAL EMERGENCY**: IDENTIFY ON SCENE INCIDENT COMMANDER BY NAME AND POSITION AND ANNOUNCE "MEDICAL EMERGENCY" TO INITIATE RESPONSE FROM COMMUNICATIONS

Use the following Items to communicate situation to communications/dispatch.

1. CONTACT COMMUNICATIONS / DISPATCH (Verify correct frequency prior to starting report)

Ex: "Communications, Div Alpha. Stand-by for Emergency Traffic."

2. INCIDENT STATUS: Provide incident summary (including number of patients) and command structure.

Ex: "Communications, I have a Red priority patient, unconscious, struck by a falling tree

Requesting air ambulance to Forest Road 1 at (Lat./Long)

"This will be the Trout Meadow Medical Incident, IC is TFLD Jones. EMT Smith is providing medical care "

Severity of Emergency AND Transport Priority (priority 1, 2, 3)	<input type="checkbox"/> RED / PRIORITY 1 Life or limb threatening injury or illness. Evacuation need is IMMEDIATE <i>Ex: Unconscious, difficulty breathing, bleeding severely, 2° – 3° burns more than 4 palm sizes, heat stroke, disoriented.</i> <input type="checkbox"/> YELLOW / PRIORITY 2 Serious Injury or illness. Evacuation may be DELAYED if necessary. <i>Ex: Significant trauma, unable to walk, 2° – 3° burns not more than 1-3 palm sizes.</i> <input type="checkbox"/> GREEN / PRIORITY 3 Minor Injury or illness. Non-Emergency transport <i>Ex: Sprains, strains, minor heat-related illness</i>
Nature of Injury or Illness & Mechanism of Injury	Brief Summary of Injury or Illness <i>(Ex: Unconscious, Struck by Falling Tree)</i>
Transport Request	Air Ambulance / Short Haul/Hoist Ground Ambulance / Other
Patient Location	Descriptive Location & Lat. / Long. (WGS84)
Incident Name	Geographic Name + "Medical" <i>(Ex: Trout Meadow Medical)</i>
On-Scene Incident Commander	Name of on-scene IC of Incident within an Incident <i>(Ex: TFLD Jones)</i>
Crew Patient Care	Name of Care Provider <i>(Ex: EMT Smith)</i>

3. INITIAL PATIENT ASSESSMENT: Complete this section for each patient as applicable (start with the most severe patient)

Agency Affiliation: (NO PATIENT NAMES) Federal Contractor Local Government

Patient Assessment: Age: Weight: Chief Complaint:

(If pertinent to Injury) Skin Signs: (color/moisture/temp) Level of Consciousness: BP: HR: Respirations:

Treatment:

4. TRANSPORT PLAN:

Evacuation Location (drop point, intersection, helispot, Lat. / Long, hazards) Patient's ETA to Location:

5. ADDITIONAL RESOURCES / EQUIPMENT NEEDS:

Paramedic / EMT - Crews - Immobilization Devices - AED - Oxygen - Trauma Bag - IV/Fluid(s) - Splints - Rope rescue - Wheeled litter - HAZMAT - Extrication

6. COMMUNICATIONS: Identify State Air/Ground EMS Frequencies and Hospital Contacts as applicable

Function	Channel Name/Number	Receive (RX)	Tone/NAC *	Transmit (TX)	Tone/NAC "
COMMAND					
AIR-TO-GRND					
TACTICAL					

7. CONTINGENCY: Considerations: If primary options fail, what actions can be implemented in conjunction with primary evacuation method?
Be thinking ahead.

8. ADDITIONAL INFORMATION: Updates/Changes, etc.

REMEMBER: Confirm ETAs of resources ordered. Act according to your level of training
Be Alert - Keep Calm - Think Clearly - Act Decisively

*** Follow up with MEDL upon return to ICP ***