










## ORGANIZATION ASSIGNMENT LIST (ICS 203)

<b>1. Incident Name:</b> MINTO LAKES FIRE		<b>2. Operational Period: Date From:</b> 7/14/2022 Time From: 0800		<b>Date To:</b> 7/15/2022 Time To: 0800	
<b>3. Incident Commander(s) and Command Staff:</b>			<b>7. Operation Section:</b>		
IC/UC's	JERRY MCGOWAN	Operations	CHRIS CHILDERS, KERRI WILLIAMSON (t)		
Deputy	KEN KEMPTER	Planning Operations	ROBERT LAENG, TRAVIS THANE (t)		
Safety Officer	JOHN NICKEY	Night Ops			
Information Officer	KRISTEN ALLISON	Staging Area			
Liaison Officer	CELESTE PRESCOTT, DARREL MILLER (t)	Division/Group	ALPHA	GARY MONDAY, ANTHONY ZAVALLA	
<b>4. Agency/Organization Representatives:</b>			Division/Group		
Agency/Organization	Name	Division/Group			
AK DIV OF FORESTRY	JEREMY DOUSE	Division/Group	ZULU	ROBERT BERNEY	
AK DIV OF FORESTRY	GORDON AMUNDSON	Division/Group			
BLM	TIM HAMMOND	Division/Group			
ANCSA	JUSTIN RAY	Division/Group	<del>TANGO</del>	<del>PAUL JOHNSON</del> <i>2 amov 2</i>	
BIA	LYNN POLACCA	Division/Group			
		Division/Group			
		Division/Group	HOTEL /T	LUIS DOZAL	
		Division/Group			
		Division/Group	ECHO	UNSTAFFED	
		Division/Group			
		Division/Group	SECURITY	CAM GONZALEZ	
		Division/Group			
		Division/Group			
<b>5. Planning Section:</b>			Division/Group		
Chief	DAN FUHRMAN	Division/Group			
Deputy		Division/Group			
Resource Unit		Division/Group			
Situation Unit	JONATHAN ROBERTS	Division/Group			
Documentation Unit	MICHELLE HALE	Division/Group			
Demobilization Unit	JUSTIN T SAIZ	Division/Group			
GISS	M HANS, J ROBERTS, D BEASLEY (t)	Division/Group			
FBAN	PATRICK DOYLE	Division/Group			
IMET	BRENT BOWER, JONATHAN CHRIEST (t)	Division/Group			
Training Tech Spec	ROBERT RIVELLE (virtual)	<b>Air Operations Branch</b>			
		Air Operations Branch Director		ROCCO TERRACCIANO, CATHERINE EURBIN (t)	
		Air Tactical Group Supervisor			
<b>6. Logistics Section</b>			Helibase Manager		
Chief	DAN TURNER, RICH DAVIS, JERRI WEBSTER				
Supply Unit	MANI BOUSLAUGH, ROBERT GRIFFITH (t)		<b>8. Finance/Administration Section:</b>		
Facilities Unit	NICK SABLAN, MALDO NAVARRO		Chief	RENEE WHITE	
Ground Support Unit	DAVID TRUSSELL, DOUG POPWELL		Time Unit	RENEE SMITH, TERESA RENIFF	
Communications Unit	KODY KERWIN, MATTHEW NILSEN		Procurement Unit	PAUL WOOD (virtual)	
Medical Unit	MATT VIERRA, MELLISSA CONWAY (t)		Comp/Claims Unit	JODI GOVER	
FDUL	SAM KATANICH, DOUG WINN		Cost Unit	LEE PIPER	
Ordering Unit	SARA FELIX				
<b>Prepared By: Name:</b>	DAN FUHRMAN	<b>Position/Title:</b>	PSC1	<b>Signature:</b>	
<b>ICS 203</b>		<b>Date/Time:</b>	7/13/2022 2300 hours		NIMS IAP





# Minto Lakes Fire Weather Forecast



Forecast Number: 16  
Divisions: All  
Shift Date: 07/13/2022 0800 - 07/14/2022 0800

Incident Meteorologist: Jonathan Chriest (T)  
/s/ Jonathan Chriest *Jonathan Chriest*  
Forecast Issued: 1900 July 13<sup>th</sup>, 2022

## WEATHER DISCUSSION:

Temperatures this morning are starting off chilly in valleys down near 40 degrees with some areas of fog. Expect the fog to lift by 1000. Skies this afternoon will be mostly clear above smoke and haze. The thickness of the smoke will be variable, and areas that see more sunshine will see relative humidities drop to around 35% in the afternoon. Areas that see more smoke in the afternoon will stay in the 40-50% range. High temperatures will only make it into the low to mid 60s, with a few upper 60s readings in the valley locations. Winds will be light and from the west in valleys and northwest over ridges.

**WEATHER FORECAST FOR THURSDAY:** Mostly clear skies above smoke and haze. Some areas may see sunshine through the haze at times.

<b>TEMPERATURES:</b>	<b>Ridge Top:</b>	Highs:	56-63
	<b>Slope/Valley:</b>	Highs:	64-68
<b>HUMIDITY:</b>	<b>Ridge Top:</b>	Min:	45-52 %
	<b>Slope/Valley:</b>	Min:	35-42 %

**20 FT WINDS:** **Ridge Top:** Northwest winds 4-8 mph with gusts up to 15 mph in the afternoon.  
**Slope/Valley:** West winds 3-7 mph with gusts to 10 mph in the afternoon.

**CHANCE OF WETTING RAIN:** 0 % - **LAL:** 1 - **FFMC:** 82-84  
**STABILITY/INVERSION:** Strong inversion with poor dispersion. Inversion will break by 1400 with mixing heights rising to 6000 feet AGL by the evening hours.

**WEATHER FORECAST THURSDAY NIGHT:** Partly cloudy with smoke and haze.

<b>TEMPERATURES:</b>	<b>Ridge Top:</b>	Lows:	47-50
	<b>Slope/Valley:</b>	Lows:	45-48
<b>HUMIDITY:</b>	<b>Ridge Top:</b>	Max:	72-81 %
	<b>Slope/Valley:</b>	Max:	73-83 %

**20 FT WINDS:** **Ridge Top:** South winds 5-10 mph.  
**Slope/Valley:** Variable winds under 5mph, then downslope 1-3 mph by 4am.

**CHANCE OF WETTING RAIN:** 0% - **LAL:** 1  
**STABILITY/INVERSION:** Weak inversion forming after midnight with fair dispersion.

## **Extended Forecast:**

Friday will feature similar temperatures and a few more clouds than Thursday, and minimum relative humidities in the 40-50% range. Winds will turn to be from the south and southeast, but remain light. Significant precipitation will arrive Friday evening. By late Saturday morning, expect around 0.25" of rain over the fire area. With that system, there is currently an 80% chance of at least 0.1", and a 30% chance of at least 0.5" of precipitation. More rain is expected Sunday night and into next week.



Drop Point  
54 RAWS



Drop Point 73  
RAWS



Murphy Dome  
RAWS




Chatanika  
RAWS





## FIRE BEHAVIOR FORECAST

<b>FORECAST NUMBER: 14</b>	<b>TYPE OF FIRE: Wildfire</b>
<b>FIRE NAME: Minto Lakes</b>	<b>OPERATIONAL PERIOD: 7/14-7/15/2022, 0800-0800</b>
<b>DATE ISSUED: 7/13/2022</b>	<b>TIME ISSUED: 1900</b>
<b>UNIT: AK-FAS</b>	<b>SIGNED:  Patrick Doyle - FBAN</b>

### INPUTS

If you have Fire Behavior or Wx Observations, please take a picture and text to me with location. Thx! Patrick Doyle, cell # 530-310-3552

**WEATHER SUMMARY: TREND** *see IMET Fire Weather Forecast*  
**Temps:** down 0-2 degrees; **RH:** down 0-6 percent; **LAL:** no change; **CWR:** down 70% (0% CWR today)

### OUTPUTS

#### FIRE BEHAVIOR

**GENERAL:**

More moisture early this morning will continue the trend we have been seeing the last couple days. Minimal fire activity overall. Except for a few isolated areas where heat is holding and there is occasional torching. Be "heads up" today for much higher winds than what we have experienced over the last 10 days in the morning and afternoon.

This will assist in drying out some of the early morning moisture from the fuels. Do not expect this to increase fire activity to much, except for those few pockets of hold-over heat and residual activity. Mainly you will see little fire activity and conditions not conducive for spotting or rapid rates of spread.

Fire Danger Indices (CFFDRS)	Today's (Projected)	Trend	Interpretation
Fine Fuel Moisture Code (FFMC):	<b>83</b> (moderate)	<b>up</b> <b>16</b>	<small>Note: projected indices are calculated prior day for 14:00pm AKDT</small> Below 74, little chance of ignition or surface fire spread with an open flame. <i>Active spread in light fuels at 80. Ignition potential high at 90</i> and extreme fire behavior expected at 92.
Build-up Index (BUI):	<b>51</b> (moderate)	<b>up</b> <b>1</b>	

Fuel Type (FBS)	5 mph wind (*head-fire)	10 mph wind*	20 mph wind (T-storm outflow)*
Black Spruce (C-2)	ROS: 5-10 ch/hr	ROS: 9-18 ch/hr	ROS: 29-51 ch/hr
Mixed Hardwood w/50% Spruce (M-2)	ROS: 3-6 ch/hr	ROS: 5-10 ch/hr	ROS: 16-28 ch/hr
Old Burn Scars (O-1b) 50% cured, 0 t/a	ROS: 1-2 ch/hr	ROS: 2-4 ch/hr	ROS: 7-13 ch/hr

Note: 80 chains (ch) in a mile (mi); a chain (ch) is 66 feet (ft).

Important thresholds:		
<b>Critical Fire Weather (Temp/Rh) - rapid spread &amp; crown fire</b>	greater than 80° F	less than 30% Rh
<b>CFFDRS Indices - Correlated Large Fire Growth</b>	greater than 88 FFMC	greater than 80 BUI

**SPECIFIC:**

**DIV-A (SW Corner of Fire):** Minimal fire activity throughout the division.

**Div-E (North Flank of fire):** Some residual heat is still evident in Washington and Aggie Ck drainages. Most active spread between Washington creek and Tatalina river in boggy meskag, near the Tatalina river.

**Div-Z (South flank):** Minimal fire activity throughout the division. Pockets of heat can still be problematic in the afternoon when the winds pick back up.

**AIR OPERATIONS:** Smoke (varies) and winds may limit air operations.

#### SAFETY

When fire burns through an area in timber fuels. Stumps and logs that are consumed can become ash pits. This can create variable surface from consuming surface fuels and duff, weaken shallow-rooted trees in a once relatively dense material, but they also leave ash in their place. Be aware potential ash pits that are hot or if wet from recent rain, they can be very slippery if wet or damp. Walking through these areas can be like an obstacle course. Walking around can be hazardous.



**Incident:**  
Minto Lakes Fire AF-FAS-211349

**Date:**  
7-14-2022 to 7-15-2022

**Operational Period:**  
0800-0800



## *SAFETY MESSAGE*



*Fire fighter safety comes first on every fire, every time*

### Major Hazards and Risks

**Stump Holes-** In Alaska, watch for shallow roots systems and tundra burning for several weeks deep under the surface. These conditions can create deep burning duff holes hard to see above the surface.

**Drift Mines-** Early century vertical mine shafts are reported throughout the fire area and are unmarked. Tailings, piling, or ponds can be a sign that there's a mine shaft in the area. If you find one, flag off the area and share the information with fire personal.

**Root System Burnout-** Heads up for fire weakened trees. Identify and flag hazard. Spruce trees have shallow root systems. Avoid working or putting personnel in spruce stands during strong wind conditions.

### Aviation Awareness:

- Ensure good communication with aircraft
- Approved Helispots known and ready
- No trash in Helispot landing areas
- Watch for rotor wash on tank or bucket drops
- Trained Longline Personnel for crew cargo
- Medical Emergency Hoist Operations Lat/Long
- Fix Wing Aerial Water Drops; stay clear and watch for rolling rocks, tree limbs and tops
- Paracargo Operations make known where the drop zone is and stay clear of drop zone area

### Spike Camp Safety & Hazard Concerns

- **Trips, Falls, and Twisted Ankles From Uneven Footing.**
- **Lifting And Hauling—Get Help; Lift With Legs, Not With Your Back**
- **ICP Traffic—Go Slow and Watch For Foot Traffic**
- **Food Storage- Keep food in food storage boxes to prevent wildlife encounters.**
- **Guy Ropes And Stakes—Flag/Mark With Flagging or Lighting.**
- **Personal Hygiene—Wash Hands After Toilet Use and/or Prior To Eating.**
- **No Smoking In or Near Supply, Fuel Storage Areas.**

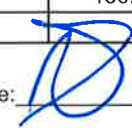
**Safety Officers:** John Nickey SOF1

A handwritten signature in blue ink, appearing to read "John Nickey".



# ASSIGNMENT LIST (ICS 204 WF)

CONTROLLED UNCLASSIFIED  
INFORMATION//BASIC

<b>1. Incident Name:</b> <b>MINTO LAKES FIRE</b>		<b>2. Operational Period:</b> Date From: 07/14/22    Date To: 07/15/22 Time From: 0800    Time To: 0800				<b>3. Branch</b> <b>A</b>		<b>Division</b> <b>Alpha</b>	
<b>4. Operations Personnel:</b>						<b>Page 1 of 1</b>			
Operations Section Chief: <b>CHRIS CHILDERS, KERRI WILLIAMSON (t)</b>				Night Ops:					
Branch Director:				Branch Safety:					
Division/Group Supervisor: <b>GARY MONDAY, ANTHONY ZAVALLA</b>				Air Attack:					
<b>5. Resources Assigned:</b>		<b>** Resources Below in Bold are 12 Hour **</b>							
Resource Identifier	ALS	LWD	Leader	Personnel	Request #	Hours	Reporting Location		
<b>CRW2IA NPF FSR 1 - ALPHA PH# 881651413616549</b>		7/17	<b>Aaron Murdock</b>	20	<b>C-3</b>	<b>0800-2100</b>	<b>DP 2</b>		
<b>WFM1 TETON - ALPHA PH# 881651423616</b>		7/16	<b>Eric Hawes</b>	11	<b>O-34</b>	<b>0800-2100</b>	<b>DP 2</b>		
<b>TBOT MASEK</b>		7/25	<b>Jim Masek</b>	1	<b>E-8</b>	<b>0800-2100</b>	<b>DP 2</b>		
<b>TBOT PEDERSON</b>		7/25	<b>JR Pederson</b>	1	<b>E-13</b>	<b>0800-2100</b>	<b>DP 2</b>		
<b>TBOT CHAMBLEE</b>		7/23	<b>Myron Chamblee</b>	1	<b>E-178</b>	<b>0800-2100</b>	<b>DP 2</b>		
<b>TBOT WIEBE</b>		7/23	<b>Greg Wiebe</b>	1	<b>E-179</b>	<b>0800-2100</b>	<b>DP 2</b>		
<b>WTS2 TWIN SPRINGS 1</b>		7/19	<b>Robin wood</b>	2	<b>E-150</b>	<b>0800-2100</b>	<b>DP 2</b>		
<b>WTS2 APLUSTILL</b>		7/25	<b>Tony Aplustill</b>	2	<b>E-176</b>	<b>0800-2100</b>	<b>DP 2</b>		
<b>TFLD RUSSELL</b>		7/16	<b>Russell, Kathleen</b>	1	<b>O-9</b>	<b>0800-2100</b>	<b>DP 2</b>		
<b>TFLD RAMEY (t)</b>		7/15	<b>Josh Ramey</b>	1	<b>O-37.44</b>	<b>0800-2100</b>	<b>DP 2</b>		
<b>EMTF CREEK</b>		7/23	<b>Isaac Creek</b>	1	<b>O-98</b>	<b>0800-2100</b>	<b>DP 2</b>		
<b>EMPF BASTIAN</b>		7/26	<b>Kristina Bastian</b>	1	<b>O-172</b>	<b>0800-2100</b>	<b>DP 2</b>		
<b>6. Work Assignments:</b>									
TASK: Monitor fire behavior and perform point protection around structures and allotments. Mop up to the extent necessary to minimize the likelihood of an escape and to secure value at risk.									
PURPOSE: Fire effects and suppression damage are minimized.									
END STATE: Damage to values at risk and suppression repair needs are avoided.									
<b>7. Special Instructions:</b>									
Pre-identify resources for initial attack inside and outside of TFR.									
All non-operational boat transportation on the Chatanika River needs to be scheduled at least one day in advance. Schedule boat transportation with Planning Ops. Fireline PPE is required, as well as escorts for non-redcarded personnel									
Backhaul trash and any unused surplus equipment.									
<b>8. Communications</b>									
Name	Ch	Function	Rx Freq	Rx Tone	Tx Freq	Tx Tone	Notes		
TACTICAL	TAC 1		168.0500	Tone 9 100.0	168.0500	Tone 9 100.0			
COMMAND	CMD 7		170.4250	Tone 9 100.0	168.0750	Tone 9 100.0	DP1		
AIR-to-GROUND	A/G 1		166.6125	CSQ	166.6125	CSQ			
AIR-to-GROUND	VTAC14	MEDEVAC	159.4725	CSQ	159.4725	Tone 6 156.7			
<b>9. Prepared by: Name:</b> JUSTIN T SAIZ                      RESL									
						Signature: 			
<b>ICS 204</b>		Date/Time: 7/13/2022 2200				Personnel Count: 43			



# ASSIGNMENT LIST (ICS 204 WF)

CONTROLLED UNCLASSIFIED  
INFORMATION/BASIC

<b>1. Incident Name:</b> <p style="text-align: center;"><b>MINTO LAKES FIRE</b></p>	<b>2. Operational Period:</b> Date From: 07/14/22    Date To: 07/15/22 Time From: 0800    Time To: 0800	<b>3. Branch</b> <b>Division</b> <p style="text-align: center;"><b>Z</b></p> <b>Page 1 of 1</b> <b>Zulu</b>
--	---	---

<b>4. Operations Personnel:</b> Operations Section Chief: <b>CHRIS CHILDERS, KERRI WILLIAMSON (t)</b> Branch Director: Division/Group Supervisor: <b>ROBERT BERNEY</b>	Night Ops: Branch Safety: Air Attack:
---	---

<b>5. Resources Assigned:</b>		<b>** Resources Below in Bold are 12 Hour **</b>					
Resource Identifier	ALS	LWD	Leader	Personnel	Request #	Hours	Reporting Location
CRW1 DALTON IHC		7/16	<b>Ron Gregor</b>	28	<b>C-16</b>	<b>0800-2100</b>	<b>ZULU SPIKE</b>
<b>**CR2IA LAKEVIEW</b>		7/25	<b>Cody Chartier</b>	20	<b>C-23</b>	<b>0800-2100</b>	<b>ICP</b>
TBOT WOLFE		7/26	<b>Dave Wolfe</b>	1	<b>E-6</b>	<b>0800-2100</b>	<b>ZULU SPIKE</b>
TBOT STRICKLAND		7/25	<b>Aaron Strickland</b>	1	<b>E-14</b>	<b>0800-2100</b>	<b>ZULU SPIKE</b>
TBOT MATHEW		7/21	<b>Alex Mathew</b>	1	<b>E-69</b>	<b>0800-2100</b>	<b>ZULU SPIKE</b>
TBOT MILLIGAN		7/21	<b>Joe Milligan</b>	1	<b>E-177</b>	<b>0800-2100</b>	<b>ZULU SPIKE</b>
TFLD TARANGO (t)		7/17	<b>Matthew Tarango</b>	1	<b>C-16.12</b>	<b>0800-2100</b>	<b>ZULU SPIKE</b>
<b>**TFLD LOVELLE</b>		7/17	<b>Casey Lovell</b>	1	<b>O-62</b>	<b>0800-2100</b>	<b>ZULU SPIKE</b>
TFLD WILTSE (t)		7/26	<b>Travis Wiltse</b>	1	<b>O-175</b>	<b>0800-2100</b>	<b>ZULU SPIKE</b>
HELITACK CREW			<b>Rand Snyder</b>	6		<b>0800-2100</b>	<b>MINTO HELIBASE</b>
AMBU DELTA MEDICAL 2		7/16	Abigail Hill, Everett Bostick	2	<b>E-123</b>	<b>0800-2100</b>	<b>DP 1</b>
EMTF DIAZ		7/22	<b>Jose Diaz</b>	1	<b>O-97</b>	<b>0800-2100</b>	<b>ZULU SPIKE</b>

**6. Work Assignments:**  
 TASK: Monitor fire behavior and perform point protection around structures and allotments. Mop up to the extent necessary to minimize the likelihood of an escape and to secure value at risk.  
 PURPOSE: Fire effects and suppression damage are minimized.  
 END STATE: Damage to values at risk and suppression repair needs are avoided.

**7. Special Instructions:**  
 \*\*Pre-identify resources for initial attack inside and outside of TFR.  
 All non-operational boat Transportation on the Chatanika River needs to be scheduled at least one day in advance. Schedule boat transportation with Planning Ops. Fireline PPE is required, as well as escorts for non-recarded personnel.  
 Backhaul trash and any unused surplus equipment.

<b>8. Communications</b>							
Name	Ch	Function	Rx Freq	Rx Tone	Tx Freq	Tx Tone	Notes
TACTICAL	TAC 2		168.2000	Tone 9 100.0	168.2000	Tone 9 100.0	
COMMAND	CMD 7		170.4250	Tone 9 100.0	168.0750	Tone 9 100.0	DP1
AIR-to-GROUND	A/G 1		166.6125	CSQ	166.6125	CSQ	
AIR-to-GROUND	VTAC14	MEDEVAC	159.4725	CSQ	159.4725	Tone 9 100.0	

<b>9. Prepared by: Name:</b>	JUSTIN T SAIZ	RESL	Signature:
<b>ICS 204</b>	Date/Time: 7/13/2022 2200	Personnel Count: 64	





# ASSIGNMENT LIST (ICS 204 WF)

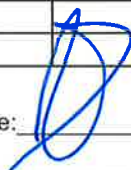
CONTROLLED UNCLASSIFIED  
INFORMATION//BASIC

<b>1. Incident Name:</b> <b>MINTO LAKES FIRE</b>		<b>2. Operational Period:</b> Date From: 07/14/22    Date To: 07/15/22 Time From: 0800    Time To: 0800			<b>3. Branch</b> <b>Division</b>  <b>H/T</b>  <b>Page 1 of 1</b> <b>Hotel/Tango</b>		
<b>4. Operations Personnel:</b> Operations Section Chief: <b>CHRIS CHILDERS, KERRI WILLIAMSON (t)</b> Branch Director: Division/Group Supervisor: <b>LUIS DOZAL</b>				Night Ops: Branch Safety: Air Attack:			
<b>5. Resources Assigned:</b>		<b>** Resources Below in Bold are 12 Hour **</b>					
Resource Identifier	ALS	LWD	Leader	Personnel	Request #	Hours	Reporting Location
<b>DIVS JOHNSON</b>		<b>7/16</b>	<b>Paul Johnson</b>	1	<b>O-60</b>	<b>0800-2100</b>	<b>DP73</b>
<b>TFLD RESER</b>		<b>7/16</b>	<b>Reser, Gregory John</b>	1	<b>O-63</b>	<b>0800-2100</b>	<b>DP73</b>
<b>**CR2IA METHOW</b>		<b>7/25</b>	<b>Chad Bresnahan</b>	20	<b>C-21</b>	<b>0800-2100</b>	<b>DP73</b>
<b>**CR2IA UMF VET</b>		<b>8/1</b>	<b>Samuel Bowen</b>	19	<b>C-22</b>	<b>0800-2100</b>	<b>DP73</b>
<b>EXC3 GILLMORE</b>		<b>7/26</b>	<b>Kenny Lewis</b>	1	<b>E-184</b>	<b>0800-2100</b>	<b>DP73</b>
<b>EXC2 HAWKS</b>		<b>7/26</b>	<b>Charlie Hawks</b>	2	<b>E-185</b>	<b>0800-2100</b>	<b>DP73</b>
<b>DOZ2 GILLMORE</b>		<b>7/19</b>	<b>Robert Gillmore</b>	2	<b>E-58</b>	<b>0800-2100</b>	<b>DP73</b>
<b>DOZ2 NORTHLAND WOOD</b>		<b>7/20</b>	<b>Herb Baxter</b>	1	<b>E-61</b>	<b>0800-2100</b>	<b>DP73</b>
<b>VAMP GILLMORE</b>		<b>7/17</b>	<b>Clark Munds</b>	1	<b>E-138</b>	<b>0800-2100</b>	<b>DP73</b>
<b>VAMP FAIRBANKS</b>		<b>7/17</b>	<b>Richard Tongsgard</b>	1	<b>E-139</b>	<b>0800-2100</b>	<b>DP73</b>
<b>TFLD DAVIS</b>		<b>7/14</b>	<b>Jake Davis</b>	1	<b>O-65</b>	<b>0800-2100</b>	<b>DP73</b>
<b>TFLD SWARTZLENDER (t)</b>		<b>7/25</b>	<b>Tyler Swartzlander</b>	1	<b>O-173</b>	<b>0800-2100</b>	<b>DP73</b>
<b>HEQB MCGRATH</b>		<b>7/15</b>	<b>Chris McGrath</b>	1	<b>O-41</b>	<b>0800-2100</b>	<b>DP73</b>
<b>HEQB CHARLTON</b>		<b>7/14</b>	<b>Mark Charlton</b>	1	<b>O-43</b>	<b>0800-2100</b>	<b>DP73</b>
<b>HEQB GLICK</b>		<b>7/20</b>	<b>Jonas Glick</b>	1	<b>O-44</b>	<b>0800-2100</b>	<b>DP73</b>
<b>AMBU DELTA MEDICAL 1</b>		<b>7/17</b>	<b>Dall Stables, Paul Siner</b>	2	<b>E-124</b>	<b>0800-2100</b>	<b>DP73</b>
<b>EMTP HUGHES</b>		<b>7/15</b>	<b>Tabitha Hughes</b>	1	<b>O-86</b>	<b>0800-2100</b>	<b>DP73</b>
<b>6. Work Assignments:</b> TASK: Initiate suppression repair where conditions allow. PURPOSE: Eliminate environmental resource impacts caused by suppression tactics minimize. END STATE: Return the area to as natural condition as possible.							
<b>7. Special Instructions:</b> ** Pre-identified resources for initial attack inside and outside of TFR. All non-operational boat transportation on the Chatanika River needs to be scheduled as least one day in advance. Schedule boat transportation with the Planning Ops. Fireline PPE is required, as well as escorts for non-redcarded personnel. Backhaul trash and any unused surplus equipment.							
<b>8. Communications</b>							
Name	Ch	Function	Rx Freq	Rx Tone	Tx Freq	Tx Tone	Notes
TACTICAL	<del>TAC 4</del>	<b>TAC 3</b>	166.7250	Tone 9 100.00	166.7250	Tone 9 100.0	
COMMAND	CMD 9		172.4625	Tone 9 100.00	169.8125	Tone 9 100.0	DP 79
AIR-to-GROUND	A/G 1		166.6125	CSQ	166.6125	CSQ	
AIR-to-GROUND	VTAC14	MEDEVAC	159.4725	CSQ	159.4725	Tone 6 156.7	
<b>9. Prepared by: Name:</b> JUSTIN T SAIZ				RESL			
				Signature:			
<b>ICS 204</b>		Date/Time: 7/13/2022 2200		Personnel Count: 57			



# ASSIGNMENT LIST (ICS 204 WF)

CONTROLLED UNCLASSIFIED  
INFORMATION//BASIC

<b>1. Incident Name:</b> <b>MINTO LAKES FIRE</b>		<b>2. Operational Period:</b> Date From: 07/14/22    Date To: 07/15/22 Time From: 0800    Time To: 0800			<b>3. Branch</b> <b>Division</b> <b>E</b> <b>Page 1 of 1</b> <b>Echo</b>		
<b>4. Operations Personnel:</b> Operations Section Chief: <b>CHRIS CHILDERS, KERRI WILLIAMSON (t)</b> Night Ops: Branch Director:    Branch Safety: Division/Group Supervisor: <b>UNSTAFFED</b> Air Attack:							
<b>5. Resources Assigned:</b>		<b>** Resources Below in Bold are 12 Hour **</b>					
<b>Resource Identifier</b>	<b>ALS</b>	<b>LWD</b>	<b>Leader</b>	<b>Personnel</b>	<b>Request #</b>	<b>Hours</b>	<b>Reporting Location</b>
<b>6. Work Assignments:</b> UNSTAFFED							
<b>7. Special Instructions:</b>							
<b>8. Communications</b>							
<b>Name</b>	<b>Ch</b>	<b>Function</b>	<b>Rx Freq</b>	<b>Rx Tone</b>	<b>Tx Freq</b>	<b>Tx Tone</b>	<b>Notes</b>
<b>9. Prepared by: Name:</b> JUSTIN T SAIZ    RESL					<b>Signature:</b> 		
<b>ICS 204</b>	Date/Time: 7/13/2022    2200			Personnel Count: 0			



# ASSIGNMENT LIST (ICS 204 WF)

CONTROLLED UNCLASSIFIED  
INFORMATION//BASIC

<b>1. Incident Name:</b> <b>MINTO LAKES FIRE</b>	<b>2. Operational Period:</b> Date From: 07/14/22     Date To: 07/15/22 Time From: 0800             Time To: 0800	<b>3. Branch</b> <b>Division</b> <b>SECURITY</b>  <b>Page 1 of 1</b>
---	---	---

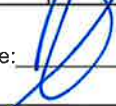
<b>4. Operations Personnel:</b>	
Operations Section Chief: <b>CHRIS CHILDERS, KERRI WILLIAMSON (t)</b> Branch Director: Division/Group Supervisor: <b>CAM GONZALEZ</b>	Night Ops: Branch Safety: Air Attack:

Resource Identifier	<b>** Resources Below in Bold are 12 Hour **</b>					Hours	Reporting Location
	ALS	LWD	Leader	Personnel	Request #		
<b>SEC1 MOORE</b>			<b>Brandon Moore</b>	1	<b>O-153</b>	<b>1300-0500</b>	<b>DP 73</b>
<b>SEC1 DANCE</b>		7/22	<b>Donnie Dance</b>	1	<b>O-152</b>	<b>1300-0500</b>	<b>DP 73</b>
<b>SEC1 SHEFFER</b>		7/23	<b>Kevin Sheffer</b>	1	<b>O-159</b>	<b>1300-0500</b>	<b>DP 54</b>
<b>SEC1 MAGEE</b>		7/23	<b>Devin Magee</b>	1	<b>O-158</b>	<b>1300-0500</b>	<b>ICP</b>
<b>SEC1 HARRIS</b>		7/23	<b>Tyler Harris</b>	1	<b>O-157</b>	<b>1300-0500</b>	<b>DP 1</b>
<b>SEC1 STENINGER</b>		7/23	<b>Steve Steninger</b>	1	<b>O-150</b>	<b>1300-0500</b>	<b>DP 2</b>
<b>SEC2 BENKOFKSKE</b>		7/15	<b>Nate Benkofske</b>	1	<b>O-73</b>	<b>0800-2400</b>	<b>ROVER</b>
<b>SEC2 LAWLER</b>		7/15	<b>Mitch Lawler</b>	1	<b>O-74</b>	<b>0800-2400</b>	<b>DP 73</b>
<b>SEC2 BERMEL</b>		7/15	<b>Anthony Bermel</b>	1	<b>O-72</b>	<b>0800-2400</b>	<b>DP 65</b>
<b>SEC2 ROZNOVAK</b>		7/18	<b>Debbie Roznovak</b>	1	<b>O-128</b>	<b>0500-2100</b>	<b>DP 54</b>
<b>SEC2 DAESCHLER</b>		7/21	<b>James Daeschler</b>	1	<b>O-155</b>	<b>0600-2200</b>	<b>ICP</b>
<b>SEC2 ROLSING</b>		7/22	<b>Douglas Rolsing</b>	1	<b>O-154</b>	<b>0400-2000</b>	<b>DP 1</b>
<b>SEC1 NELB</b>							

**6. Work Assignments:**  
Provide safe and secure area for Fire Personnel assigned to Minto Lakes Fire. Resolve any incident with public and incidents within the Fire operations. Facilitate traffic issues within ICP and Fire Operations. Identify and resolve infractions with security. Assist evacuations and closures with the local law enforcement. Assist any closure orders.

**7. Special Instructions:**  
Security can respond to calls for service in emergencies. Security will change channels on radio dependent of response. Security checks in and out with security manager and can rotate positions of patrol as fire and incident dictates.

<b>8. Communications</b>							
Name	Ch	Function	Rx Freq	Rx Tone	Tx Freq	Tx Tone	Notes
TACTICAL	TAC 3		168.6000	Tone 9 100.0	168.6000	Tone 9 100.0	
COMMAND		SEE 205					
AIR-to-GROUND	A/G 1		166.6125	CSQ	166.6125	NONE	
AIR-to-GROUND	VTAC14	MEDEVAC	159.4725	CSQ	159.4725	Tone 6 156.7	

<b>9. Prepared by: Name:</b> <b>JUSTIN T SAIZ</b>	<b>RESL</b>  Signature: 	<b>Date/Time:</b> 7/13/2022 2200	<b>Personnel Count:</b> 12
--	---	----------------------------------	----------------------------



<b>INCIDENT RADIO</b>		Incident Name		Date/Time Prepared		Operational Period Date/Time	
<b>COMMUNICATIONS PLAN (ICS 205)</b>		<b>MINTO LAKES v1</b>		<b>7/13/2022 1800</b>		<b>7/14/2022 0800 - 7/15/2022 0800</b>	

**CONTROLLED CLASSIFIED INFORMATION/BASIC**

**Utilization of any frequency other than those listed on this form are prohibited, subject to fines by the FCC and demobilization from the incident.**

Zn Ch	Function	Channel Name/Trunked Radio System Talkgroup	Assignment	RX Freq N or W	RX Tone/NAC	TX Freq N or W	TX Tone/NAC	Dev	Pwr	Mode A, D or M	Remarks
1	TACTICAL	TAC 1	DIV A	168.0500	Tone 9 100.0	168.0500	Tone 9 100.0	N	H	A	
2	TACTICAL	TAC 2	DIV Z	168.2000	Tone 9 100.0	168.2000	Tone 9 100.0	N	H	A	
3	TACTICAL	TAC 3	DIV H/T	168.6000	Tone 9 100.0	168.6000	Tone 9 100.0	N	H	A	
4	TACTICAL	TAC 4	TBD	166.7250	Tone 9 100.0	166.7250	Tone 9 100.0	N	H	A	
5	TACTICAL	TAC 5	TBD	166.7750	Tone 9 100.0	166.7750	Tone 9 100.0	N	H	A	
6											
7	COMMAND	CMD 7	ALL BRANCHES	170.4250	Tone 9 100.0	168.0750	Tone 9 100.0	N	H	A	DP1
8	COMMAND	CMD 8	ALL BRANCHES	170.4125	Tone 9 100.0	165.9625	Tone 9 100.0	N	H	A	H1
9	COMMAND	CMD 9	ALL BRANCHES	172.4625	Tone 9 100.0	169.8125	Tone 9 100.0	N	H	A	DP 79
10	LOCAL DISP	ESTER	ALL BRANCHES	151.2650	TONE: DPL 4CE	159.2700	TONE: DPL 4CE	N	H	D	
11	Air-to-Ground	A/G CMD	ALL BRANCHES	166.6125	CSQ	166.6125	CSQ	N	H	A	
12	INITIAL ATTACK	I/A A/G 1	TBD	166.6375	CSQ	166.6375	CSQ	N	H	A	
13	INITIAL ATTACK	IA TAC 1	I/A Grp	159.3750	CSQ	159.3750	Tone 6 156.7	N	H	A	
14	INITIAL ATTACK	IA TAC 2	TBD	169.2875	CSQ	169.2875	CSQ	N	H	A	
15	Air-to-Ground	VTAC14	MEDEVAC	159.4725	CSQ	159.4725	Tone 6 156.7	N	H	A	
16	EMERGENCY	AIRGUARD	EMERGENCY	168.6250	CSQ	168.6250	Tone 1 110.9	N	H	A	EMERGENCY ONLY

Prepared By (Communications Unit Leader) *Kody Kerwin*  
 Incident Location: College AK  
 Forest / Unit / Jurisdiction: AK-FAS-211349  
 State: AK  
 Latitude: 64°53'28.78"N Longitude: 147°48'57.10"W

**Kody Kerwin, COML (925) 953-3044**

The convention calls for frequency lists to show four digits after the decimal place (five digits for 700 MHz frequencies). The letter "U", "N", or "W" in the deviation (Dev) column reflects whether the frequency is ultranarrow (6.25 kHz), narrow (12.5 kHz) or wide band (25 kHz). Mode refers to either "A" indicating Analog, "D" indicating Digital (e.g. Project 25) or "M" indicating Mixed Mode. All channels are shown as if programmed in a control station, mobile or portable radio. Repeaters (and depending on use, base stations) must be programmed with the Rx and Tx reversed. **Communications Unit Phone: 206-260-1132**





<b>INCIDENT RADIO COMMUNICATIONS PLAN (ICS 205)</b>	Incident Name <b>SELECT I/A GROUP (FAIRBANKS FORESTRY NORTH GRP)</b>	Date/Time Prepared <b>7/13/2022 1800</b>	Operational Period Date/Time <b>7/14/2022 0800 - 7/15/2022 0800</b>
---	---	---	--

**CONTROLLED CLASSIFIED INFORMATION/BASIC**

**Utilization of any frequency other than those listed on this form are prohibited, subject to fines by the FCC and demobilization from the incident.**

Zn Ch	Function	Channel Name/Trunked Radio System Talkgroup	Assignment	RX Freq N or W	RX Tone/NAC	RX Freq N or W	TX Freq N or W	TX Tone/NAC	Dev	Pwr	Mode A, D or M	Remarks
1	I/A	ESTER DOME RPT	I/A Grp	151.2650	NAC: 4CE /1230	159.2700	NAC: 4CE /1230	N	H	D	DIGITAL CH	
2	I/A	NENANA RPT	I/A Grp	151.2950	NAC: 4F9 /1273	159.3000	NAC: 4F9 /1273	N	H	D	DIGITAL CH	
3	I/A	POKER FLATS	I/A Grp	151.2800	NAC: 455 /1109	159.3450	NAC: 455 /1109	N	H	D	DIGITAL CH	
4	I/A	CH DOME	I/A Grp	151.3100	Tone 8 103.5	159.4500	Tone 8 103.5	N	H	A		
5	I/A	TORS	I/A Grp	155.5350	Tone 13 141.3	151.4750	Tone 13 141.3	N	H	A		
6	I/A	PORT RPTR	I/A Grp	159.2550	Tone 4 136.5	154.7550	Tone 4 136.5	N	H	A		
7	I/A	VTAC 11	I/A Grp	151.1375	CSQ	151.1375	Tone6 156.7	N	H	A		
8	I/A	VTAC 13	I/A Grp	158.7375	CSQ	158.7375	Tone6 156.7	N	H	A		
9	I/A	VTAC 14	I/A Grp	159.4725	CSQ	159.4725	Tone6 156.7	N	H	A		
10	I/A A/G	I/A A/G 2	I/A Grp	168.3250	CSQ	168.3250	CSQ	N	H	A		
11	I/A	I/A TAC 2	I/A Grp	169.2875	CSQ	169.2875	CSQ	N	H	A		
12	I/A A/G	I/A A/G 1	I/A Grp	166.6375	CSQ	166.6375	CSQ	N	H	A		
13	I/A	IA TAC 1	I/A Grp	159.3750	CSQ	159.3750	Tone 6 156.7	N	H	A		
14	I/A	SHAW CREEK	I/A Grp	151.3250	Tone 13 141.3	159.3300	Tone 3 131.8	N	H	A		
15												
16	<b>EMERGENCY</b>	<b>AIRGUARD</b>	<b>EMERGENCY</b>	168.6250	CSQ	168.6250	Tone 1 110.9	N	H	A	<b>EMERGENCY ONLY</b>	

Prepared By (Communications Unit Leader) *Kody Kerwin*

Incident Location: College AK

State: AK

Latitude: Longitude:

Forest / Unit / Jurisdiction: AK-FAS

**Kody Kerwin, COML (925) 953-3044**

The convention calls for frequency lists to show four digits after the decimal place (five digits for 700 MHz frequencies). The letter "U", "N", or "W" in the deviation (Dev) column reflects whether the frequency is ultranarrow (6.25 kHz), narrow (12.5 kHz) or wide band (25 kHz). Mode refers to either "A" indicating Analog, "D" indicating Digital (e.g. Project 25) or "M" indicating Mixed Mode. All channels are shown as if programmed in a control station, mobile or portable radio. Repeaters (and depending on use, base stations) must be programmed with the Rx and Tx reversed. **AFS DISPATCH Phone: 907-451-2623**



<b>AIR OPERATIONS SUMMARY 220</b>	Prepared By: Catherine Eurbin	Prepared Time: 1900
<b>1. INCIDENT NAME: MINTO LAKES</b>	<b>2. OPERATIONAL PERIOD</b> 07/14/2020	<b>START TIME:</b> 0900
		<b>END TIME:</b> 2200
		<b>SUNRISE:</b> 03:49
		<b>SUNSET:</b> 00:04

**3. REMARKS** (Safety Notes, Hazards, Air Operations Special Equipment, etc.):

**4. READY ALERT AIRCRAFT:**

**Medevac**  
State Patrol

*Order through 911*  
See Medical Plan in the IAP

**5. TFR**  
2/9414(A-26)  
0900-2400 until 7/29/22

6. PERSONNEL	NAME	PHONE #	7. FREQUENCIES	AM	FM	8. FIXED-WING Avail/ Type/ Make-Model/ N#/ Base
AOBD	Rocco Terracciano(O-37)	951-333-7458	A/A (Fixed)			<i>AIRTANKERS: AS NEEDED</i>
AOBD (t)	Catherine Eurbin (O-37)	661-917-3687	A/A (Rotor)	126.350 (A-26)		ATGS Platforms: Air Attack (A-22) – 7MZ Jay Carl -Assigned.
ATGS			A/G Primary		166.6125 RX/TX	TFR FREQ. 126.350
HEBM	Dan Quinones (O-145)	541-771-0052	A/G Secondary			
HEBM (AFS)	Ryan Reed	435-210-0043				
						Helibase LADD Ketchum Rd, North Pole, AK 99705 N 64.84057 X W147.58582
						Helibase AFS 3700 Airport Way. Fairbanks, AK. 99709 N 64.8395963 X W 147.8176663
			National Flight Following		168.6500 RX/TX (T1 110.9)	
			Air Guard		168.6250 (T1 110.9 RX/TX)	











# ***Training Specialist Minto Lakes***

**The Training Specialist is working remotely. Training Specialist contact information for the Minto Lakes Fire is:**

- Robert Rivelle
- Most important; If any Trainee or Trainer has any questions or concerns, call/text: 707.498.1761 “anytime”.
- Email: robert\_rivelle@nps.gov

**How to register as a Trainee:**

1. Use the QR code below to register. If you’re unable to register using the QR code, please call 707.498.1761 anytime.
2. Once registered, you will receive text and email updates.

**How to close-out your training assignment:**

1. **Trainer:** Complete and Evaluation Record in the back of the Position Task Book and make as many entries as possible within the individual tasks. Discuss this with your Trainee.
2. **Trainer:** Complete an individual performance rating (ICS 225) and go over the performance rating with your Trainee.
3. **Trainee:** Text a photo or email your individual performance rating (ICS 225) to the Training Specialist.
4. **Trainee:** Complete the Trainee exit questions at the QR code below.
5. **Trainee:** Once 1-4 are completed, the Trainee and the Training Specialist will have a brief conversation to discuss the Task Book and assignment with the Trainee.
6. **Done**, except for safe travels home!

**Trainee Registration**



**Trainee Exit Questions**







# REQUEST ACCESS TO ARCGIS FIELD MAPS for interactive mobile maps and field data collection

## STEP 1

Request a NIFC ArcGIS Account  
if you do not already have one



NIFC Account Request Form  
<https://bit.ly/3OLBG1W>

## STEP 2

Request access to collect and/or view incident data



Field Maps Request Form  
<https://arcg.is/10Svi51>

## STEP 3

Download ArcGIS Field Maps app



- Search “ArcGIS Field Maps” in the app store on your mobile device
- Sign into your NIFC ArcGIS account through the app once installed

Please contact [JRRoberts@tularecounty.ca.gov](mailto:JRRoberts@tularecounty.ca.gov) for support

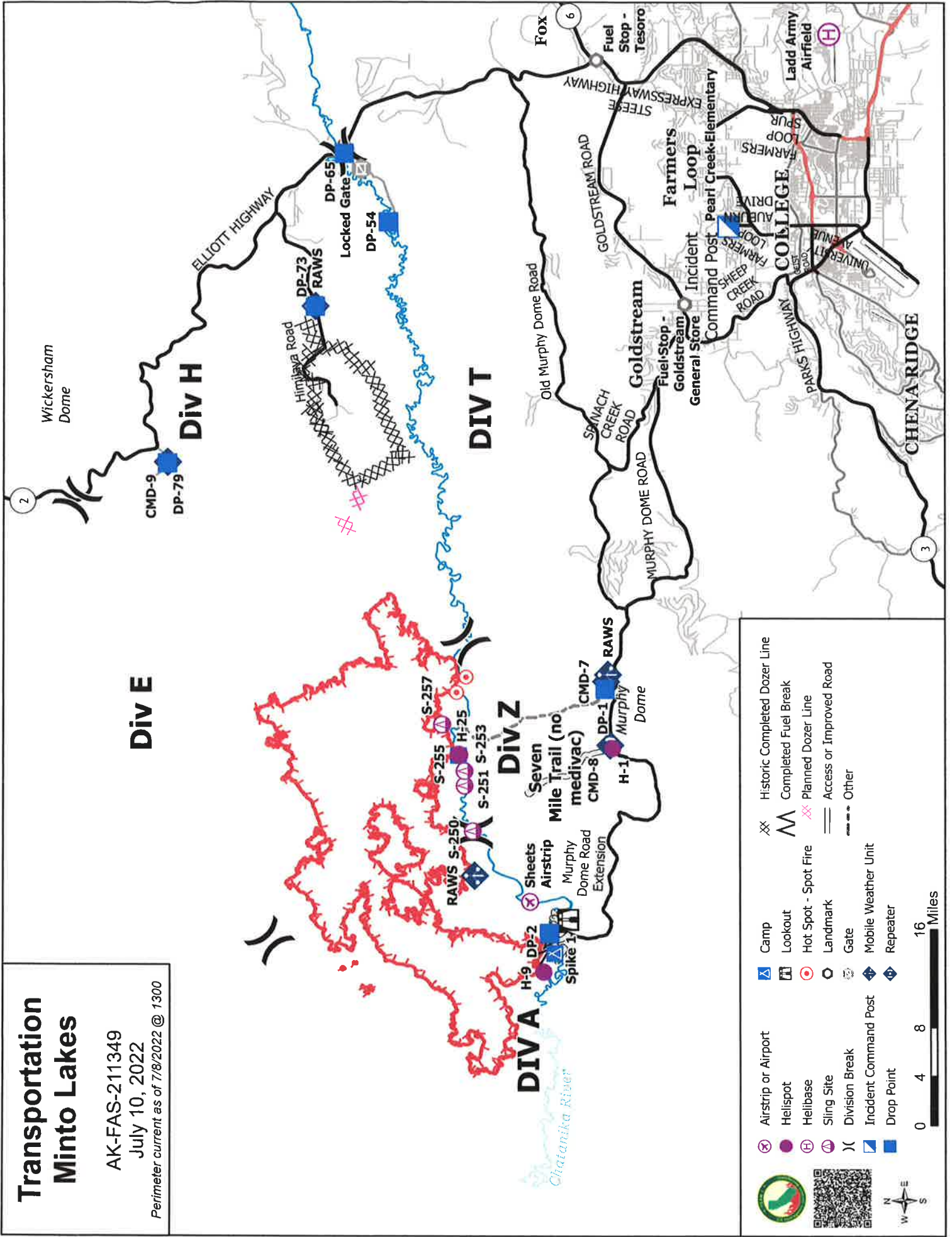


# Transportation Minto Lakes

AK-FAS-211349

July 10, 2022

Perimeter current as of 7/8/2022 @ 1300







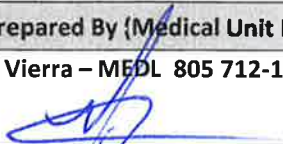
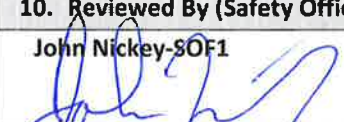








# MEDICAL PLAN (ICS 206 WF)

<b>1. Incident/Project Name</b>				<b>2. Operational Period</b>					
MINTO LAKES FIRE				Date/Time 07/14/22 0800 to 07/15/22 0800					
<b>3. Ambulance Services</b>									
Name	Location			Phone & EMS Frequency		Advanced Life Support (ALS) Yes      No			
Fairbanks Fire Dept	1033 Aurora Drive Fairbanks, AK			911		X			
Chena Goldstream	716 Chena Ridge Road Fairbanks, AK			911		X			
Steese Area Volunteer Fire	800 William Leary Fairbanks, AK			911		X			
<b>4. Air Ambulance Services</b>									
Name	Phone			Type of Aircraft & Capability					
Alaska State Troopers	800-811-0911			Astar					
Ft Wainwright MWR	800-811-0911			Blackhawk, Hoist					
Eielson AFB	800-811-0911			Ahawk, Hoist					
<b>5. Hospitals</b>									
Name & Level	GPS Datum – WGS 84 Degrees Decimal Minutes		Travel Time Air      Gnd		Phone	Helipad Yes      No		Address	
Fairbanks Memorial Level 4	Lat:	N64°49.874	3hrs	1.5 hrs	(907)452-8181	X		650 Cowles St, Fairbanks, AK 99701	
	Long:	W147°44.304							
Harborview-UW Burn Center	Lat:	N47°36.232	3hrs		(206)744-3000	X		325 9 <sup>th</sup> Ave Seattle Washington 98104	
	Long:	W122°19.445							
Providence Hospital Level 2 Trauma	Lat:				(907)562-2211	X		3200 Providence Drive, Anchorage, AK 99508	
Concentra Urgent Care	Lat:				(907)452-2178		X	1867 Airport Way Suite 130B Fairbanks, AK 99701	
	Long:								
<b>6. Division / Crew Pre-plan. Update and Discuss with Assigned Resources Daily</b>									
Crew EMTs & Equipment									
Fireline EMTs & Location Adv. Life Support?									
Air Hoist site: Lat: / Long:									
Helispot: Lat: / Long:									
Alternate no-fly plan:									
<b>7. Aid Stations</b>									
Minto Medical Unit– ICP Pearl Creek Elementary 700 Auburn Dr, Fairbanks, AK	Point of Contact:			Matt Vierra (805) 712-1941 Mellissa Conway (530) 249-9421					
	Equipment Available on Site:			Medical supplies					
<b>8. Prepared By (Medical Unit Leader)</b>			<b>9. Date/Time</b>		<b>10. Reviewed By (Safety Officer)</b>			<b>11. Date/Time</b>	
Matt Vierra – MEDL 805 712-1941 			07/13/22 1630		John Nickey-SOF1 			07/13/22 1700	



# MEDICAL PLAN (ICS 206 WF)

## Medical Incident Report

FOR A **NON-EMERGENCY INCIDENT**: WORK THROUGH CHAIN OF COMMAND TO REPORT AND TRANSPORT INJURED PERSONNEL AS NECESSARY.

FOR A **MEDICAL EMERGENCY**: IDENTIFY ON SCENE INCIDENT COMMANDER BY NAME AND POSITION AND ANNOUNCE "MEDICAL EMERGENCY" TO INITIATE RESPONSE FROM COMMUNICATIONS

**Use the following items to communicate situation to communications/dispatch.**

**1. CONTACT COMMUNICATIONS / DISPATCH** (Verify correct frequency prior to starting report)

*Ex: "Communications, Div. Alpha, Stand-by for Emergency Traffic."*

**2. INCIDENT STATUS:** Provide incident summary (including number of patients) and command structure.

*Ex: "Communications, I have a Red priority patient, unconscious, struck by a falling tree,*

*Requesting air ambulance to Forest Road 1 at (Lat./Long.)*

*"This will be the Trout Meadow Medical Incident, IC is TFLD Jones. EMT Smith is providing medical care."*

Severity of Emergency AND Transport Priority (priority 1, 2, 3)	<input type="checkbox"/> <b>RED / PRIORITY 1 Life or limb threatening injury or illness. Evacuation need is IMMEDIATE</b> <i>Ex: Unconscious, difficulty breathing, bleeding severely, 2° – 3° burns more than 4 palm sizes, heat stroke, disoriented.</i>  <input type="checkbox"/> <b>YELLOW / PRIORITY 2 Serious Injury or illness. Evacuation may be DELAYED if necessary.</b> <i>Ex: Significant trauma, unable to walk, 2° – 3° burns not more than 1-3 palm sizes.</i>  <input type="checkbox"/> <b>GREEN / PRIORITY 3 Minor Injury or illness. Non-Emergency transport</b> <i>Ex: Sprains, strains, minor heat-related illness.</i>	
Nature of Injury or Illness & Mechanism of Injury		Brief Summary of Injury or Illness <i>(Ex: Unconscious, Struck by Falling Tree)</i>
Transport Request		<i>Air Ambulance / Short Haul/Hoist Ground Ambulance / Other</i>
Patient Location		<i>Descriptive Location &amp; Lat. / Long. (WGS84)</i>
Incident Name		<i>Geographic Name + "Medical" (Ex: Trout Meadow Medical)</i>
On-Scene Incident Commander		<i>Name of on-scene IC of Incident within an Incident (Ex: TFLD Jones)</i>
Crew Patient Care		<i>Name of Care Provider (Ex: EMT Smith)</i>

**3. INITIAL PATIENT ASSESSMENT:** Complete this section for each patient as applicable (start with the most severe patient)

Agency Affiliation: (NO PATIENT NAMES)	Federal	Contractor	Local Government
--	---------	------------	------------------

Patient Assessment:	Age:	Weight:	Chief Complaint:
---------------------	------	---------	------------------

(If pertinent to Injury)	Skin Signs: (color/moisture/temp)	Level of Consciousness:	BP:	HR:	Respirations:
--------------------------	-----------------------------------	-------------------------	-----	-----	---------------

Treatment:

**4. TRANSPORT PLAN:**

Evacuation Location ( <i>drop point, intersection, helispot, Lat. / Long, hazards</i> )	Patient's ETA to Location:
---	----------------------------

**5. ADDITIONAL RESOURCES / EQUIPMENT NEEDS:**

*Paramedic / EMT - Crews - Immobilization Devices - AED - Oxygen - Trauma Bag - IV/Fluid(s) - Splints - Rope rescue - Wheeled litter - HAZMAT - Extrication*

**6. COMMUNICATIONS: Identify State Air/Ground EMS Frequencies and Hospital Contacts as applicable**

Function	Channel Name/Number	Receive (RX)	Tone/NAC *	Transmit (TX)	Tone/NAC *
COMMAND					
AIR-TO-GRND					
TACTICAL					

**7. CONTINGENCY: Considerations:** If primary options fail, what actions can be implemented in conjunction with primary evacuation method? *Be thinking ahead.*

**8. ADDITIONAL INFORMATION:** *Updates/Changes, etc.*

**REMEMBER:** Confirm ETAs of resources ordered. Act according to your level of training  
Be Alert - Keep Calm - Think Clearly - Act Decisively

\*\*\* Follow up with MEDL upon return to ICP \*\*\*

