
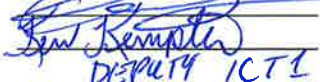



INCIDENT OBJECTIVES (ICS 202)

1. Incident Name: <p style="text-align: center;">MINTO LAKES FIRE</p>	2. Operational Period:	Date From: 7/15/2022 Time From: 0800	Date To: 7/16/2022 Time To: 0800
3. Objective(s): <u>LEADERS INTENT:</u> Utilize the best combination of point protection, direct and indirect tactics with mindful consideration of the values at risk and the probability of success of fire management actions in order to meet incident objectives.			
<u>Management Objectives</u> -SAFETY: Provide for firefighter and public safety as the highest priority through sound risk management and Life First Principles. The safety of fire personnel, the public and the employees is the highest priority during all phases of the incident. -PROPERTY: Protect qualifying sites and natural resources from damage by wildfire. Provide point protection for values immediately or potentially affected by fire. Document effects of native allotments from the fire and suppression activities. -NATURAL RESOURCES: Initiate suppression repair in compliance with Minto Lakes Fire Suppression Repair Standards. -RELATIONSHIPS: Maintain and develop relationships and partnerships and stakeholders, cooperators, community leaders/members, private landowners, and local agencies by coordinating incident management efforts through timely and accurate information sharing. -COST: Ensure expenditures are commensurate with the values at risk. Keep Agency Administrators apprised of current situation and cost estimates.			
<u>Operational Objectives</u> -Confine the fire NORTH and EAST of the Chatanika River while providing point protection for all values at risk. Manage fire growth utilizing natural barriers and previous fire control lines. Support the Fairbanks Area by assuming IA responsibilities within the TFR, as well as providing resources for initial attack in the Fairbanks Area. Level of response to new starts will be based on location within AK Fire Management Option Area.			
5. Site Safety Plan Required? Yes <input type="checkbox"/> No			
Approved Site Safety Plan(s) Located at:			
6. Incident Action Plan			
<input checked="" type="checkbox"/> ICS 203 <input checked="" type="checkbox"/> ICS 204 <input checked="" type="checkbox"/> ICS 205 <input checked="" type="checkbox"/> ICS 206 <input checked="" type="checkbox"/> ICS 208	<input type="checkbox"/> ICS 215A <input checked="" type="checkbox"/> ICS 220 <input checked="" type="checkbox"/> Incident Map <input checked="" type="checkbox"/> Weather Forecast <input checked="" type="checkbox"/> Fire Behavior	<input type="checkbox"/> Phone List <input checked="" type="checkbox"/> Training Message <input checked="" type="checkbox"/> Travel Map <input type="checkbox"/> Demob Plan <input type="checkbox"/> Finance Message	<input type="checkbox"/> Fire Suppression Repair Plan <input type="checkbox"/> <input type="checkbox"/> <input type="checkbox"/> <input checked="" type="checkbox"/> ICS 214
7. Prepared By: DAN FUHRMAN	Position/Title: PSC1	Signature: 	
8. Approved by Incident Commander:	JERRY MCGOWAN	Signature: 	
ICS 202			

ORGANIZATION ASSIGNMENT LIST (ICS 203)

1. Incident Name: MINTO LAKES FIRE		2. Operational Period: Date From: 7/15/2022 Time From: 0800		Date To: 7/16/2022 Time To: 0800	
3. Incident Commander(s) and Command Staff:			7. Operation Section:		
IC/UC's	JERRY MCGOWAN	Operations	CHRIS CHILDERS, KERRI WILLIAMSON (t)		
Deputy	KEN KEMPTER	Planning Operations	ROBERT LAENG, TRAVIS THANE (t)		
Safety Officer	JOHN NICKEY	Night Ops			
Information Officer	KRISTEN ALLISON	Staging Area			
Liaison Officer	CELESTE PRESCOTT, DARREL MILLER (t)	Division/Group	ALPHA	GARY MONDAY, ANTHONY ZAVALLA	
4. Agency/Organization Representatives:			Division/Group		
Agency/Organization	Name	Division/Group			
AK DIV OF FORESTRY	JEREMY DOUSE	Division/Group	ZULU	ROBERT BERNEY	
AK DIV OF FORESTRY	GORDON AMUNDSON	Division/Group			
BLM	TIM HAMMOND	Division/Group			
ANCSA	JUSTIN RAY	Division/Group	HOTEL/TANGO	LUIS DOZAL	
BIA	LYNN POLACCA	Division/Group			
		Division/Group			
		Division/Group	ECHO	UNSTAFFED	
		Division/Group			
		Division/Group			
		Division/Group	SECURITY	CAM GONZALEZ	
		Division/Group			
		Division/Group			
		Division/Group			
		Division/Group			
5. Planning Section:			Division/Group		
Chief	DAN FUHRMAN	Division/Group			
Deputy		Division/Group			
Resource Unit	JUSTIN T SAIZ	Division/Group			
Situation Unit	JONATHAN ROBERTS	Division/Group			
Documentation Unit	MICHELLE HALE	Division/Group			
Demobilization Unit		Division/Group			
GISS	M HANS, J ROBERTS, D BEASLEY (t)	Division/Group			
FBAN	PATRICK DOYLE	Division/Group			
IMET	BRENT BOWER, JONATHAN CHRIEST (t)	Division/Group			
Training Tech Spec	ROBERT RIVELLE (virtual)	Air Operations Branch			
		Air Operations Branch Director		ROCCO TERRACCIANO, CATHERINE EURBIN (t)	
		Air Tactical Group Supervisor			
6. Logistics Section			Helibase Manager		
Chief	DAN TURNER, RICH DAVIS, JERRI WEBSTER				
Supply Unit	MANI BOUSLAUGH, ROBERT GRIFFITH (t)		8. Finance/Administration Section:		
Facilities Unit	NICK SABLAN, MALDO NAVARRO		Chief	RENE WHITE	
Ground Support Unit	DAVID TRUSSELL, DOUG POPWELL		Time Unit	RENEE SMITH, TERESA RENIFF	
Communications Unit	KODY KERWIN, MATTHEW NILSEN		Procurement Unit	PAUL WOOD (virtual)	
Medical Unit	MATT VIERRA, MELLISSA CONWAY (t)		Comp/Claims Unit	JODI GOVER	
FDUL	SAM KATANICH, DOUG WINN		Cost Unit	LEE PIPER	
Ordering Unit	SARA FELIX				
Prepared By: Name:	DAN FUHRMAN	Position/Title:	PSC1	Signature:	
ICS 203		Date/Time:	7/14/2022 2300 hours	NIMS IAP	



Minto Lakes Fire Weather Forecast



Forecast Number: 17
Divisions: All
Shift Date: 07/14/2022 0800 - 07/15/2022 0800

Incident Meteorologist: Joseph Bower
/s/ Joseph Bower Joseph Bower
Forecast Issued: 1900 July 14th, 2022

WEATHER DISCUSSION:

Another cold front will approach the area today with skies starting off partly cloudy and increasing clouds during the day with smoke and haze. This will limit the minimum relative humidity to around 45% and high temperatures around the mid 60s, Winds will be light, strengthening from the southeast during the evening, and peaking overnight with gusts from the south 15 to 20 mph. Rain will begin in the evening and last into Saturday afternoon.

WEATHER FORECAST FOR FRIDAY: Partly cloudy skies with some smoke and haze. Increasing clouds during the day.

TEMPERATURES: **Ridge Top:** Highs: 58-64
 Slope/Valley: Highs: 66-71

HUMIDITY: **Ridge Top:** Min: 42-52 %
 Slope/Valley: Min: 34-43 %

20 FT WINDS: **Ridge Top:** Southeast winds 3-7 mph with gusts up to 12 mph in the evening.
 Slope/Valley: Upslope/upvalley 2-6 mph with gusts to 10 mph in the afternoon.

CHANCE OF WETTING RAIN: 10% - **LAL:** 1 - **FFMC:** 85-88

STABILITY/INVERSION: Moderate inversion with fair dispersion. Inversion will break by 1000 with mixing heights rising to 7000 feet AGL by the evening hours.

WEATHER FORECAST FRIDAY NIGHT: Cloudy with rain. 0.1 to 0.25 inches overnight.

TEMPERATURES: **Ridge Top:** Lows: 48-52
 Slope/Valley: Lows: 46-50

HUMIDITY: **Ridge Top:** Max: 80-95 %
 Slope/Valley: Max: 85-95 %

20 FT WINDS: **Ridge Top:** South winds 5-10 mph, gusts to 15 mph.
 Slope/Valley: Southeast 3 to 7 mph with gusts to 10 mph.

CHANCE OF WETTING RAIN: 50% - **LAL:** 1

STABILITY/INVERSION: No inversion.

Extended Forecast:

Saturday will feature cooler temperatures, clouds and showers. Minimum relative humidities will be in the 55-65% range. Winds will become southwest 5 to 10 mph with gusts 15 to 20 mph. By late Saturday morning, expect around 0.25" of rain over the fire area. With that system, there is currently a 90% chance of at least 0.1", and a 30% chance of at least 0.5" of precipitation. More rain is expected Sunday night and into next week.



Drop Point
54 RAWS



Drop Point 73
RAWS




Murphy Dome
RAWS



Chatanika
RAWS

FIRE BEHAVIOR FORECAST

FORECAST NUMBER: 15	TYPE OF FIRE: Wildfire
FIRE NAME: Minto Lakes	OPERATIONAL PERIOD: 7/15-7/16/2022, 0800-0800
DATE ISSUED: 7/14/2022	TIME ISSUED: 1900
UNIT: AK-FAS	SIGNED:  Patrick Doyle - FBAN

INPUTS

If you have Fire Behavior or Wx Observations, please take a picture and text to me with location. Thx! Patrick Doyle, cell # 530-310-3552

WEATHER SUMMARY: TREND *see IMET Fire Weather Forecast*
Temps: up 1-3 degrees; **RH:** down 0-3 percent; **LAL:** no change; **CWR:** no change until late evening, then up 50%

OUTPUTS

FIRE BEHAVIOR

GENERAL:

- Minimal fire activity overall. Except for a few isolated areas where heat is holding and there may be occasional flair ups or torching. Be "heads up" today for much higher winds this evening when the frontal system moves through. Areas that are affected can be more active where hold-over heat may align with fuels receptive for isolated torching. Though unlikely, there may be a few areas on the line where this increase in potential may cause areas smoldering to creeping, backing and flanking at the greatest potential activity.
- Increasing cloudy cover and more moisture expected late this afternoon/evening into early tomorrow morning will continue the trend we have been seeing the last couple days. Reducing fire activity dramatically as we go into the following day.

Fire Danger Indices (CFFDRS)	Today's (Projected)	Trend	Interpretation
Fine Fuel Moisture Code (FFMC):	86 (high)	up 3	Below 74, little chance of ignition or surface fire spread with an open flame. <i>Active spread in light fuels at 80. Ignition potential high at 90 and extreme fire behavior expected at 92.</i>
Build-up Index (BUI):	65 (high)	up 14	Fuel availability and flammability. Seasonal severity. Used in Fire Behavior Predictions.

Fuel Type (FBS)	5 mph wind (*head-fire)	10 mph wind*	20 mph wind (T-storm outflow)*
Black Spruce (C-2)	ROS: 10-20 ch/hr	ROS: 18-34 ch/hr	ROS: 53-92 ch/hr
Mixed Hardwood w/50% Spruce (M-2)	ROS: 5-11 ch/hr	ROS: 10-18 ch/hr	ROS: 29-49 ch/hr
Old Burn Scars (O-1b) 50% cured, 0 t/a	ROS: 2-4 ch/hr	ROS: 4-7 ch/hr	ROS: 13-22 ch/hr

Note: 80 chains (ch) in a mile (mi); a chain (ch) is 66 feet (ft).

Important thresholds:		
Critical Fire Weather (Temp/Rh) - rapid spread & crown fire	greater than 80° F	less than 30% Rh
CFFDRS Indices - Correlated Large Fire Growth	greater than 88 FFMC	greater than 80 BUI

SPECIFIC:

DIV-A (SW Corner of Fire): Minimal fire activity throughout the division.

Div-E (North Flank of fire): Some residual heat is still evident in Washington and Aggie Ck drainages. Most active spread between Washington creek and Tatalina river in boggy meskag, near the Tatalina river.

Div-Z (South flank): Minimal fire activity throughout the division, with pockets of heat near Div-Z/T break. Pockets of heat can still be problematic if near the line or values.

AIR OPERATIONS: Clear skies today with mild winds will be good for air operations.

SAFETY

As fire activity in your divisions decline, remember to keep your situational awareness in tune. Snags and fire weakened trees continue to be one of the biggest hazards out there. Continue surveying work areas overhead hazards and mitigate them by having them removed or use flagging to keep people well clear of area.

Incident: Minto Lakes Fire AF-FAS-211349	Date: 7-15-2022 to 7-16-2022	Operational Period: 0800-0800
--	--	---



SAFETY MESSAGE



Fire fighter safety comes first on every fire, every time

Major Hazards and Risks

Working with Aircraft – Don't base your plan on the availability of aircraft for success. Do not let an overwhelming sense of urgency pressure you (or the pilot) into working in unsafe conditions. Clear all areas of personnel prior sling loads. Use qualified personnel for sling loads.

UTV – Always use Defensive Driving techniques. Drive at posted or slower speed limits as conditions warrant. Be prepared for sudden vehicle traffic; expect the unexpected. Try to stay to the right on public dirt roads as residents tend to drive in the middle of the road.

Wildlife – Watch for bears that are roaming through Spike Camp looking for food. Keep your trash picked up and hauled away daily. Watch for Moose and there young. Don't get between mom and calf. Watch for wildlife on the highway at any time of day.

With the extra Daylight are you getting good sleep

Signs of Fatigue to Watch for

The following may present in firefighters suffering from fatigue.

- Vacant Stare
- Glazed Eyes
- Pale Skin
- Body swaying upon standing.
- Walking into objects.
- Loss of concentration during briefings
- Slurred Speech

- Suppression Repair**
- Use caution when working around heavy equipment.
 - Make sure to make eye contact with operators when working with and moving around heavy equipment.
 - Do not work directly below heavy equipment.
 - Be mindful of your distance and of your crew's around equipment
 - Use caution around snags and fire weakened trees that may be dislodged during heavy equipment operations.

Safety Officers: John Nickey SOF1

INCIDENT RADIO		Incident Name		Date/Time Prepared		Operational Period Date/Time	
COMMUNICATIONS PLAN (ICS 205)		MINTO LAKES v1		7/14/2022 1800		7/15/2022 0800 - 7/16/2022 0800	
CONTROLLED CLASSIFIED INFORMATION/BASIC							

Utilization of any frequency other than those listed on this form are prohibited, subject to fines by the FCC and demobilization from the incident.

Zn Ch	Function	Channel Name/Trunked Radio System Talkgroup	Assignment	RX Freq N or W	RX Tone/NAC	TX Freq N or W	TX Tone/NAC	Dev	Pwr	Mode A, D or M	Remarks
1	TACTICAL	TAC 1	DIV A	168.0500	Tone 9 100.0	168.0500	Tone 9 100.0	N	H	A	
2	TACTICAL	TAC 2	DIV Z	168.2000	Tone 9 100.0	168.2000	Tone 9 100.0	N	H	A	
3	TACTICAL	TAC 3	DIV H/T	168.6000	Tone 9 100.0	168.6000	Tone 9 100.0	N	H	A	
4	TACTICAL	TAC 4	TBD	166.7250	Tone 9 100.0	166.7250	Tone 9 100.0	N	H	A	
5	TACTICAL	TAC 5	TBD	166.7750	Tone 9 100.0	166.7750	Tone 9 100.0	N	H	A	
6											
7	COMMAND	CMD 7	ALL BRANCHES	170.4250	Tone 9 100.0	168.0750	Tone 9 100.0	N	H	A	DP1
8	COMMAND	CMD 8	ALL BRANCHES	170.4125	Tone 9 100.0	165.9625	Tone 9 100.0	N	H	A	H1
9	COMMAND	CMD 9	ALL BRANCHES	172.4625	Tone 9 100.0	169.8125	Tone 9 100.0	N	H	A	DP 79
10	LOCAL DISP	ESTER	ALL BRANCHES	151.2650	TOPE : DPL 4CE	159.2700	TOPE : DPL 4CE	N	H	D	
11	Air-to-Ground	A/G CMD	ALL BRANCHES	166.6125	CSQ	166.6125	CSQ	N	H	A	
12	INITIAL ATTACK	I/A A/G 1	TBD	166.6375	CSQ	166.6375	CSQ	N	H	A	
13	INITIAL ATTACK	IA TAC 1	I/A Grp	159.3750	CSQ	159.3750	Tone 6 156.7	N	H	A	
14	INITIAL ATTACK	IA TAC 2	TBD	169.2875	CSQ	169.2875	CSQ	N	H	A	
15	Air-to-Ground	VTAC14	MEDEVAC	159.4725	CSQ	159.4725	Tone 6 156.7	N	H	A	
16	EMERGENCY	AIRGUARD	EMERGENCY	168.6250	CSQ	168.6250	Tone 1 110.9	N	H	A	EMERGENCY ONLY

Prepared By (Communications Unit Leader) *Kody Kerwin*

Incident Location: College AK

State: AK

Latitude: 64°53'28.78"N Longitude: 147°48'57.10"W

Kody Kerwin, COML (925) 953-3044

The convention calls for frequency lists to show four digits after the decimal place (five digits for 700 MHz frequencies). The letter "U", "N", or "W" in the deviation (Dev) column reflects whether the frequency is ultranarrow (6.25 kHz), narrow (12.5 kHz) or wide band (25 kHz). Mode refers to either "A" indicating Analog, "D" indicating Digital (e.g. Project 25) or "M" indicating Mixed Mode. All channels are shown as if programmed in a control station, mobile or portable radio. Repeaters (and depending on use, base stations) must be programmed with the Rx and Tx reversed. **Communications Unit Phone: 206-260-1132**

INCIDENT RADIO COMMUNICATIONS PLAN (ICS 205)	Incident Name SELECT I/A GROUP (FAIRBANKS FORESTY NORTH GRP)	Date/Time Prepared 7/14/2022 1800	Operational Period Date/Time 7/15/2022 0800 - 7/16/2022 0800
CONTROLLED CLASSIFIED INFORMATION/BASIC			

Utilization of any frequency other than those listed on this form are prohibited, subject to fines by the FCC and demobilization from the incident.

Zn Ch	Function	Channel Name/Trunked Radio System Talkgroup	Assignment	RX Freq	N or W	RX Tone/NAC	TX Freq	N or W	TX Tone/NAC	Dev	Pwr	Mode	Remarks
1	I/A	ESTER DOME RPT	I/A Grp	151.2650		NAC: 4CE /1230	159.2700		NAC: 4CE /1230	N	H	D	DIGITAL CH
2	I/A	NENANA RPT	I/A Grp	151.2950		NAC: 4F9 /1273	159.3000		NAC: 4F9 /1273	N	H	D	DIGITAL CH
3	I/A	POKER FLATS	I/A Grp	151.2800		NAC: 455 /1109	159.3450		NAC: 455 /1109	N	H	D	DIGITAL CH
4	I/A	CH DOME	I/A Grp	151.3100		Tone 8 103.5	159.4500		Tone 8 103.5	N	H	A	
5	I/A	TORS	I/A Grp	155.5350		Tone 13 141.3	151.4750		Tone 13 141.3	N	H	A	
6	I/A	PORT RPTR	I/A Grp	159.2550		Tone 4 136.5	154.7550		Tone 4 136.5	N	H	A	
7	I/A	VTAC 11	I/A Grp	151.1375		CSQ	151.1375		Tone6 156.7	N	H	A	
8	I/A	VTAC 13	I/A Grp	158.7375		CSQ	158.7375		Tone6 156.7	N	H	A	
9	I/A	VTAC 14	I/A Grp	159.4725		CSQ	159.4725		Tone6 156.7	N	H	A	
10	I/A A/G	I/A A/G 2	I/A Grp	168.3250		CSQ	168.3250		CSQ	N	H	A	
11	I/A	I/A TAC 2	I/A Grp	169.2875		CSQ	169.2875		CSQ	N	H	A	
12	I/A A/G	I/A A/G 1	I/A Grp	166.6375		CSQ	166.6375		CSQ	N	H	A	
13	I/A	IA TAC 1	I/A Grp	159.3750		CSQ	159.3750		Tone 6 156.7	N	H	A	
14	I/A	SHAW CREEK	I/A Grp	151.3250		Tone 13 141.3	159.3300		Tone 3 131.8	N	H	A	
15													
16	EMERGENCY	AIRGUARD	EMERGENCY	168.6250		CSQ	168.6250		Tone 1 110.9	N	H	A	EMERGENCY ONLY

Prepared By (Communications Unit Leader) *Kody Kerwin*

Kody Kerwin, COML (925) 953-3044

Incident Location: College AK State: AK Latitude: Longitude: Forest / Unit / Jurisdiction: AK-FAS

The convention calls for frequency lists to show four digits after the decimal place (five digits for 700 MHz frequencies). The letter "U", "N", or "W" in the deviation (Dev) column reflects whether the frequency is ultranarrow (6.25 kHz), narrow (12.5 kHz), or wide band (25 kHz). Mode refers to either "A" indicating Analog, "D" indicating Digital (e.g. Project 25) or "M" indicating Mixed Mode. All channels are shown as if programmed in a control station, mobile or portable radio. Repeaters (and depending on use, base stations) must be programmed with the Rx and Tx reversed. **AFS DISPATCH Phone: 907-451-2623**

ICS 205 KWK 7/14/2022

AIR OPERATIONS SUMMARY 220	Prepared By: Catherine Eurbin	Prepared: 07/14/2022	Prepared Time: 1900
1. INCIDENT NAME: MINTO LAKES	2. OPERATIONAL PERIOD 07/15/2020	START TIME: 0900	SUNRISE: 03:51
		END TIME: 2200	SUNSET: 00:02

3. REMARKS (Safety Notes, Hazards, Air Operations Special Equipment, etc.). <p style="text-align: center;">5 P's</p> <p style="text-align: center;"><i>Proper Preparation Prevents Poor Performance.</i></p>	4. READY ALERT AIRCRAFT: <p style="text-align: center;">Medevac State Patrol</p> <p style="text-align: center;"><i>Order through 911</i> See Medical Plan in the IAP</p>
	5. TFR <p style="text-align: center;">2/9414(A-26) 0900-2400 until 7/29/22</p>

6. PERSONNEL	NAME	PHONE #	7. FREQUENCIES	AM	FM	8. FIXED-WING Avail/ Type/ Make-Model/ N#/ Base
AOBD	Rocco Terracciano(O-37)	951-333-7458	A/A (Fixed)			AIRTANKERS: AS NEEDED
AOBD (t)	Catherine Eurbin (O-37)	661-917-3687	A/A (Rotor)	126.350 (A-26)		ATGS Platforms: Air Attack (A-22) – 7MZ Jay Carl -Assigned.
ATGS			A/G Primary		166.6125 RX/TX	TFR FREQ. 126.350
HEBM	Dan Quinones (O-145)	541-771-0052	A/G Secondary			
						Helibase LADD Ketchum Rd, North Pole, AK 99705 N 64.84057 X W147.58582
						Helibase AFS 3700 Airport Way. Fairbanks, AK. 99709 N 64.8395963 X W 147.8176663
			National Flight Following		168.6500 RX/TX (T1 110.9)	
			Air Guard		168.6250 (T1 110.9 RX/TX)	





9. HELICOPTERS (Use Additional Sheets as Necessary)

FAA #	T Y	MAKE/ MODEL	BASE	START	AVAIL	REMARKS	FAA #	TY	MAKE/ MODEL	BASE	START	AVAIL	REMARKS
17HX(A-2)	2	Bell 205 A1++	LADD	1000	2200	Bucket/Longline							
205BD (A-14)	2	Bell 205A1++	LADD	1000	2200	Bucket/Longline/ Rappel							
618ME (A-19)	3	ASTAR	LADD	1000	2200	Bucket							

10. TASK/ MISSION/ ASSIGNMENT (Type/ function includes: Air Tactical, Retardant, Recon, Personnel Transport, Bucket Operations, SAR, etc.)					
TYPE/FUNCTION	PRIORITY	NAME OF PERSONNEL OR CARGO (if applicable) or instructions for tactical aircraft	MISSION START	FLY FROM	FLY TO
Initial Attack		Request Air Attack through Air Operations	0900	LADD	Fire
Medevac		Support Initial Attack actions as requested.	TBD	LADD	IA
Water Drops / Sling Loads / Backhaul		**See Medical Plan in IAP – Review during Division Breakouts**	TBD		Fire
Recon		Div go direct to Helibase	0900	LADD	Fire
		Fire reconnaissance by Ops.	TBD	Helibase	Fire

Wind Restrictions

Flights above ground level	Flight Permitted in Winds Less than / Maximum Gust Spread		
	Type 1 Helicopters <50kts / Gusts: N/A	Type 2 Helicopters <50kts / Gusts: N/A	Type 3 Helicopters <50kts / Gusts: N/A
More than 500' AGL	<40kts / Max Gust Spread: 15kts	<40 kts / Max Gust Spread: 15kts	<30kts / Max Gust Spread: 15kts
Less than 500' AGL			

Helicopter #	Type	Manager Name	Phone Number	Helicopter #	Type	Manager Name	Phone Number
8ME	3	Eric Holzern	505 418 6738				
17HX	2	Russel Griffith	541-740-7637				
205BD	2	Jeremy Schwandt	208-948-3924				



Training Specialist Minto Lakes

The Training Specialist is working remotely. Training Specialist contact information for the Minto Lakes Fire is:

- Robert Rivelle
- Most important; If any Trainee or Trainer has any questions or concerns, call/text: 707.498.1761 **“anytime”**.
- Email: robert_rivelle@nps.gov

How to register as a Trainee:

1. Use the QR code below to register. If you're unable to register using the QR code, please call 707.498.1761 anytime.
2. Once registered, you will receive text and email updates.

How to close-out your training assignment:

1. **Trainer:** Complete and Evaluation Record in the back of the Position Task Book and make as many entries as possible within the individual tasks. Discuss this with your Trainee.
2. **Trainer:** Complete an individual performance rating (ICS 225) and go over the performance rating with your Trainee.
3. **Trainee:** Text a photo or email your individual performance rating (ICS 225) to the Training Specialist.
4. **Trainee:** Complete the Trainee exit questions at the QR code below.
5. **Trainee:** Once 1-4 are completed, the Trainee and the Training Specialist will have a brief conversation to discuss the Task Book and assignment with the Trainee.
6. **Done**, except for safe travels home!

Trainee Registration



Trainee Exit Questions



REQUEST ACCESS TO ARCGIS FIELD MAPS for interactive mobile maps and field data collection

STEP 1

Request a NIFC ArcGIS Account
if you do not already have one



NIFC Account Request Form
<https://bit.ly/3OLBG1W>

STEP 2

Request access to collect and/or view incident data



Field Maps Request Form
<https://arcg.is/10Svi51>

STEP 3

Download ArcGIS Field Maps app



- Search “ArcGIS Field Maps” in the app store on your mobile device
- Sign into your NIFC ArcGIS account through the app once installed

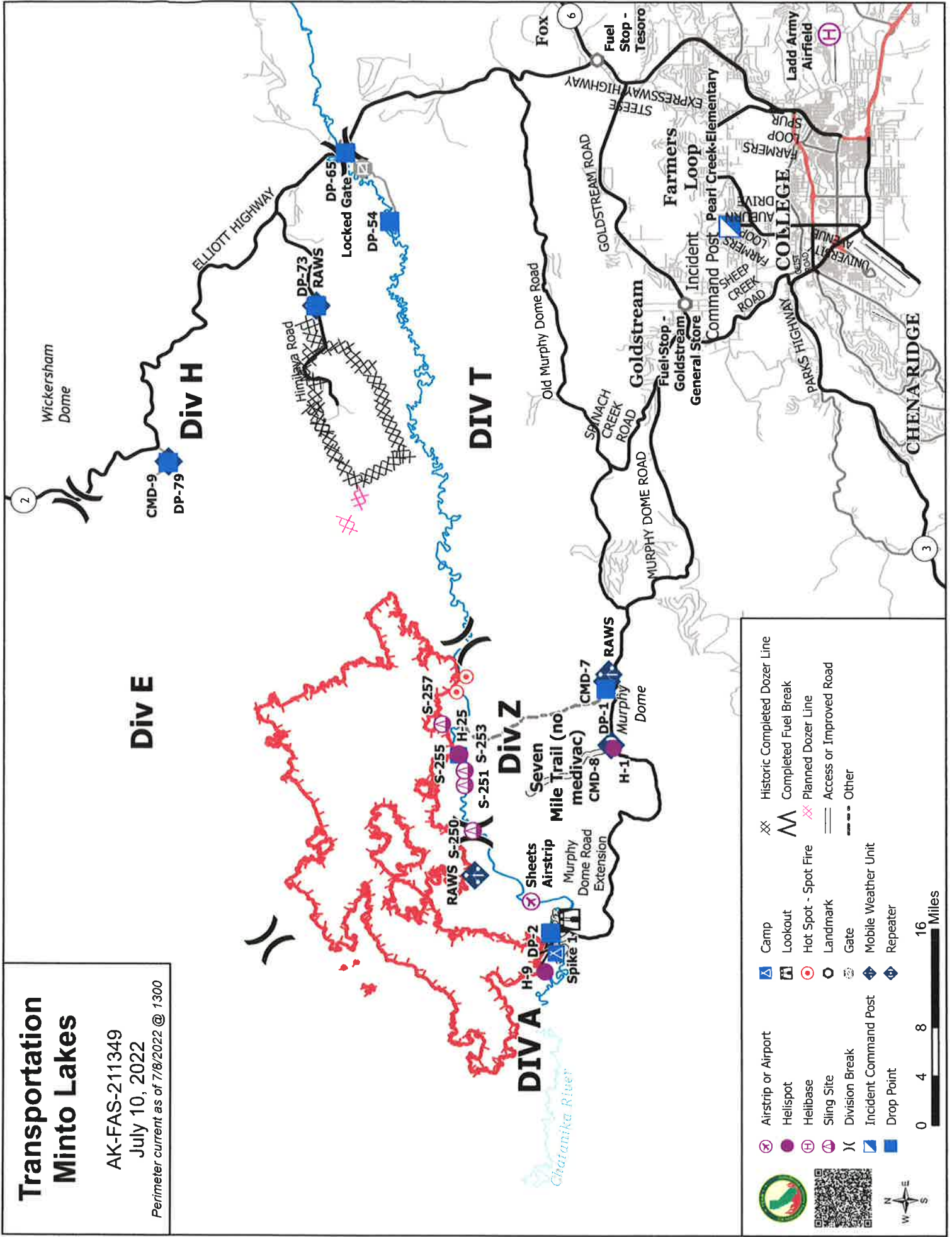
Please contact JRRoberts@tularecounty.ca.gov for support

Transportation Minto Lakes

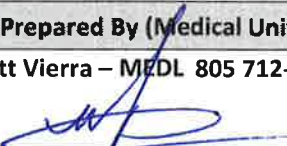
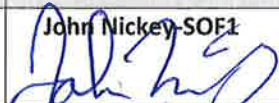
AK-FAS-211349

July 10, 2022

Perimeter current as of 7/8/2022 @ 1300



MEDICAL PLAN (ICS 206 WF)

1. Incident/Project Name				2. Operational Period				
MINTO LAKES FIRE				Date/Time 07/15/22 0800 to 07/16/22 0800				
3. Ambulance Services								
Name	Location			Phone & EMS Frequency		Advanced Life Support (ALS) Yes No		
Fairbanks Fire Dept	1033 Aurora Drive Fairbanks, AK			911		X		
Chena Goldstream	716 Chena Ridge Road Fairbanks, AK			911		X		
Steese Area Volunteer Fire	800 William Leary Fairbanks, AK			911		X		
4. Air Ambulance Services								
Name	Phone			Type of Aircraft & Capability				
Alaska State Troopers	800-811-0911			Astar				
Ft Wainwright MWR	800-811-0911			Blackhawk, Hoist				
Eielson AFB	800-811-0911			Ahawk, Hoist				
5. Hospitals								
Name & Level	GPS Datum – WGS 84 Degrees Decimal Minutes		Travel Time Air Gnd		Phone	Helipad Yes No		Address
Fairbanks Memorial Level 4	Lat:	N64°49.874	1.5 hrs	(907)452-8181	X		650 Cowles St, Fairbanks, AK 99701	
	Long:	W147°44.304						
Harborview-UW Burn Center	Lat:	N47°36.232	3hrs	(206)744-3000	X		325 9 th Ave Seattle Washington 98104	
	Long:	W122°19.445						
Providence Hospital Level 2 Trauma	Lat:			(907)562-2211	X		3200 Providence Drive, Anchorage, AK 99508	
Concentra Urgent Care	Lat:			(907)452-2178		X	1867 Airport Way Suite 130B Fairbanks, AK 99701	
	Long:							
6. Division / Crew Pre-plan. Update and Discuss with Assigned Resources Daily								
Crew EMTs & Equipment								
Fireline EMTs & Location Adv. Life Support?								
Air Hoist site: Lat: / Long:								
Helispot: Lat: / Long:								
Alternate no-fly plan:								
7. Aid Stations								
Minto Medical Unit– ICP Pearl Creek Elementary 700 Auburn Dr, Fairbanks, AK	Point of Contact:			Matt Vierra (805) 712-1941 Mellissa Conway (530) 249-9421				
	Equipment Available on Site:			Medical supplies				
8. Prepared By (Medical Unit Leader)	9. Date/Time		10. Reviewed By (Safety Officer)			11. Date/Time		
Matt Vierra – MEDL 805 712-1941 	07/14/22 1615		John Nickey-SOE1 			07/14/22 1615		

MEDICAL PLAN (ICS 206 WF)

Medical Incident Report

FOR A **NON-EMERGENCY INCIDENT**: WORK THROUGH CHAIN OF COMMAND TO REPORT AND TRANSPORT INJURED PERSONNEL AS NECESSARY.

FOR A **MEDICAL EMERGENCY**: IDENTIFY ON SCENE INCIDENT COMMANDER BY NAME AND POSITION AND ANNOUNCE "MEDICAL EMERGENCY" TO INITIATE RESPONSE FROM COMMUNICATIONS

Use the following items to communicate situation to communications/dispatch.

1. CONTACT COMMUNICATIONS / DISPATCH (Verify correct frequency prior to starting report)

Ex: "Communications, Div. Alpha. Stand-by for Emergency Traffic."

2. INCIDENT STATUS: Provide incident summary (including number of patients) and command structure.

Ex: "Communications, I have a Red priority patient, unconscious, struck by a falling tree.

Requesting air ambulance to Forest Road 1 at (Lat./Long.)

"This will be the Trout Meadow Medical Incident, IC is TFLDJones. EMT Smith is providing medical care."

Severity of Emergency AND Transport Priority (priority 1, 2, 3)	<input type="checkbox"/> RED / PRIORITY 1 Life or limb threatening injury or illness. Evacuation need is IMMEDIATE <i>Ex: Unconscious, difficulty breathing, bleeding severely, 2° – 3° burns more than 4 palm sizes, heat stroke, disoriented.</i>	
	<input type="checkbox"/> YELLOW / PRIORITY 2 Serious Injury or illness. Evacuation may be DELAYED if necessary. <i>Ex: Significant trauma, unable to walk, 2° – 3° burns not more than 1-3 palm sizes.</i>	
	<input type="checkbox"/> GREEN / PRIORITY 3 Minor Injury or illness. Non-Emergency transport <i>Ex: Sprains, strains, minor heat-related illness.</i>	
Nature of Injury or Illness & Mechanism of Injury		<i>Brief Summary of Injury or Illness (Ex: Unconscious, Struck by Falling Tree)</i>
Transport Request		<i>Air Ambulance / Short Haul/Hoist Ground Ambulance / Other</i>
Patient Location		<i>Descriptive Location & Lat. / Long. (WGS84)</i>
Incident Name		<i>Geographic Name + "Medical" (Ex: Trout Meadow Medical)</i>
On-Scene Incident Commander		<i>Name of on-scene IC of Incident within an Incident (Ex: TFLD Jones)</i>
Crew Patient Care		<i>Name of Care Provider (Ex: EMT Smith)</i>

3. INITIAL PATIENT ASSESSMENT: Complete this section for each patient as applicable (start with the most severe patient)

Agency Affiliation: (NO PATIENT NAMES) Federal Contractor Local Government

Patient Assessment: Age: Weight: Chief Complaint:

(If pertinent to Injury) Skin Signs: (color/moisture/temp) Level of Consciousness: BP: HR: Respirations:

Treatment:

4. TRANSPORT PLAN:

Evacuation Location (drop point, intersection, helispot, Lat. / Long, hazards) Patient's ETA to Location:

5. ADDITIONAL RESOURCES / EQUIPMENT NEEDS:

Paramedic / EMT - Crews - Immobilization Devices - AED - Oxygen - Trauma Bag - IV/Fluid(s) - Splints - Rope rescue - Wheeled litter - HAZMAT - Extraction

6. COMMUNICATIONS: Identify State Air/Ground EMS Frequencies and Hospital Contacts as applicable

Function	Channel Name/Number	Receive (RX)	Tone/NAC *	Transmit (TX)	Tone/NAC *
COMMAND					
AIR-TO-GRND					
TACTICAL					

7. CONTINGENCY: *Considerations: If primary options fail, what actions can be implemented in conjunction with primary evacuation method? Be thinking ahead.*

8. ADDITIONAL INFORMATION: *Updates/Changes, etc.*

REMEMBER: Confirm ETAs of resources ordered. Act according to your level of training
Be Alert - Keep Calm - Think Clearly - Act Decisively

*** Follow up with MEDL upon return to ICP ***