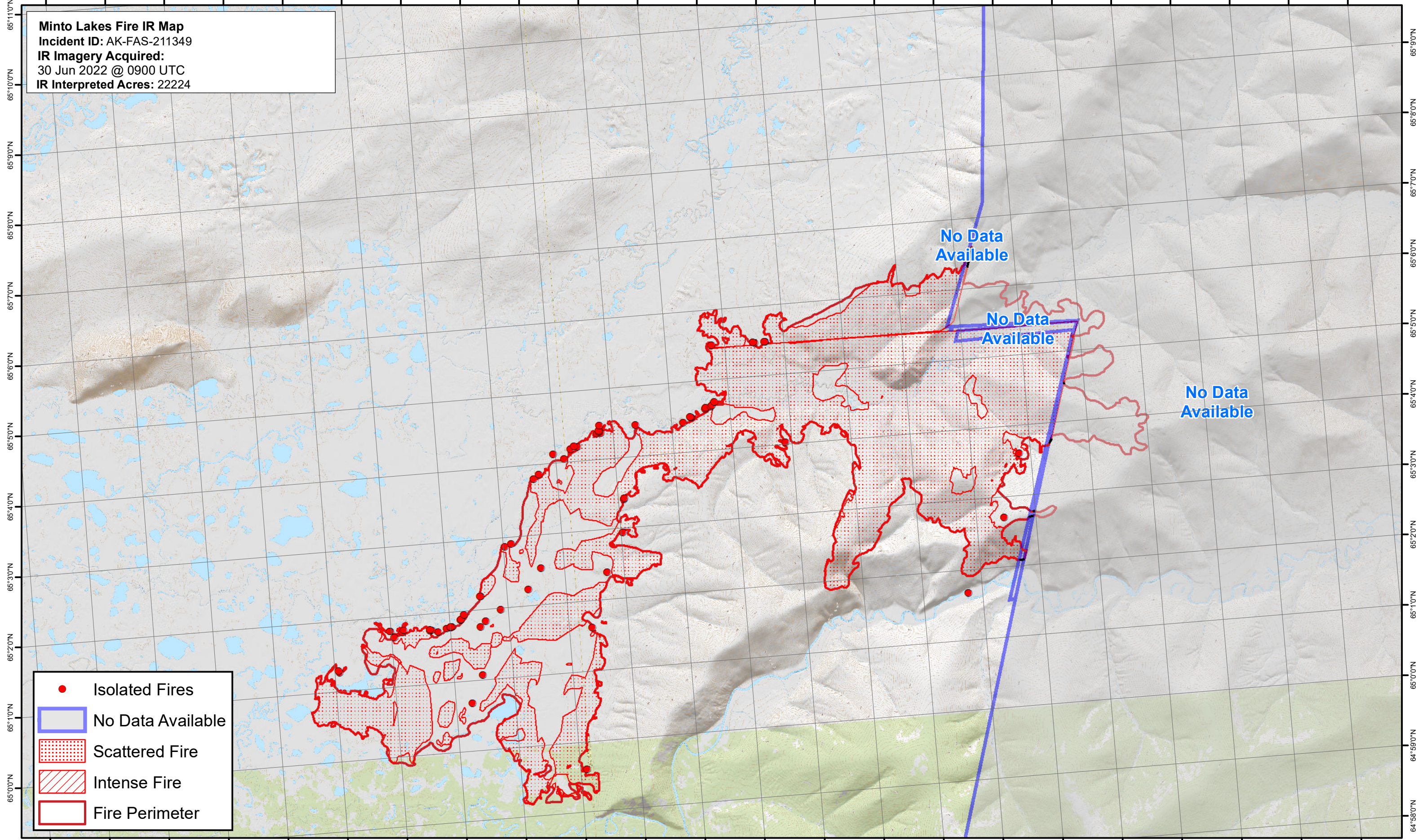




148°56'0"W 148°54'0"W 148°52'0"W 148°50'0"W 148°48'0"W 148°46'0"W 148°44'0"W 148°42'0"W 148°40'0"W 148°38'0"W 148°36'0"W 148°34'0"W 148°32'0"W 148°30'0"W 148°28'0"W 148°26'0"W 148°24'0"W 148°22'0"W 148°20'0"W 148°18'0"W 148°16'0"W 148°14'0"W 148°12'0"W

Minto Lakes Fire IR Map
Incident ID: AK-FAS-211349
IR Imagery Acquired:
30 Jun 2022 @ 0900 UTC
IR Interpreted Acres: 22224



No Data Available

No Data Available

No Data Available

- Isolated Fires
- No Data Available
- ▒ Scattered Fire
- ▨ Intense Fire
- ▭ Fire Perimeter

0 0.5 1 2 3 4 Miles