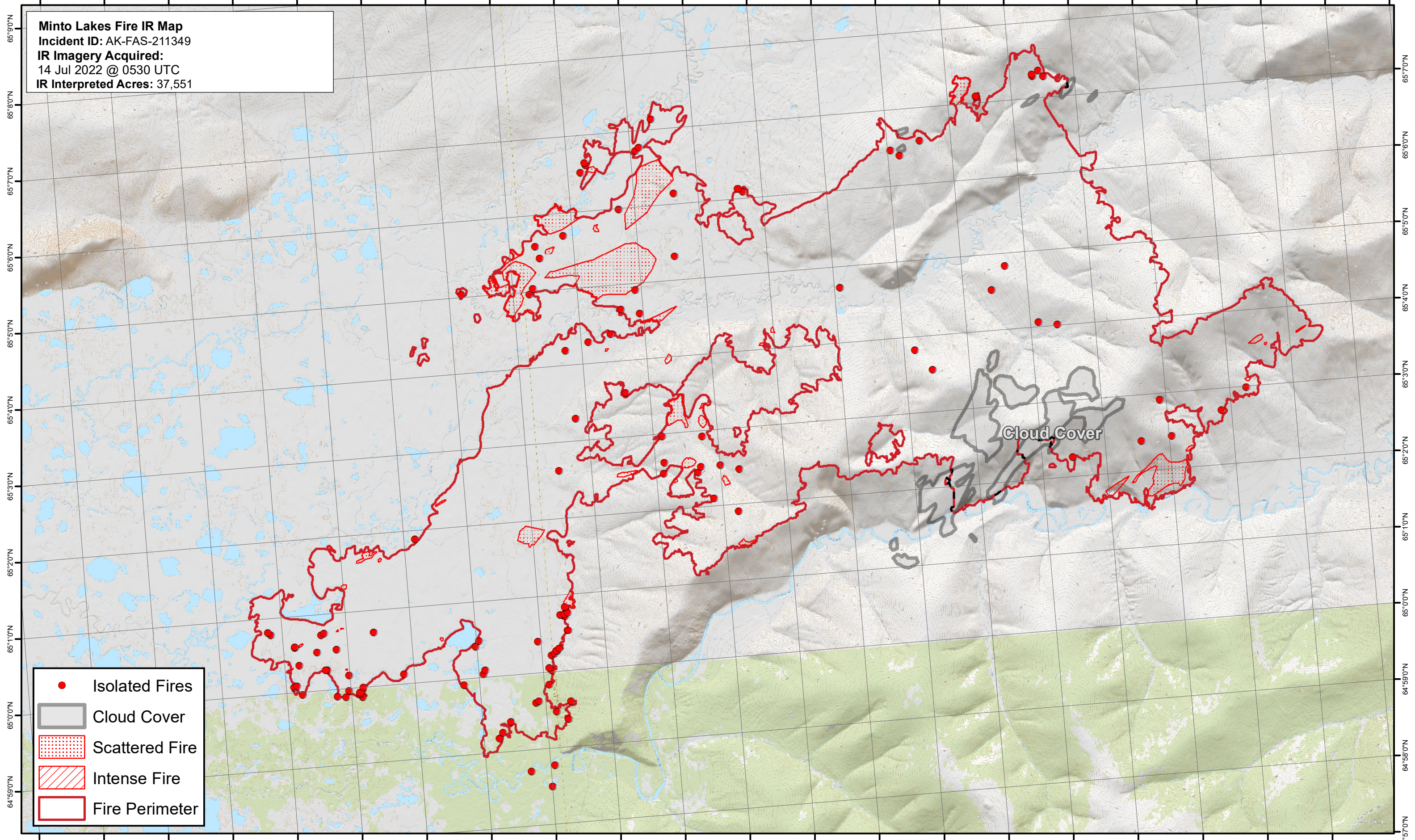




148°54'0"W 148°52'0"W 148°50'0"W 148°48'0"W 148°46'0"W 148°44'0"W 148°42'0"W 148°40'0"W 148°38'0"W 148°36'0"W 148°34'0"W 148°32'0"W 148°30'0"W 148°28'0"W 148°26'0"W 148°24'0"W 148°22'0"W 148°20'0"W 148°18'0"W 148°16'0"W 148°14'0"W 148°12'0"W

Minto Lakes Fire IR Map
Incident ID: AK-FAS-211349
IR Imagery Acquired:
14 Jul 2022 @ 0530 UTC
IR Interpreted Acres: 37,551



- Isolated Fires
- Cloud Cover
- ▨ Scattered Fire
- ▧ Intense Fire
- ▭ Fire Perimeter

Cloud Cover

0 0.5 1 2 3 4 Miles

148°56'0"W 148°54'0"W 148°52'0"W 148°50'0"W 148°48'0"W 148°46'0"W 148°44'0"W 148°42'0"W 148°40'0"W 148°38'0"W 148°36'0"W 148°34'0"W 148°32'0"W 148°30'0"W 148°28'0"W 148°26'0"W 148°24'0"W 148°22'0"W 148°20'0"W 148°18'0"W 148°16'0"W 148°14'0"W 148°12'0"W

Map date: 7/14/2022

Map created with USGS 63K Quads (Alaska); Projection: NAD 1983 2011 Alaska Albers