

Air Ops

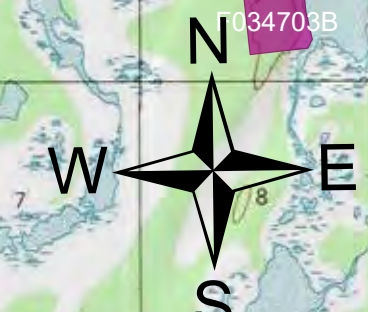
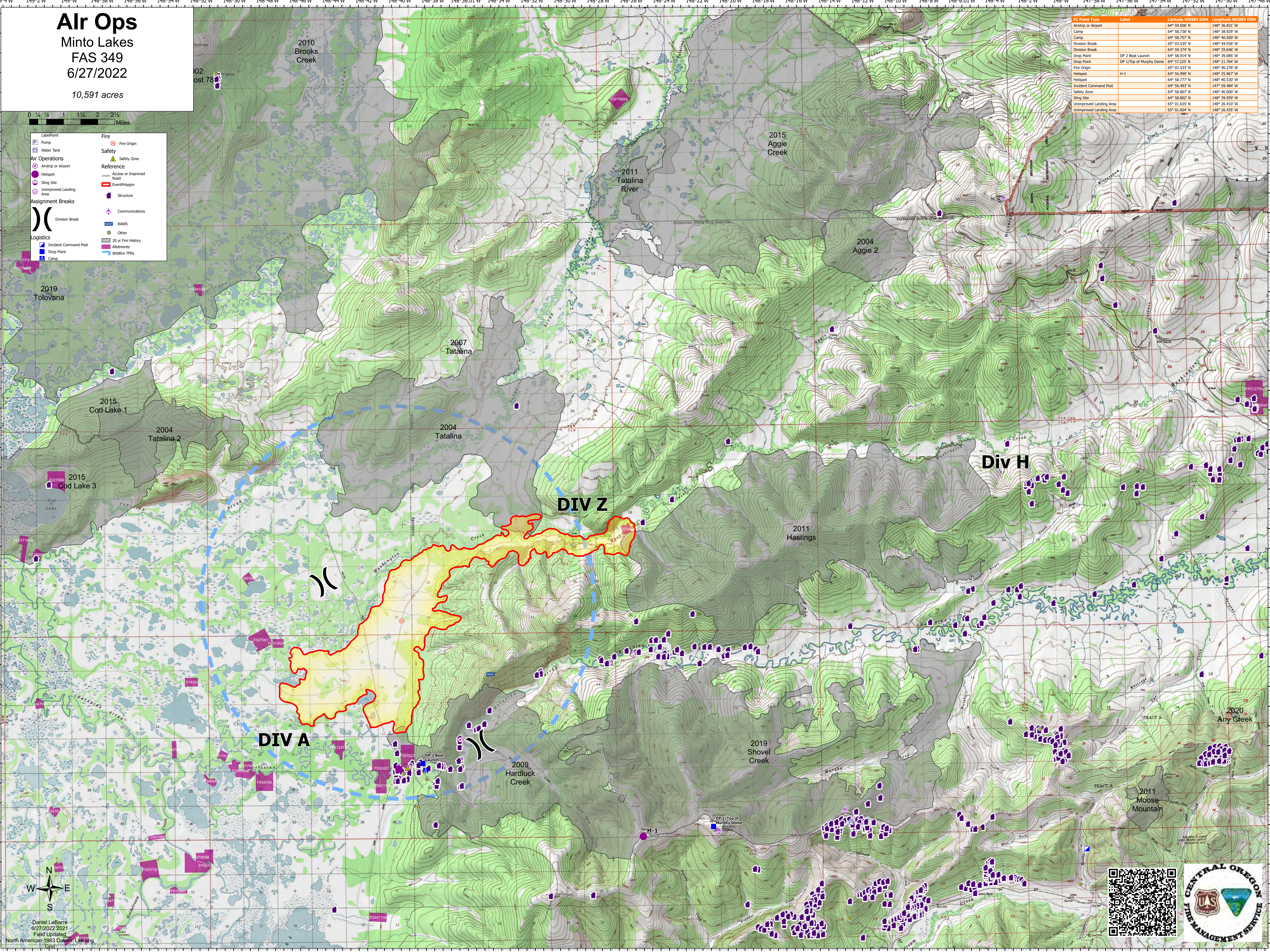
Minto Lakes
FAS 349
6/27/2022

10,591 acres

IC Point Type	Label	Latitude WGS84 DDM	Longitude WGS84 DDM
Airstrip or Airport		64° 59.500' N	148° 36.831' W
Camp		64° 58.738' N	148° 38.929' W
Camp		64° 58.757' N	148° 40.500' W
Division Break		65° 03.535' N	148° 44.936' W
Division Break		64° 59.374' N	148° 35.646' W
Drop Point	DP 2 Boat Launch	64° 58.914' N	148° 39.085' W
Drop Point	DP 1/Top of Murphy Dome	64° 57.225' N	148° 21.764' W
Fire Origin		65° 02.533' N	148° 40.278' W
Helispot	H-1	64° 56.999' N	148° 25.967' W
Helispot		64° 58.777' N	148° 40.530' W
Incident Command Post		64° 56.463' N	147° 59.484' W
Safety Zone		64° 58.807' N	148° 40.000' W
Sling Site		64° 58.802' N	148° 39.959' W
Unimproved Landing Area		65° 01.635' N	148° 26.410' W
Unimproved Landing Area		65° 01.604' N	148° 26.435' W

0 1/4 1/2 1 1 1/2 2 2 1/2 Miles

- Label Point
- Pump
- Water Tank
- Air Operations
 - Airstrip or Airport
 - Helispot
 - Sling Site
 - Unimproved Landing Area
- Assignment Breaks
 - Division Break
- Logistics
 - Incident Command Post
 - Drop Point
 - Camp
- Fire
 - Fire Origin
- Safety
 - Safety Zone
- Reference
 - Access or Improved Road
 - Event Polygon
 - Structure
 - Communications
 - RAWS
 - Other
 - 20 yr Fire History
 - Allotments
 - Wildfire TFRs



Daniel LaBarre
6/27/2022 2021
Field Updated
North American 1983 Datum

