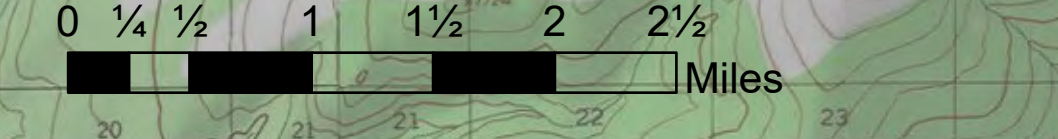


# Air Ops

Minto Lakes  
FAS 349  
6/29/2022

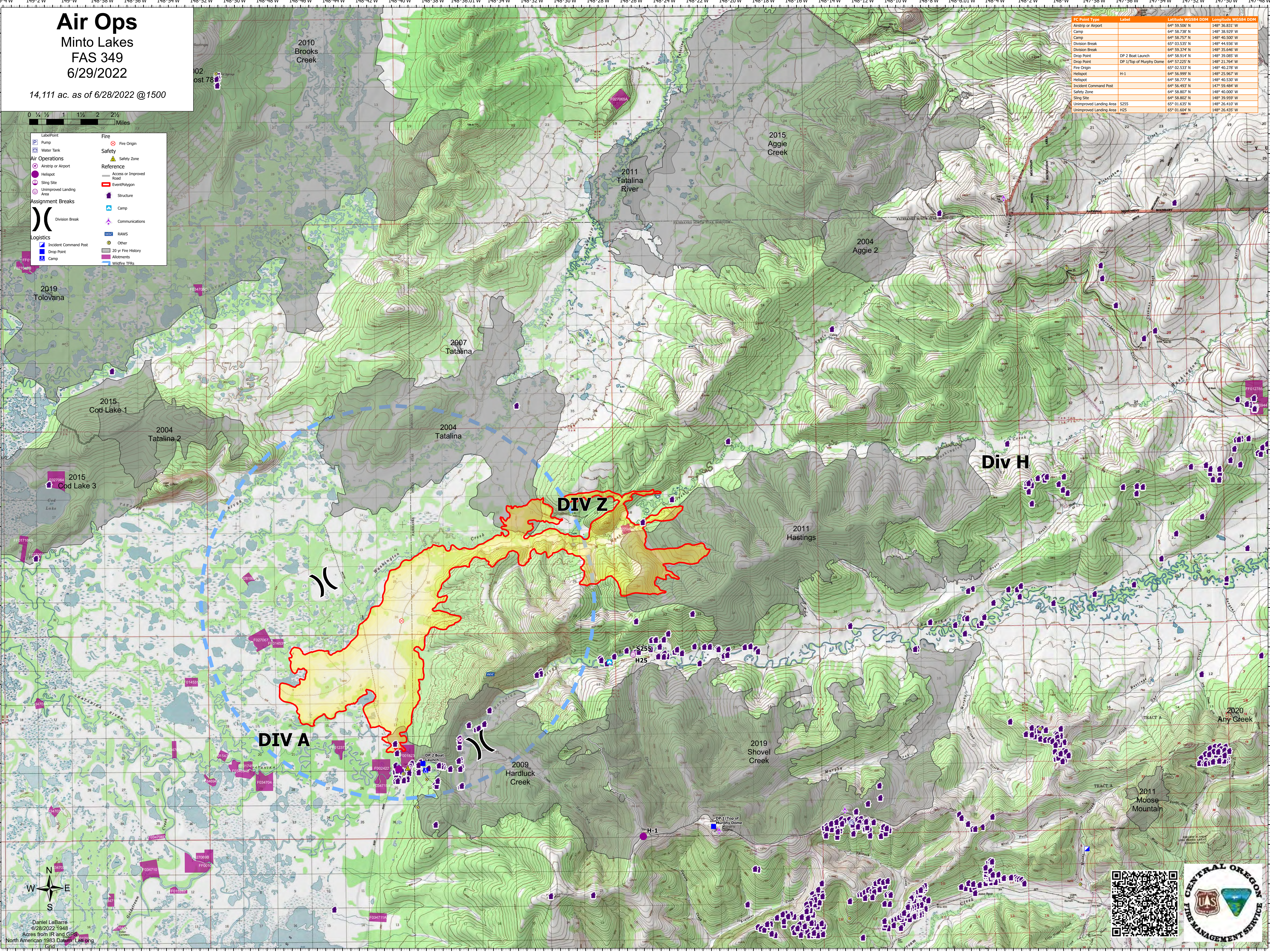
14,111 ac. as of 6/28/2022 @1500

IC Point Type	Label	Latitude WGS84 DDM	Longitude WGS84 DDM
Airstrip or Airport		64° 59.500' N	148° 36.831' W
Camp		64° 58.738' N	148° 38.929' W
Camp		64° 58.757' N	148° 40.500' W
Division Break		65° 03.535' N	148° 44.936' W
Division Break		64° 59.374' N	148° 35.646' W
Drop Point	DP 2 Boat Launch	64° 58.914' N	148° 39.085' W
Drop Point	DP 1/Top of Murphy Dome	64° 57.225' N	148° 21.764' W
Fire Origin		65° 02.533' N	148° 40.278' W
Helispot	H-1	64° 56.999' N	148° 25.967' W
Helispot		64° 58.777' N	148° 40.530' W
Incident Command Post		64° 56.467' N	147° 59.484' W
Safety Zone		64° 58.807' N	148° 40.000' W
Sling Site		64° 58.802' N	148° 39.959' W
Unimproved Landing Area	S255	65° 01.635' N	148° 26.410' W
Unimproved Landing Area	H25	65° 01.604' N	148° 26.435' W



**Legend**

- Label/Point**
  - Pump
  - Water Tank
- Air Operations**
  - Airstrip or Airport
  - Helispot
  - Sling Site
  - Unimproved Landing Area
- Assignment Breaks**
  - Division Break
- Logistics**
  - Incident Command Post
  - Drop Point
  - Camp
- Fire**
  - Fire Origin
- Safety**
  - Safety Zone
- Reference**
  - Access or Improved Road
  - Event Polygon
  - Structure
  - Camp
  - Communications
  - RAWS
  - Other
  - 20 yr Fire History
  - Allotments
  - Wildfire TRS



Daniel LaBarre  
6/28/2022 1948  
Acres from IR and GPS  
North American 1983 Datum - Lat Long

