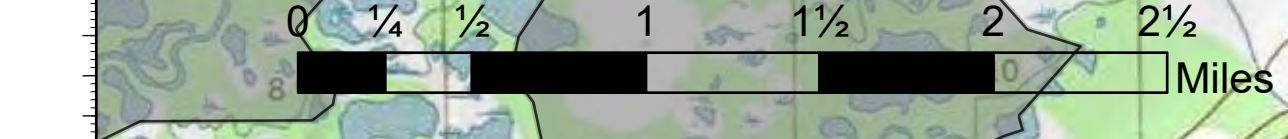


Operations

Minto Lakes
FAS 349
6/29/2022

14,111 ac. as of 6/28/2022 @1500

FC Point Type	Label	Latitude WGS84 DDM	Longitude WGS84 DDM
Airstrip or Airport		64° 59.506' N	148° 36.831' W
Camp		64° 58.738' N	148° 38.928' W
Camp		64° 58.757' N	148° 40.500' W
Division Break		65° 03.535' N	148° 44.930' W
Drop Point	DP 2 Boat Launch	64° 58.914' N	148° 39.085' W
Drop Point	DP 1/Top of Murphy Dome	64° 57.225' N	148° 21.764' W
Fire Origin		64° 03.532' N	148° 03.278' W
Helispot	H-1	64° 56.999' N	148° 25.967' W
Helispot	H25	65° 01.604' N	148° 26.435' W
Helispot		64° 58.777' N	148° 40.530' W
Incident Command Post		64° 56.493' N	147° 59.484' W
Safety Zone		64° 58.807' N	148° 40.000' W
Sling Site		64° 59.902' N	148° 39.959' W
Sling Site	S255	65° 01.635' N	148° 26.410' W



Road Centerlines

- Road

Air Operations

- Airstrip or Airport
- Helispot
- Sling Site

Assignment Breaks

- Division Break

Logistics

- Incident Command Post
- Drop Point
- Camp

Fire

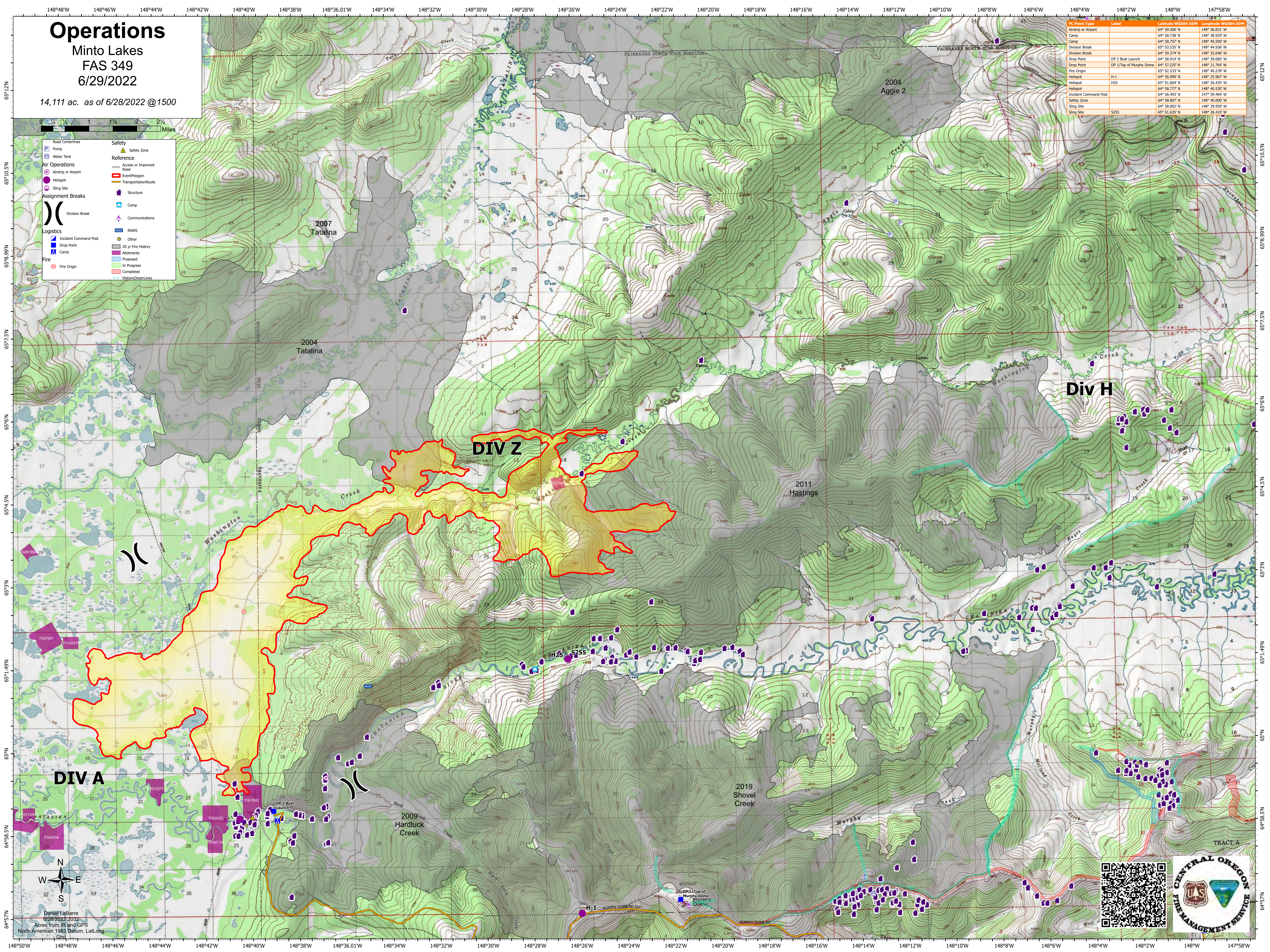
- Fire Origin

Safety

- Safety Zone

Reference

- Access or Improved Road
- EventPolygon
- TransportationRoute
- Structure
- Camp
- Communications
- RAWS
- Other
- 20 yr Fire History
- Allotments
- Proposed
- In Progress
- Completed
- Historic/DeerLines



DIV A

DIV Z

Div H

Daniel LaBarre
6/28/2022 2032
North American 1983 Datum. Lat/Long
Grid

