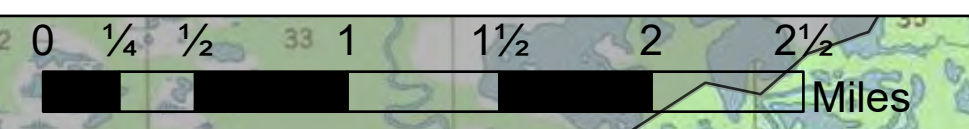


# Operations

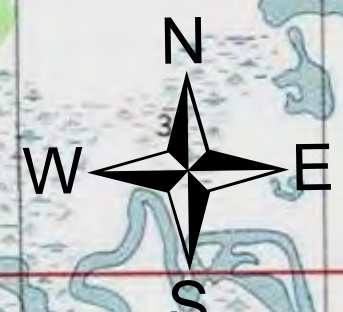
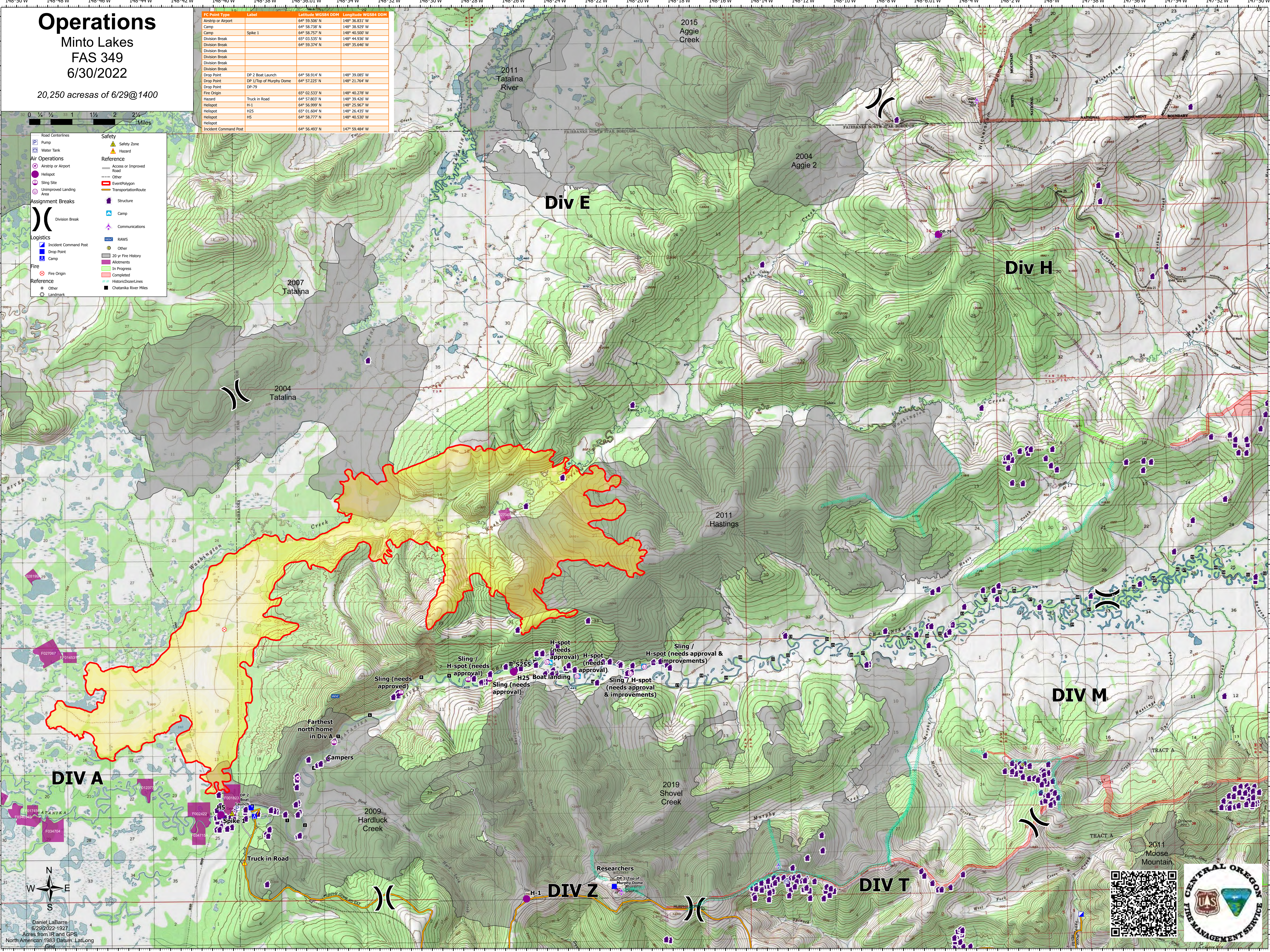
Minto Lakes  
FAS 349  
6/30/2022

20,250 acres as of 6/29@1400

FC Point Type	Label	Latitude WGS84 DDM	Longitude WGS84 DDM
Airstrip or Airport		64° 59.506' N	148° 36.831' W
Camp		64° 58.736' N	148° 38.926' W
Camp	Spike 1	64° 58.757' N	148° 40.500' W
Division Break		65° 03.535' N	148° 44.936' W
Division Break		64° 59.374' N	148° 35.646' W
Division Break			
Drop Point	DP 2 Boat Launch	64° 58.914' N	148° 39.085' W
Drop Point	DP 1/Top of Murphy Dome	64° 57.225' N	148° 21.764' W
Drop Point	DP-79		
Fire Origin		65° 02.533' N	148° 40.278' W
Hazard	Truck in Road	64° 57.802' N	148° 39.426' W
Helispot	H-1	64° 56.999' N	148° 25.967' W
Helispot	H25	65° 01.604' N	148° 26.435' W
Helispot	H5	64° 58.777' N	148° 40.530' W
Helispot			
Incident Command Post		64° 56.493' N	147° 59.484' W



- Safety**
  - Safety Zone
  - Hazard
- Air Operations**
  - Airstrip or Airport
  - Helispot
  - Sling Site
  - Unimproved Landing Area
- Assignment Breaks**
  - Division Break
- Logistics**
  - Incident Command Post
  - Drop Point
  - Camp
- Fire**
  - Fire Origin
- Reference**
  - Other
  - Landmark
- Reference**
  - Access or Improved Road
  - Other
  - EventPolygon
  - TransportationRoute
- Structure**
  - Structure
  - Camp
  - Communications
- RAWS**
  - Other
  - 20 yr Fire History
  - Allotments
  - In Progress
  - Completed
  - HistoricDeerLines
  - Chatahqua River Miles



Daniel LaBarre  
6/29/2022-1927  
Acres from IR and GPS  
North American 1983 Datum, Lat/Long

