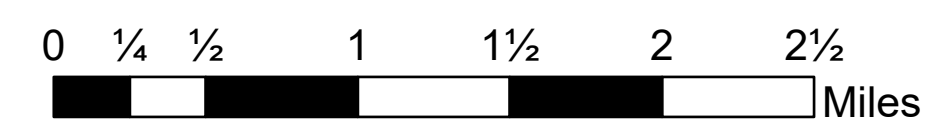


Operations

Minto Lakes
AK-FAS-211349
7/11/2022

22,218 acres of 6/30@1400



Road Centerlines
Pump
Water Tank

Air Operations
Airstrip or Airport
Helispot
Slingsite
Unimproved Landing Area

Assignment Breaks
Division Break

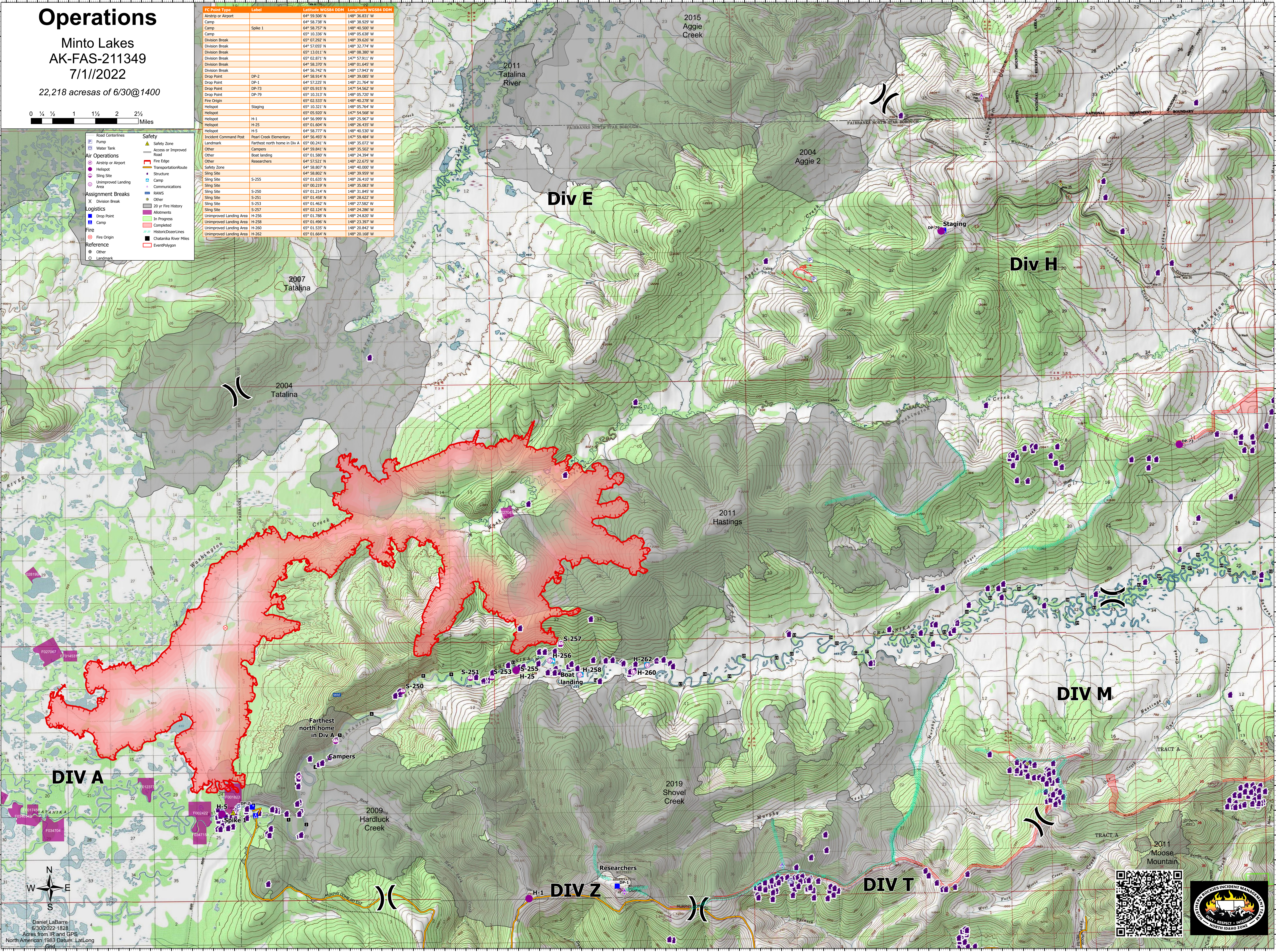
Logistics
Drop Point
Camp

Fire
Fire Origin

Reference
Other
Landmark

Safety
Safety Zone
Access or Improved Road
Fire Edge
Transportation/Route
Structure
Camp
Communications
RAWs
Other
20 yr Fire History
Allotments
In Progress
Completed
Historic/Boiler Lines
Chatanika River Miles
Event/Polymon

FC Point Type	Label	Latitude WGS84 DDM	Longitude WGS84 DDM
Airstrip or Airport		64° 59.500' N	148° 36.831' W
Camp		64° 58.738' N	148° 38.939' W
Camp	Spike 1	64° 58.757' N	148° 40.500' W
Camp		65° 10.336' N	148° 05.638' W
Division Break		65° 07.292' N	148° 39.626' W
Division Break		64° 57.055' N	148° 32.774' W
Division Break		65° 13.011' N	148° 08.300' W
Division Break		65° 02.871' N	147° 57.911' W
Division Break		64° 58.370' N	148° 01.645' W
Division Break		64° 56.742' N	148° 17.943' W
Drop Point	DP-2	64° 58.914' N	148° 39.085' W
Drop Point	DP-1	64° 57.225' N	148° 21.764' W
Drop Point	DP-73	65° 05.915' N	147° 54.362' W
Drop Point	DP-79	65° 10.311' N	148° 05.720' W
Fire Origin		65° 02.533' N	148° 40.278' W
Helispot	Staging	65° 10.321' N	148° 05.764' W
Helispot		65° 05.920' N	147° 54.568' W
Helispot	H-1	64° 56.999' N	148° 25.967' W
Helispot	H-25	65° 01.694' N	148° 26.335' W
Helispot	H-5	64° 58.777' N	148° 40.530' W
Incident Command Post	Pearl Creek Elementary	64° 56.493' N	147° 59.484' W
Landmark	Farthest north home in Div A	65° 00.241' N	148° 35.072' W
Other	Campers	64° 59.841' N	148° 35.502' W
Other	Boat landing	65° 01.580' N	148° 24.394' W
Other	Researchers	64° 58.232' N	148° 22.935' W
Safety Zone		64° 58.807' N	148° 40.800' W
Slingsite		64° 58.802' N	148° 39.959' W
Slingsite	S-255	65° 01.635' N	148° 26.410' W
Slingsite		65° 00.219' N	148° 35.083' W
Slingsite	S-250	65° 01.214' N	148° 31.845' W
Slingsite	S-251	65° 01.498' N	148° 28.622' W
Slingsite	S-253	65° 01.462' N	148° 27.582' W
Slingsite	S-257	65° 02.124' N	148° 24.886' W
Unimproved Landing Area	H-256	65° 01.788' N	148° 24.820' W
Unimproved Landing Area	H-258	65° 01.496' N	148° 23.397' W
Unimproved Landing Area	H-260	65° 01.535' N	148° 20.842' W
Unimproved Landing Area	H-262	65° 01.664' N	148° 20.168' W



Daniel LaBarre
6/30/2022-1828
Acres from IR and GPS
North American 1983 Datum, Lat/Long

