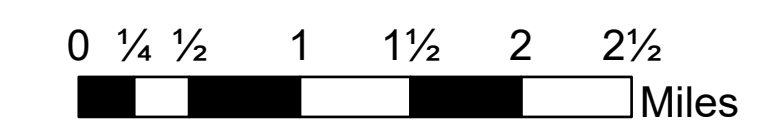


Operations

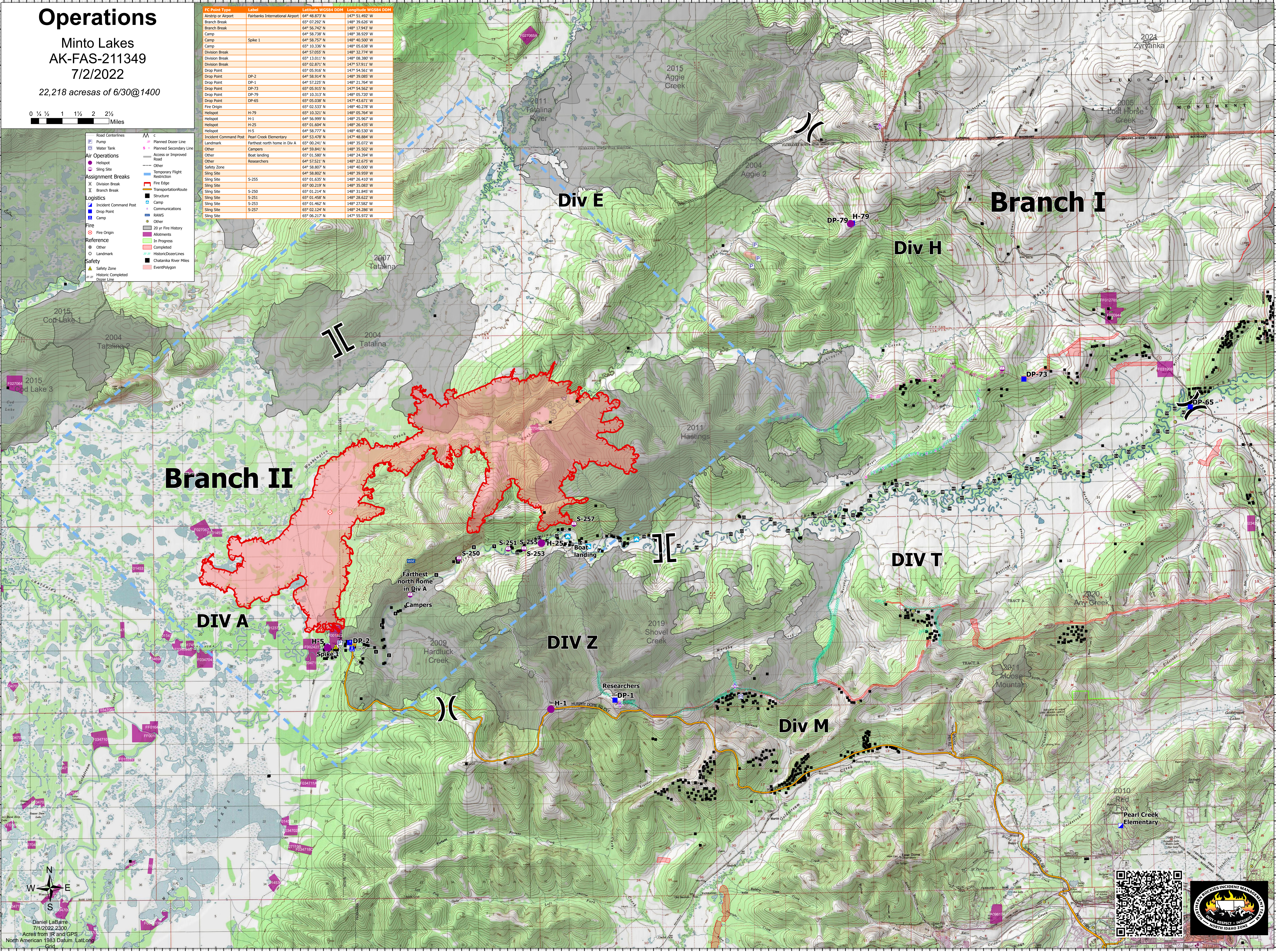
Minto Lakes
AK-FAS-211349
7/2/2022

22,218 acres as of 6/30@1400



| FC Point Type | Label | Latitude WGS84 DDM | Longitude WGS84 DDM |
|-----------------------|---------------------------------|--------------------|---------------------|
| Airstrip or Airport | Fairbanks International Airport | 64° 48.873' N | 147° 51.492' W |
| Branch Break | | 65° 07.292' N | 148° 39.626' W |
| Branch Break | | 64° 56.742' N | 148° 17.943' W |
| Camp | | 64° 58.738' N | 148° 38.929' W |
| Camp | Spike 1 | 64° 58.757' N | 148° 40.500' W |
| Camp | | 65° 10.336' N | 148° 05.638' W |
| Division Break | | 65° 57.055' N | 148° 32.774' W |
| Division Break | | 65° 13.011' N | 148° 08.382' W |
| Division Break | | 65° 02.871' N | 147° 57.911' W |
| Drop Point | | 65° 05.916' N | 147° 54.561' W |
| Drop Point | DP-2 | 64° 58.914' N | 148° 39.085' W |
| Drop Point | DP-1 | 64° 57.225' N | 148° 21.764' W |
| Drop Point | DP-73 | 65° 05.915' N | 148° 32.774' W |
| Drop Point | DP-79 | 65° 13.312' N | 148° 05.722' W |
| Drop Point | DP-65 | 65° 05.038' N | 147° 43.671' W |
| Fire Origin | | 65° 02.533' N | 148° 40.278' W |
| Helispot | H-79 | 65° 10.321' N | 148° 05.764' W |
| Helispot | H-1 | 64° 56.999' N | 148° 25.967' W |
| Helispot | H-25 | 65° 01.604' N | 148° 26.635' W |
| Helispot | H-5 | 64° 58.777' N | 148° 40.530' W |
| Incident Command Post | Pearl Creek Elementary | 64° 53.478' N | 147° 48.884' W |
| Landmark | Farthest north home in Div A | 65° 00.241' N | 148° 35.072' W |
| Landmark | Campers | 64° 59.841' N | 148° 35.502' W |
| Other | Boat landing | 65° 01.580' N | 148° 24.394' W |
| Other | Researchers | 65° 01.521' N | 148° 22.675' W |
| Safety Zone | | 64° 58.807' N | 148° 40.802' W |
| Sling Site | | 64° 58.802' N | 148° 39.959' W |
| Sling Site | S-255 | 65° 01.635' N | 148° 26.410' W |
| Sling Site | | 65° 00.219' N | 148° 35.083' W |
| Sling Site | S-250 | 65° 01.214' N | 148° 31.845' W |
| Sling Site | S-251 | 65° 01.458' N | 148° 28.622' W |
| Sling Site | S-253 | 65° 01.462' N | 148° 27.822' W |
| Sling Site | S-257 | 65° 02.124' N | 148° 24.286' W |
| Sling Site | | 65° 06.217' N | 147° 55.972' W |

- Road Centerlines
- Pump
- Water Tank
- Air Operations
 - Helispot
 - Sling Site
- Assignment Breaks
 - Division Break
 - Branch Break
- Logistics
 - Incident Command Post
 - Drop Point
 - Camp
 - Other
- Fire
 - Fire Origin
 - 20 yr Fire History
- Reference
 - Other
 - Landmark
- Safety
 - Safety Zone
 - Historic Completed Dozer Line



Daniel LaBarre
7/1/2022 2300
Acres from IR and GPS
North American 1983 Datum. Lat/Long

