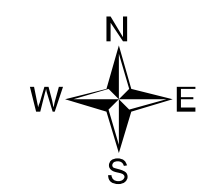
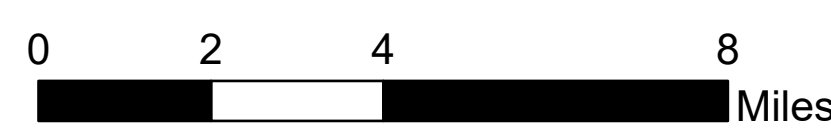


Air Operations

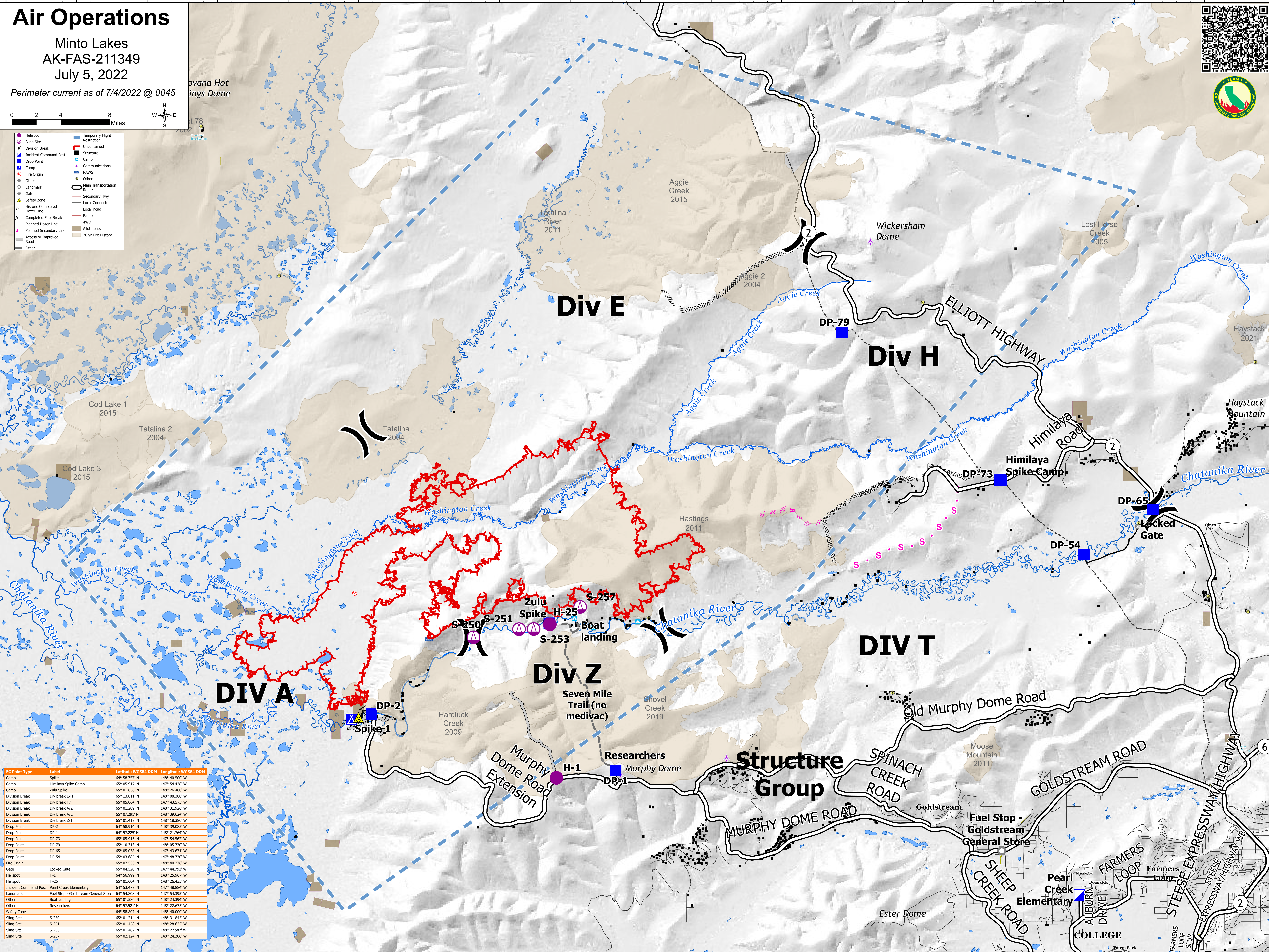
Minto Lakes
AK-FAS-211349
July 5, 2022

Perimeter current as of 7/4/2022 @ 0045



- Helispot
- Sling Site
- X Division Break
- Incident Command Post
- Drop Point
- Camp
- Fire Origin
- Other
- Landmark
- Gate
- Safety Zone
- Historic Completed Door Line
- Completed Fuel Break
- Planned Dozer Line
- Planned Secondary Line
- Access or Improved Road
- Other
- Temporary Flight Restriction
- Unclassified
- Structure
- Camp
- Communications
- RAWs
- Other
- Main Transportation Route
- Secondary Hwy
- Local Connector
- Local Road
- Ramp
- 4WD
- Allotments
- 20 yr Fire History
- Other

FC Point Type	Label	Latitude WGS84 DDM	Longitude WGS84 DDM
Camp	Spike 1	64° 58.757' N	148° 40.500' W
Camp	Himilaya Spike Camp	65° 05.917' N	147° 54.328' W
Camp	Zulu Spike	65° 01.638' N	148° 26.480' W
Division Break	Div break E/H	65° 13.011' N	148° 08.380' W
Division Break	Div break H/T	65° 05.064' N	147° 43.573' W
Division Break	Div break A/Z	65° 01.209' N	148° 31.926' W
Division Break	Div break A/E	65° 07.291' N	148° 39.624' W
Division Break	Div break Z/T	65° 01.416' N	148° 18.380' W
Drop Point	DP-2	64° 58.914' N	148° 39.085' W
Drop Point	DP-1	64° 57.225' N	148° 21.764' W
Drop Point	DP-73	65° 05.915' N	147° 54.562' W
Drop Point	DP-79	65° 10.313' N	148° 05.720' W
Drop Point	DP-65	65° 05.038' N	147° 43.671' W
Drop Point	DP-54	65° 03.680' N	147° 48.700' W
Fire Origin	S-250	65° 02.533' N	148° 40.278' W
Gate	Locked Gate	65° 04.520' N	147° 44.792' W
Helispot	H-1	64° 56.999' N	148° 25.967' W
Helispot	H-25	65° 01.604' N	148° 26.435' W
Incident Command Post	Pearl Creek Elementary	64° 53.478' N	147° 48.884' W
Landmark	Fuel Stop - Goldstream General Store	64° 54.808' N	147° 54.395' W
Other	Boat landing	65° 01.580' N	148° 24.394' W
Other	Researchers	64° 57.521' N	148° 22.675' W
Safety Zone	Researchers	64° 58.807' N	148° 40.000' W
Sling Site	S-250	65° 01.214' N	148° 31.845' W
Sling Site	S-251	65° 01.458' N	148° 28.622' W
Sling Site	S-253	65° 01.462' N	148° 27.982' W
Sling Site	S-257	65° 02.124' N	148° 24.286' W



149°55'W 149°W 148°55'W 148°50'W 148°45'W 148°40'W 148°35'W 148°30'W 148°25'W 148°20'W 148°15'W 148°10'W 148°5'W 148°W 147°55'W 147°50'W 147°45'W 147°40'W