

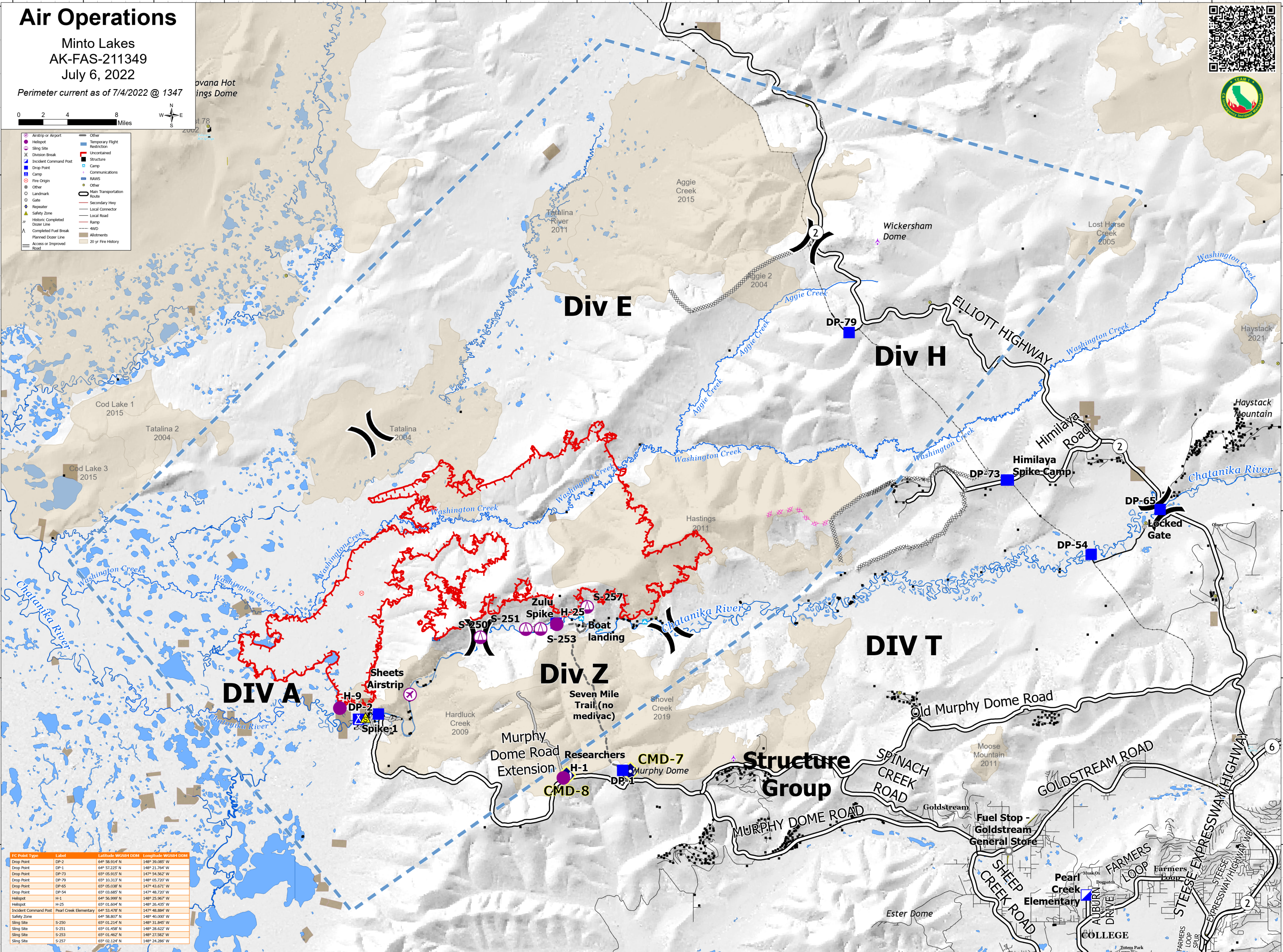
Air Operations

Minto Lakes
AK-FAS-211349
July 6, 2022

Perimeter current as of 7/4/2022 @ 1347



- Airstrip or Airport
- ✕ Helispot
- ✕ Sling Site
- ✕ Division Break
- ✕ Incident Command Post
- Drop Point
- Camp
- Fire Origin
- Other
- Landmark
- Gate
- ▲ Repeater
- ▲ Safety Zone
- ▲ Historic Completed Dozer Line
- ▲ Completed Fuel Break
- ▲ Planned Dozer Line
- ▲ Access or Improved Road
- Other
- Temporary Flight Restriction
- Uncontained
- Structure
- Camp
- Communications
- RAWs
- Other
- Main Transportation Route
- Secondary Hwy
- Local Connector
- Local Road
- Ramp
- AWD
- Allotments
- 20 yr Fire History



FC Point Type	Label	Latitude WGS84 DDM	Longitude WGS84 DDM
Drop Point	DP-2	64° 58.914' N	148° 39.085' W
Drop Point	DP-73	64° 57.225' N	148° 21.764' W
Drop Point	DP-79	65° 05.915' N	147° 54.562' W
Drop Point	DP-65	65° 03.313' N	148° 05.720' W
Drop Point	DP-54	65° 03.685' N	147° 48.720' W
Helispot	H-1	64° 56.999' N	148° 25.967' W
Helispot	H-25	65° 01.604' N	148° 26.435' W
Incident Command Post	Pearl Creek Elementary	64° 53.478' N	147° 48.884' W
Safety Zone	S-230	64° 58.007' N	148° 40.007' W
Sling Site	S-250	65° 01.214' N	148° 31.845' W
Sling Site	S-251	65° 01.458' N	148° 28.622' W
Sling Site	S-253	65° 01.462' N	148° 27.582' W
Sling Site	S-257	65° 02.124' N	148° 24.286' W