

# Air Operations

Minto Lakes  
AK-FAS-211349  
July 7, 2022

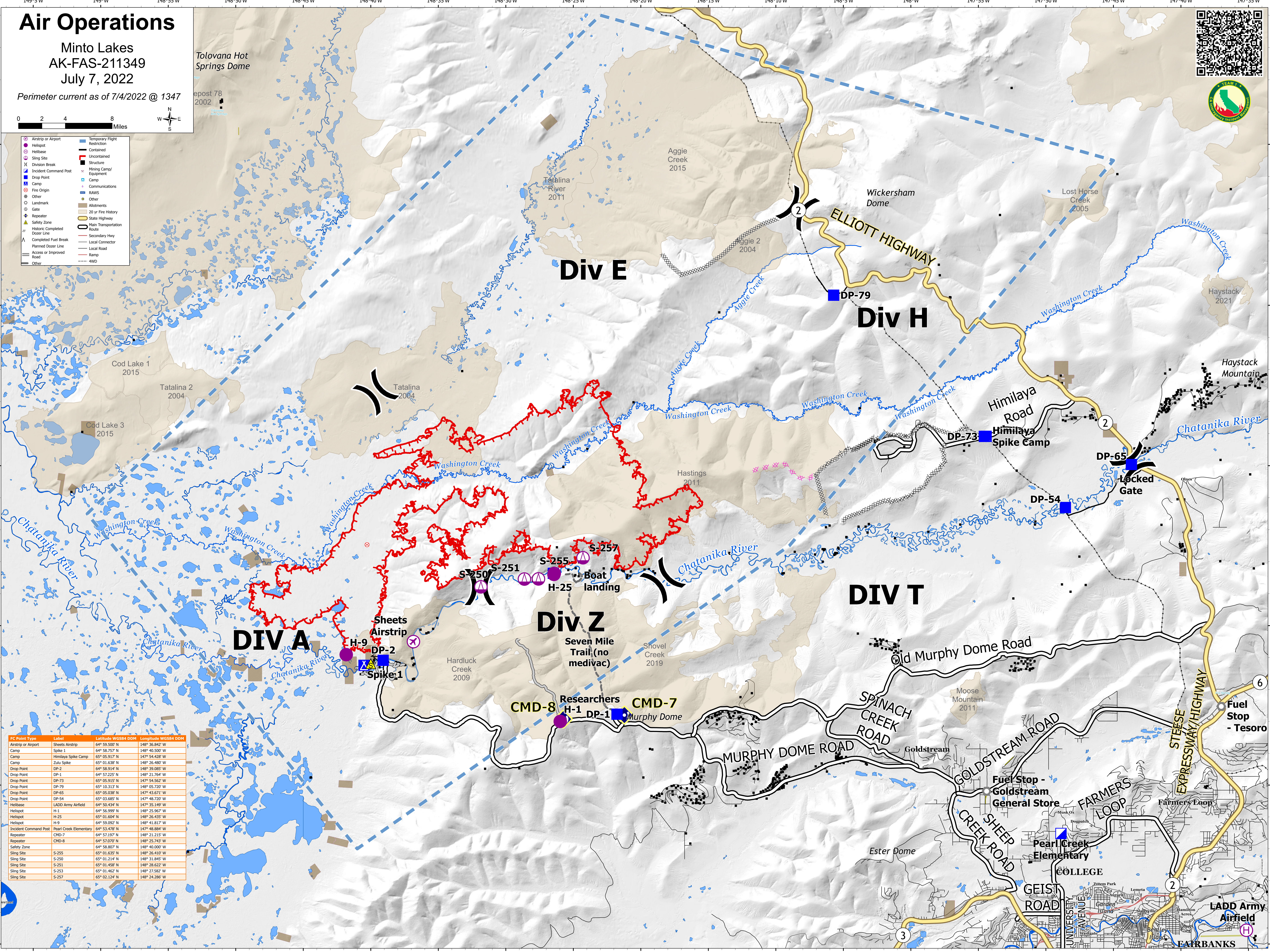
Perimeter current as of 7/4/2022 @ 1347

Tolovana Hot Springs Dome

Post 78  
2002



- Airstrip or Airport
- Helibase
- ✕ Sling Site
- X Division Break
- Incident Command Post
- ▲ Drop Point
- Camp
- Fire Origin
- Other
- Landmark
- Gate
- Repeater
- Safety Zone
- Historic Completed Dozer Line
- Completed Fuel Break
- Planned Dozer Line
- Access or Improved Road
- Other
- Temporary Flight Restriction
- Contained
- Uncontained
- Structure
- Mining Camp/Equipment
- Camp
- Communications
- RAWIS
- Other
- Allotments
- 20 yr Fire History
- State Highway
- Main Transportation Route
- Secondary Hwy
- Local Connector
- Local Road
- Ramp
- 4WD



IC Point Type	Label	Latitude UTM34 DDM	Longitude UTM34 DDM
Airstrip or Airport	Sheets Airstrip	64° 59.500' N	148° 35.842' W
Camp	Spike 1	64° 58.757' N	148° 40.500' W
Camp	Himilaya Spike Camp	65° 05.917' N	147° 54.428' W
Camp	Zulu Spike	65° 01.638' N	148° 26.480' W
Drop Point	DP-2	64° 58.914' N	148° 39.085' W
Drop Point	DP-1	64° 57.225' N	148° 21.764' W
Drop Point	DP-73	65° 05.915' N	147° 54.562' W
Drop Point	DP-79	65° 10.313' N	148° 05.720' W
Drop Point	DP-65	65° 03.688' N	147° 43.671' W
Drop Point	DP-54	65° 03.685' N	147° 48.720' W
Helibase	LADD Army Airfield	64° 50.434' N	147° 35.149' W
Helispot	H-1	64° 56.999' N	148° 25.967' W
Helispot	H-25	65° 01.604' N	148° 26.457' W
Helispot	H-9	64° 59.092' N	148° 41.817' W
Incident Command Post	Pearl Creek Elementary	64° 53.478' N	147° 48.884' W
Repeater	CMD-7	64° 57.197' N	148° 21.215' W
Repeater	CMD-8	64° 57.070' N	148° 25.743' W
Safety Zone		64° 58.807' N	148° 40.000' W
Sling Site	S-255	65° 01.032' N	148° 26.410' W
Sling Site	S-250	65° 01.214' N	148° 31.845' W
Sling Site	S-251	65° 01.458' N	148° 28.622' W
Sling Site	S-253	65° 01.462' N	148° 27.582' W
Sling Site	S-257	65° 02.124' N	148° 24.286' W