



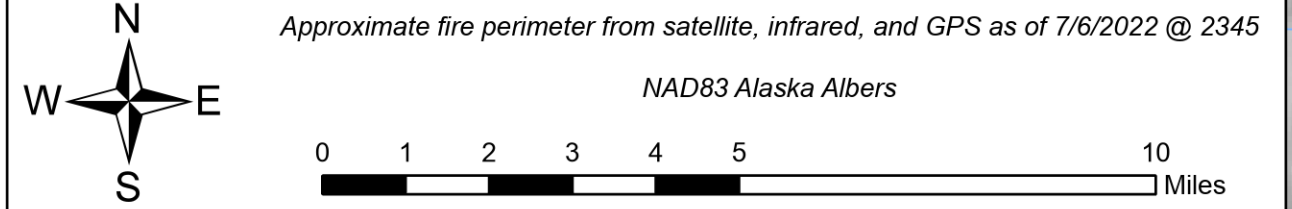
# Air Operations

## Minto Lakes AK-AFS-211349

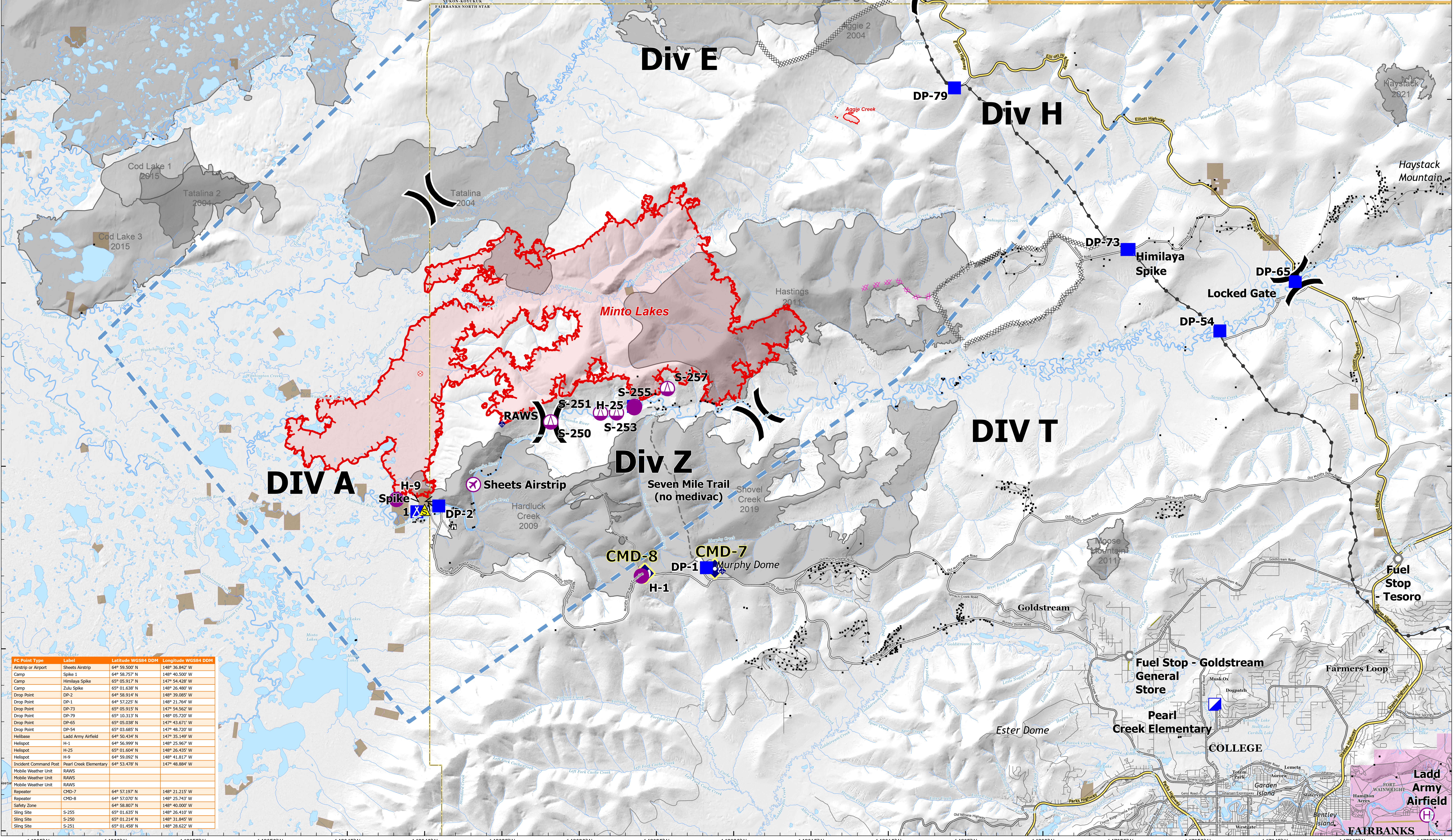
July 8, 2022

Tolovana Hot Springs Dome

Milepost 7B  
2002



- 2022 Fire
- - - Historic Fire (2002-2021; >200 ac.)
- County Boundary
- Alaska Native Allotment
- White Mountains NRA (BIA)
- Fort Wainright (DOD)
- Contained Fire Edge
- Uncontained Fire Edge
- Completed Dozer Line
- Planned Dozer Line
- Access or Improved Road
- Other
- Temporary Flight Restriction
- Trans-Alaska Pipeline
- State Highway
- Secondary Route
- Incident Route
- Local Road
- Airstrip or Airport
- Heliport
- Heliport
- Planned Dozer Line
- Sling Site
- Division Break
- Incident Command Post
- Drop Point
- Camp
- Lookout
- Fire Origin
- Other
- Landmark
- Gate
- Mobile Weather Unit
- Repeater
- Safety Zone
- Structure



FC Point Type	Label	Latitude WGS84 DDM	Longitude WGS84 DDM
Airstrip or Airport	Sheets Airstrip	64° 59.500' N	148° 36.842' W
Camp	Spike 1	64° 58.757' N	148° 40.500' W
Camp	Himalaya Spike	65° 05.917' N	147° 54.428' W
Camp	Zulu Spike	65° 01.638' N	148° 26.480' W
Drop Point	DP-2	64° 58.914' N	148° 39.085' W
Drop Point	DP-1	64° 53.225' N	148° 31.764' W
Drop Point	DP-73	65° 05.915' N	147° 54.562' W
Drop Point	DP-79	65° 10.313' N	148° 05.720' W
Drop Point	DP-65	65° 05.038' N	147° 43.671' W
Drop Point	DP-54	65° 03.685' N	147° 48.720' W
Heliport	Ladd Army Airfield	64° 50.434' N	147° 35.149' W
Heliport	H-1	64° 55.999' N	148° 25.967' W
Heliport	H-25	65° 01.604' N	148° 26.435' W
Heliport	H-9	64° 59.992' N	148° 41.817' W
Incident Command Post	Pearl Creek Elementary	64° 53.478' N	147° 48.884' W
Mobile Weather Unit	RAWS		
Mobile Weather Unit	RAWS		
Repeater	CMD-7	64° 57.197' N	148° 21.215' W
Repeater	CMD-8	64° 57.070' N	148° 25.743' W
Safety Zone		64° 58.807' N	148° 40.000' W
Sling Site	S-255	65° 01.635' N	148° 26.410' W
Sling Site	S-250	65° 01.214' N	148° 31.845' W
Sling Site	S-251	65° 01.458' N	148° 28.632' W