

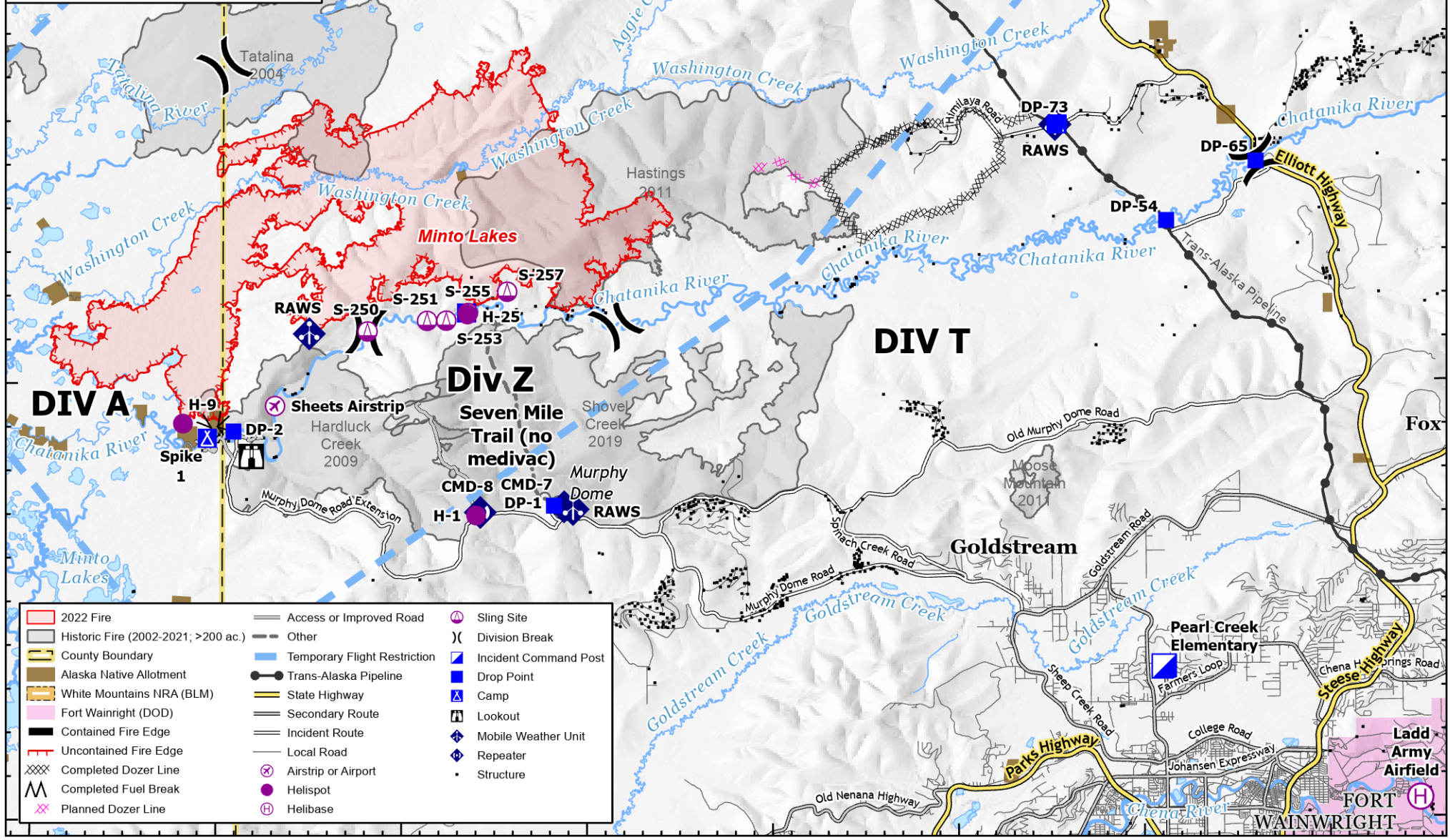
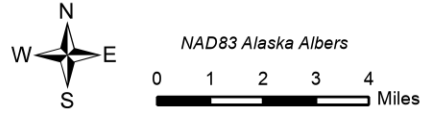
148°50'W 148°40'W 148°30'W 148°20'W 148°10'W 148°0'W 147°50'W 147°40'W



Pilot Map

Minto Lakes
AK-AFS-211349
July 8, 2022

Approximate fire perimeter from satellite, infrared, and GPS as of 7/6/2022 @ 2345



	2022 Fire		Access or Improved Road		Sling Site
	Historic Fire (2002-2021; >200 ac.)		Other		Division Break
	County Boundary		Temporary Flight Restriction		Incident Command Post
	Alaska Native Allotment		Trans-Alaska Pipeline		Drop Point
	White Mountains NRA (BLM)		State Highway		Camp
	Fort Wainwright (DOD)		Secondary Route		Lookout
	Contained Fire Edge		Incident Route		Mobile Weather Unit
	Uncontained Fire Edge		Local Road		Repeater
	Completed Dozer Line		Airstrip or Airport		Structure
	Completed Fuel Break		Helispot		Helibase
	Planned Dozer Line				

148°50'W 148°40'W 148°30'W 148°20'W 148°10'W 148°0'W 147°50'W 147°40'W

65°10'N

65°0'N

65°10'N

65°0'N

64°50'N

FC Point Type	Label	Latitude WGS84 DDM	Longitude WGS84 DDM
Airstrip or Airport	Sheets Airstrip	64° 59.500' N	148° 36.842' W
Camp	Spike 1	64° 58.757' N	148° 40.500' W
Camp	Himilaya Spike	65° 05.917' N	147° 54.428' W
Camp	Zulu Spike	65° 01.638' N	148° 26.480' W
Drop Point	DP-2	64° 58.914' N	148° 39.085' W
Drop Point	DP-1	64° 57.225' N	148° 21.764' W
Drop Point	DP-73	65° 05.915' N	147° 54.562' W
Drop Point	DP-79	65° 10.313' N	148° 05.720' W
Drop Point	DP-65	65° 05.038' N	147° 43.671' W
Drop Point	DP-54	65° 03.685' N	147° 48.720' W
Helibase	Ladd Army Airfield	64° 50.434' N	147° 35.149' W
Helispot	H-1	64° 56.999' N	148° 25.967' W
Helispot	H-25	65° 01.604' N	148° 26.435' W
Helispot	H-9	64° 59.092' N	148° 41.817' W
Incident Command Post	Pearl Creek Elementary	64° 53.478' N	147° 48.884' W
Mobile Weather Unit	RAWS		
Mobile Weather Unit	RAWS		
Mobile Weather Unit	RAWS		
Repeater	CMD-7	64° 57.197' N	148° 21.215' W
Repeater	CMD-8	64° 57.070' N	148° 25.743' W
Safety Zone		64° 58.807' N	148° 40.000' W
Sling Site	S-255	65° 01.635' N	148° 26.410' W
Sling Site	S-250	65° 01.214' N	148° 31.845' W
Sling Site	S-251	65° 01.458' N	148° 28.622' W
Sling Site	S-253	65° 01.462' N	148° 27.582' W
Sling Site	S-257	65° 02.124' N	148° 24.286' W