

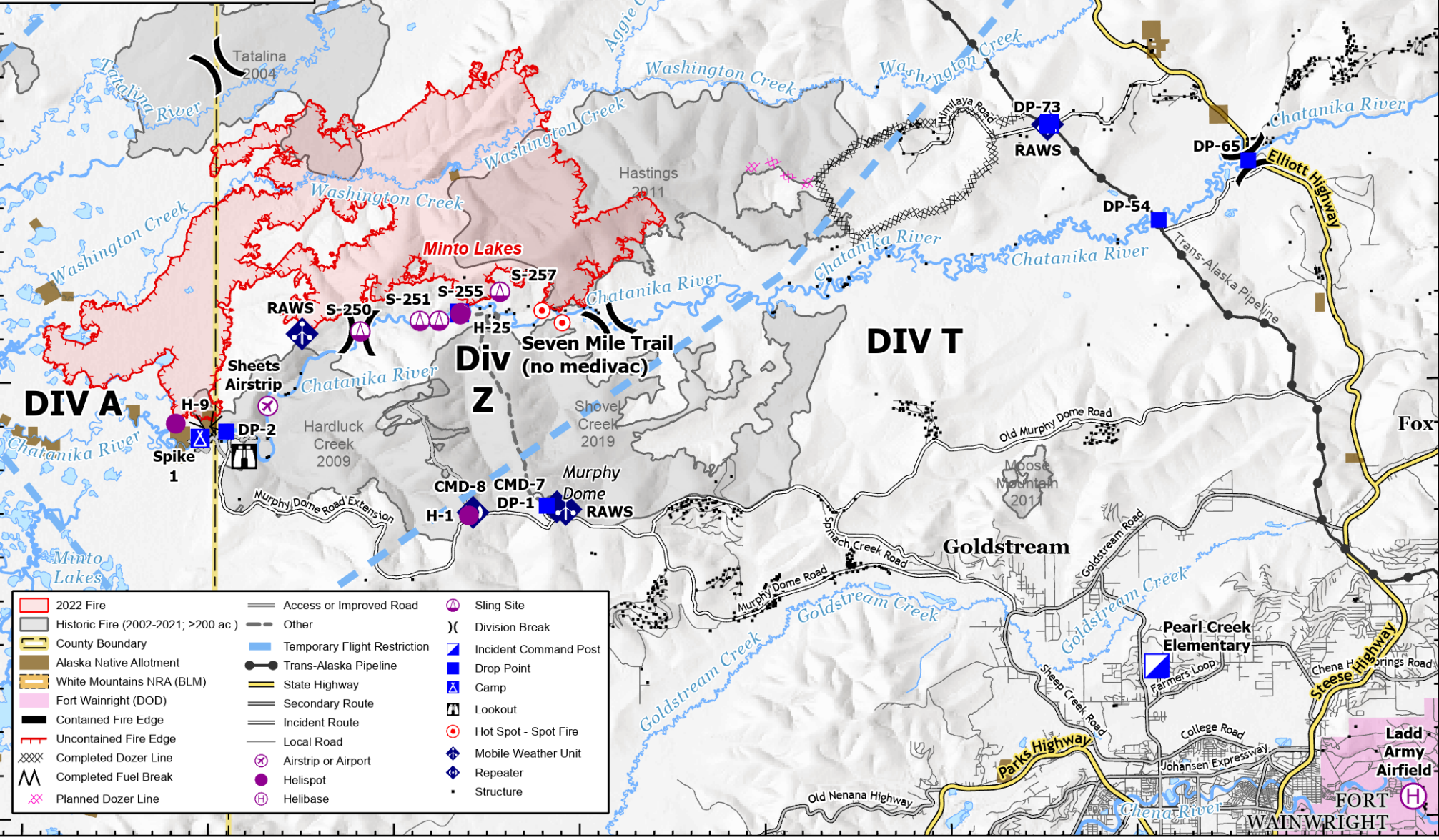
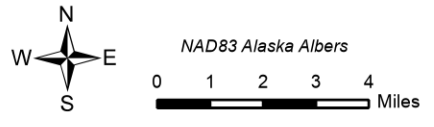
148°50'W 148°40'W 148°30'W 148°20'W 148°10'W 148°0'W 147°50'W 147°40'W



# Pilot Map

Minto Lakes  
AK-AFS-211349  
July 9, 2022

Approximate fire perimeter from satellite, infrared, and GPS as of 7/6/2022 @ 2345



	2022 Fire		Access or Improved Road		Sling Site
	Historic Fire (2002-2021; >200 ac.)		Other		Division Break
	County Boundary		Temporary Flight Restriction		Incident Command Post
	Alaska Native Allotment		Trans-Alaska Pipeline		Drop Point
	White Mountains NRA (BLM)		State Highway		Camp
	Fort Wainwright (DOD)		Secondary Route		Lookout
	Contained Fire Edge		Incident Route		Hot Spot - Spot Fire
	Uncontained Fire Edge		Local Road		Mobile Weather Unit
	Completed Dozer Line		Airstrip or Airport		Repeater
	Completed Fuel Break		Helispot		Structure
	Planned Dozer Line		Helibase		

148°50'W 148°40'W 148°30'W 148°20'W 148°10'W 148°0'W 147°50'W 147°40'W

65°10'N

65°0'N

65°10'N

65°0'N

64°50'N

FC Point Type	Label	Latitude WGS84 DDM	Longitude WGS84 DDM
Airstrip or Airport	Sheets Airstrip	64° 59.500' N	148° 36.842' W
Camp	Spike 1	64° 58.757' N	148° 40.500' W
Camp	Himilaya Spike	65° 05.917' N	147° 54.428' W
Camp	Zulu Spike	65° 01.638' N	148° 26.480' W
Drop Point	DP-2	64° 58.914' N	148° 39.085' W
Drop Point	DP-1	64° 57.225' N	148° 21.764' W
Drop Point	DP-73	65° 05.915' N	147° 54.562' W
Drop Point	DP-79	65° 10.313' N	148° 05.720' W
Drop Point	DP-65	65° 05.038' N	147° 43.671' W
Drop Point	DP-54	65° 03.685' N	147° 48.720' W
Hellbase	Ladd Army Airfield	64° 50.434' N	147° 35.149' W
Hellspot	H-1	64° 56.999' N	148° 25.967' W
Hellspot	H-25	65° 01.604' N	148° 26.435' W
Hellspot	H-9	64° 59.092' N	148° 41.817' W
Hot Spot - Spot Fire		65° 01.344' N	148° 21.003' W
Hot Spot - Spot Fire		65° 01.695' N	148° 22.007' W
Incident Command Post	Pearl Creek Elementary	64° 53.478' N	147° 48.884' W
Mobile Weather Unit	RAWS	65° 05.907' N	147° 54.544' W
Mobile Weather Unit	RAWS	65° 01.158' N	148° 35.000' W
Mobile Weather Unit	RAWS	64° 57.138' N	148° 20.734' W
Repeater	CMD-7	64° 57.197' N	148° 21.215' W
Repeater	CMD-8	64° 57.070' N	148° 25.743' W
Repeater	CMD-9	65° 10.300' N	148° 05.653' W
Safety Zone		64° 58.807' N	148° 40.000' W
Sling Site	S-255	65° 01.635' N	148° 26.410' W
Sling Site	S-250	65° 01.214' N	148° 31.845' W
Sling Site	S-251	65° 01.458' N	148° 28.622' W
Sling Site	S-253	65° 01.462' N	148° 27.582' W
Sling Site	S-257	65° 02.124' N	148° 24.286' W