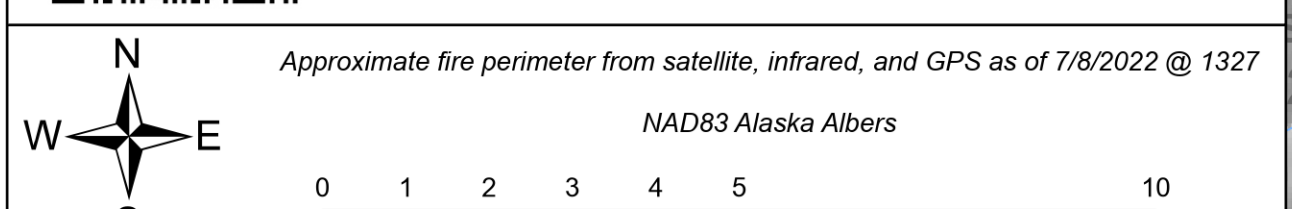




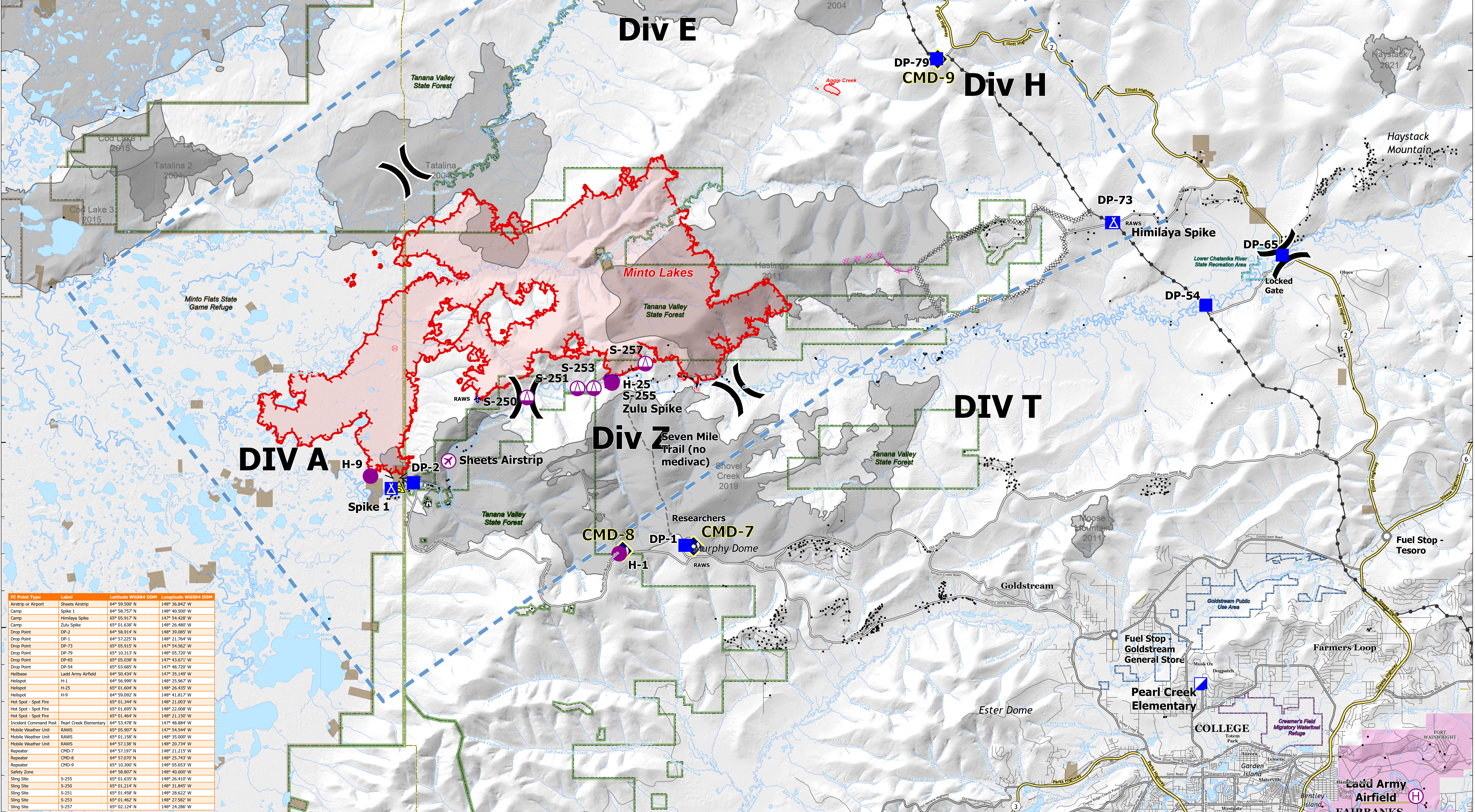
# Air Operations

## Minto Lakes AK-AFS-211349

July 10, 2022



2022 Fire (>10 ac)	Uncontained Fire Edge	Sling Site
Historic Fire (2002-2021; >200 ac.)	Completed Dozer Line	Incident Command Post
County Boundary	Completed Fuel Break	Drop Point
Alaska Native Allotment	Planned Dozer Line	Camp
White Mountains National Recreation Area	Access or Improved Road	Lookout
Tanana Valley State Forest	Other	Fire Origin
Fort Wainwright (DOD)	Temporary Flight Restriction	Other
Lower Chatanika River State Recreation Area	Trans-Alaska Pipeline	Gate
Tanana Valley State Game Refuge	State Highway	Mobile Weather Unit
Goldstream Public Use Area	Local Road	Repeater
Creamer's Field Migratory Waterfowl Refuge	Incident Route	Safety Zone
	Airstrip or Airport	Structure
	Helipad	Helibase



FC Point Type	Label	Latitude WGS84 DDM	Longitude WGS84 DDM
Airstrip or Airport	Sheets Airstrip	64° 59.500' N	148° 36.842' W
Camp	Spike 1	64° 58.757' N	148° 40.500' W
Camp	Himilaya Spike	65° 05.917' N	147° 54.428' W
Camp	DP-2	64° 58.914' N	148° 26.400' W
Drop Point	DP-1	64° 58.914' N	148° 39.085' W
Drop Point	DP-1	64° 57.225' N	148° 21.764' W
Drop Point	DP-73	65° 05.915' N	147° 54.562' W
Drop Point	DP-79	65° 10.313' N	148° 05.720' W
Drop Point	DP-65	65° 05.038' N	147° 45.671' W
Drop Point	DP-54	65° 03.385' N	147° 48.720' W
Helibase	Ladd Army Airfield	64° 50.434' N	147° 35.149' W
Helipad	H-1	64° 56.999' N	148° 25.967' W
Helipad	H-25	65° 01.604' N	148° 26.435' W
Helipad	H-9	64° 59.092' N	148° 41.817' W
Hot Spot - Spot Fire		65° 01.344' N	148° 21.003' W
Hot Spot - Spot Fire		65° 01.695' N	148° 22.008' W
Hot Spot - Spot Fire		65° 01.464' N	148° 21.150' W
Incident Command Post	Pearl Creek Elementary	64° 53.478' N	147° 48.884' W
Mobile Weather Unit	RAWS	65° 05.907' N	147° 54.544' W
Mobile Weather Unit	RAWS	65° 01.158' N	148° 35.000' W
Mobile Weather Unit	RAWS	64° 57.138' N	148° 20.734' W
Repeater	CMD-7	64° 57.137' N	148° 21.215' W
Repeater	CMD-8	64° 57.070' N	148° 25.743' W
Repeater	CMD-9	65° 10.300' N	148° 05.653' W
Safety Zone		64° 58.807' N	148° 40.000' W
Sling Site	S-255	65° 01.635' N	148° 26.410' W
Sling Site	S-250	65° 01.214' N	148° 31.845' W
Sling Site	S-251	65° 01.458' N	148° 28.622' W
Sling Site	S-253	65° 01.462' N	148° 27.582' W
Sling Site	S-257	65° 02.124' N	148° 24.286' W