



Air Operations

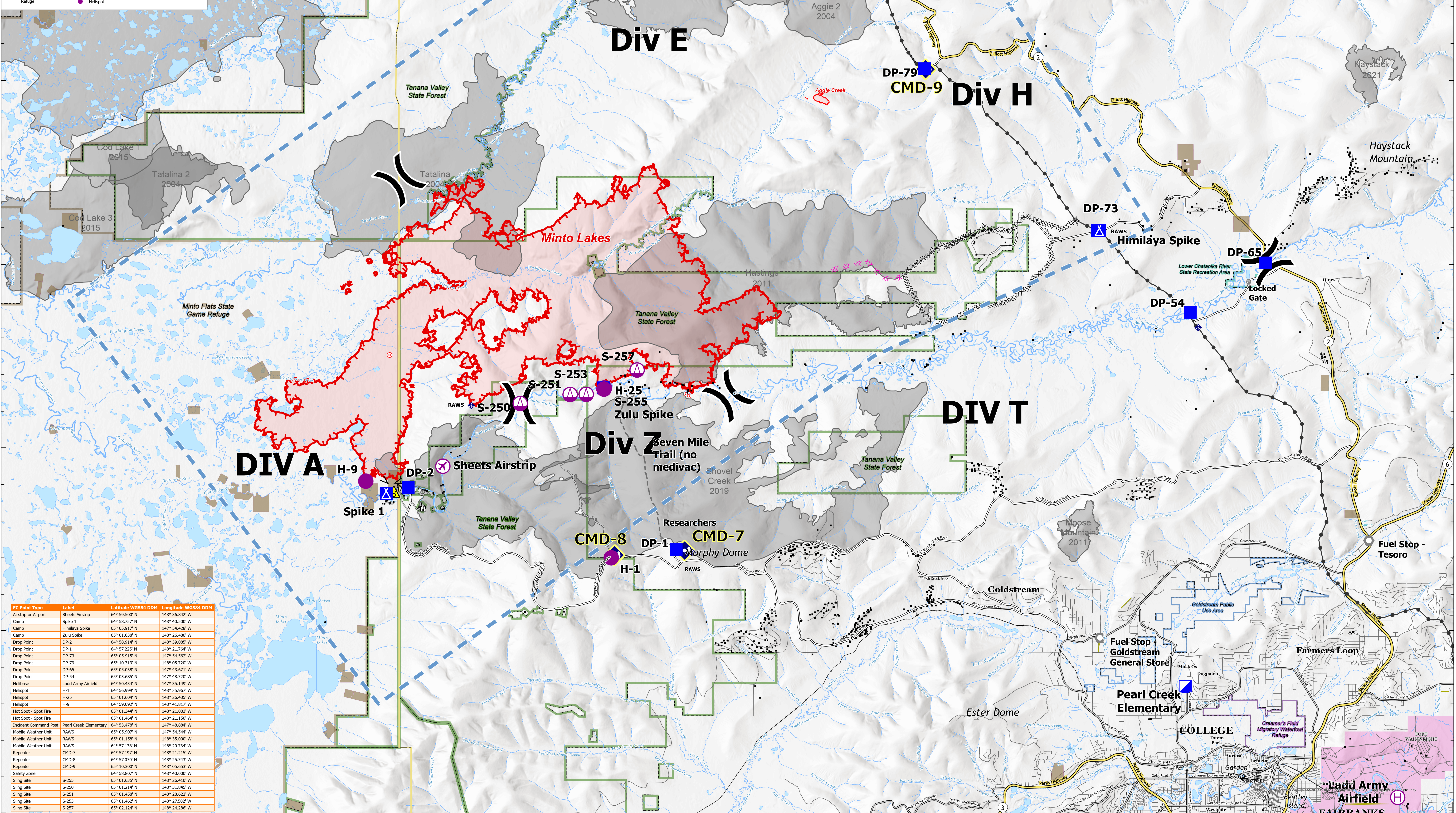
Minto Lakes AK-AFS-211349

July 12, 2022

Approximate fire perimeter from satellite, infrared, and GPS as of 7/9/2022 @ 2145

NAD83 Alaska Albers

2022 Fire (>10 ac)
 Historic Fire (2002-2021; >200 ac.)
 County Boundary
 Alaska Native Allotment
 White Mountains National Recreation Area
 Fort Wainwright (DOD)
 Lower Chatanika River State Recreation Area
 Tanana Valley State Forest
 Minto Flats State Game Refuge
 Goldstream Public Use Area
 Creamer's Field Migratory Waterfowl Refuge
 Contained Fire Edge
 Uncontained Fire Edge
 Completed Dozer Line
 Completed Fuel Break
 Incident Command Post
 Planned Dozer Line
 Access or Improved Road
 Other
 Temporary Flight Restriction
 Trans-Alaska Pipeline
 State Highway
 Secondary Route
 Incident Route
 Local Road
 Alaska Railroad
 Airstrip or Airport
 Helibase
 Sling Site
 Division Break
 Incident Command Post
 Drop Point
 Camp
 Lookout
 Hot Spot - Spot Fire
 Fire Origin
 Other
 Landmark
 Gate
 Mobile Weather Unit
 Repeater
 Safety Zone
 Structure



| FC Point Type | Label | Latitude WGS84 DDM | Longitude WGS84 DDM |
|-----------------------|------------------------|--------------------|---------------------|
| Airstrip or Airport | Sheets Airstrip | 64° 59.500' N | 148° 36.842' W |
| Camp | Spike 1 | 64° 58.757' N | 148° 40.500' W |
| Camp | Himilaya Spike | 65° 05.917' N | 147° 54.628' W |
| Camp | Zulu Spike | 65° 01.638' N | 148° 26.480' W |
| Drop Point | DP-2 | 64° 58.914' N | 148° 39.085' W |
| Drop Point | DP-1 | 64° 57.225' N | 148° 21.764' W |
| Drop Point | DP-73 | 65° 05.915' N | 147° 54.562' W |
| Drop Point | DP-79 | 65° 10.313' N | 148° 05.720' W |
| Drop Point | DP-45 | 65° 05.038' N | 147° 43.671' W |
| Drop Point | DP-54 | 65° 03.685' N | 147° 48.720' W |
| Helibase | Ladd Army Airfield | 64° 50.434' N | 147° 35.149' W |
| Helispot | H-1 | 64° 56.999' N | 148° 25.967' W |
| Helispot | H-25 | 65° 01.604' N | 148° 26.415' W |
| Helispot | H-9 | 64° 59.092' N | 148° 41.817' W |
| Hot Spot - Spot Fire | | 65° 01.344' N | 148° 21.003' W |
| Hot Spot - Spot Fire | | 65° 01.464' N | 148° 21.150' W |
| Incident Command Post | Pearl Creek Elementary | 64° 53.478' N | 147° 48.884' W |
| Mobile Weather Unit | RAWS | 65° 05.907' N | 147° 54.544' W |
| Mobile Weather Unit | RAWS | 65° 01.158' N | 148° 35.000' W |
| Mobile Weather Unit | RAWS | 64° 57.138' N | 148° 20.734' W |
| Repeater | CMD-7 | 64° 57.070' N | 148° 21.218' W |
| Repeater | CMD-8 | 64° 57.070' N | 148° 25.743' W |
| Repeater | CMD-9 | 65° 10.300' N | 148° 05.653' W |
| Safety Zone | | 64° 58.807' N | 148° 40.000' W |
| Sling Site | S-255 | 65° 01.635' N | 148° 26.410' W |
| Sling Site | S-250 | 65° 01.214' N | 148° 31.845' W |
| Sling Site | S-251 | 65° 01.498' N | 148° 26.629' W |
| Sling Site | S-253 | 65° 01.462' N | 148° 27.582' W |
| Sling Site | S-257 | 65° 02.124' N | 148° 24.288' W |