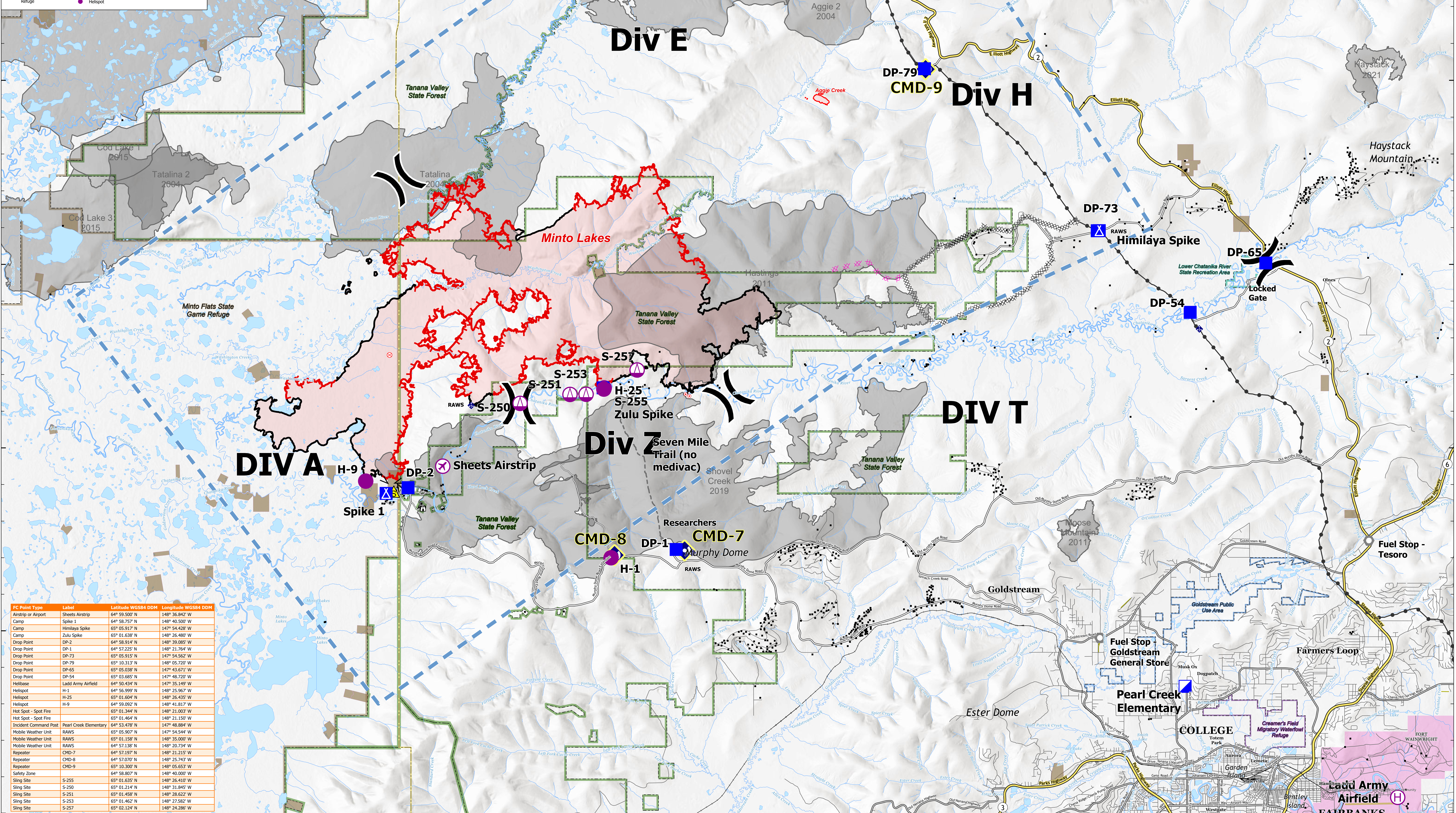


Approximate fire perimeter from satellite, infrared, and GPS as of 7/11/2022 @ 2245
 NAD83 Alaska Albers

2022 Fire (>10 ac)
 Historic Fire (2002-2021; >200 ac.)
 County Boundary
 Alaska Native Allotment
 White Mountains National Recreation Area
 Fort Wainwright (DOD)
 Lower Chatanika River State Recreation Area
 Tanana Valley State Forest
 Minto Flats State Game Refuge
 Goldstream Public Use Area
 Creamer's Field Migratory Waterfowl Refuge
 Contained Fire Edge
 Uncontained Fire Edge
 Completed Dozer Line
 Completed Fuel Break
 Planned Dozer Line
 Access or Improved Road
 Other
 Temporary Flight Restriction
 Trans-Alaska Pipeline
 State Highway
 Secondary Route
 Incident Route
 Local Road
 Alaska Railroad
 Helibase
 Sling Site
 Division Break
 Incident Command Post
 Drop Point
 Camp
 Lookout
 Hot Spot - Spot Fire
 Fire Origin
 Other
 Landmark
 Gate
 Mobile Weather Unit
 Repeater
 Safety Zone
 Structure



FC Point Type	Label	Latitude WGS84 DDM	Longitude WGS84 DDM
Airstrip or Airport	Sheets Airstrip	64° 59.500' N	148° 36.842' W
Camp	Spike 1	64° 58.757' N	148° 40.500' W
Camp	Himilaya Spike	65° 05.317' N	147° 54.428' W
Camp	Zulu Spike	65° 01.638' N	148° 26.480' W
Drop Point	DP-2	64° 58.914' N	148° 39.085' W
Drop Point	DP-1	64° 57.225' N	148° 21.764' W
Drop Point	DP-73	65° 05.915' N	147° 54.562' W
Drop Point	DP-79	65° 10.313' N	148° 05.720' W
Drop Point	DP-45	65° 05.036' N	147° 43.571' W
Drop Point	DP-54	65° 03.685' N	147° 48.720' W
Helibase	Ladd Army Airfield	64° 50.434' N	147° 35.149' W
Helispot	H-1	64° 56.999' N	148° 25.967' W
Helispot	H-25	65° 01.604' N	148° 26.415' W
Helispot	H-9	64° 59.092' N	148° 41.817' W
Hot Spot - Spot Fire		65° 01.344' N	148° 21.003' W
Hot Spot - Spot Fire		65° 01.464' N	148° 21.150' W
Incident Command Post	Pearl Creek Elementary	64° 53.478' N	147° 48.884' W
Mobile Weather Unit	RAWS	65° 05.907' N	147° 54.544' W
Mobile Weather Unit	RAWS	65° 01.158' N	148° 35.000' W
Mobile Weather Unit	RAWS	64° 57.138' N	148° 20.734' W
Repeater	CMD-7	64° 57.070' N	148° 21.218' W
Repeater	CMD-8	64° 57.070' N	148° 25.743' W
Repeater	CMD-9	65° 10.300' N	148° 05.653' W
Safety Zone		64° 58.807' N	148° 40.000' W
Sling Site	S-255	65° 01.635' N	148° 26.410' W
Sling Site	S-250	65° 01.214' N	148° 31.845' W
Sling Site	S-251	65° 01.498' N	148° 26.628' W
Sling Site	S-253	65° 01.462' N	148° 27.582' W
Sling Site	S-257	65° 02.124' N	148° 24.286' W