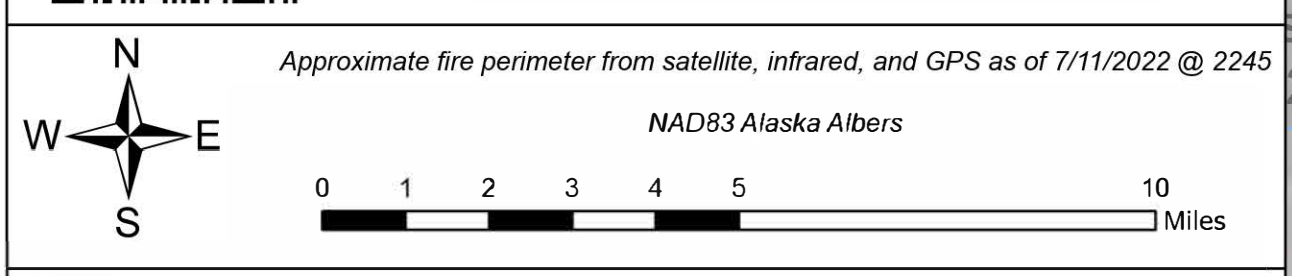




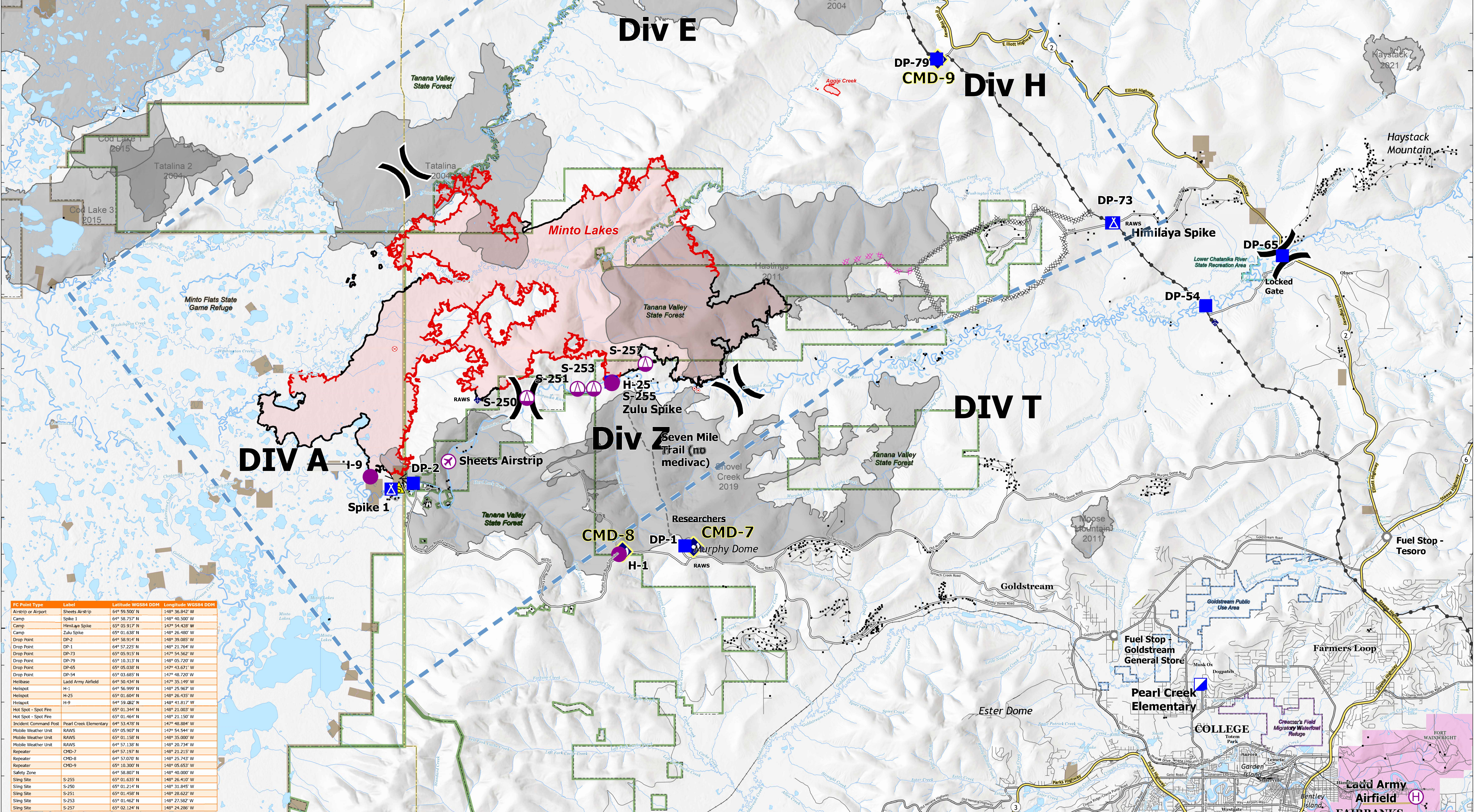
# Air Operations

## Minto Lakes AK-AFS-211349

July 14, 2022



- 2022 Fire (>10 ac)
- Historic Fire (2002-2021; >200 ac.)
- County Boundary
- Alaska Native Allotment
- White Mountains National Recreation Area
- Tanana Valley State Forest
- Minto Flats State Game Refuge
- Lower Chatanika River State Recreation Area
- Tanana Valley State Game Refuge
- Goldstream Public Use Area
- Creamer's Field Migratory Waterfowl Refuge
- Contained Fire Edge
- Uncontained Fire Edge
- Completed Dozer Line
- Completed Fuel Break
- Planned Dozer Line
- Access or Improved Road
- Other
- Temporary Flight Restriction
- Trans-Alaska Pipeline
- State Highway
- Secondary Route
- Incident Route
- Local Road
- Alaska Railroad
- Helibase
- Sling Site
- Division Break
- Incident Command Post
- Drop Point
- Camp
- Lookout
- Hot Spot - Spot Fire
- Fire Origin
- Other
- Landmark
- Gate
- Mobile Weather Unit
- Repeater
- Safety Zone
- Structure



| FC Point Type         | Label                  | Latitude WGS84 DDM | Longitude WGS84 DDM |
|-----------------------|------------------------|--------------------|---------------------|
| Airstrip or Airport   | Sheets Airstrip        | 64° 59.500' N      | 148° 36.842' W      |
| Camp                  | Spike 1                | 64° 58.757' N      | 148° 40.500' W      |
| Camp                  | Himalaya Spike         | 65° 05.917' N      | 147° 54.428' W      |
| Camp                  | Zulu Spike             | 65° 01.638' N      | 148° 26.480' W      |
| Drop Point            | DP-2                   | 64° 58.914' N      | 148° 39.085' W      |
| Drop Point            | DP-1                   | 64° 57.225' N      | 148° 21.764' W      |
| Drop Point            | DP-3                   | 65° 05.915' N      | 147° 54.562' W      |
| Drop Point            | DP-79                  | 65° 10.313' N      | 148° 05.720' W      |
| Drop Point            | DP-65                  | 65° 05.038' N      | 147° 43.671' W      |
| Drop Point            | DP-54                  | 65° 03.685' N      | 147° 48.720' W      |
| Helibase              | Ladd Army Airfield     | 64° 50.434' N      | 147° 35.149' W      |
| Helipoint             | H-1                    | 64° 56.999' N      | 148° 25.967' W      |
| Helipoint             | H-25                   | 65° 01.604' N      | 148° 26.435' W      |
| Helipoint             | H-9                    | 64° 59.082' N      | 148° 41.817' W      |
| Hot Spot - Spot Fire  |                        | 65° 01.344' N      | 148° 21.215' W      |
| Hot Spot - Spot Fire  |                        | 65° 01.464' N      | 148° 21.150' W      |
| Incident Command Post | Pearl Creek Elementary | 64° 53.478' N      | 147° 48.884' W      |
| Mobile Weather Unit   | RAWS                   | 65° 05.907' N      | 147° 54.544' W      |
| Mobile Weather Unit   | RAWS                   | 65° 01.158' N      | 148° 35.000' W      |
| Mobile Weather Unit   | RAWS                   | 64° 57.138' N      | 148° 20.734' W      |
| Repeater              | CMD-7                  | 64° 57.137' N      | 148° 21.215' W      |
| Repeater              | CMD-8                  | 64° 57.070' N      | 148° 25.743' W      |
| Repeater              | CMD-9                  | 65° 10.300' N      | 148° 05.653' W      |
| Safety Zone           |                        | 64° 58.807' N      | 148° 40.000' W      |
| Sling Site            | S-255                  | 65° 01.635' N      | 148° 26.410' W      |
| Sling Site            | S-250                  | 65° 01.214' N      | 148° 31.845' W      |
| Sling Site            | S-251                  | 65° 01.638' N      | 148° 26.480' W      |
| Sling Site            | S-253                  | 65° 01.462' N      | 148° 21.982' W      |
| Sling Site            | S-257                  | 65° 02.124' N      | 148° 24.286' W      |