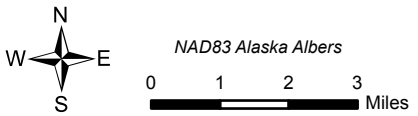




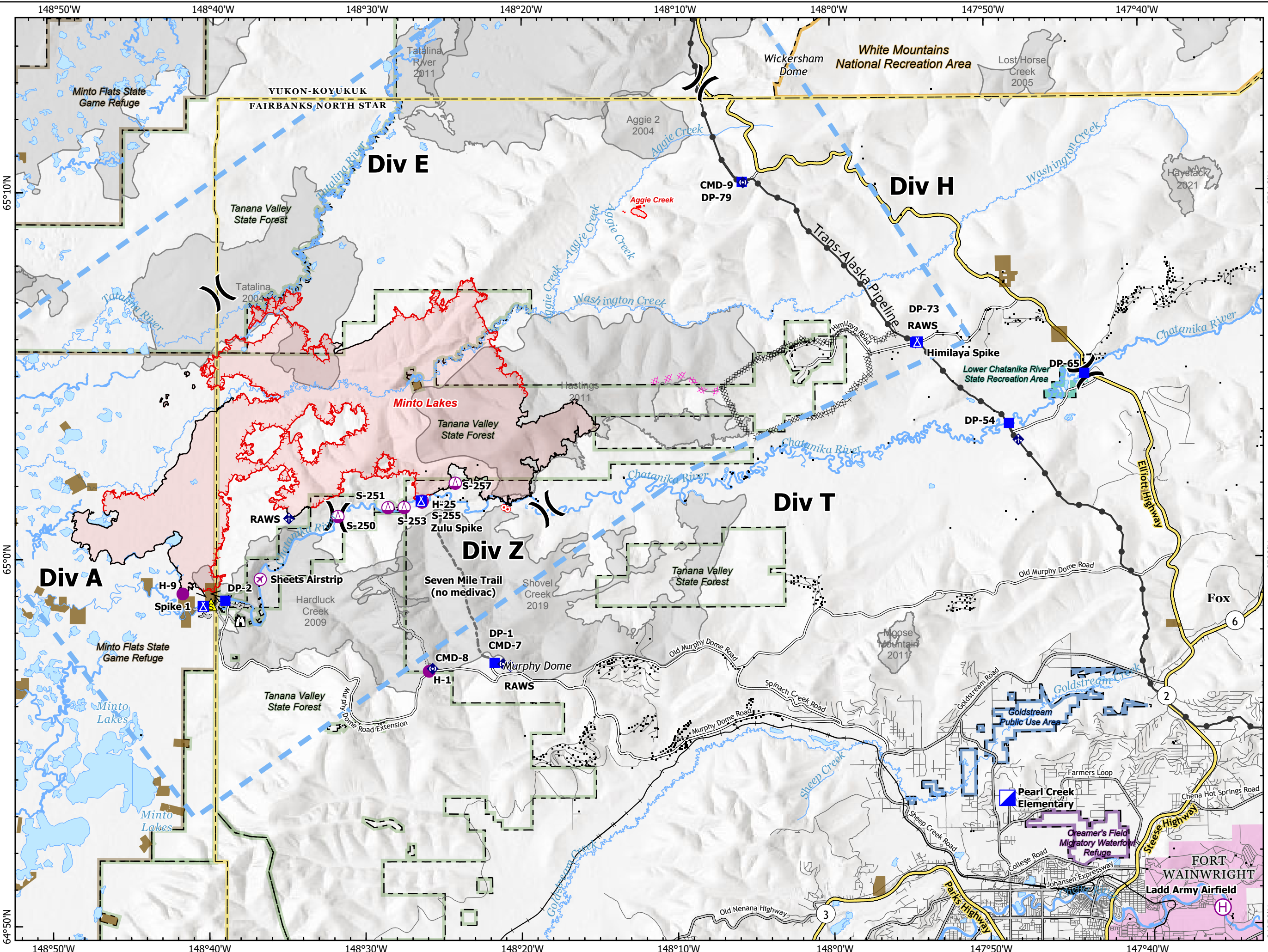
Pilot Map

Minto Lakes
AK-AFS-211349
July 14, 2022

Approximate fire perimeter from satellite, infrared, and GPS as of 7/11/2022 @ 2245



- 2022 Fire
- Historic Fire (2002-2021; >200 ac.)
- County Boundary
- Alaska Native Allotment
- White Mountains National Recreation Area
- Fort Wainwright (DOD)
- Lower Chatanika River State Recreation Area
- Tanana Valley State Forest
- Minto Flats State Game Refuge
- Goldstream Public Use Area
- Creamer's Field Migratory Waterfowl Refuge
- Contained Fire Edge
- Uncontained Fire Edge
- Completed Dozer Line
- Completed Fuel Break
- Planned Dozer Line
- Access or Improved Road
- Other
- Temporary Flight Restriction
- Trans-Alaska Pipeline
- State Highway
- Secondary Route
- Incident Route
- Local Road
- Alaska Railroad
- Division Break
- Incident Command Post
- Drop Point
- ▲ Camp
- ⊗ Airstrip or Airport
- Helispot
- ⊕ Helibase
- ⊕ Sling Site
- ⊕ Mobile Weather Unit
- ⊕ Repeater
- ⊕ Lookout
- Hot Spot - Spot Fire
- ▲ Safety Zone
- Structure



| FC Point Type | Label | Latitude WGS84 DDM | Longitude WGS84 DDM |
|-----------------------|------------------------|--------------------|---------------------|
| Airstrip or Airport | Sheets Airstrip | 64° 59.500' N | 148° 36.842' W |
| Camp | Spike 1 | 64° 58.757' N | 148° 40.500' W |
| Camp | Himilaya Spike | 65° 05.917' N | 147° 54.428' W |
| Camp | Zulu Spike | 65° 01.638' N | 148° 26.480' W |
| Drop Point | DP-2 | 64° 58.914' N | 148° 39.085' W |
| Drop Point | DP-1 | 64° 57.225' N | 148° 21.764' W |
| Drop Point | DP-73 | 65° 05.915' N | 147° 54.562' W |
| Drop Point | DP-79 | 65° 10.313' N | 148° 05.720' W |
| Drop Point | DP-65 | 65° 05.038' N | 147° 43.671' W |
| Drop Point | DP-54 | 65° 03.685' N | 147° 48.720' W |
| Helibase | Ladd Army Airfield | 64° 50.434' N | 147° 35.149' W |
| Helispot | H-1 | 64° 56.999' N | 148° 25.967' W |
| Helispot | H-25 | 65° 01.604' N | 148° 26.435' W |
| Helispot | H-9 | 64° 59.092' N | 148° 41.817' W |
| Hot Spot - Spot Fire | | 65° 01.344' N | 148° 21.003' W |
| Hot Spot - Spot Fire | | 65° 01.464' N | 148° 21.150' W |
| Incident Command Post | Pearl Creek Elementary | 64° 53.478' N | 147° 48.884' W |
| Mobile Weather Unit | RAWS | 65° 05.907' N | 147° 54.544' W |
| Mobile Weather Unit | RAWS | 65° 01.158' N | 148° 35.000' W |
| Mobile Weather Unit | RAWS | 64° 57.138' N | 148° 20.734' W |
| Repeater | CMD-7 | 64° 57.197' N | 148° 21.215' W |
| Repeater | CMD-8 | 64° 57.070' N | 148° 25.743' W |
| Repeater | CMD-9 | 65° 10.300' N | 148° 05.653' W |
| Safety Zone | | 64° 58.807' N | 148° 40.000' W |
| Sling Site | S-255 | 65° 01.635' N | 148° 26.410' W |
| Sling Site | S-250 | 65° 01.214' N | 148° 31.845' W |
| Sling Site | S-251 | 65° 01.458' N | 148° 28.622' W |
| Sling Site | S-253 | 65° 01.462' N | 148° 27.582' W |
| Sling Site | S-257 | 65° 02.124' N | 148° 24.286' W |