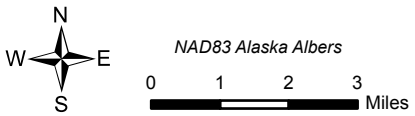




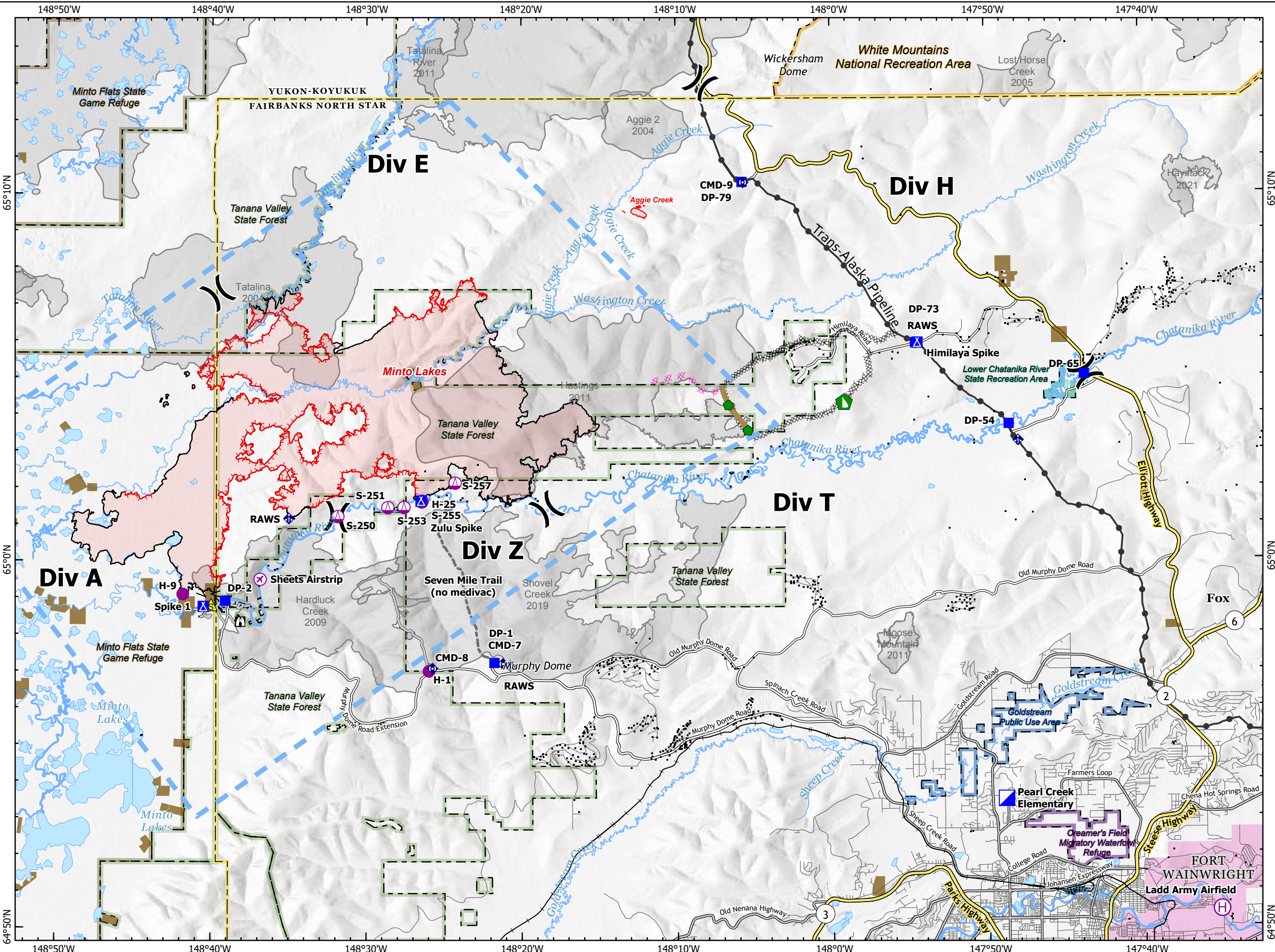
Pilot Map

Minto Lakes
AK-AFS-211349
July 17, 2022

Approximate fire perimeter from satellite, infrared, and GPS as of 7/13/2022 @ 2130



- 2022 Fire
- Historic Fire (2002-2021; >200 ac.)
- County Boundary
- Alaska Native Allotment
- White Mountains National Recreation Area
- Fort Wainwright (DOD)
- Lower Chatanika River State Recreation Area
- Tanana Valley State Forest
- Minto Flats State Game Refuge
- Goldstream Public Use Area
- Creamer's Field Migratory Waterfowl Refuge
- Contained Fire Edge
- Uncontained Fire Edge
- Completed Dozer Line
- Completed Fuel Break
- Planned Dozer Line
- Access or Improved Road
- Other
- Repair Line
- Temporary Flight Restriction
- Trans-Alaska Pipeline
- State Highway
- Secondary Route
- Incident Route
- Local Road
- Alaska Railroad
- Division Break
- Incident Command Post
- Drop Point
- Camp
- Airstrip or Airport
- Helispot
- Helibase
- Sling Site
- Mobile Weather Unit
- Repeater
- Lookout
- Repair Point
- Dozer Push
- Safety Zone
- Structure



FC Point Type	Label	Latitude WGS84 DDM	Longitude WGS84 DDM
Airstrip or Airport	Sheets Airstrip	64° 59.500' N	148° 36.842' W
Camp	Spike 1	64° 58.757' N	148° 40.500' W
Camp	Himilaya Spike	65° 05.917' N	147° 54.428' W
Camp	Zulu Spike	65° 01.638' N	148° 26.480' W
Drop Point	DP-2	64° 58.914' N	148° 39.085' W
Drop Point	DP-1	64° 57.225' N	148° 21.764' W
Drop Point	DP-73	65° 05.915' N	147° 54.562' W
Drop Point	DP-79	65° 10.313' N	148° 05.720' W
Drop Point	DP-65	65° 05.038' N	147° 43.671' W
Drop Point	DP-54	65° 03.685' N	147° 48.720' W
Helibase	Ladd Army Airfield	64° 50.434' N	147° 35.149' W
Helispot	H-1	64° 56.999' N	148° 25.967' W
Helispot	H-25	65° 01.604' N	148° 26.435' W
Helispot	H-9	64° 59.092' N	148° 41.817' W
Incident Command Post	Pearl Creek Elementary	64° 53.478' N	147° 48.884' W
Mobile Weather Unit	RAWS	65° 05.907' N	147° 54.544' W
Mobile Weather Unit	RAWS	65° 01.158' N	148° 35.000' W
Mobile Weather Unit	RAWS	64° 57.138' N	148° 20.734' W
Mobile Weather Unit		65° 03.242' N	147° 47.963' W
Repeater	CMD-7	64° 57.197' N	148° 21.215' W
Repeater	CMD-8	64° 57.070' N	148° 25.743' W
Repeater	CMD-9	65° 10.300' N	148° 05.653' W
Safety Zone		64° 58.807' N	148° 40.000' W
Sling Site	S-255	65° 01.635' N	148° 26.410' W
Sling Site	S-250	65° 01.214' N	148° 31.845' W
Sling Site	S-251	65° 01.458' N	148° 28.622' W
Sling Site	S-253	65° 01.462' N	148° 27.582' W
Sling Site	S-257	65° 02.124' N	148° 24.286' W