



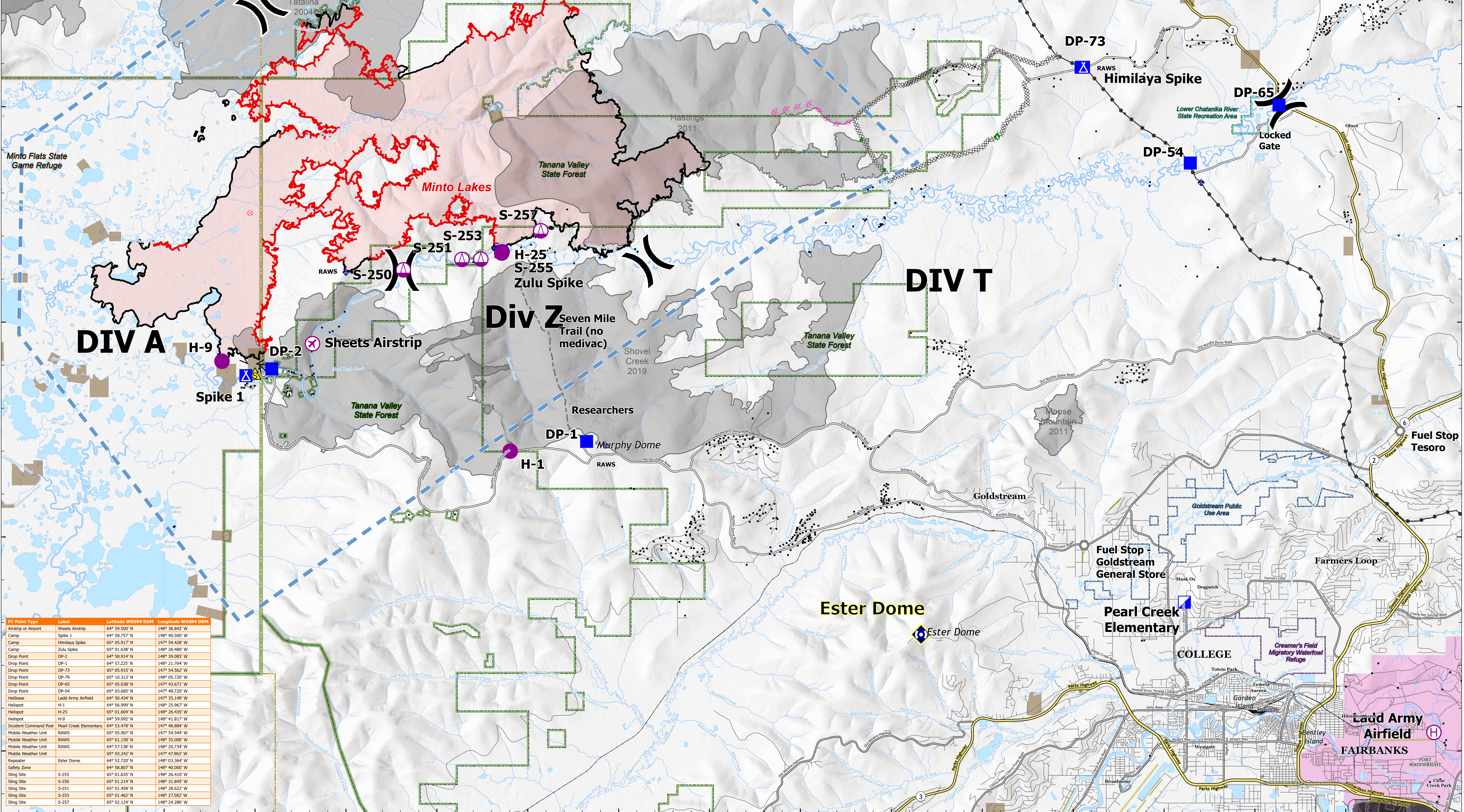
# Air Operations

## Minto Lakes AK-AFS-211349

July 18, 2022

Approximate fire perimeter from satellite, infrared, and GPS as of 7/13/2022 @ 2130  
NAD83 Alaska Albers

- 2022 Fire (>10 ac)
- - - Uncontained Fire Edge
- - - Historic Fire (2002-2021; >200 ac.)
- - - Completed Dozer Line
- - - Completed Fuel Break
- - - Planned Dozer Line
- - - Access or Improved Road
- - - Other
- - - Temporary Flight Restriction
- - - Trans-Alaska Pipeline
- - - State Highway
- - - Secondary Route
- - - Incident Route
- - - Local Road
- - - Alaska Railroad
- - - Airstrip or Airport
- - - Heliport
- - - Helibase
- - - Sling Site
- - - Division Break
- - - Incident Command Post
- - - Drop Point
- - - Camp
- - - Lookout
- - - Fire Origin
- - - Other
- - - Landmark
- - - Gate
- - - Repair Point
- - - Dozer Push
- - - Mobile Weather Unit
- - - Repeater
- - - Safety Zone
- - - Structure



FC Point Type	Label	Latitude WGS84 DDM	Longitude WGS84 DDM
Airstrip or Airport	Sheets Airstrip	64° 58.500' N	148° 36.842' W
Camp	Spike 1	64° 58.757' N	148° 40.500' W
Camp	Himalaya Spike	65° 05.917' N	147° 54.428' W
Camp	Zulu Spike	65° 01.638' N	148° 26.480' W
Drop Point	DP-2	64° 58.914' N	148° 39.085' W
Drop Point	DP-1	64° 57.225' N	148° 21.764' W
Drop Point	DP-73	65° 05.915' N	147° 54.562' W
Drop Point	DP-79	65° 10.313' N	148° 05.720' W
Drop Point	DP-65	65° 05.038' N	147° 43.671' W
Drop Point	DP-54	65° 03.685' N	147° 48.720' W
Helibase	Ladd Army Airfield	64° 50.434' N	147° 35.149' W
Helispot	H-1	64° 56.999' N	148° 25.567' W
Helispot	H-25	65° 01.604' N	148° 26.425' W
Helispot	H-9	64° 59.092' N	148° 41.817' W
Incident Command Post	Pearl Creek Elementary	64° 53.478' N	147° 48.884' W
Mobile Weather Unit	RAWS	65° 05.907' N	147° 54.544' W
Mobile Weather Unit	RAWS	65° 01.158' N	148° 35.000' W
Mobile Weather Unit	RAWS	64° 57.138' N	148° 20.734' W
Mobile Weather Unit	RAWS	65° 03.242' N	147° 47.963' W
Repeater	Ester Dome	64° 52.720' N	148° 03.364' W
Safety Zone		64° 58.807' N	148° 40.000' W
Sling Site	S-255	65° 01.635' N	148° 26.410' W
Sling Site	S-250	65° 01.214' N	148° 31.845' W
Sling Site	S-251	65° 01.458' N	148° 29.622' W
Sling Site	S-253	65° 01.462' N	148° 27.982' W
Sling Site	S-257	65° 02.124' N	148° 24.286' W