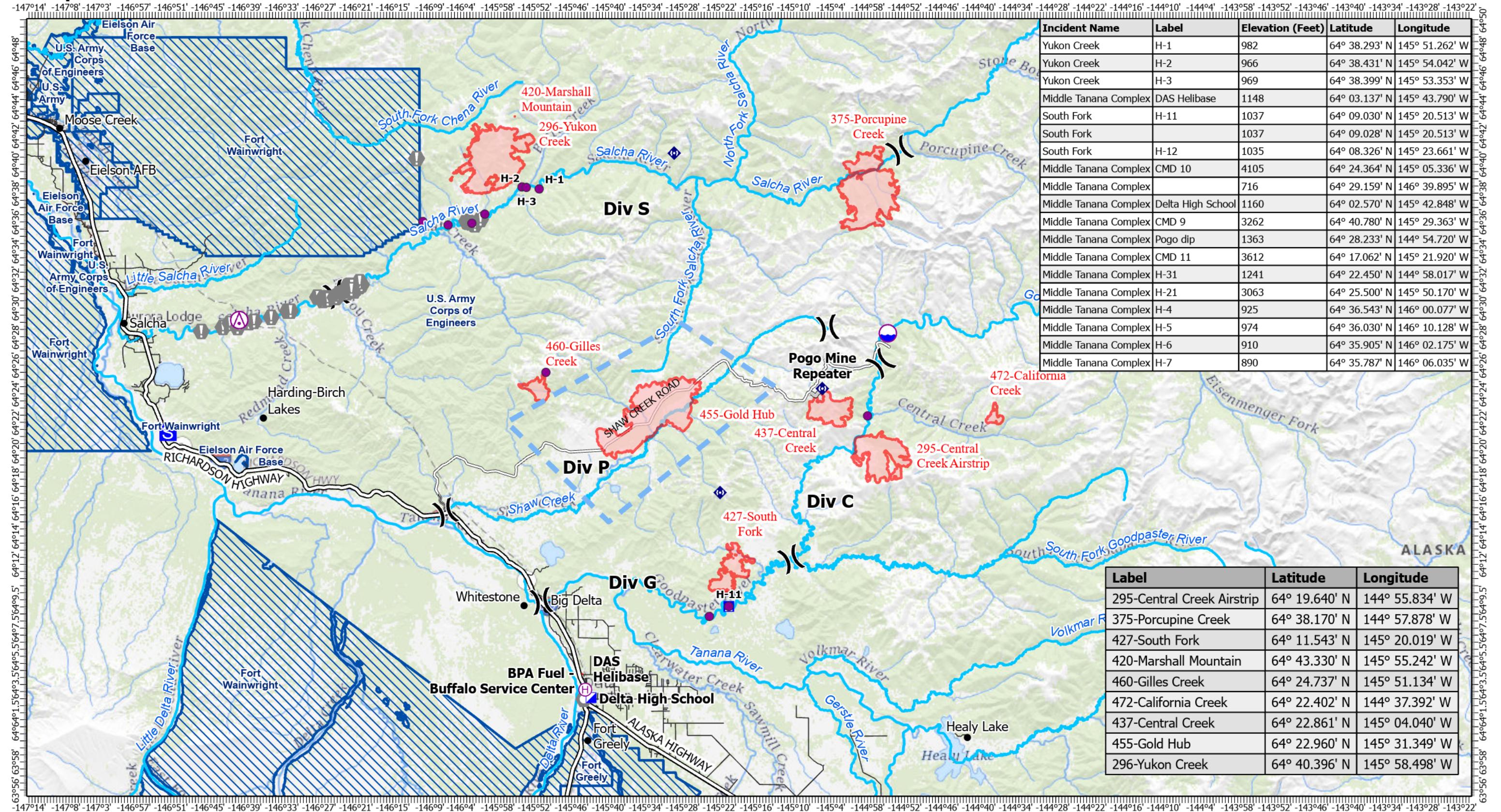


# Air Operations - Pilot

7/13/2022



Incident Name	Label	Elevation (Feet)	Latitude	Longitude
Yukon Creek	H-1	982	64° 38.293' N	145° 51.262' W
Yukon Creek	H-2	966	64° 38.431' N	145° 54.042' W
Yukon Creek	H-3	969	64° 38.399' N	145° 53.353' W
Middle Tanana Complex	DAS Helibase	1148	64° 03.137' N	145° 43.790' W
South Fork	H-11	1037	64° 09.030' N	145° 20.513' W
South Fork		1037	64° 09.028' N	145° 20.513' W
South Fork	H-12	1035	64° 08.326' N	145° 23.661' W
Middle Tanana Complex	CMD 10	4105	64° 24.364' N	145° 05.336' W
Middle Tanana Complex		716	64° 29.159' N	146° 39.895' W
Middle Tanana Complex	Delta High School	1160	64° 02.570' N	145° 42.848' W
Middle Tanana Complex	CMD 9	3262	64° 40.780' N	145° 29.363' W
Middle Tanana Complex	Pogo dip	1363	64° 28.233' N	144° 54.720' W
Middle Tanana Complex	CMD 11	3612	64° 17.062' N	145° 21.920' W
Middle Tanana Complex	H-31	1241	64° 22.450' N	144° 58.017' W
Middle Tanana Complex	H-21	3063	64° 25.500' N	145° 50.170' W
Middle Tanana Complex	H-4	925	64° 36.543' N	146° 00.077' W
Middle Tanana Complex	H-5	974	64° 36.030' N	146° 10.128' W
Middle Tanana Complex	H-6	910	64° 35.905' N	146° 02.175' W
Middle Tanana Complex	H-7	890	64° 35.787' N	146° 06.035' W

Label	Latitude	Longitude
295-Central Creek Airstrip	64° 19.640' N	144° 55.834' W
375-Porcupine Creek	64° 38.170' N	144° 57.878' W
427-South Fork	64° 11.543' N	145° 20.019' W
420-Marshall Mountain	64° 43.330' N	145° 55.242' W
460-Gilles Creek	64° 24.737' N	145° 51.134' W
472-California Creek	64° 22.402' N	144° 37.392' W
437-Central Creek	64° 22.861' N	145° 04.040' W
455-Gold Hub	64° 22.960' N	145° 31.349' W
296-Yukon Creek	64° 40.396' N	145° 58.498' W

Fire Perimeter as of  
hrs  
Acres

Aerial Hazard	Helibase	Camp	Landmark	Temporary Flight Restriction
Dip Site	Division Break	Staging Area	Repeater	Wildfire Daily Fire Perimeter
Helispot	Incident Command Post	Value at Risk	Access or Improved Road	DOD Surface Management

0 5 10 Miles