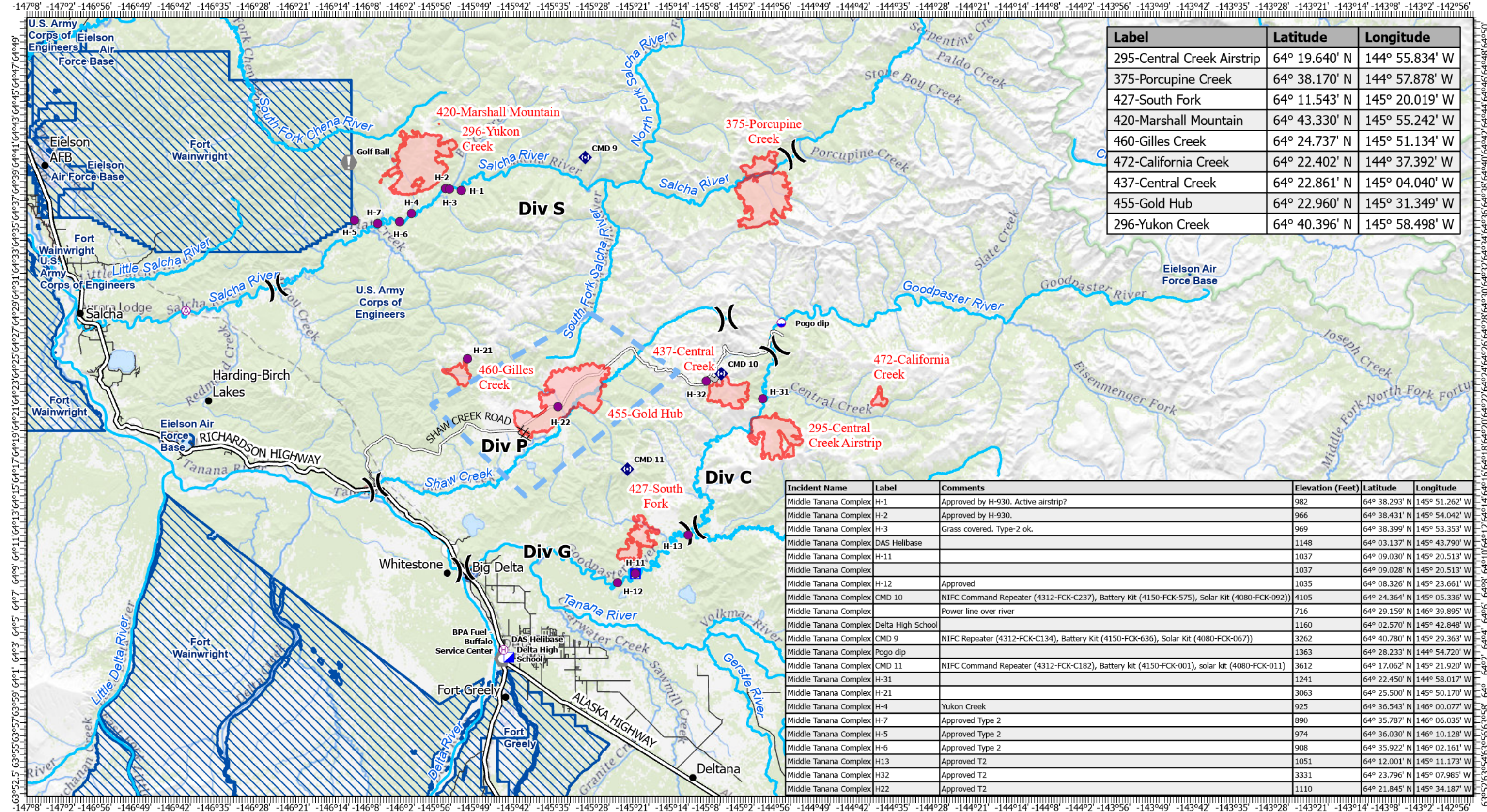


Air Operations - Pilot

7/15/2022



Label	Latitude	Longitude
295-Central Creek Airstrip	64° 19.640' N	144° 55.834' W
375-Porcupine Creek	64° 38.170' N	144° 57.878' W
427-South Fork	64° 11.543' N	145° 20.019' W
420-Marshall Mountain	64° 43.330' N	145° 55.242' W
460-Gilles Creek	64° 24.737' N	145° 51.134' W
472-California Creek	64° 22.402' N	144° 37.392' W
437-Central Creek	64° 22.861' N	145° 04.040' W
455-Gold Hub	64° 22.960' N	145° 31.349' W
296-Yukon Creek	64° 40.396' N	145° 58.498' W

Fire Perimeter as of
hrs
Acres

Aerial Hazard	Helibase	Camp	Repeater	Temporary Flight Restriction
Dip Site	Division Break	Value at Risk	Completed Dozer Line	Wildfire Daily Fire Perimeter
Helispot	Incident Command Post	Landmark	Access or Improved Road	DOD Surface Management

0 5 10 Miles

