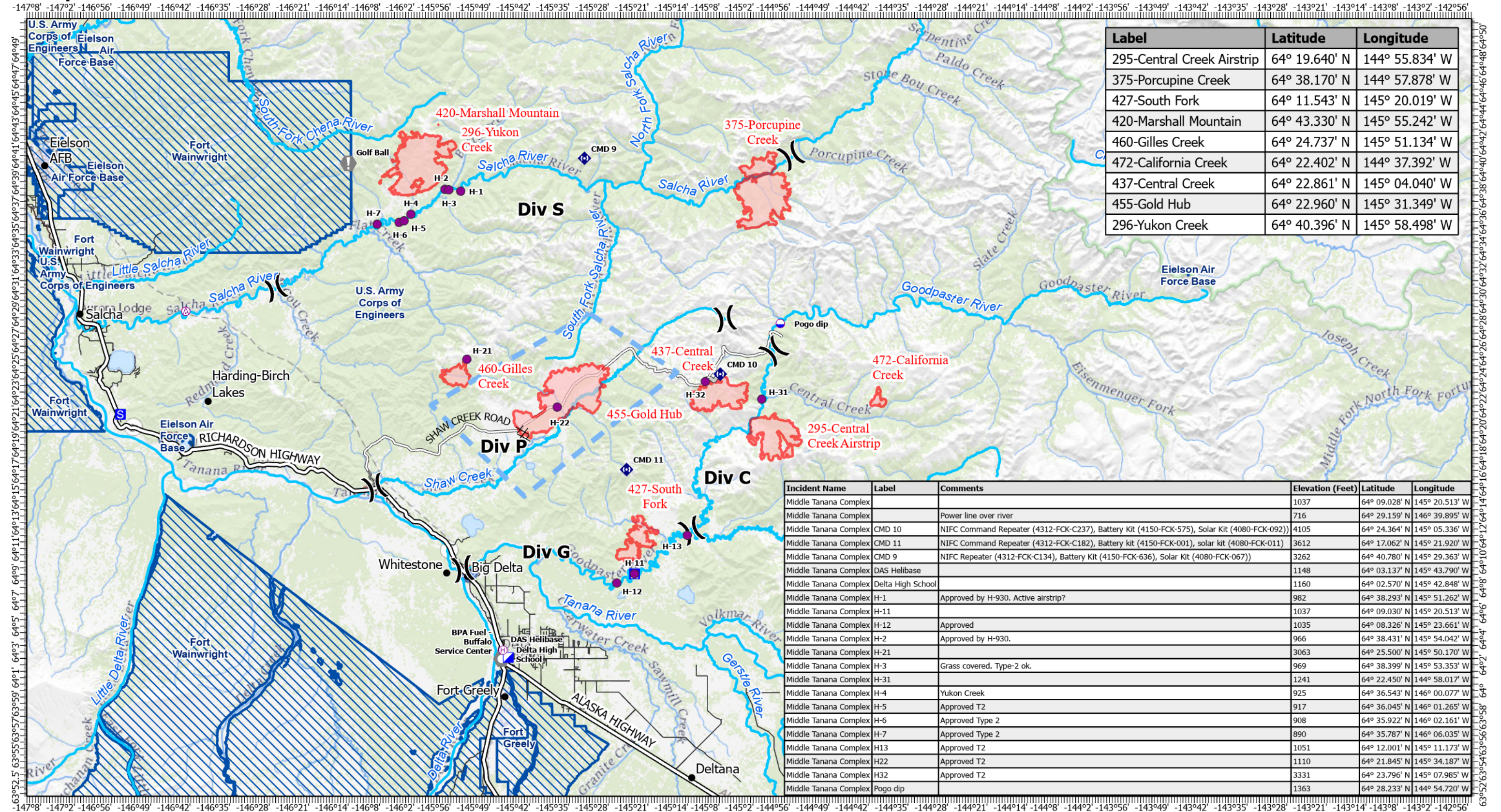


Air Operations - Pilot

7/17/2022



Label	Latitude	Longitude
295-Central Creek Airstrip	64° 19.640' N	144° 55.834' W
375-Porcupine Creek	64° 38.170' N	144° 57.878' W
427-South Fork	64° 11.543' N	145° 20.019' W
420-Marshall Mountain	64° 43.330' N	145° 55.242' W
460-Gilles Creek	64° 24.737' N	145° 51.134' W
472-California Creek	64° 22.402' N	144° 37.392' W
437-Central Creek	64° 22.861' N	145° 04.040' W
455-Gold Hub	64° 22.960' N	145° 31.349' W
296-Yukon Creek	64° 40.396' N	145° 58.498' W

Incident Name	Label	Comments	Elevation (Feet)	Latitude	Longitude
Middle Tanana Complex			1037	64° 09.028' N	145° 20.513' W
Middle Tanana Complex		Power line over river	716	64° 29.159' N	146° 39.895' W
Middle Tanana Complex	CMD 10	NIFC Command Repeater (4312-FCK-C237), Battery Kit (4150-FCK-575), Solar Kit (4080-FCK-092))	4105	64° 24.364' N	145° 05.336' W
Middle Tanana Complex	CMD 11	NIFC Command Repeater (4312-FCK-C182), Battery kit (4150-FCK-001), solar kit (4080-FCK-011)	3612	64° 17.062' N	145° 21.920' W
Middle Tanana Complex	CMD 9	NIFC Repeater (4312-FCK-C134), Battery Kit (4150-FCK-636), Solar Kit (4080-FCK-067))	3262	64° 40.780' N	145° 29.363' W
Middle Tanana Complex	DAS Helibase		1148	64° 03.137' N	145° 43.790' W
Middle Tanana Complex	Delta High School		1160	64° 02.570' N	145° 42.848' W
Middle Tanana Complex	H-1	Approved by H-930. Active airstrip?	982	64° 38.293' N	145° 51.262' W
Middle Tanana Complex	H-11		1037	64° 09.030' N	145° 20.513' W
Middle Tanana Complex	H-12	Approved	1035	64° 08.326' N	145° 23.661' W
Middle Tanana Complex	H-2	Approved by H-930.	966	64° 38.431' N	145° 54.042' W
Middle Tanana Complex	H-21		3063	64° 25.500' N	145° 50.170' W
Middle Tanana Complex	H-3	Grass covered. Type-2 ok.	969	64° 38.399' N	145° 53.353' W
Middle Tanana Complex	H-31		1241	64° 22.450' N	144° 58.017' W
Middle Tanana Complex	H-4	Yukon Creek	925	64° 36.543' N	146° 00.077' W
Middle Tanana Complex	H-5	Approved T2	917	64° 36.045' N	146° 01.265' W
Middle Tanana Complex	H-6	Approved Type 2	908	64° 35.922' N	146° 02.161' W
Middle Tanana Complex	H-7	Approved Type 2	890	64° 35.787' N	146° 06.035' W
Middle Tanana Complex	H13	Approved T2	1051	64° 12.001' N	145° 11.173' W
Middle Tanana Complex	H22	Approved T2	1110	64° 21.845' N	145° 34.187' W
Middle Tanana Complex	H32	Approved T2	3331	64° 23.796' N	145° 07.985' W
Middle Tanana Complex	Pogo dip		1363	64° 28.233' N	144° 54.720' W

Fire Perimeter as of
hrs
Acres

⊙ Aerial Hazard	⌋ Division Break	Ⓜ Value at Risk	— Access or Improved Road
Ⓜ Dip Site	Ⓜ Incident Command Post	Ⓜ Landmark	— Temporary Flight Restriction
Ⓜ Helispot	Ⓜ Camp	Ⓜ Repeater	▭ Wildfire Daily Fire Perimeter
Ⓜ Helibase	Ⓜ Staging Area	Ⓜ Completed Dozer Line	▭ DOD Surface Management

0 5 10 Miles