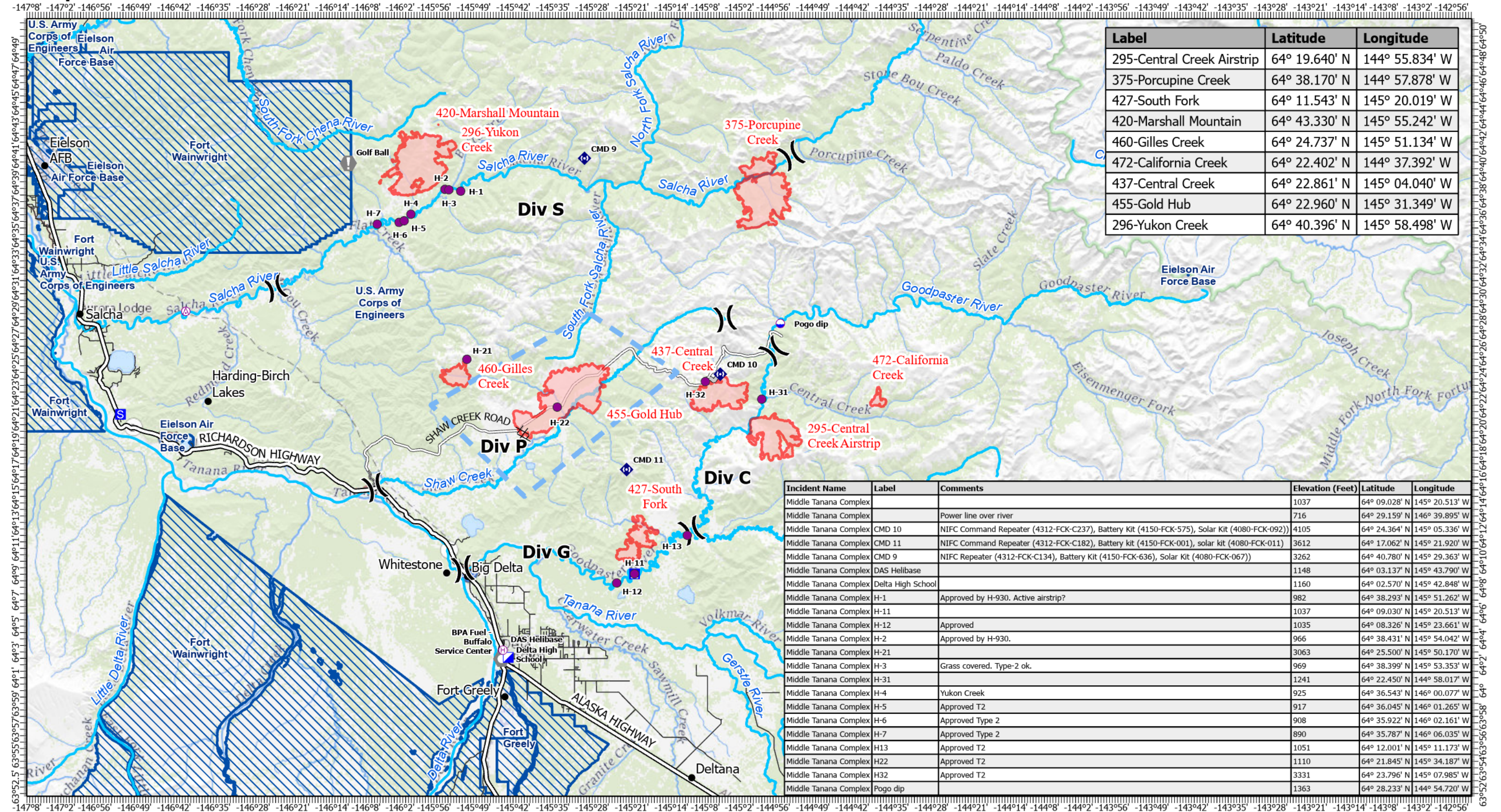


# Air Operations - Pilot

7/17/2022



Label	Latitude	Longitude
295-Central Creek Airstrip	64° 19.640' N	144° 55.834' W
375-Porcupine Creek	64° 38.170' N	144° 57.878' W
427-South Fork	64° 11.543' N	145° 20.019' W
420-Marshall Mountain	64° 43.330' N	145° 55.242' W
460-Gilles Creek	64° 24.737' N	145° 51.134' W
472-California Creek	64° 22.402' N	144° 37.392' W
437-Central Creek	64° 22.861' N	145° 04.040' W
455-Gold Hub	64° 22.960' N	145° 31.349' W
296-Yukon Creek	64° 40.396' N	145° 58.498' W

Incident Name	Label	Comments	Elevation (Feet)	Latitude	Longitude
Middle Tanana Complex			1037	64° 09.028' N	145° 20.513' W
Middle Tanana Complex		Power line over river	716	64° 29.159' N	146° 39.895' W
Middle Tanana Complex	CMD 10	NIFC Command Repeater (4312-FCK-C237), Battery Kit (4150-FCK-575), Solar Kit (4080-FCK-092))	4105	64° 24.364' N	145° 05.336' W
Middle Tanana Complex	CMD 11	NIFC Command Repeater (4312-FCK-C182), Battery kit (4150-FCK-001), solar kit (4080-FCK-011)	3612	64° 17.062' N	145° 21.920' W
Middle Tanana Complex	CMD 9	NIFC Repeater (4312-FCK-C134), Battery Kit (4150-FCK-636), Solar Kit (4080-FCK-067))	3262	64° 40.780' N	145° 29.363' W
Middle Tanana Complex	DAS Helibase		1148	64° 03.137' N	145° 43.790' W
Middle Tanana Complex	Delta High School		1160	64° 02.570' N	145° 42.848' W
Middle Tanana Complex	H-1	Approved by H-930. Active airstrip?	982	64° 38.293' N	145° 51.262' W
Middle Tanana Complex	H-11		1037	64° 09.030' N	145° 20.513' W
Middle Tanana Complex	H-12	Approved	1035	64° 08.326' N	145° 23.661' W
Middle Tanana Complex	H-2	Approved by H-930.	966	64° 38.431' N	145° 54.042' W
Middle Tanana Complex	H-21		3063	64° 25.500' N	145° 50.170' W
Middle Tanana Complex	H-3	Grass covered. Type-2 ok.	969	64° 38.399' N	145° 53.353' W
Middle Tanana Complex	H-31		1241	64° 22.450' N	144° 58.017' W
Middle Tanana Complex	H-4	Yukon Creek	925	64° 36.543' N	146° 00.077' W
Middle Tanana Complex	H-5	Approved T2	917	64° 36.045' N	146° 01.265' W
Middle Tanana Complex	H-6	Approved Type 2	908	64° 35.922' N	146° 02.161' W
Middle Tanana Complex	H-7	Approved Type 2	890	64° 35.787' N	146° 06.035' W
Middle Tanana Complex	H13	Approved T2	1051	64° 12.001' N	145° 11.173' W
Middle Tanana Complex	H22	Approved T2	1110	64° 21.845' N	145° 34.187' W
Middle Tanana Complex	H32	Approved T2	3331	64° 23.796' N	145° 07.985' W
Middle Tanana Complex	Pogo dip		1363	64° 28.233' N	144° 54.720' W

Fire Perimeter as of  
hrs  
Acres

Aerial Hazard	Division Break	Value at Risk	Access or Improved Road
Dip Site	Incident Command Post	Landmark	Temporary Flight Restriction
Helispot	Camp	Repeater	Wildfire Daily Fire Perimeter
Helibase	Staging Area	Completed Dozer Line	DOD Surface Management

0 5 10 Miles