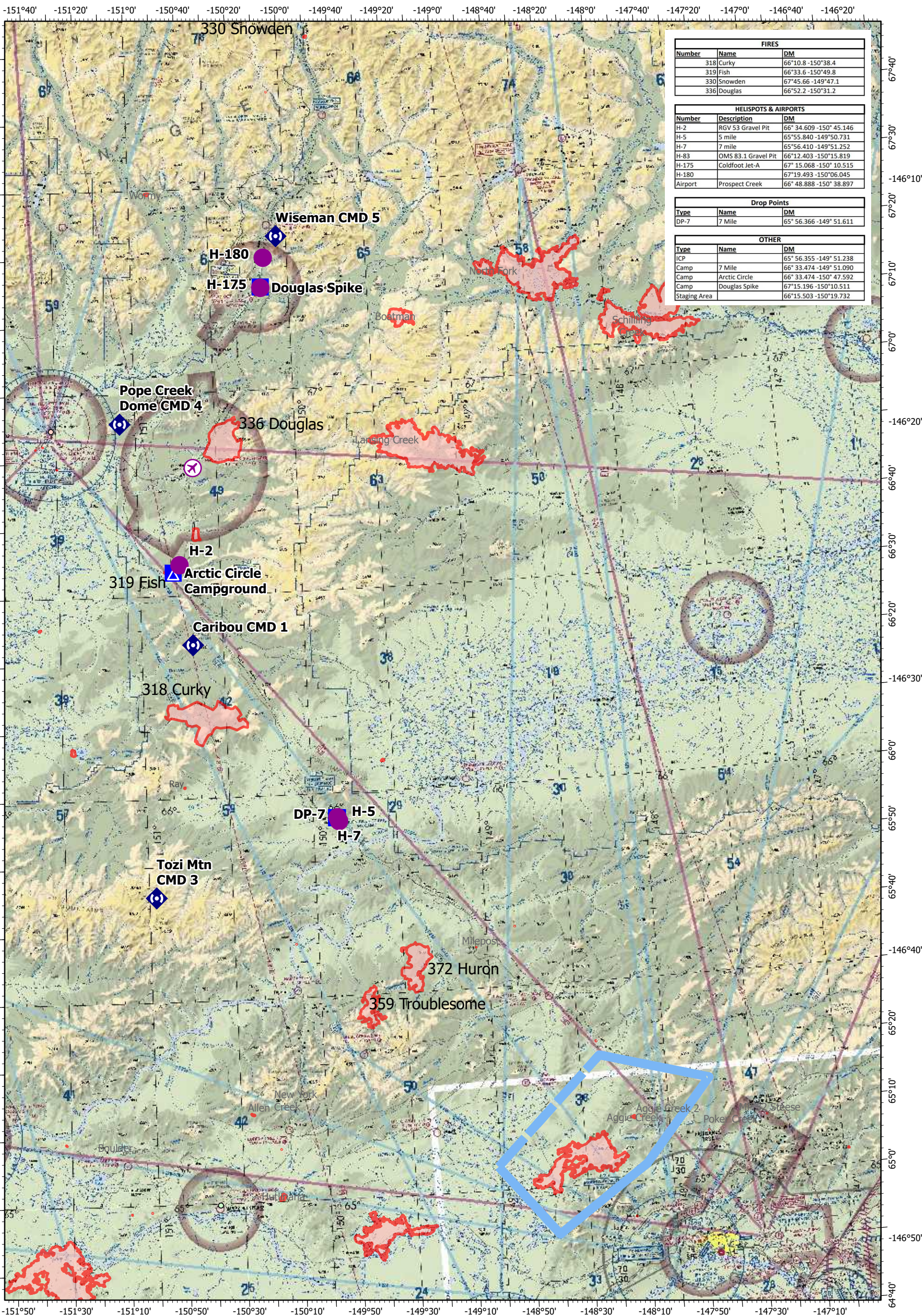


Pilot Map

Dalton Highway Complex

Operations AKTAD896 7/7/2022 75842 acres



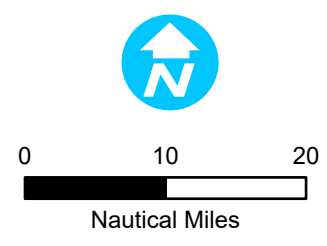
FIRES		
Number	Name	DM
318	Curky	66°10.8 -150°38.4
319	Fish	66°33.6 -150°49.8
330	Snowden	67°45.66 -149°47.1
336	Douglas	66°52.2 -150°31.2

HELISPOTS & AIRPORTS		
Number	Description	DM
H-2	RGV 53 Gravel Pit	66° 34.609 -150° 45.146
H-5	5 mile	65°55.840 -149°50.731
H-7	7 mile	65°56.410 -149°51.252
H-83	OMS 83.1 Gravel Pit	66°12.403 -150°15.819
H-175	Coldfoot Jet-A	67° 15.068 -150° 10.515
H-180		67°19.493 -150°06.045
Airport	Prospect Creek	66° 48.888 -150° 38.897

Drop Points		
Type	Name	DM
DP-7	7 Mile	65° 56.366 -149° 51.611

OTHER		
Type	Name	DM
ICP		65° 56.355 -149° 51.238
Camp	7 Mile	66° 33.474 -149° 51.090
Camp	Arctic Circle	66° 33.474 -150° 47.592
Camp	Douglas Spike	67°15.196 -150°10.511
Staging Area		66°15.503 -150°19.732

- Fuel_Locations**
- JetA
- JetA & AV
- Event Point**
- ⊗ Airstrip or Airport
- Helispot
- Logistics**
- ▣ Incident Command Post
- ▣ Drop Point
- ⊗ Camp
- Communications**
- ◆ Repeater
- Event Line**
- ▬ Temporary Flight Restriction
- Air Ops**
- ▬ Temporary Flight Restriction
- Event Polygon**
- ▬ Polygon Type
- ▬ Wildfire Daily Fire Perimeter
- ▬ Temporary Flight Restrictions



NAD83 UTM Zone 5N
OP day of use: 7/5