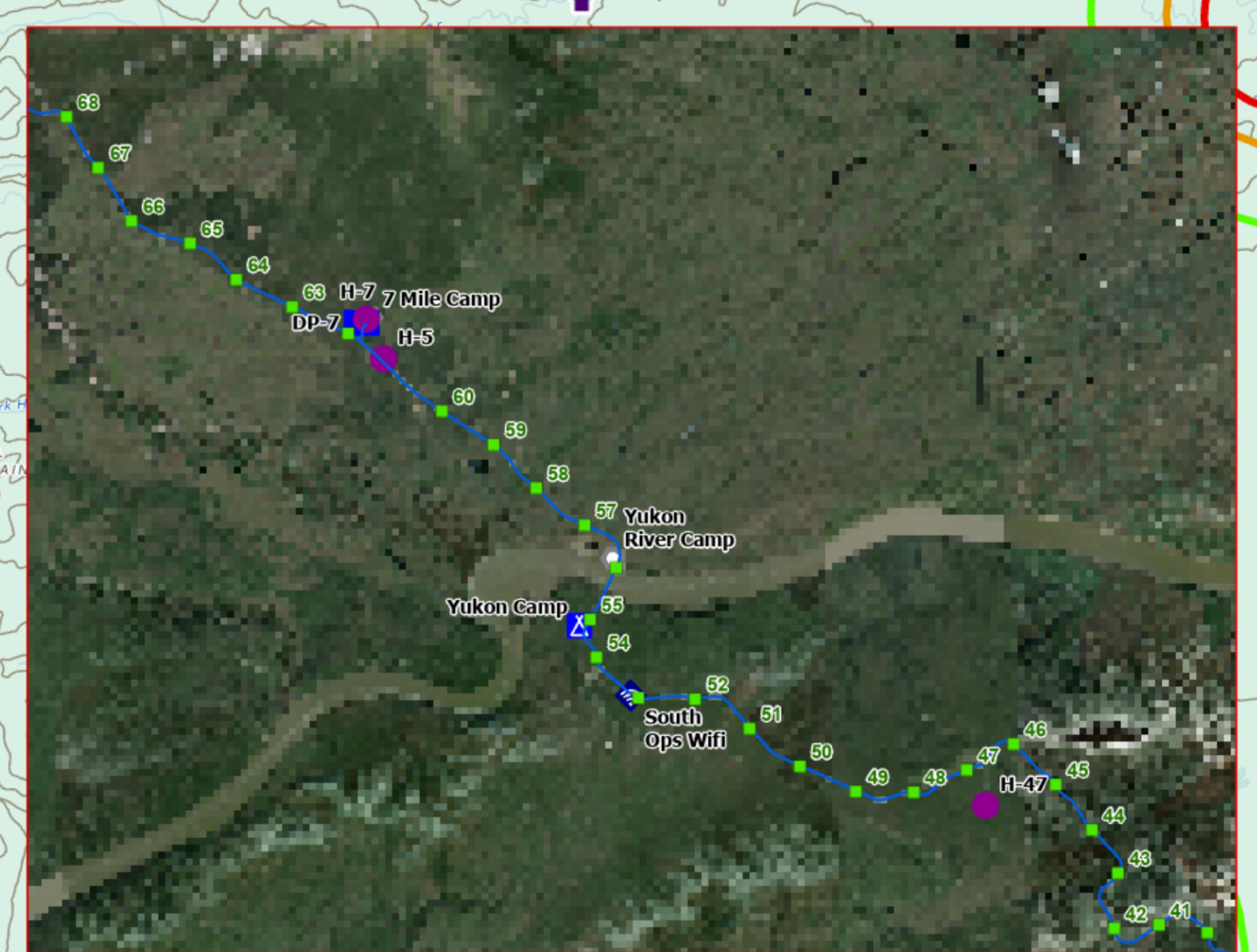
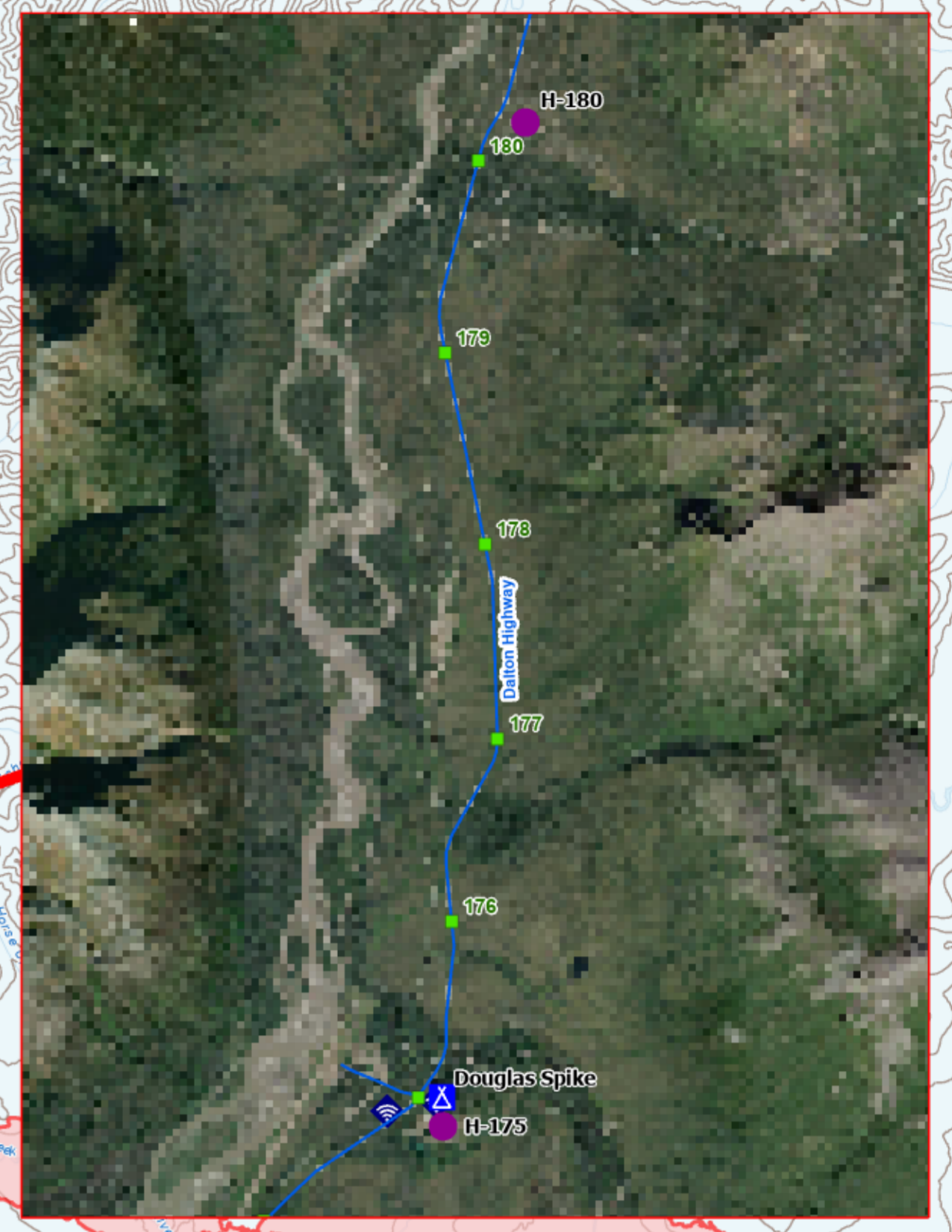
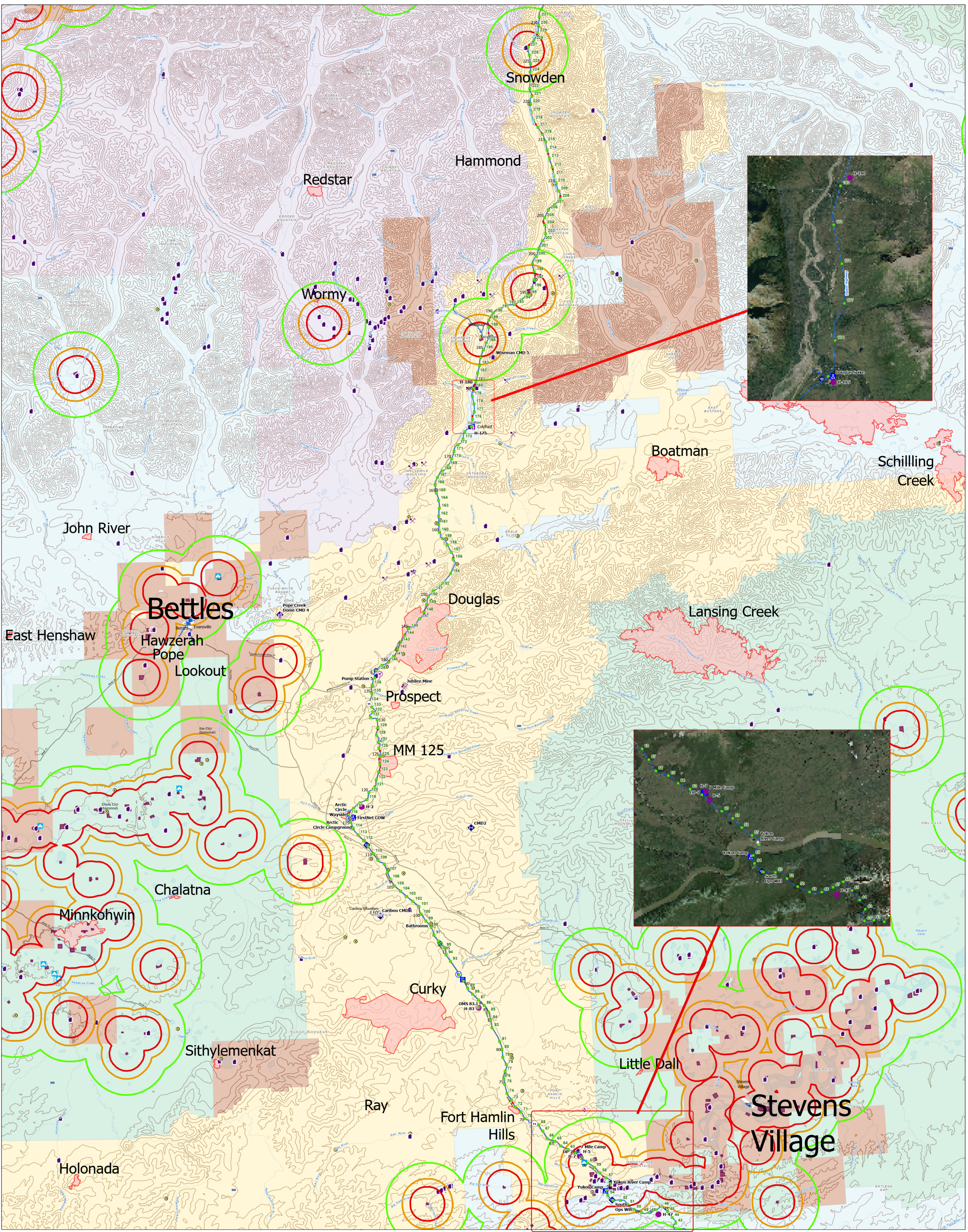


90,795 acres

7/14/2022

AKTAD896

Operations



0 2 4 6 Miles
Acres from Imagery and GPS Flight, 7/13/2022

- | | | | | | | | | |
|---|---|---|--|---|--|--|--|--|
| <ul style="list-style-type: none"> Air Operations Reference Logistics Staging Area Value at Risk Other Landmark Water Development or Draft Site | <ul style="list-style-type: none"> Staging Area Value at Risk Other Landmark Water Development or Draft Site | <ul style="list-style-type: none"> Communications Internet Access Repeater Water Water Source Polygon Type Wildfire Daily Fire Perimeter | <ul style="list-style-type: none"> Milepost Points < 1:1 mil Road Centerlines Alaska Native Place Name Populated_place Road Mileposts Native Allotment Buffers 2 Miles | <ul style="list-style-type: none"> 3 Miles 5 Miles Alaska Known Sites Database Structure Mining Camp/Equipment Camp | <ul style="list-style-type: none"> Communications RAWS Other Native Allotments Alaska Wildland Fire Jurisdictions BLM NPS | <ul style="list-style-type: none"> USFWS Military Other Federal BIA (Native Allotment, Reservation) ANCSA Regional or Village Corp. | <ul style="list-style-type: none"> State of Alaska Private Paved Roads Dirt (Not Paved) Trans Alaska Pipeline System Trans_Roads Runway | <ul style="list-style-type: none"> Accountable Property Accountable Property Pump Water Tank |
|---|---|---|--|---|--|--|--|--|



NAD 1983 UTM Zone 9N
Imagery and GPS Flight
7/13/2022
AKTAD896
ops_2022_Dalton_Highway_Complex_AKTAD896_Acres_23