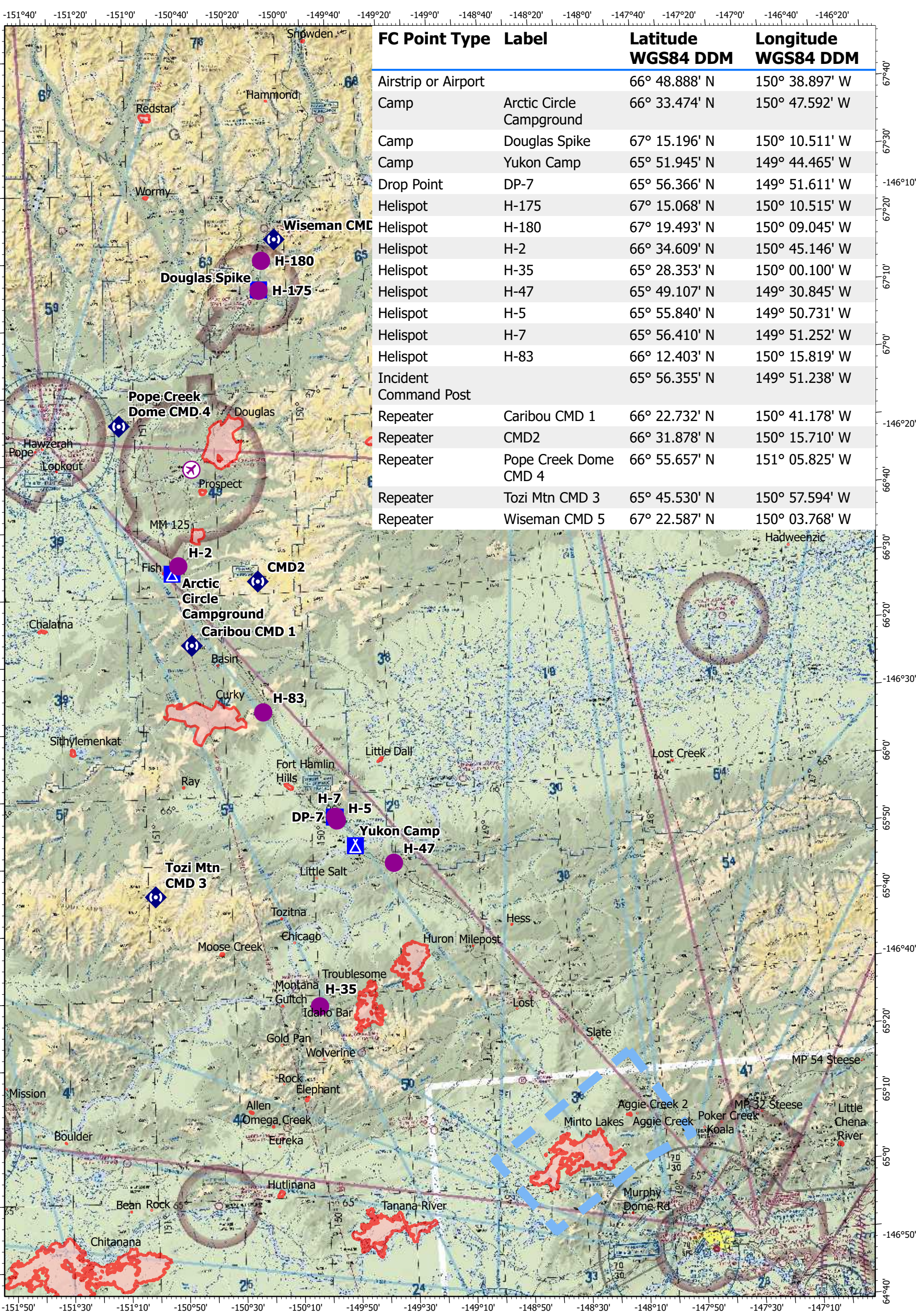
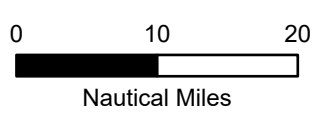


Pilot Map Dalton Highway Complex

Air Operations AKTAD896 7/14/2022 90,795 acres



FC Point Type	Label	Latitude WGS84 DDM	Longitude WGS84 DDM
Airstrip or Airport		66° 48.888' N	150° 38.897' W
Camp	Arctic Circle Campground	66° 33.474' N	150° 47.592' W
Camp	Douglas Spike	67° 15.196' N	150° 10.511' W
Camp	Yukon Camp	65° 51.945' N	149° 44.465' W
Drop Point	DP-7	65° 56.366' N	149° 51.611' W
Helispot	H-175	67° 15.068' N	150° 10.515' W
Helispot	H-180	67° 19.493' N	150° 09.045' W
Helispot	H-2	66° 34.609' N	150° 45.146' W
Helispot	H-35	65° 28.353' N	150° 00.100' W
Helispot	H-47	65° 49.107' N	149° 30.845' W
Helispot	H-5	65° 55.840' N	149° 50.731' W
Helispot	H-7	65° 56.410' N	149° 51.252' W
Helispot	H-83	66° 12.403' N	150° 15.819' W
Incident Command Post		65° 56.355' N	149° 51.238' W
Repeater	Caribou CMD 1	66° 22.732' N	150° 41.178' W
Repeater	CMD2	66° 31.878' N	150° 15.710' W
Repeater	Pope Creek Dome CMD 4	66° 55.657' N	151° 05.825' W
Repeater	Tozi Mtn CMD 3	65° 45.530' N	150° 57.594' W
Repeater	Wiseman CMD 5	67° 22.587' N	150° 03.768' W



- Air Operations**
- Airstrip or Airport
 - Helispot
- Logistics**
- Incident Command Post

- Drop Point**
- Drop Point
- Camp**
- Camp
- Communications**
- Repeater

- Air Ops**
- Temporary Flight Restriction
 - Wildfire Daily Fire Perimeter



NAD 1983 UTM Zone 5N
 OP Day of Use: 7/14/2022
 Admin
 airops_2022_Dalton_Highway_Complex_AKTAD896_ArcPro_2_9