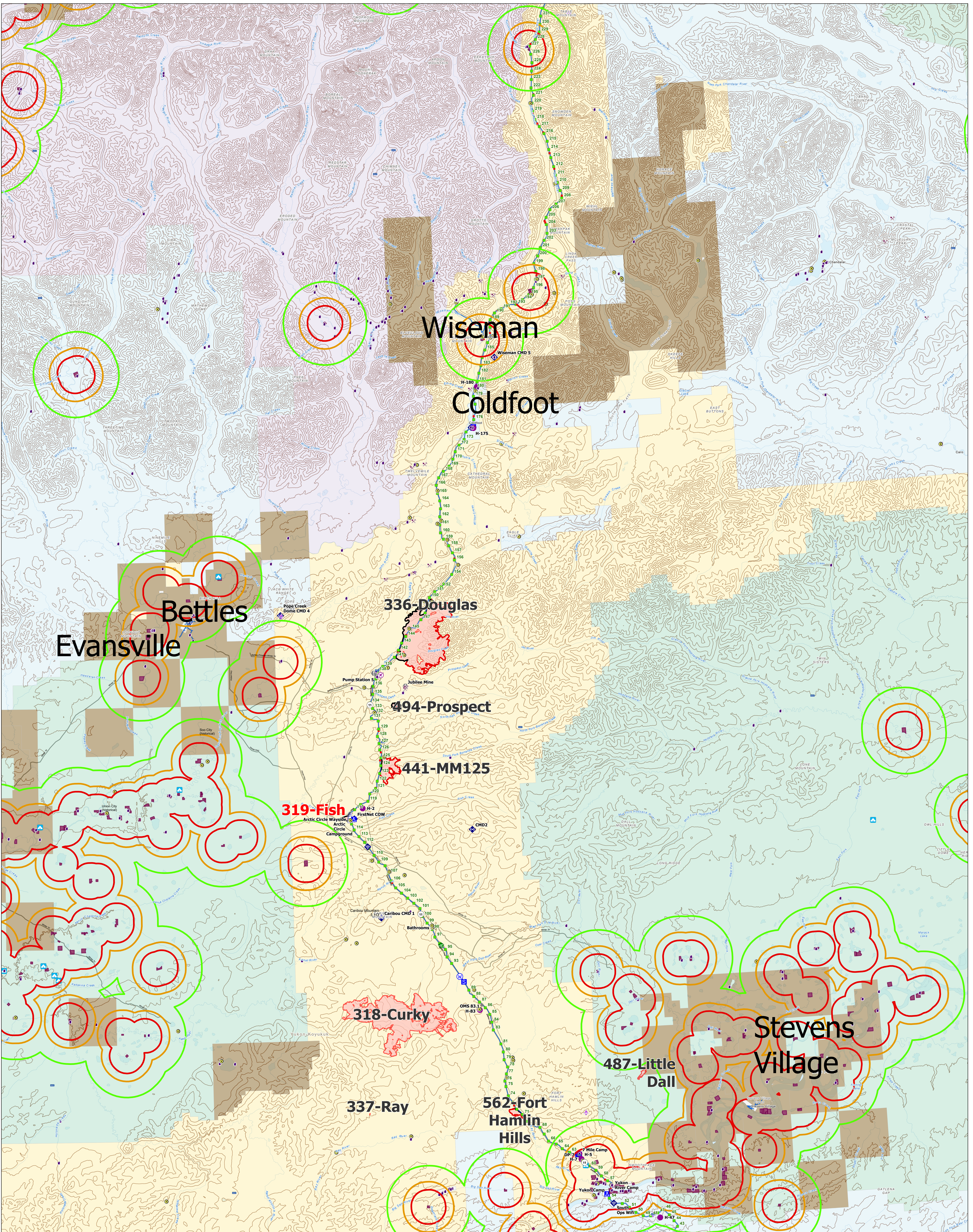


89,100 acres

7/22/2022

AKTAD896

Operations



0 2 4 6  
Miles  
Acres from Imagery and GPS Flight, 7/22/2022

- Accountable Property
- Accountable Property
- Accountable Property
- Air Operations
- Air Operations
- Air Operations
- Reference

- Logistics
- Logistics
- Logistics
- Logistics
- Logistics
- Logistics
- Logistics
- Logistics

- Other
- Other
- Other
- Other
- Other
- Other
- Other
- Other

- Water
- Water
- Water
- Water
- Water
- Water
- Water
- Water

- Native Allotment Buffers
- Native Allotment Buffers
- Native Allotment Buffers
- Native Allotment Buffers
- Native Allotment Buffers
- Native Allotment Buffers
- Native Allotment Buffers
- Native Allotment Buffers

- Mining Camp/ Equipment
- Mining Camp/ Equipment
- Mining Camp/ Equipment
- Mining Camp/ Equipment
- Mining Camp/ Equipment
- Mining Camp/ Equipment
- Mining Camp/ Equipment
- Mining Camp/ Equipment

- Alaska Wildland Fire Jurisdictions
- Alaska Wildland Fire Jurisdictions
- Alaska Wildland Fire Jurisdictions
- Alaska Wildland Fire Jurisdictions
- Alaska Wildland Fire Jurisdictions
- Alaska Wildland Fire Jurisdictions
- Alaska Wildland Fire Jurisdictions
- Alaska Wildland Fire Jurisdictions

- BIA (Native Allotment, Reservation)
- BIA (Native Allotment, Reservation)
- BIA (Native Allotment, Reservation)
- BIA (Native Allotment, Reservation)
- BIA (Native Allotment, Reservation)
- BIA (Native Allotment, Reservation)
- BIA (Native Allotment, Reservation)
- BIA (Native Allotment, Reservation)

- Dirt (Not Paved)
- Dirt (Not Paved)
- Dirt (Not Paved)
- Dirt (Not Paved)
- Dirt (Not Paved)
- Dirt (Not Paved)
- Dirt (Not Paved)
- Dirt (Not Paved)



NAD 1983 UTM Zone 5N  
Date: 7/20/2022 10:07 AM  
eps\_2022\_Dalton\_Highway\_Complex\_AKTAD896\_Acres\_2.9