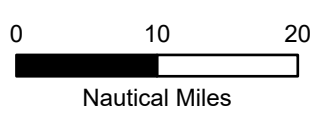
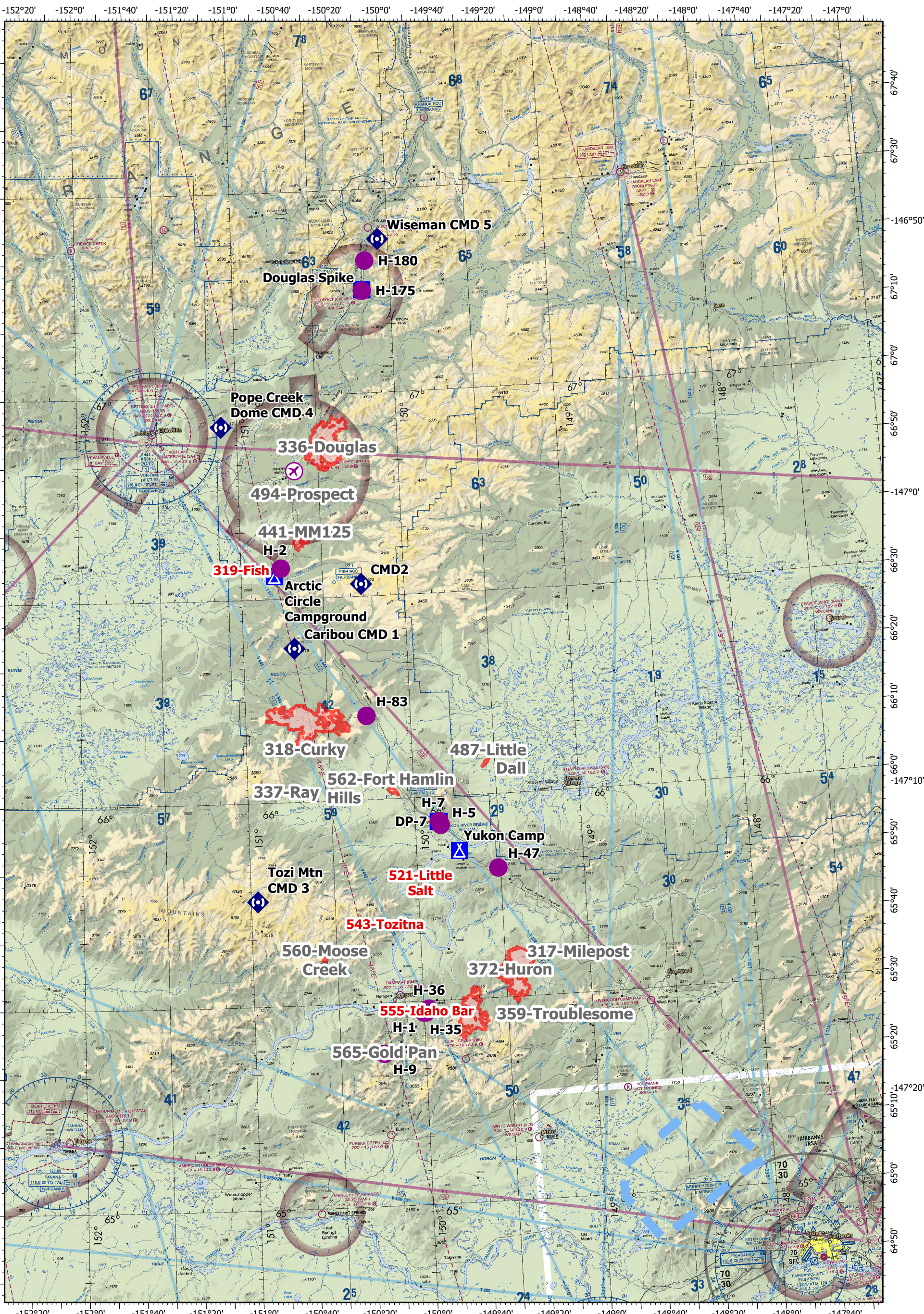


Pilot Map Dalton Highway Complex

89,100 acres
7/24/2022
AKTAD896



- | | | | | |
|-----------------------|-----------------------|-----------------------|----------------|-------------------------------|
| Air Operations | Airstrip or Airport | Drop Point | Air Ops | Temporary Flight Restriction |
| | Helispot | Camp | | Wildfire Daily Fire Perimeter |
| Logistics | Incident Command Post | Communications | | |
| | | Repeater | | |



| Feature | Label | LatWGS84_D | LongWGS84_ |
|-----------------------|--------------------------|-------------------|-------------------|
| Airstrip or Airport | | 66° 48.888' N | 150° 38.897' W |
| Camp | Arctic Circle Campground | 66° 33.474' N | 150° 47.592' W |
| Camp | Douglas Spike | 67° 15.196' N | 150° 10.511' W |
| Camp | Yukon Camp | 65° 51.945' N | 149° 44.465' W |
| Drop Point | DP-7 | 65° 56.366' N | 149° 51.611' W |
| Helispot | H-1 | 65° 28.300' N | 149° 59.348' W |
| Helispot | H-175 | 67° 15.068' N | 150° 10.515' W |
| Helispot | H-180 | 67° 19.493' N | 150° 09.045' W |
| Helispot | H-2 | 66° 34.609' N | 150° 45.146' W |
| Helispot | H-35 | 65° 28.353' N | 150° 00.100' W |
| Helispot | H-36 | 65° 28.860' N | 149° 58.110' W |
| Helispot | H-47 | 65° 49.107' N | 149° 30.845' W |
| Helispot | H-5 | 65° 55.840' N | 149° 50.731' W |
| Helispot | H-7 | 65° 56.410' N | 149° 51.252' W |
| Helispot | H-83 | 66° 12.403' N | 150° 15.819' W |
| Helispot | H-9 | 65° 22.493' N | 150° 14.537' W |
| Incident Command Post | | 65° 56.355' N | 149° 51.238' W |
| Repeater | Caribou CMD 1 | 66° 22.732' N | 150° 41.178' W |
| Repeater | CMD2 | 66° 31.878' N | 150° 15.710' W |
| Repeater | Pope Creek Dome CMD 4 | 66° 55.657' N | 151° 05.825' W |
| Repeater | Tozi Mtn CMD 3 | 65° 45.530' N | 150° 57.594' W |
| Repeater | Wiseman CMD 5 | 67° 22.587' N | 150° 03.768' W |