

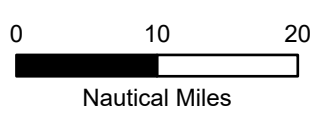
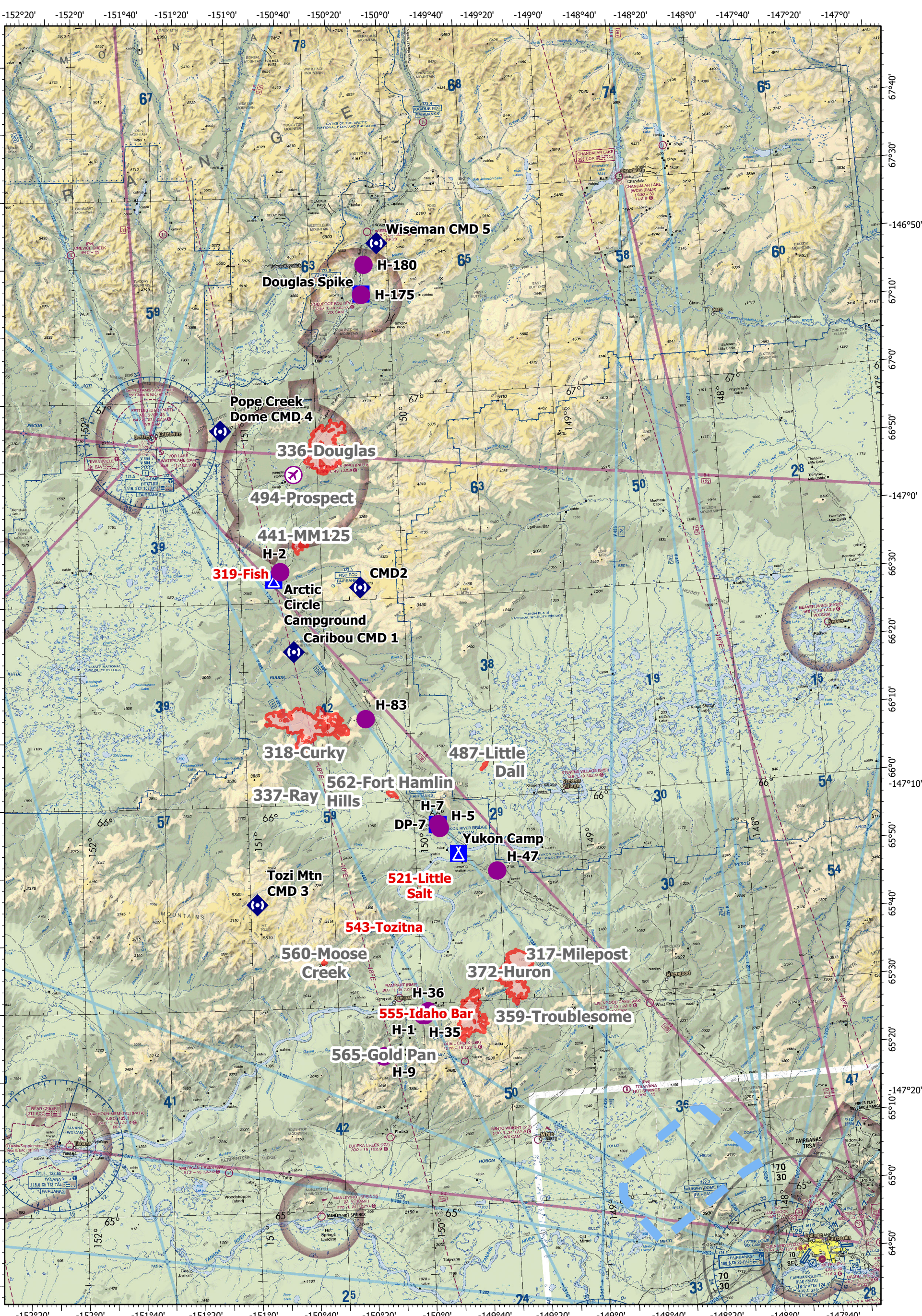
Pilot Map Dalton Highway Complex

89,100 acres

7/26/2022

AKTAD896

Pilot Map



- | | | | | | | |
|-----------------------|-----------------------|-----------------------|-------------------|------------|-------------------------------|------------------------------|
| Air Operations | Airstrip or Airport | Helispot | Drop Point | Drop Point | Air Ops | Temporary Flight Restriction |
| Logistics | Incident Command Post | Communications | Repeater | Camp | Wildfire Daily Fire Perimeter | |



NAD 1983 UTM Zone 5N
OP Day of Use: 7/24/2022

Feature	Label	LatWGS84_D	LongWGS84_
Airstrip or Airport		66° 48.888' N	150° 38.897' W
Camp	Arctic Circle Campground	66° 33.474' N	150° 47.592' W
Camp	Douglas Spike	67° 15.196' N	150° 10.511' W
Camp	Yukon Camp	65° 51.945' N	149° 44.465' W
Drop Point	DP-7	65° 56.366' N	149° 51.611' W
Helispot	H-1	65° 28.300' N	149° 59.348' W
Helispot	H-175	67° 15.068' N	150° 10.515' W
Helispot	H-180	67° 19.493' N	150° 09.045' W
Helispot	H-2	66° 34.609' N	150° 45.146' W
Helispot	H-35	65° 28.353' N	150° 00.100' W
Helispot	H-36	65° 28.860' N	149° 58.110' W
Helispot	H-47	65° 49.107' N	149° 30.845' W
Helispot	H-5	65° 55.840' N	149° 50.731' W
Helispot	H-7	65° 56.410' N	149° 51.252' W
Helispot	H-83	66° 12.403' N	150° 15.819' W
Helispot	H-9	65° 22.493' N	150° 14.537' W
Incident Command Post		65° 56.355' N	149° 51.238' W
Repeater	Caribou CMD 1	66° 22.732' N	150° 41.178' W
Repeater	CMD2	66° 31.878' N	150° 15.710' W
Repeater	Pope Creek Dome CMD 4	66° 55.657' N	151° 05.825' W
Repeater	Tozi Mtn CMD 3	65° 45.530' N	150° 57.594' W
Repeater	Wiseman CMD 5	67° 22.587' N	150° 03.768' W