

Lightning

Poorman Complex

AK-GAD-897

Ops Period 7/7/22

Poorman Complex Fires

335-Donut
AK-TAD-335
37858.8 acres at 7/6/2022 0900

352-Camp Creek
AK-GAD-352
14644.4 acres at 7/6/2022 0900

369-Sunset
AK-TAD-369
3001.5 acres at 7/3/2022 1753

Lightning Data:

From 0600 AKDT the previous day to map publication date/time

Alaska Lightning Detection Network - Alaska Fire Service



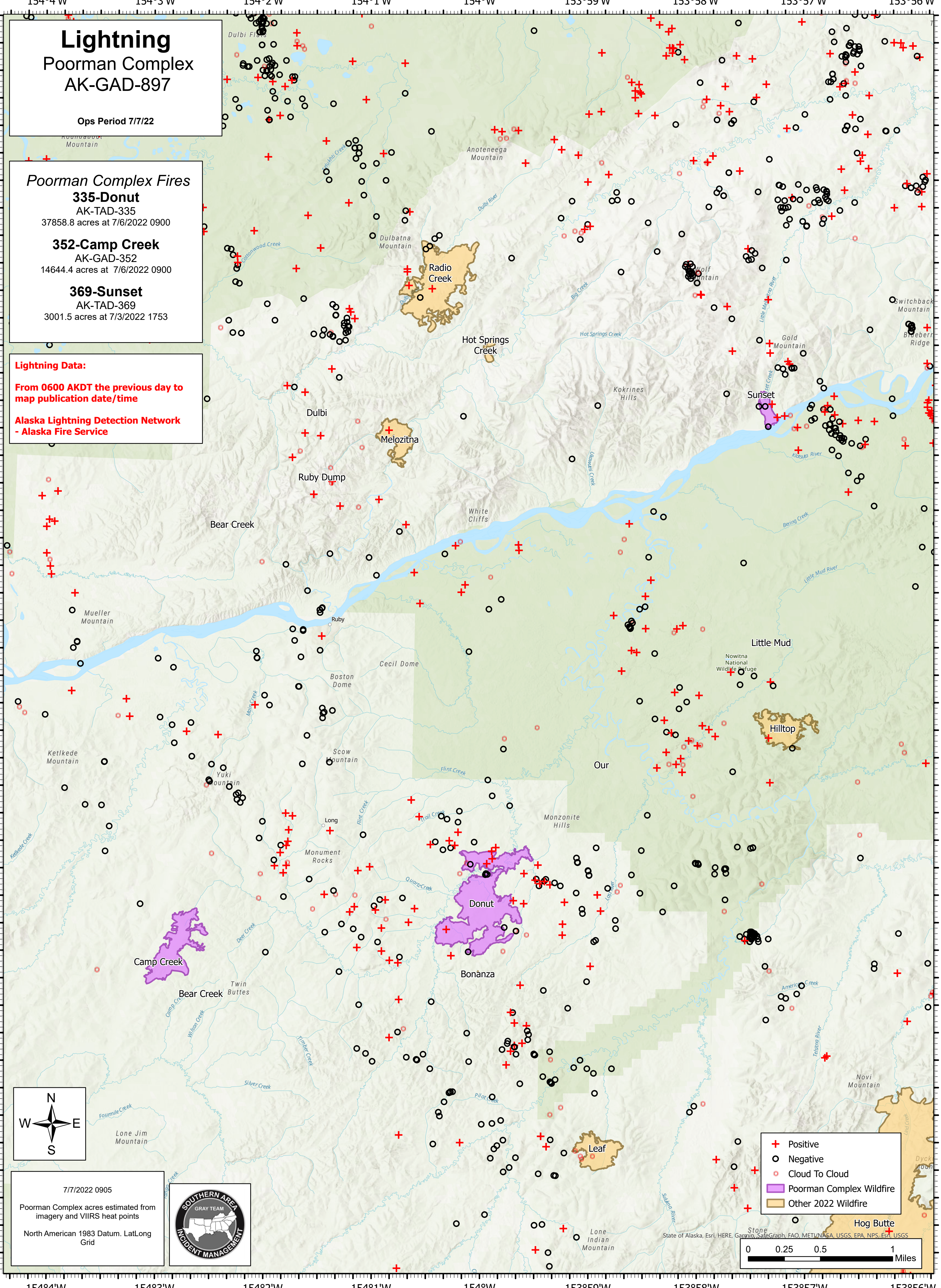
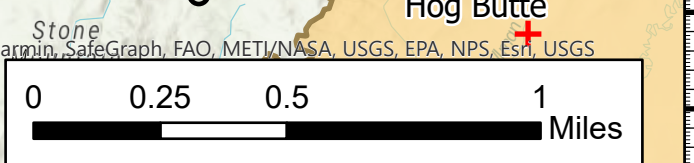
7/7/2022 0905

Poorman Complex acres estimated from imagery and VIIRS heat points

North American 1983 Datum, Lat/Long Grid



- + Positive
- Negative
- Cloud To Cloud
- Poorman Complex Wildfire
- Other 2022 Wildfire



State of Alaska, Esri, HERE, Garmin, SafeGraph, FAO, METI/NASA, USGS, EPA, NPS, Esri, USGS