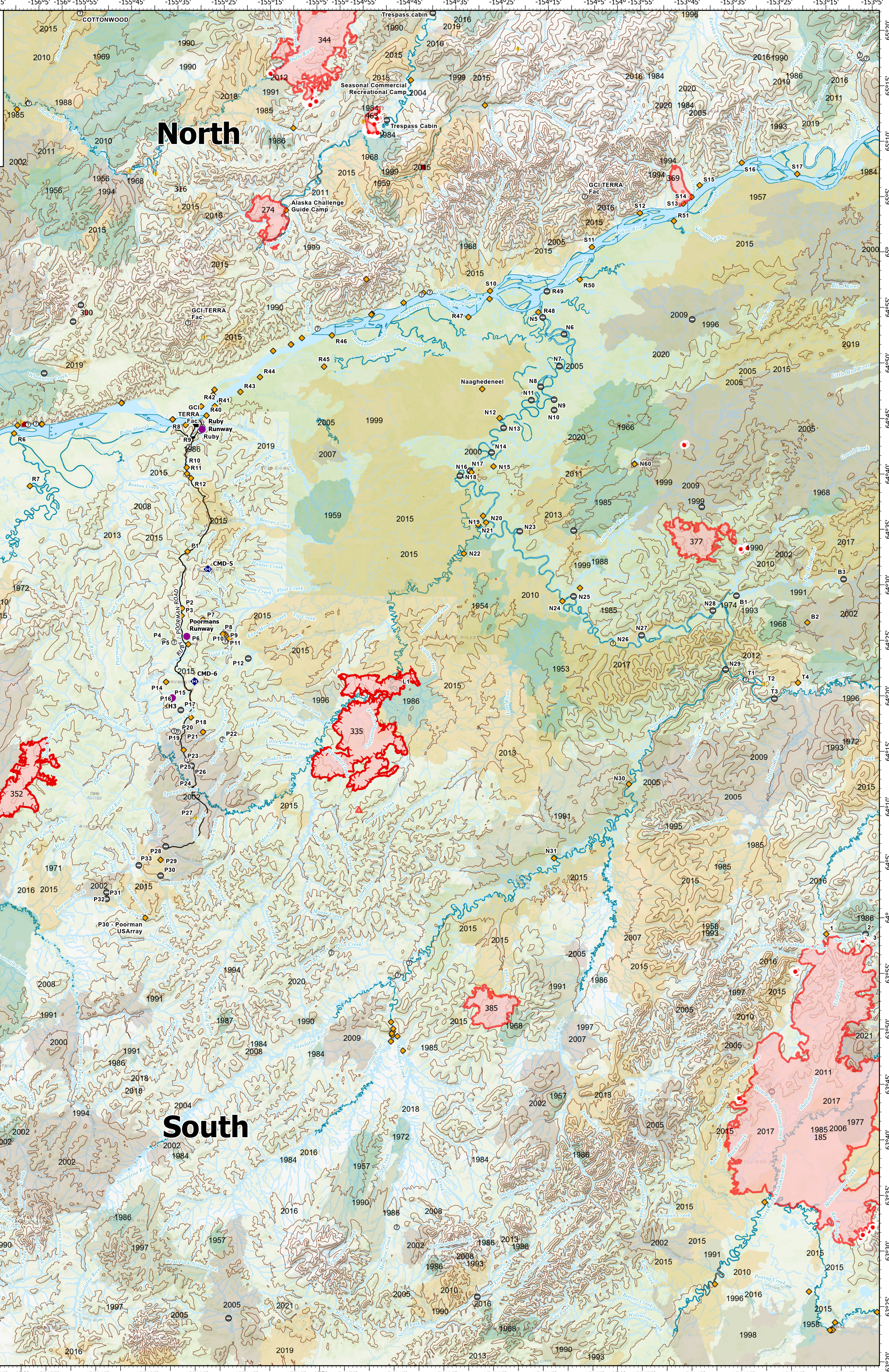


# Operations

## Poorman Complex

### AK-GAD-897

Ops Period 7/7/22



ID	Protection	Descriptio	Location
Y1	No Protection	Multiple structures	64° 25.088' N x 156° 16.575' W
L1	Full	Cabin	64° 21.877' N x 154° 45.647' W
P1	Full	Cabin on Allotment	64° 32.721' N x 155° 30.265' W
P2	Full	Cabin on Allotment	64° 27.597' N x 155° 31.130' W
P3	Full	Cabin on Allotment	64° 26.928' N x 155° 31.190' W
P4	Undesignated	Collapsed Cabin	64° 24.593' N x 155° 34.773' W
P5	Undesignated	Abandoned Structure	64° 24.529' N x 155° 32.624' W
P6	Full	Operational Mine Site	64° 24.376' N x 155° 29.671' W
P7	Full	Fuel Tanks	64° 26.612' N x 155° 26.765' W
P8	Full	Operational Mine Site	64° 25.359' N x 155° 22.503' W
P9	Full	Operational Mine Site	64° 25.323' N x 155° 22.074' W
P10	Full	Operational Mine Site	64° 24.962' N x 155° 21.210' W
P11	Undesignated	Abandoned Mine Site	64° 24.688' N x 155° 22.016' W
P12	Undesignated	Abandoned Mine Site	64° 23.207' N x 155° 17.108' W
P13	Undesignated	Small Structure	64° 21.071' N x 155° 28.092' W
P14	Full	Operational Mine Site	64° 20.931' N x 155° 34.122' W
P15	Full	Cabin on Airstrip	64° 19.402' N x 155° 32.888' W
P16	Full	Operational Mine Site	64° 18.773' N x 155° 33.529' W

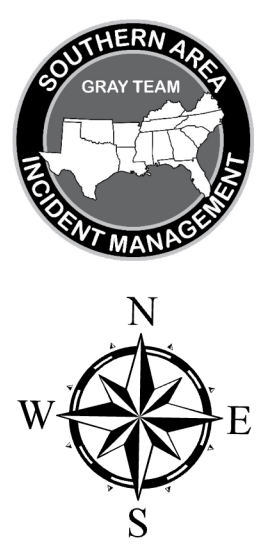
ID	Protection	Descriptio	Location
P17	Full	Operational Mine Site	64° 18.438' N x 155° 30.924' W
P18	Full	Fuel Tanks	64° 17.796' N x 155° 28.788' W
P19	Undesignated	Collapsed Cabin	64° 16.537' N x 155° 32.225' W
P20	Undesignated	Cabin	64° 16.461' N x 155° 31.453' W
P21	Full	Cabin and vehicles	64° 16.503' N x 155° 26.216' W
P22	Undesignated	Abandoned Mine Site	64° 15.878' N x 155° 22.135' W
P23	Full	Bridge	64° 14.852' N x 155° 30.149' W
P24	Full	Bridge	64° 11.278' N x 155° 27.853' W
P25	Undesignated	Old Dozer	64° 13.980' N x 155° 29.375' W
P26	No Protection	Broken small bridge	64° 13.444' N x 155° 28.420' W
P27	Avoid	Old metal barrels	64° 08.686' N x 155° 27.263' W
P28	No Protection	Destroyed equipment and shacks	64° 06.110' N x 155° 33.403' W
P29	Full	RAWS Location, Cabin nearby.	64° 04.890' N x 155° 34.394' W
P30	Full	RAWS Location.	63° 59.640' N x 155° 37.282' W
P31	No Protection	2 Old Structures	64° 01.252' N x 155° 45.317' W
P32	No Protection	Single structure	64° 01.842' N x 155° 45.354' W
P33	No Protection	Burned down structures	64° 04.342' N x 155° 38.848' W

- Event Polygon
  - Wildfire Daily Fire Perimeter
- Event Point
  - Helispot
  - Repeater
  - Heat VIIRS < 12 hrs
- Alaska Known Sites (AKS) Protection Level
  - Critical
  - Full
  - No Protection
  - Avoid
  - Undesignated
  - Unknown
- Fire History Perimeters
  - 2020 - 2029
  - 2010 - 2019
  - 2000 - 2009
  - 1990 - 1999
  - 1949 - 1989

**335-Donut**  
AK-TAD-335  
37858.8 acres at 335-Donut

**352-Camp Creek**  
AK-GAD-352  
14644.4 acres at 7/6/2022 0900

**369-Sunset**  
AK-TAD-369  
3001.5 acres at 7/3/2022 1753



TCLAPP  
20220706 1443  
Acres from IR and field reports  
WGS84 Lat/Long Grid