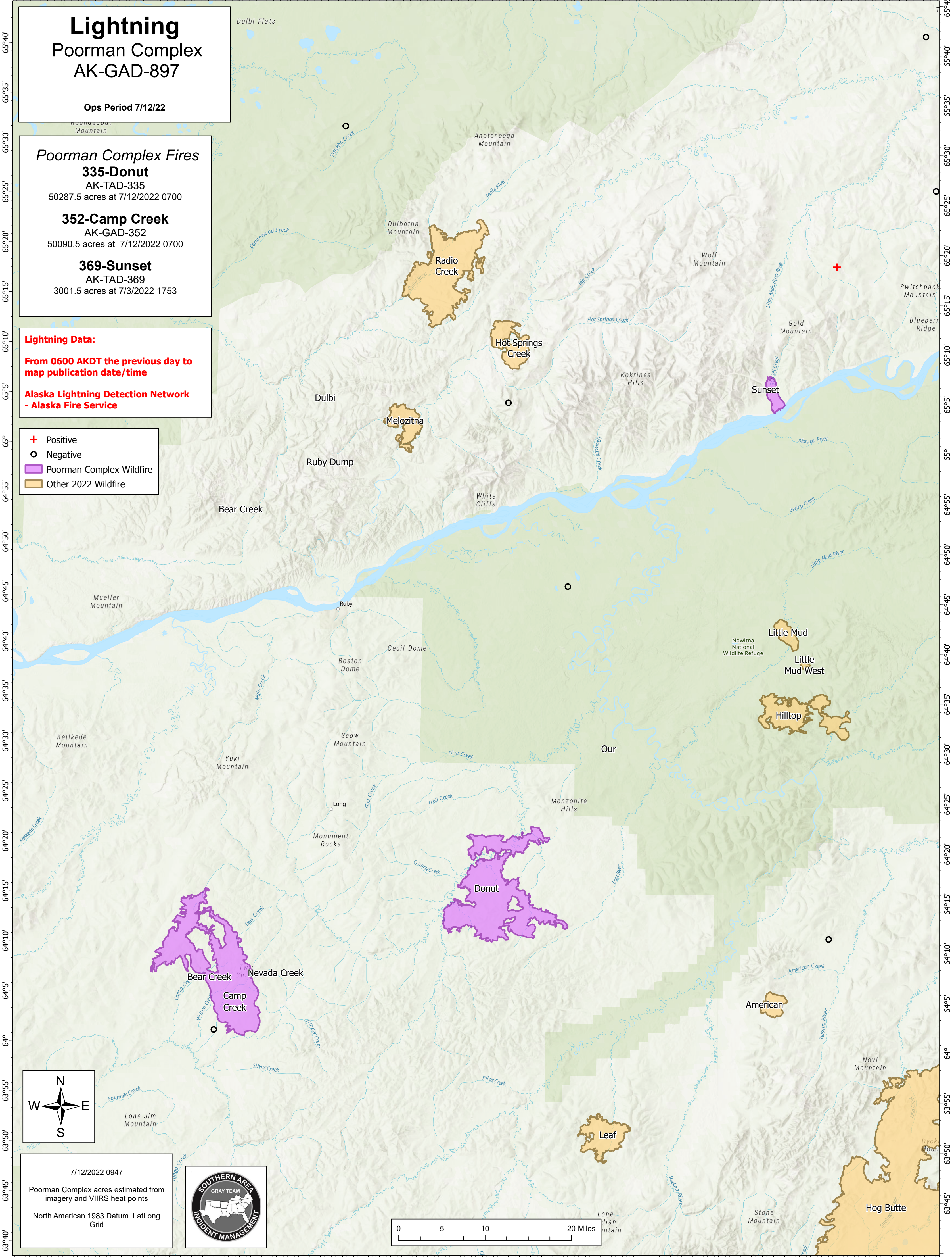


-156°50' -156°40' -156°30' -156°20' -156°10' -156° -155°50' -155°40' -155°30' -155°20' -155°10' -155° -154°50' -154°40' -154°30' -154°20' -154°10' -154° -153°50' -153°40' -153°30' -153°20' -153°10'



Lightning
Poorman Complex
AK-GAD-897

Ops Period 7/12/22

Poorman Complex Fires

335-Donut
AK-TAD-335
50287.5 acres at 7/12/2022 0700

352-Camp Creek
AK-GAD-352
50090.5 acres at 7/12/2022 0700

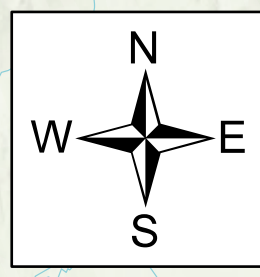
369-Sunset
AK-TAD-369
3001.5 acres at 7/3/2022 1753

Lightning Data:

From 0600 AKDT the previous day to map publication date/time

Alaska Lightning Detection Network - Alaska Fire Service

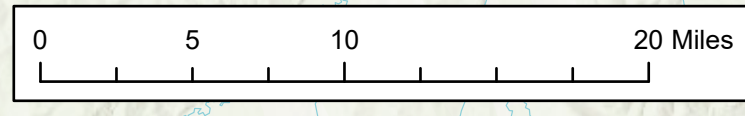
- + Positive
- Negative
- Poorman Complex Wildfire
- Other 2022 Wildfire



7/12/2022 0947

Poorman Complex acres estimated from imagery and VIIRS heat points

North American 1983 Datum. LatLong Grid



-156°35' -156°25' -156°15' -156°5' -156° -155°50' -155°40' -155°30' -155°20' -155°10' -155° -154°50' -154°40' -154°30' -154°20' -154°10' -154° -153°50' -153°40' -153°30' -153°20' -153°10'