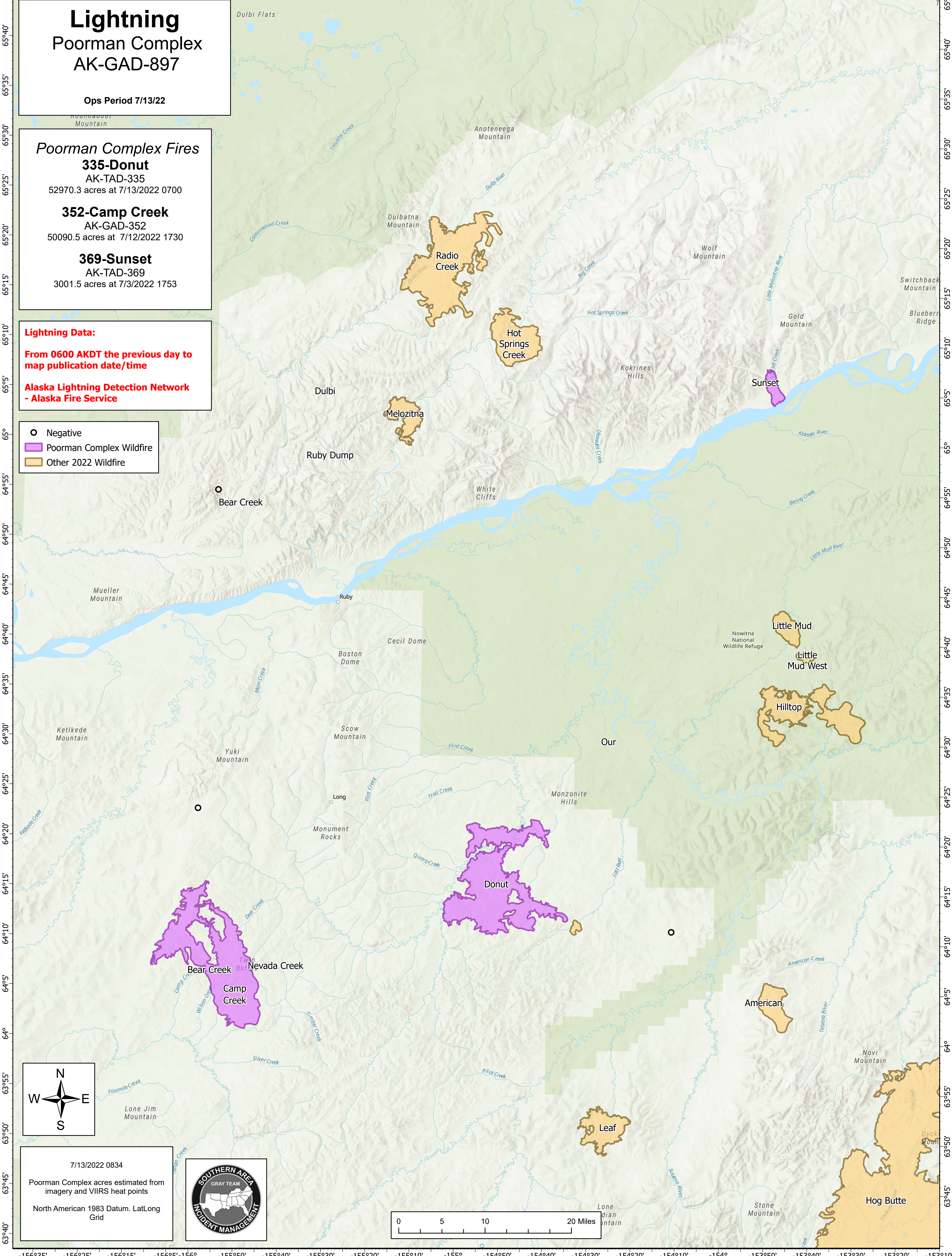


-156°50' -156°40' -156°30' -156°20' -156°10' -156° -155°50' -155°40' -155°30' -155°20' -155°10' -155° -154°50' -154°40' -154°30' -154°20' -154°10' -154° -153°50' -153°40' -153°30' -153°20' -153°10'



**Lightning**  
**Poorman Complex**  
**AK-GAD-897**

Ops Period 7/13/22

**Poorman Complex Fires**

**335-Donut**  
AK-TAD-335  
52970.3 acres at 7/13/2022 0700

**352-Camp Creek**  
AK-GAD-352  
50090.5 acres at 7/12/2022 1730

**369-Sunset**  
AK-TAD-369  
3001.5 acres at 7/3/2022 1753

**Lightning Data:**

From 0600 AKDT the previous day to map publication date/time

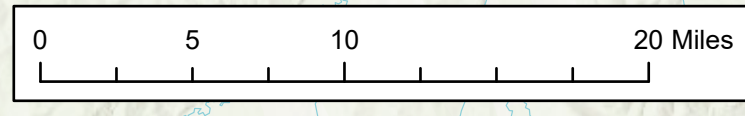
Alaska Lightning Detection Network - Alaska Fire Service

○ Negative  
■ Poorman Complex Wildfire  
■ Other 2022 Wildfire

7/13/2022 0834

Poorman Complex acres estimated from imagery and VIIRS heat points

North American 1983 Datum, Lat/Long Grid



-156°35' -156°25' -156°15' -156°5' -156° -155°50' -155°40' -155°30' -155°20' -155°10' -155° -154°50' -154°40' -154°30' -154°20' -154°10' -154° -153°50' -153°40' -153°30' -153°20' -153°10'