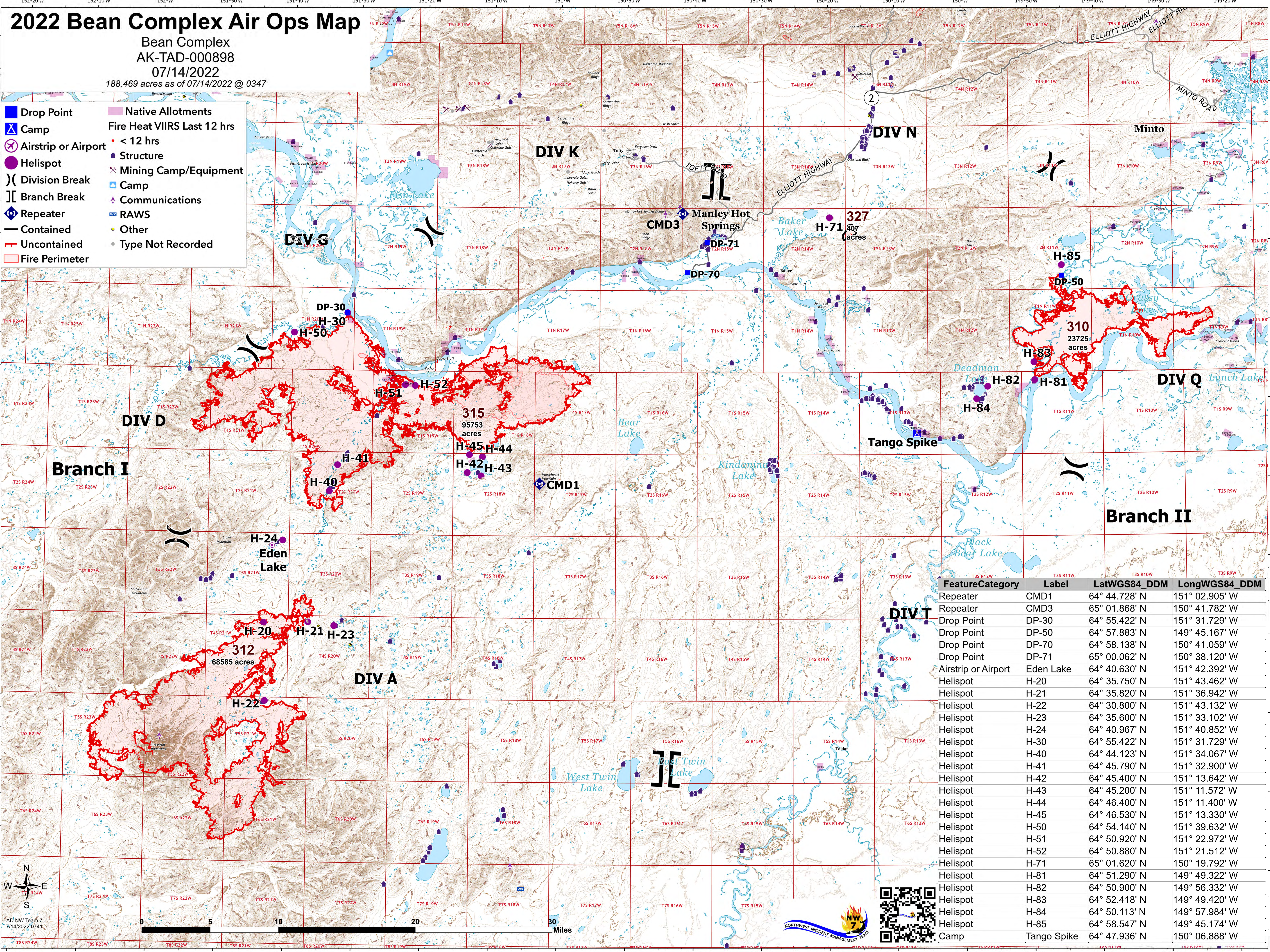


2022 Bean Complex Air Ops Map

Bean Complex
AK-TAD-000898
07/14/2022

188,469 acres as of 07/14/2022 @ 0347

| | |
|---------------------|------------------------------------|
| Drop Point | Native Allotments |
| Camp | Fire Heat VIIRS Last 12 hrs |
| Airstrip or Airport | < 12 hrs |
| Helispot | Structure |
| Division Break | Mining Camp/Equipment |
| Branch Break | Camp |
| Repeater | Communications |
| Contained | RAWS |
| Uncontained | Other |
| Fire Perimeter | Type Not Recorded |



| Feature | Category | Label | LatWGS84_DDM | LongWGS84_DDM |
|---------------------|-------------|-------|---------------|----------------|
| Repeater | CMD1 | | 64° 44.728' N | 151° 02.905' W |
| Repeater | CMD3 | | 65° 01.868' N | 150° 41.782' W |
| Drop Point | DP-30 | | 64° 55.422' N | 151° 31.729' W |
| Drop Point | DP-50 | | 64° 57.883' N | 149° 45.167' W |
| Drop Point | DP-70 | | 64° 58.138' N | 150° 41.059' W |
| Drop Point | DP-71 | | 65° 00.062' N | 150° 38.120' W |
| Airstrip or Airport | Eden Lake | | 64° 40.630' N | 151° 42.392' W |
| Helispot | H-20 | | 64° 35.750' N | 151° 43.462' W |
| Helispot | H-21 | | 64° 35.820' N | 151° 36.942' W |
| Helispot | H-22 | | 64° 30.800' N | 151° 43.132' W |
| Helispot | H-23 | | 64° 35.600' N | 151° 33.102' W |
| Helispot | H-24 | | 64° 40.967' N | 151° 40.852' W |
| Helispot | H-30 | | 64° 55.422' N | 151° 31.729' W |
| Helispot | H-40 | | 64° 44.123' N | 151° 34.067' W |
| Helispot | H-41 | | 64° 45.790' N | 151° 32.900' W |
| Helispot | H-42 | | 64° 45.400' N | 151° 13.642' W |
| Helispot | H-43 | | 64° 45.200' N | 151° 11.572' W |
| Helispot | H-44 | | 64° 46.400' N | 151° 11.400' W |
| Helispot | H-45 | | 64° 46.530' N | 151° 13.330' W |
| Helispot | H-50 | | 64° 54.140' N | 151° 39.632' W |
| Helispot | H-51 | | 64° 50.920' N | 151° 22.972' W |
| Helispot | H-52 | | 64° 50.880' N | 151° 21.512' W |
| Helispot | H-71 | | 65° 01.620' N | 150° 19.792' W |
| Helispot | H-81 | | 64° 51.290' N | 149° 49.322' W |
| Helispot | H-82 | | 64° 50.900' N | 149° 56.332' W |
| Helispot | H-83 | | 64° 52.418' N | 149° 49.420' W |
| Helispot | H-84 | | 64° 50.113' N | 149° 57.984' W |
| Helispot | H-85 | | 64° 58.547' N | 149° 45.174' W |
| Camp | Tango Spike | | 64° 47.936' N | 150° 06.888' W |

