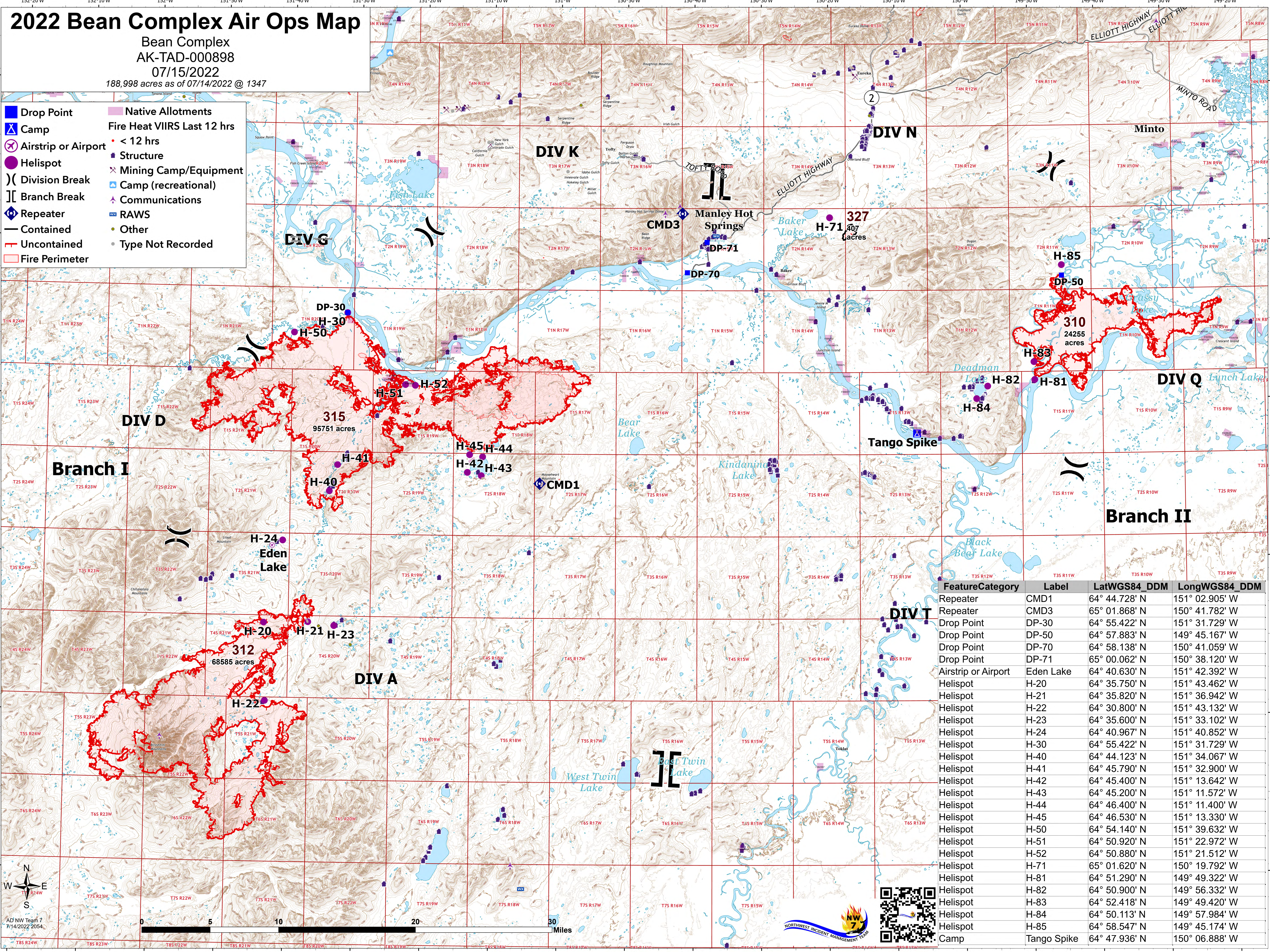


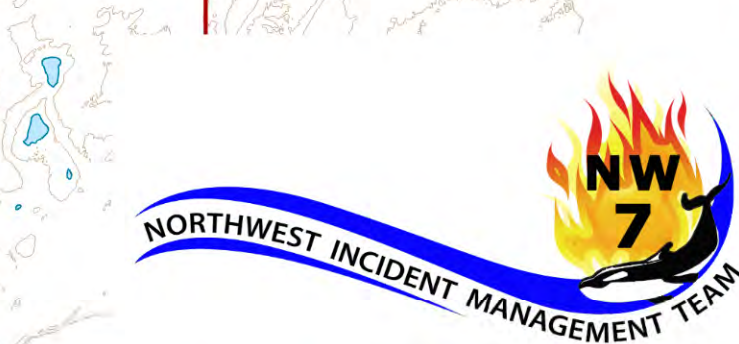
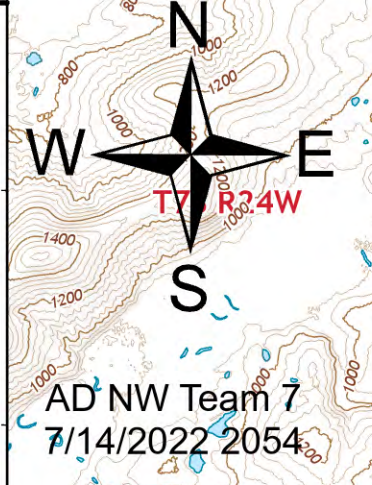
# 2022 Bean Complex Air Ops Map

Bean Complex  
AK-TAD-000898  
07/15/2022  
188,998 acres as of 07/14/2022 @ 1347

- Drop Point
- ▲ Camp
- ⊗ Airstrip or Airport
- Helispot
- ) Division Break
- [ Branch Break
- ⬠ Repeater
- Contained
- Uncontained
- Fire Perimeter
- Native Allotments
- Fire Heat VIIRS Last 12 hrs
- < 12 hrs
- Structure
- ⊗ Mining Camp/Equipment
- ⬠ Camp (recreational)
- ▲ Communications
- ⬠ RAWS
- Other
- Type Not Recorded



Feature	Category	Label	LatWGS84_DDM	LongWGS84_DDM
Repeater	CMD1		64° 44.728' N	151° 02.905' W
Repeater	CMD3		65° 01.868' N	150° 41.782' W
Drop Point	DP-30		64° 55.422' N	151° 31.729' W
Drop Point	DP-50		64° 57.883' N	149° 45.167' W
Drop Point	DP-70		64° 58.138' N	150° 41.059' W
Drop Point	DP-71		65° 00.062' N	150° 38.120' W
Airstrip or Airport	Eden Lake		64° 40.630' N	151° 42.392' W
Helispot	H-20		64° 35.750' N	151° 43.462' W
Helispot	H-21		64° 35.820' N	151° 36.942' W
Helispot	H-22		64° 30.800' N	151° 43.132' W
Helispot	H-23		64° 35.600' N	151° 33.102' W
Helispot	H-24		64° 40.967' N	151° 40.852' W
Helispot	H-30		64° 55.422' N	151° 31.729' W
Helispot	H-40		64° 44.123' N	151° 34.067' W
Helispot	H-41		64° 45.790' N	151° 32.900' W
Helispot	H-42		64° 45.400' N	151° 13.642' W
Helispot	H-43		64° 45.200' N	151° 11.572' W
Helispot	H-44		64° 46.400' N	151° 11.400' W
Helispot	H-45		64° 46.530' N	151° 13.330' W
Helispot	H-50		64° 54.140' N	151° 39.632' W
Helispot	H-51		64° 50.920' N	151° 22.972' W
Helispot	H-52		64° 50.880' N	151° 21.512' W
Helispot	H-71		65° 01.620' N	150° 19.792' W
Helispot	H-81		64° 51.290' N	149° 49.322' W
Helispot	H-82		64° 50.900' N	149° 56.332' W
Helispot	H-83		64° 52.418' N	149° 49.420' W
Helispot	H-84		64° 50.113' N	149° 57.984' W
Helispot	H-85		64° 58.547' N	149° 45.174' W
Camp	Tango Spike		64° 47.936' N	150° 06.888' W



AD NW Team 7  
7/14/2022 2054