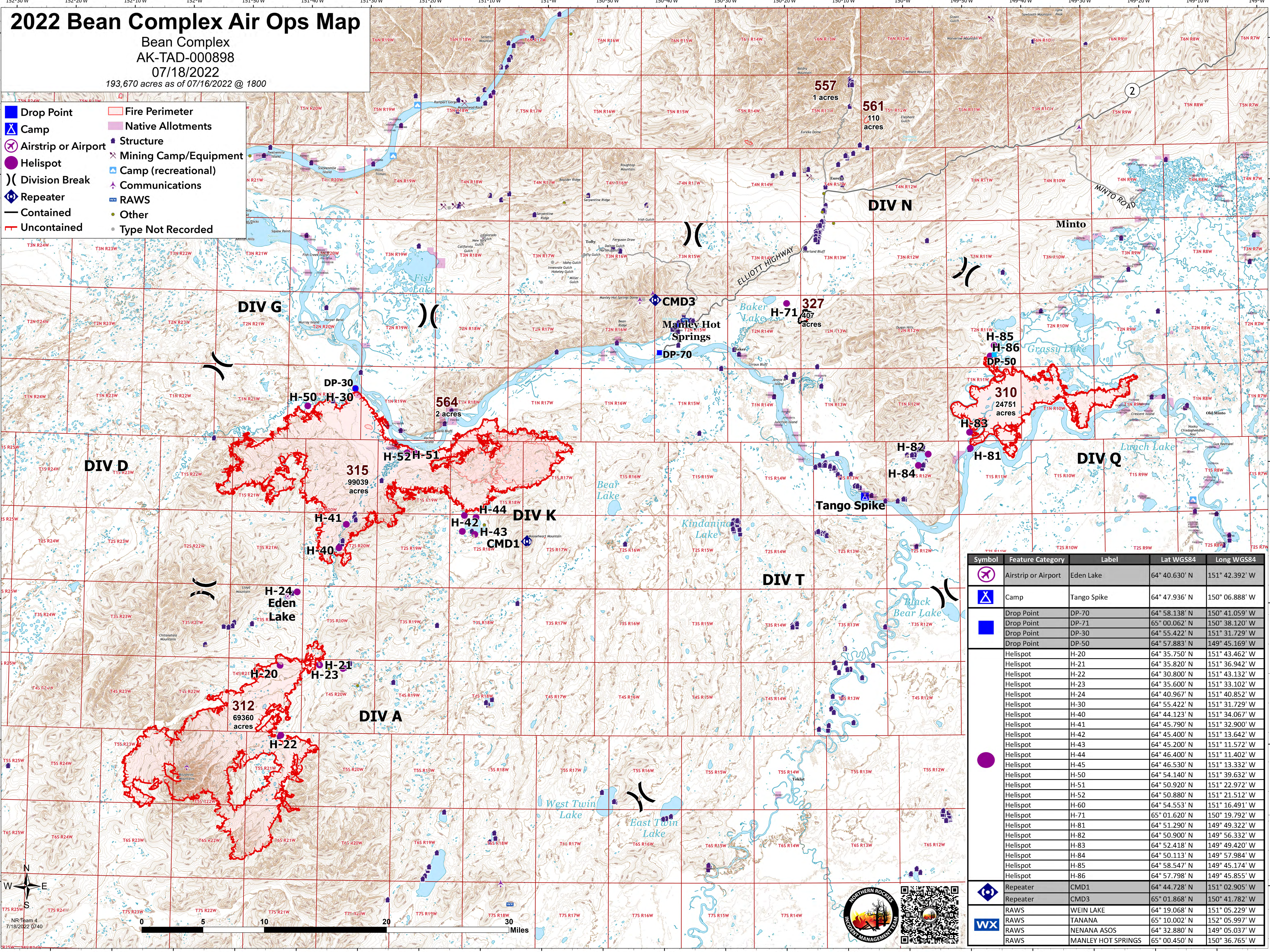


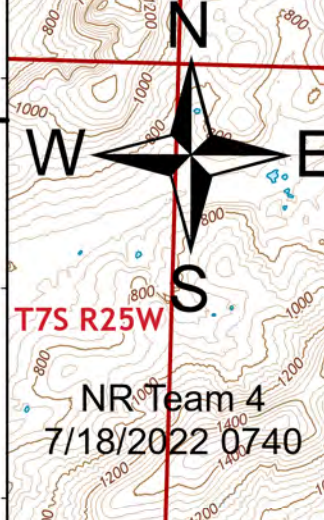
# 2022 Bean Complex Air Ops Map

Bean Complex  
AK-TAD-000898  
07/18/2022  
193,670 acres as of 07/16/2022 @ 1800

- Drop Point
- ▲ Camp
- ⊗ Airstrip or Airport
- Helispot
- ) Division Break
- ⬢ Repeater
- Contained
- - - Uncontained
- Fire Perimeter
- Native Allotments
- Structure
- ⊗ Mining Camp/Equipment
- ▲ Camp (recreational)
- ▲ Communications
- ⬢ RAWS
- Other
- Type Not Recorded



Symbol	Feature Category	Label	Lat WGS84	Long WGS84
<span style="color: purple;">⊗</span>	Airstrip or Airport	Eden Lake	64° 40.630' N	151° 42.392' W
<span style="color: blue;">▲</span>	Camp	Tango Spike	64° 47.936' N	150° 06.888' W
<span style="color: blue;">■</span>	Drop Point	DP-70	64° 58.138' N	150° 41.059' W
<span style="color: blue;">■</span>	Drop Point	DP-71	65° 00.062' N	150° 38.120' W
<span style="color: blue;">■</span>	Drop Point	DP-50	64° 55.422' N	151° 31.729' W
<span style="color: blue;">■</span>	Drop Point	DP-50	64° 57.883' N	149° 45.169' W
<span style="color: purple;">●</span>	Helispot	H-20	64° 35.750' N	151° 43.462' W
<span style="color: purple;">●</span>	Helispot	H-21	64° 35.820' N	151° 36.942' W
<span style="color: purple;">●</span>	Helispot	H-22	64° 30.800' N	151° 43.132' W
<span style="color: purple;">●</span>	Helispot	H-23	64° 35.600' N	151° 33.102' W
<span style="color: purple;">●</span>	Helispot	H-24	64° 40.967' N	151° 40.852' W
<span style="color: purple;">●</span>	Helispot	H-30	64° 55.422' N	151° 31.729' W
<span style="color: purple;">●</span>	Helispot	H-40	64° 44.123' N	151° 34.067' W
<span style="color: purple;">●</span>	Helispot	H-41	64° 45.790' N	151° 32.900' W
<span style="color: purple;">●</span>	Helispot	H-42	64° 45.400' N	151° 13.642' W
<span style="color: purple;">●</span>	Helispot	H-43	64° 45.200' N	151° 11.572' W
<span style="color: purple;">●</span>	Helispot	H-44	64° 46.400' N	151° 11.402' W
<span style="color: purple;">●</span>	Helispot	H-45	64° 46.530' N	151° 13.332' W
<span style="color: purple;">●</span>	Helispot	H-50	64° 54.140' N	151° 39.632' W
<span style="color: purple;">●</span>	Helispot	H-51	64° 50.920' N	151° 22.972' W
<span style="color: purple;">●</span>	Helispot	H-52	64° 50.880' N	151° 21.512' W
<span style="color: purple;">●</span>	Helispot	H-60	64° 54.553' N	151° 16.491' W
<span style="color: purple;">●</span>	Helispot	H-71	65° 01.620' N	150° 19.792' W
<span style="color: purple;">●</span>	Helispot	H-81	64° 51.290' N	149° 49.322' W
<span style="color: purple;">●</span>	Helispot	H-82	64° 50.900' N	149° 56.332' W
<span style="color: purple;">●</span>	Helispot	H-83	64° 52.418' N	149° 49.420' W
<span style="color: purple;">●</span>	Helispot	H-84	64° 50.113' N	149° 57.984' W
<span style="color: purple;">●</span>	Helispot	H-85	64° 58.547' N	149° 45.174' W
<span style="color: purple;">●</span>	Helispot	H-86	64° 57.798' N	149° 45.855' W
<span style="color: blue;">⬢</span>	Repeater	CMD1	64° 44.728' N	151° 02.905' W
<span style="color: blue;">⬢</span>	Repeater	CMD3	65° 01.868' N	150° 41.782' W
<span style="color: blue;">WX</span>	RAWS	WEIN LAKE	64° 19.068' N	151° 05.229' W
<span style="color: blue;">WX</span>	RAWS	TANANA	65° 10.002' N	152° 05.997' W
<span style="color: blue;">WX</span>	RAWS	NENANA ASOS	64° 32.880' N	149° 05.037' W
<span style="color: blue;">WX</span>	RAWS	MANLEY HOT SPRINGS	65° 00.450' N	150° 36.765' W



NR Team 4  
7/18/2022 0740

