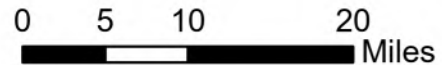


Incident Overview Map

Bean Complex
 AK-TAD-000898
 7/23/2022
 194,503 Acres from IR and Imagery
 @ 07/23 0145

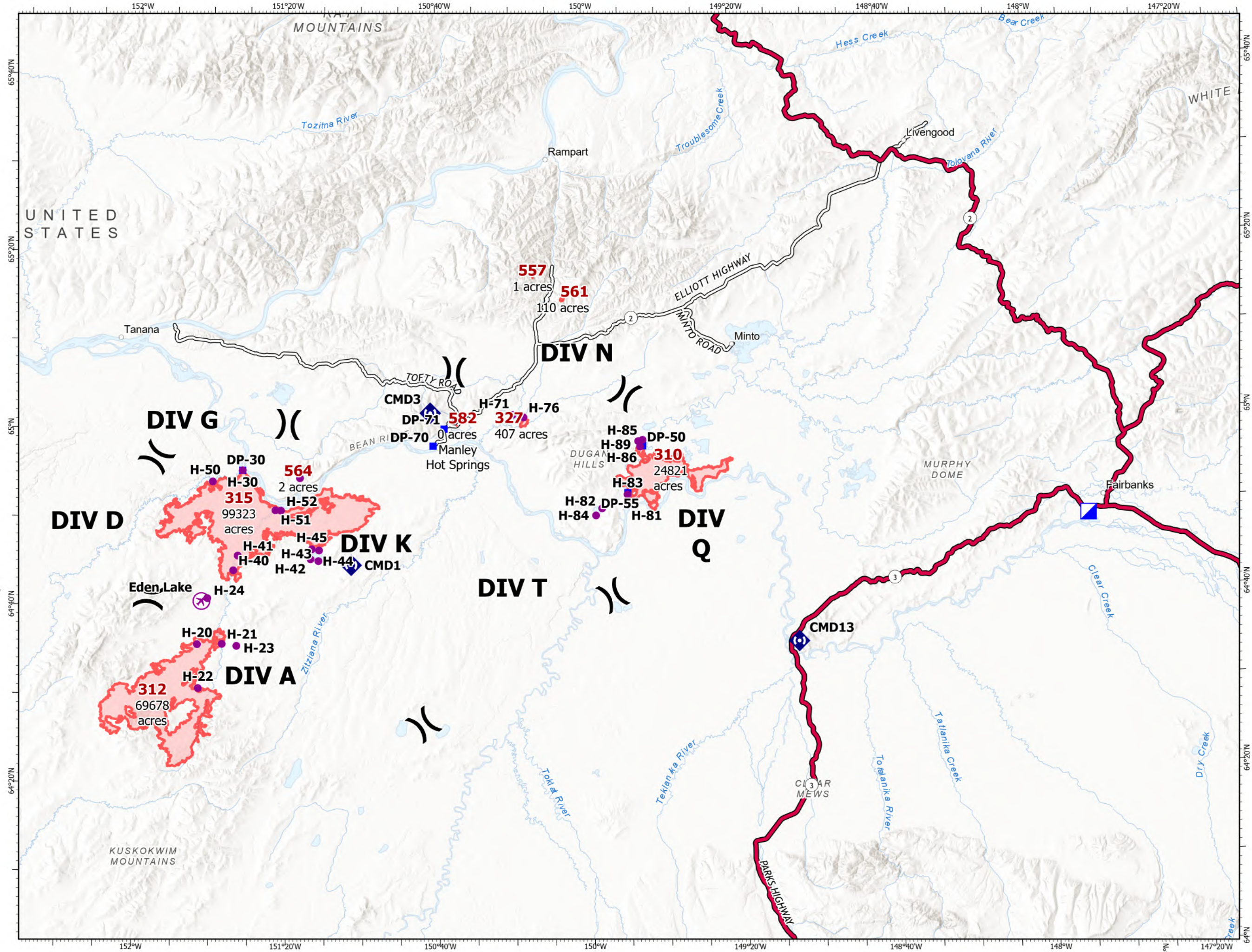
-  Wildfire Daily Fire Perimeter
-  Airstrip or Airport
-  Helispot
-  Division Break
-  Incident Command Post
-  Drop Point
-  Repeater
-  Paved Road
-  Dirt Road

NOTE:
 - Cell/Radio reception is poor
 - For those with rental vehicles, check rental agreements, as roads are rough





NR Team 4
 7/23/2022 0826



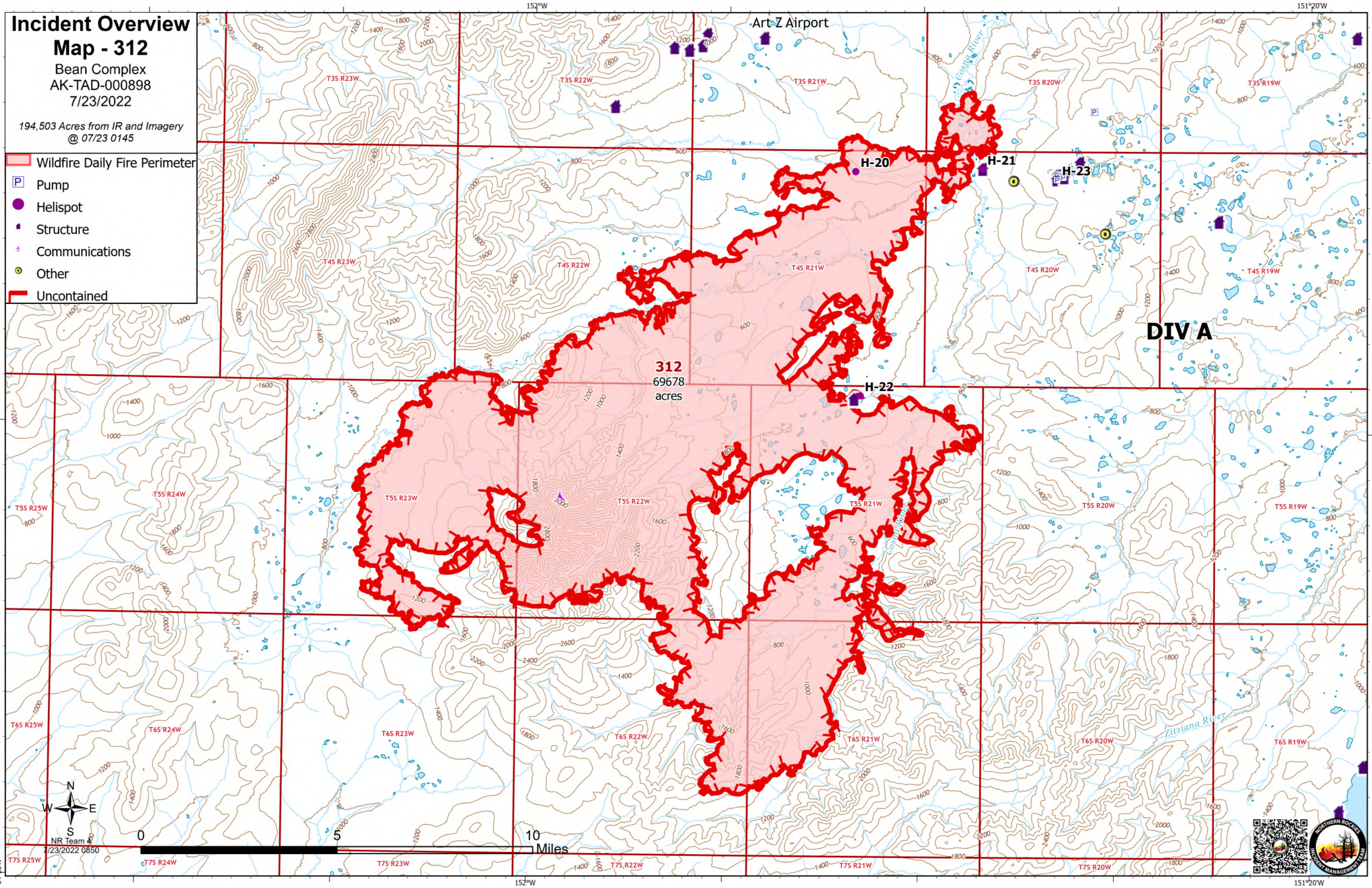
Incident Overview

Map - 312

Bean Complex
AK-TAD-000898
7/23/2022

194,503 Acres from IR and Imagery
@ 07/23 0145

-  Wildfire Daily Fire Perimeter
-  Pump
-  Helispot
-  Structure
-  Communications
-  Other
-  Uncontained



64°20'N

152°W

151°20'W

NR Team 4
7/23/2022 0850



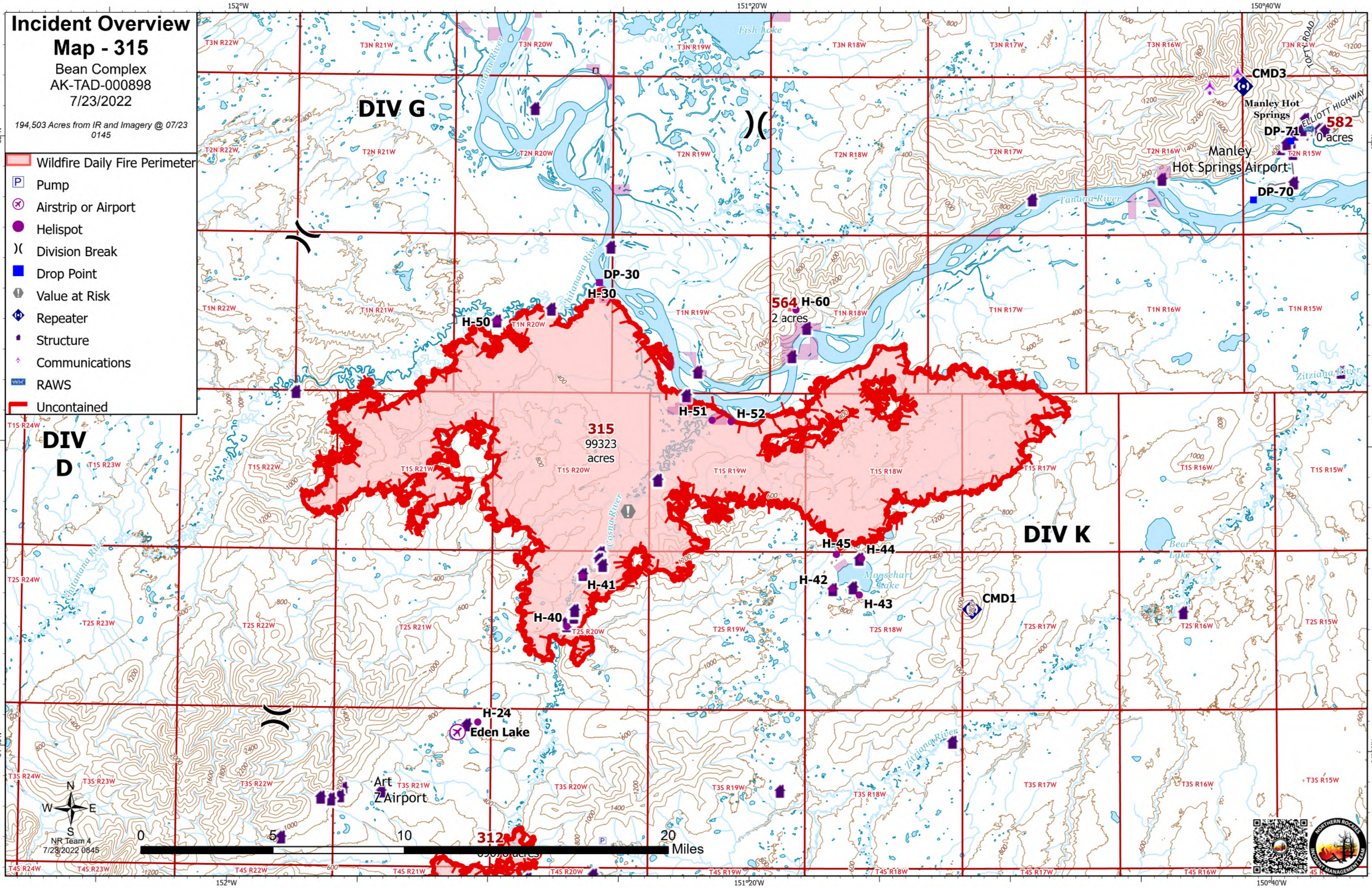
Incident Overview

Map - 315

Bean Complex
AK-TAD-000898
7/23/2022

194,503 Acres from IR and Imagery @ 07/23
0145

- Wildfire Daily Fire Perimeter
- Pump
- Airstrip or Airport
- Helispot
- Division Break
- Drop Point
- Value at Risk
- Repeater
- Structure
- Communications
- RAWS
- Uncontained



NR Team 4
7/23/2022 0845

0 10 20 Miles



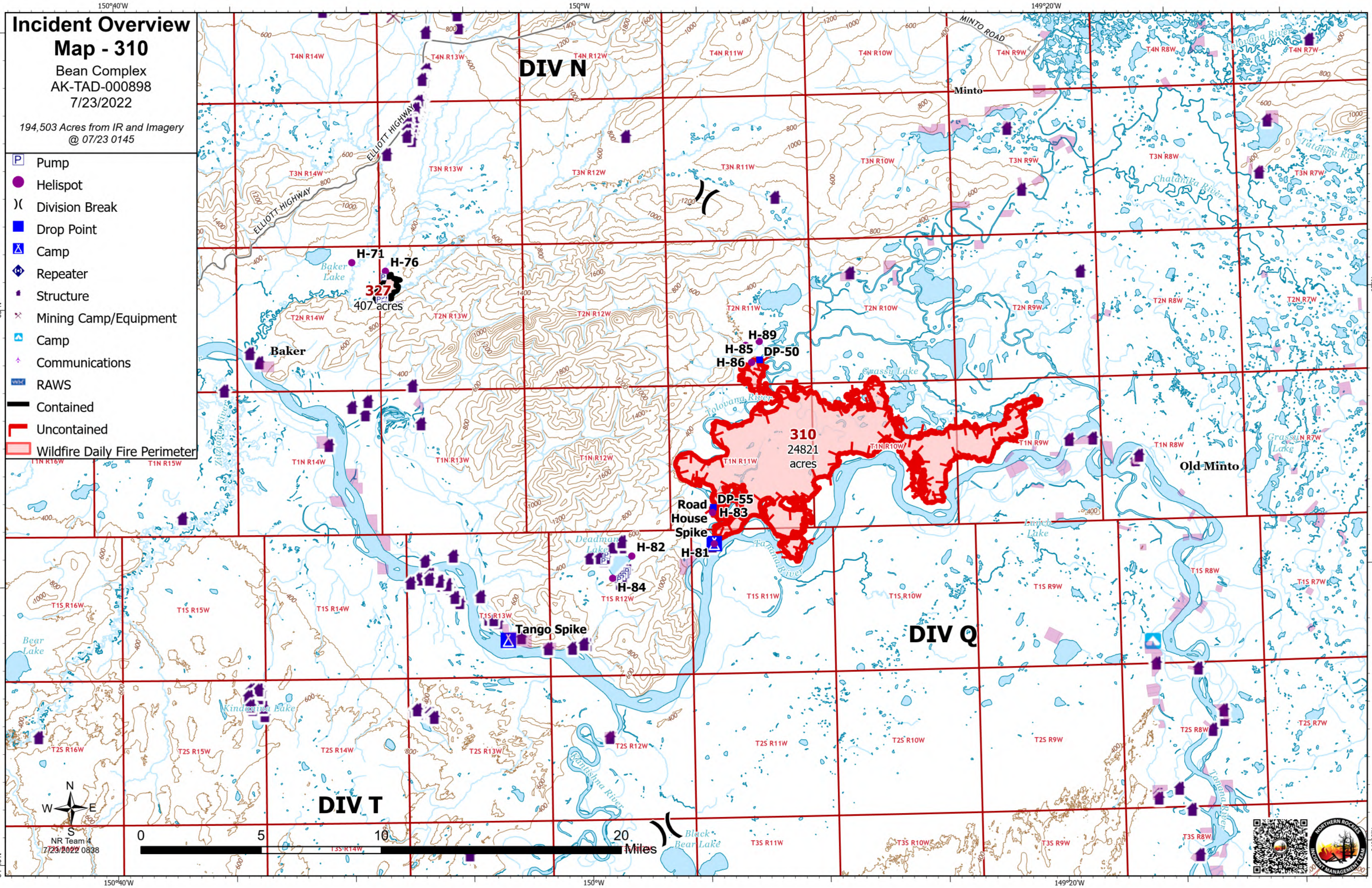
Incident Overview

Map - 310

Bean Complex
AK-TAD-000898
7/23/2022

194,503 Acres from IR and Imagery
© 07/23 0145

- Pump
- Helispot
- Division Break
- Drop Point
- Camp
- Repeater
- Structure
- Mining Camp/Equipment
- Camp
- Communications
- RAWS
- Contained
- Uncontained
- Wildfire Daily Fire Perimeter



NR Team 4
7/23/2022 0838

