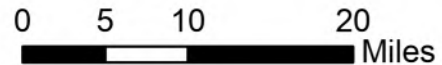


# Incident Overview Map

Bean Complex  
 AK-TAD-000898  
 7/24/2022  
 194,926 Acres from IR and Imagery  
 @ 07/24 0245

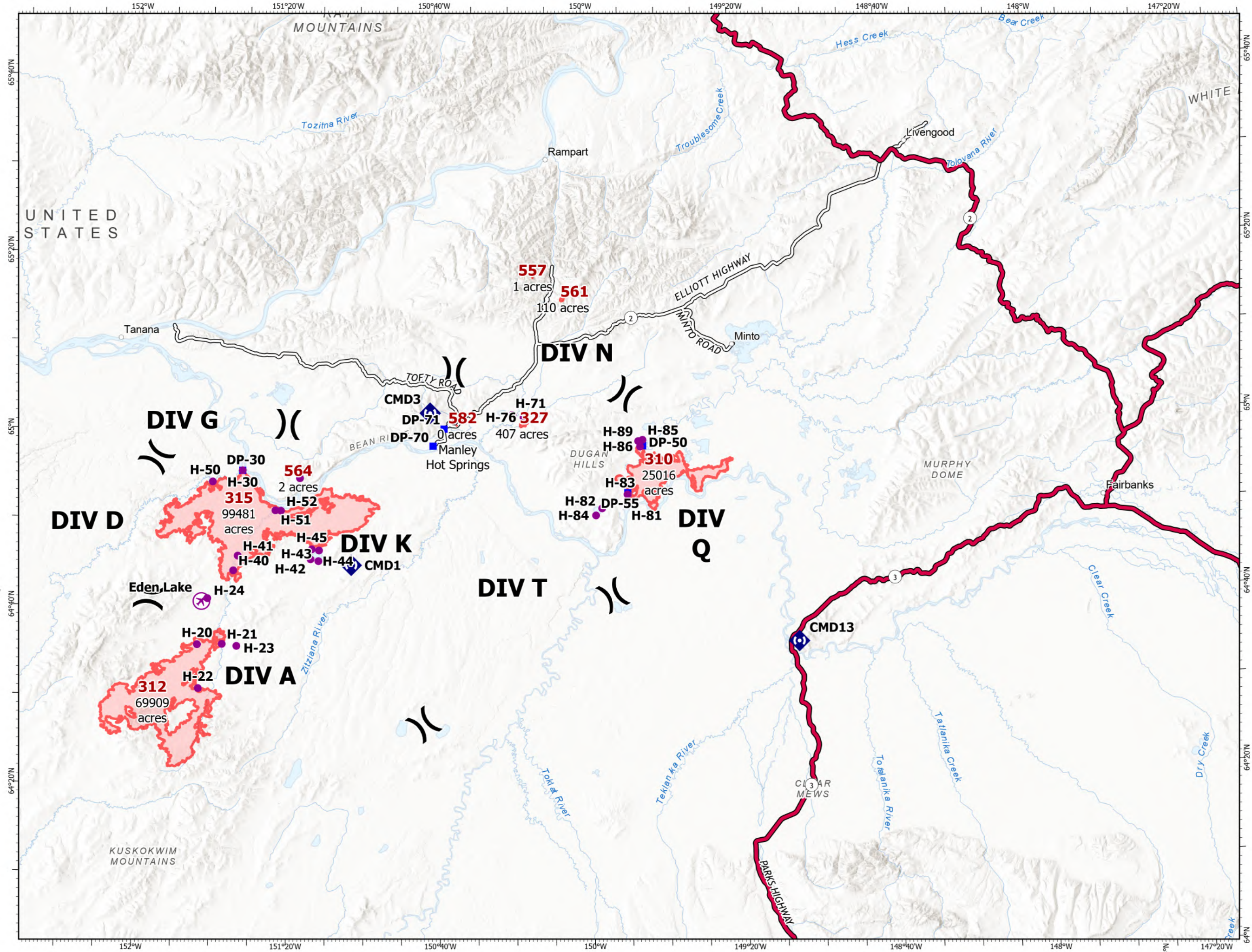
-  Wildfire Daily Fire Perimeter
-  Airstrip or Airport
-  Helispot
-  Division Break
-  Drop Point
-  Repeater
-  Paved Road
-  Dirt Road

NOTE:  
 - Cell/Radio reception is poor  
 - For those with rental vehicles, check rental agreements, as roads are rough





NR Team 4  
 7/24/2022 0813



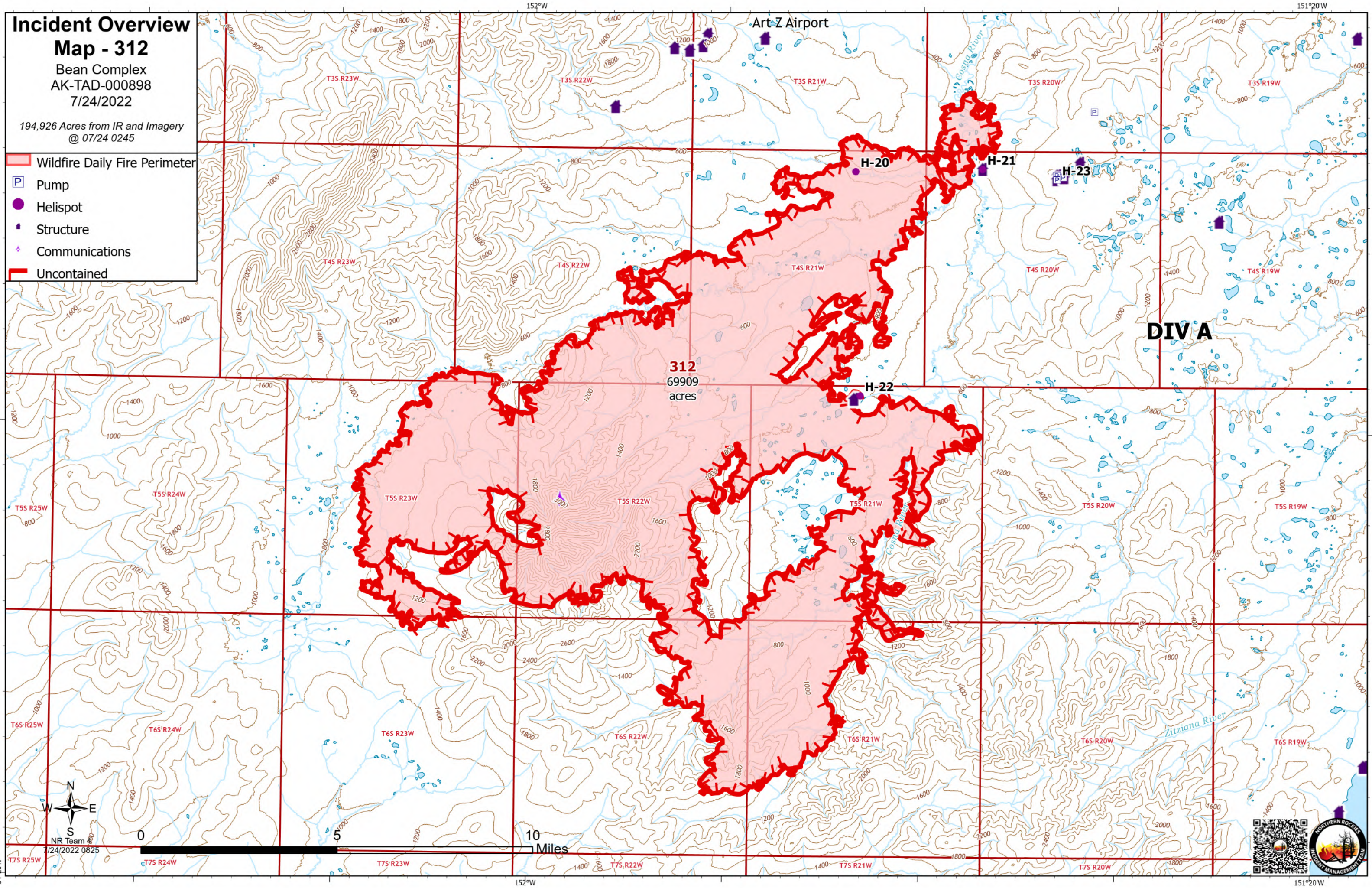
# Incident Overview

## Map - 312

Bean Complex  
AK-TAD-000898  
7/24/2022

194,926 Acres from IR and Imagery  
@ 07/24 0245

- Wildfire Daily Fire Perimeter
- Pump
- Helispot
- Structure
- Communications
- Uncontained



**DIV A**

**312**  
69909  
acres

64°20'N

152°W

151°20'W

NR Team 4  
7/24/2022 0825



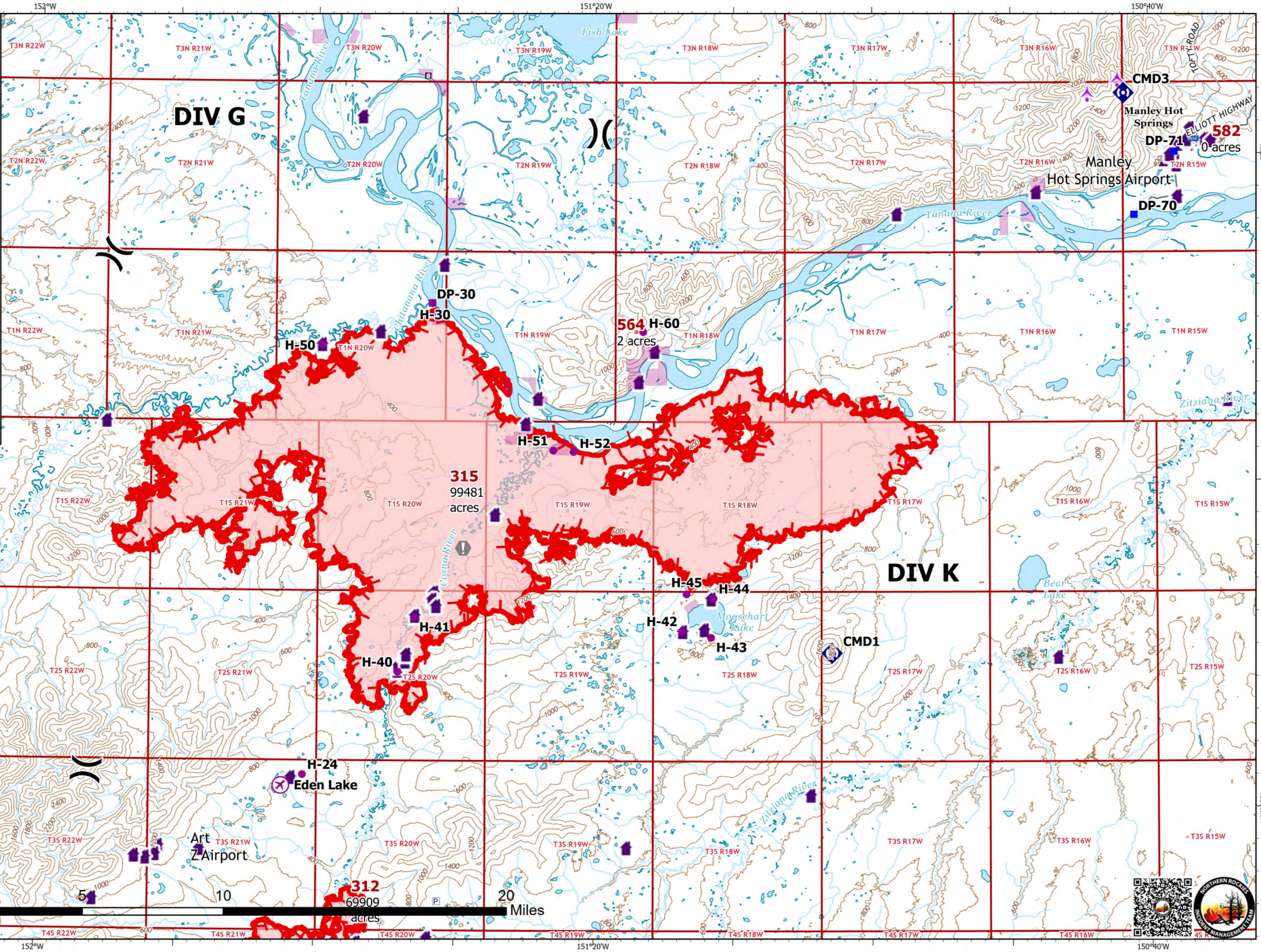
# Incident Overview

## Map - 315

Bean Complex  
AK-TAD-000898  
7/24/2022

194,926 Acres from IR and Imagery @ 07/24 0245

- Wildfire Daily Fire Perimeter
- Pump
- Airstrip or Airport
- Helispot
- Division Break
- Drop Point
- Value at Risk
- Repeater
- Structure
- Communications
- RAWS
- Uncontained



315  
99481  
acres

312  
69909  
acres

582  
0 acres

NR Team 4  
7/24/2022 0824



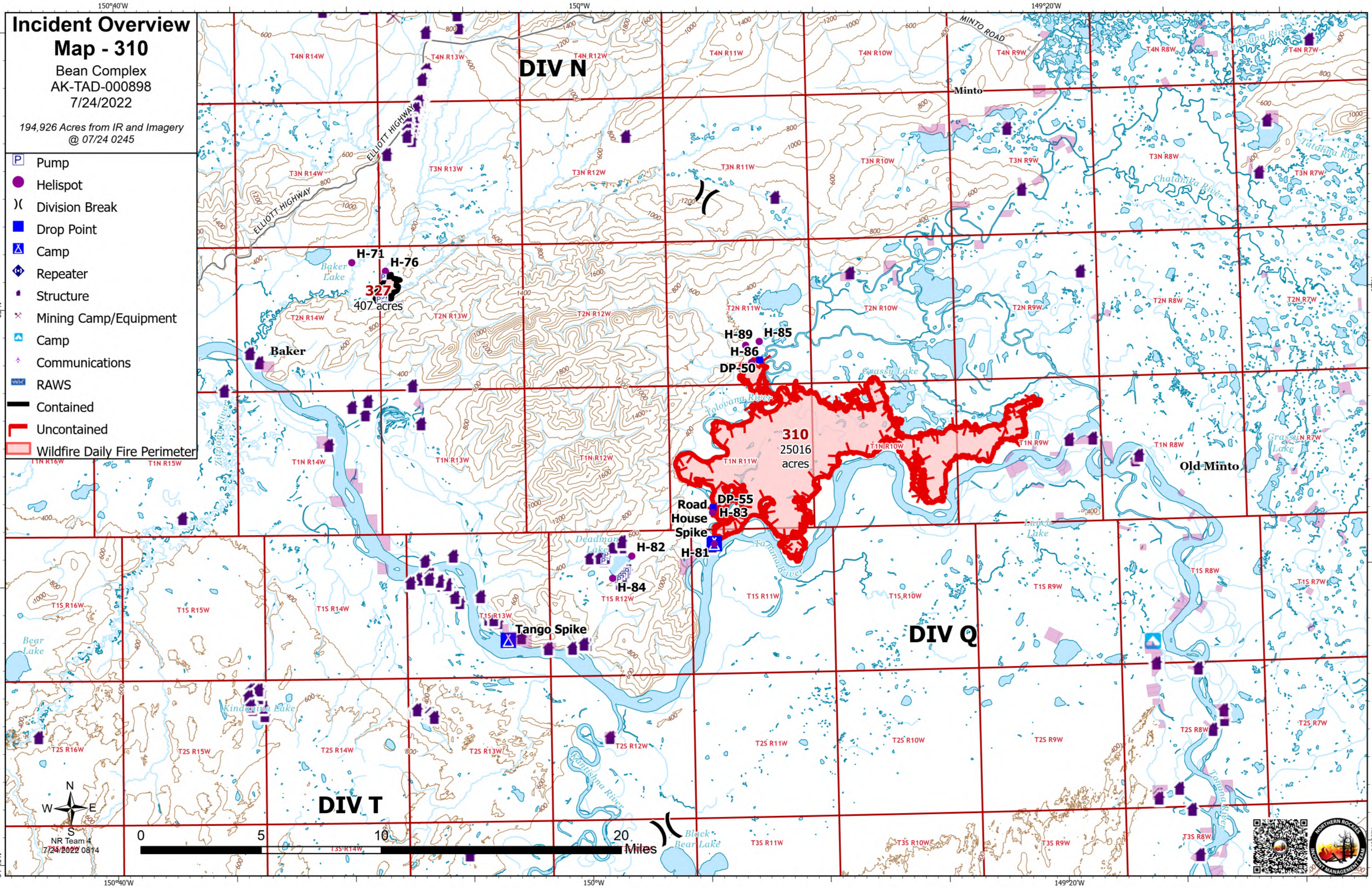
# Incident Overview

## Map - 310

Bean Complex  
AK-TAD-000898  
7/24/2022

194,926 Acres from IR and Imagery  
@ 07/24 0245

- Pump
- Helispot
- Division Break
- Drop Point
- Camp
- Repeater
- Structure
- Mining Camp/Equipment
- Camp
- Communications
- RAWS
- Contained
- Uncontained
- Wildfire Daily Fire Perimeter



NR Team 4  
7/24/2022 0814

