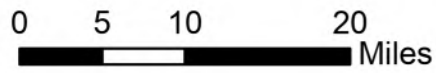


Incident Overview Map

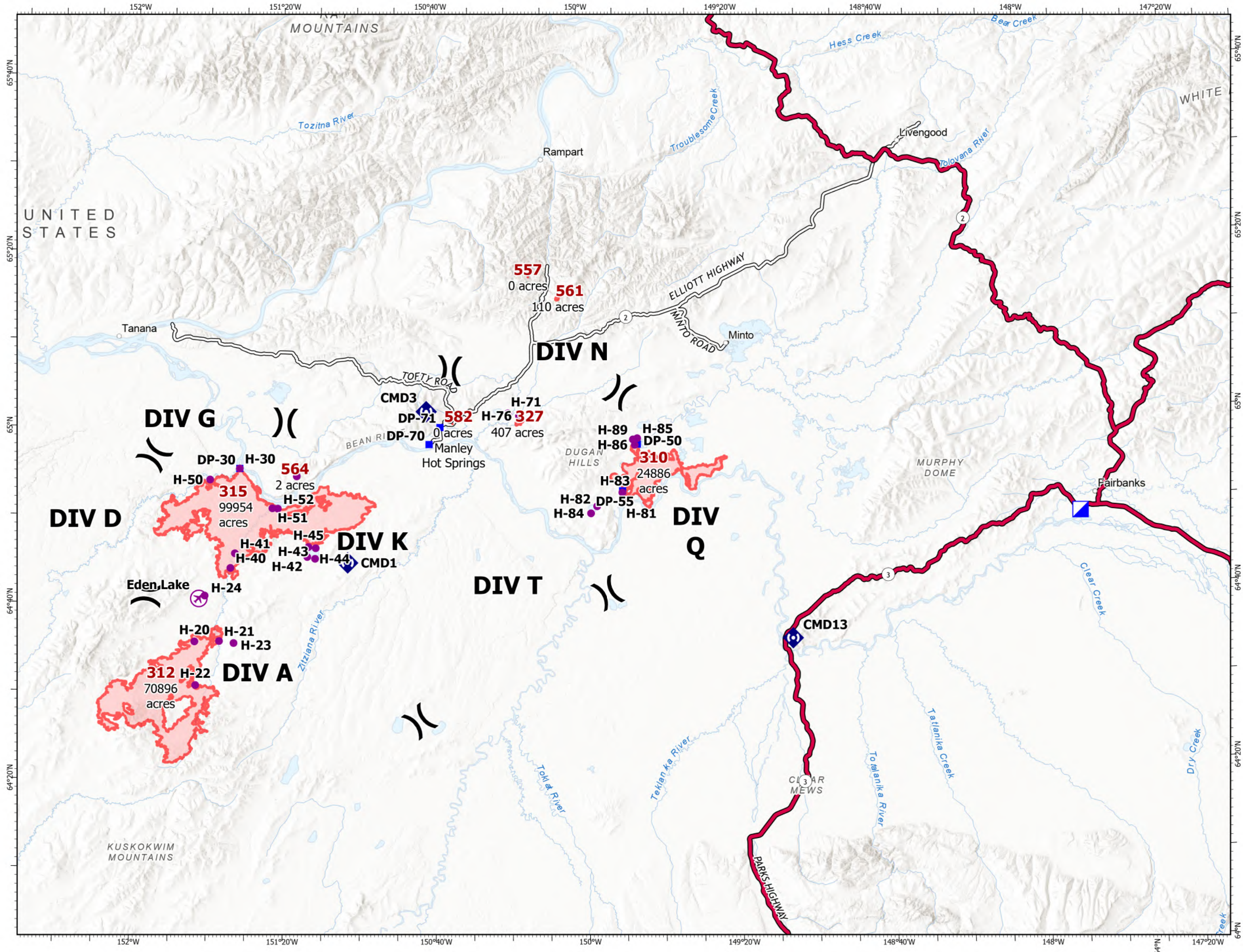
Bean Complex
 AK-TAD-000898
 7/25/2022
 196,254 Acres from IR and Imagery
 @ 07/25 0800

-  Wildfire Daily Fire Perimeter
-  Airstrip or Airport
-  Helispot
-  Division Break
-  Incident Command Post
-  Drop Point
-  Repeater
-  Paved Road
-  Dirt Road

NOTE:
 - Cell/Radio reception is poor
 - For those with rental vehicles, check rental agreements, as roads are rough



NR Team 4
 7/25/2022 0843



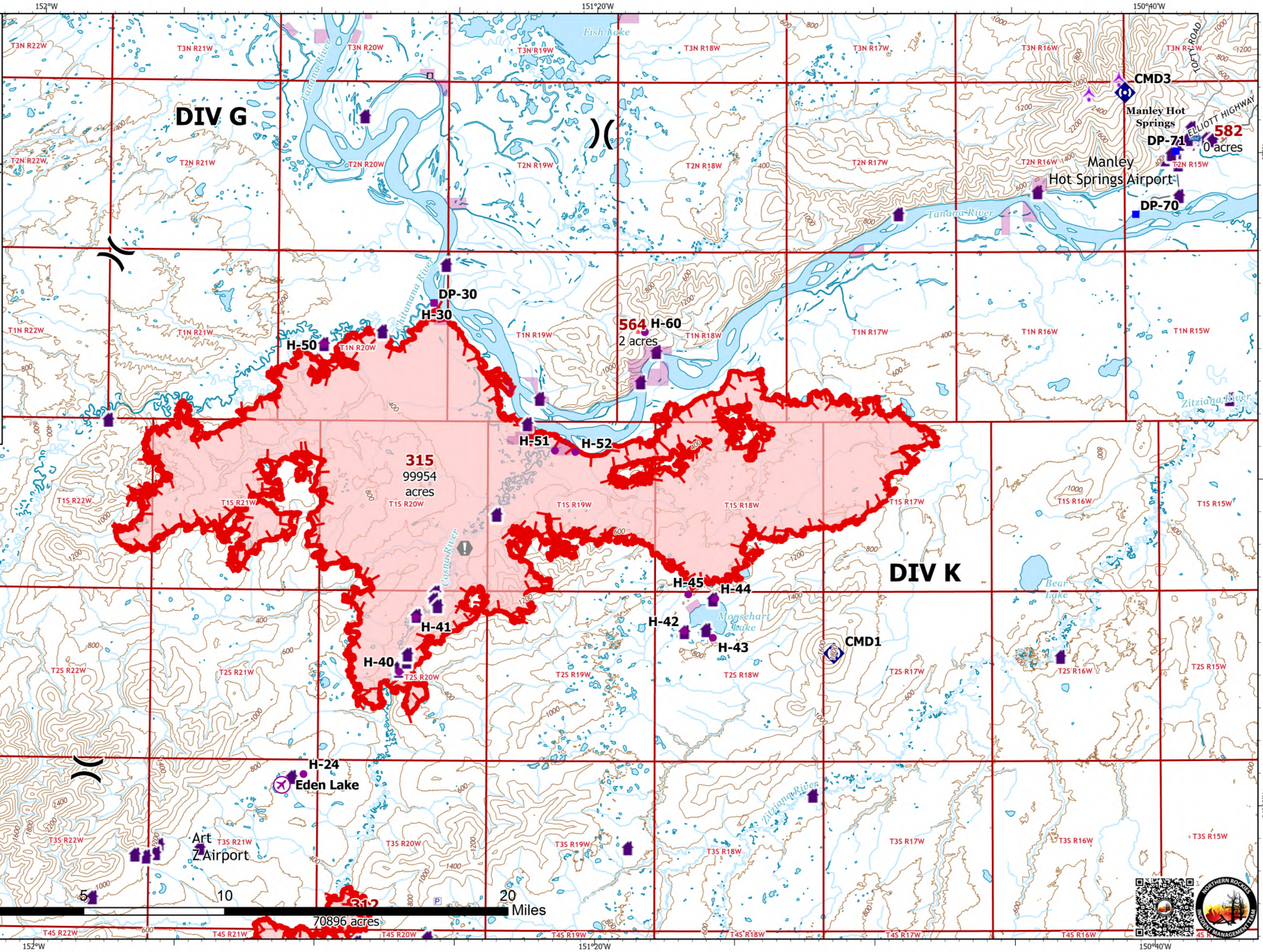
Incident Overview

Map - 315

Bean Complex
AK-TAD-000898
7/25/2022

196,254 Acres from IR and Imagery @ 07/25 0800

- Wildfire Daily Fire Perimeter
- Pump
- Airstrip or Airport
- Helispot
- Division Break
- Drop Point
- Value at Risk
- Repeater
- Structure
- Communications
- RAWS
- Uncontained



Compass rose showing North (N), South (S), East (E), and West (W).
Scale bar: 0, 5, 10, 20 Miles.
Text: NR Team 4, 7/25/2022 0846.



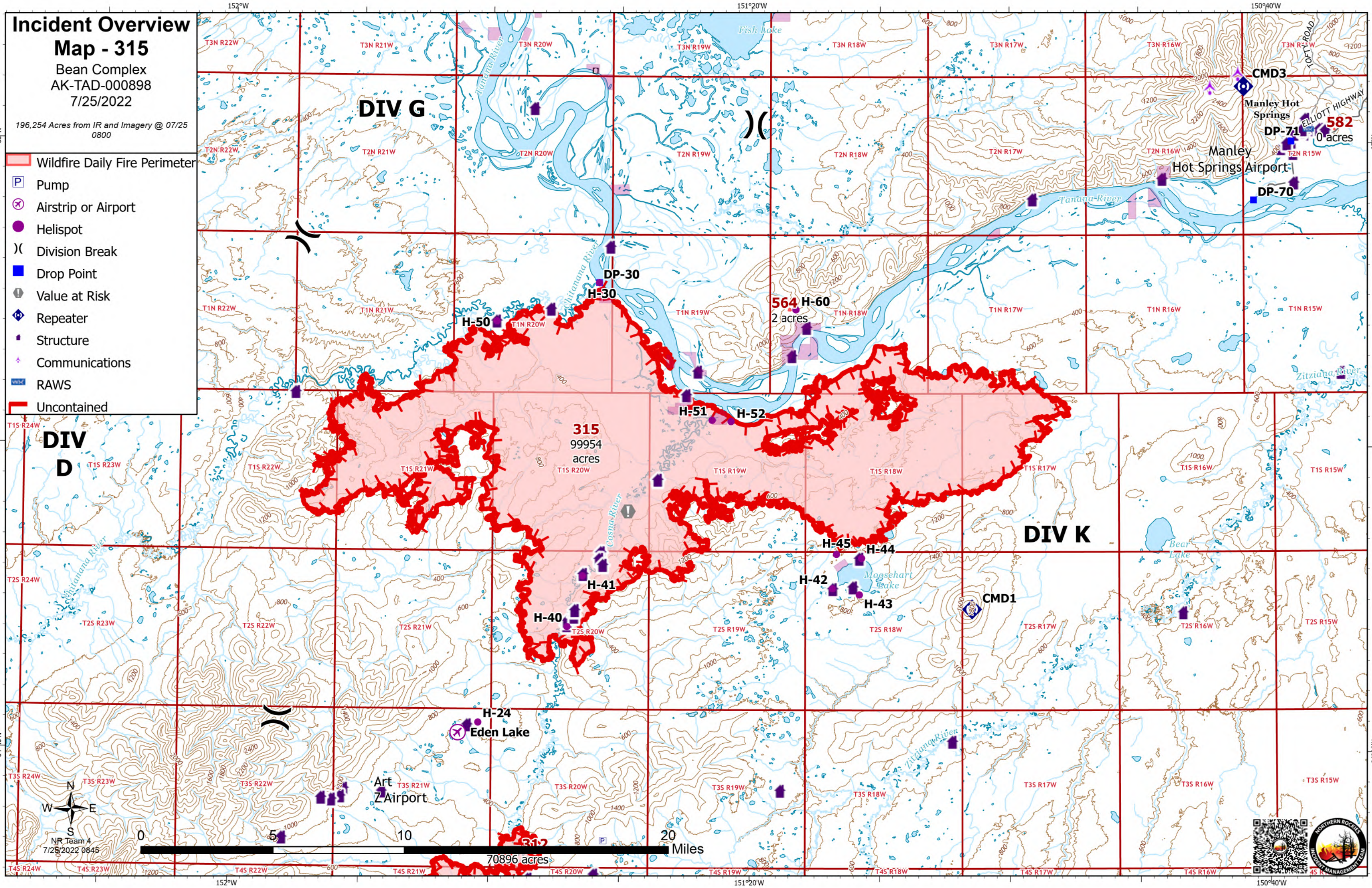
Incident Overview

Map - 315

Bean Complex
AK-TAD-000898
7/25/2022

196,254 Acres from IR and Imagery @ 07/25 0800

- Wildfire Daily Fire Perimeter
- Pump
- Airstrip or Airport
- Helispot
- Division Break
- Drop Point
- Value at Risk
- Repeater
- Structure
- Communications
- RAWS
- Uncontained



NR Team 4
7/25/2022 0845



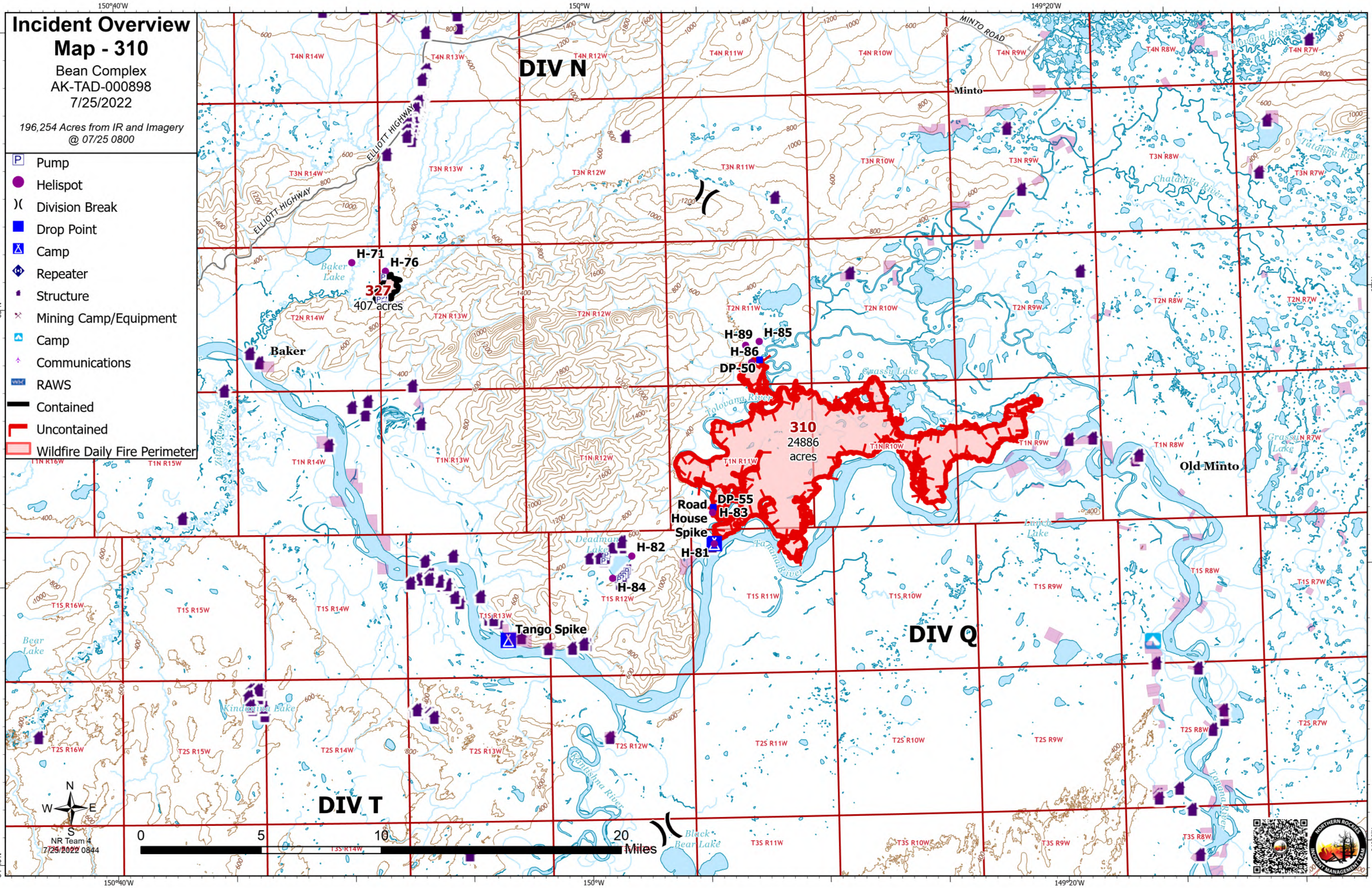
Incident Overview

Map - 310

Bean Complex
AK-TAD-000898
7/25/2022

196,254 Acres from IR and Imagery
@ 07/25 0800

- Pump
- Helispot
- Division Break
- Drop Point
- Camp
- Repeater
- Structure
- Mining Camp/Equipment
- Camp
- Communications
- RAWS
- Contained
- Uncontained
- Wildfire Daily Fire Perimeter



65°N

65°N

64°40'N

64°40'N

NR Team 4
7/25/2022 0844

