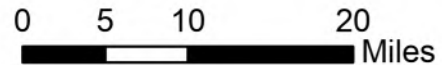


# Incident Overview Map

Bean Complex  
 AK-TAD-000898  
 7/27/2022  
 196,786 Acres from IR and Imagery  
 @ 07/25 1600

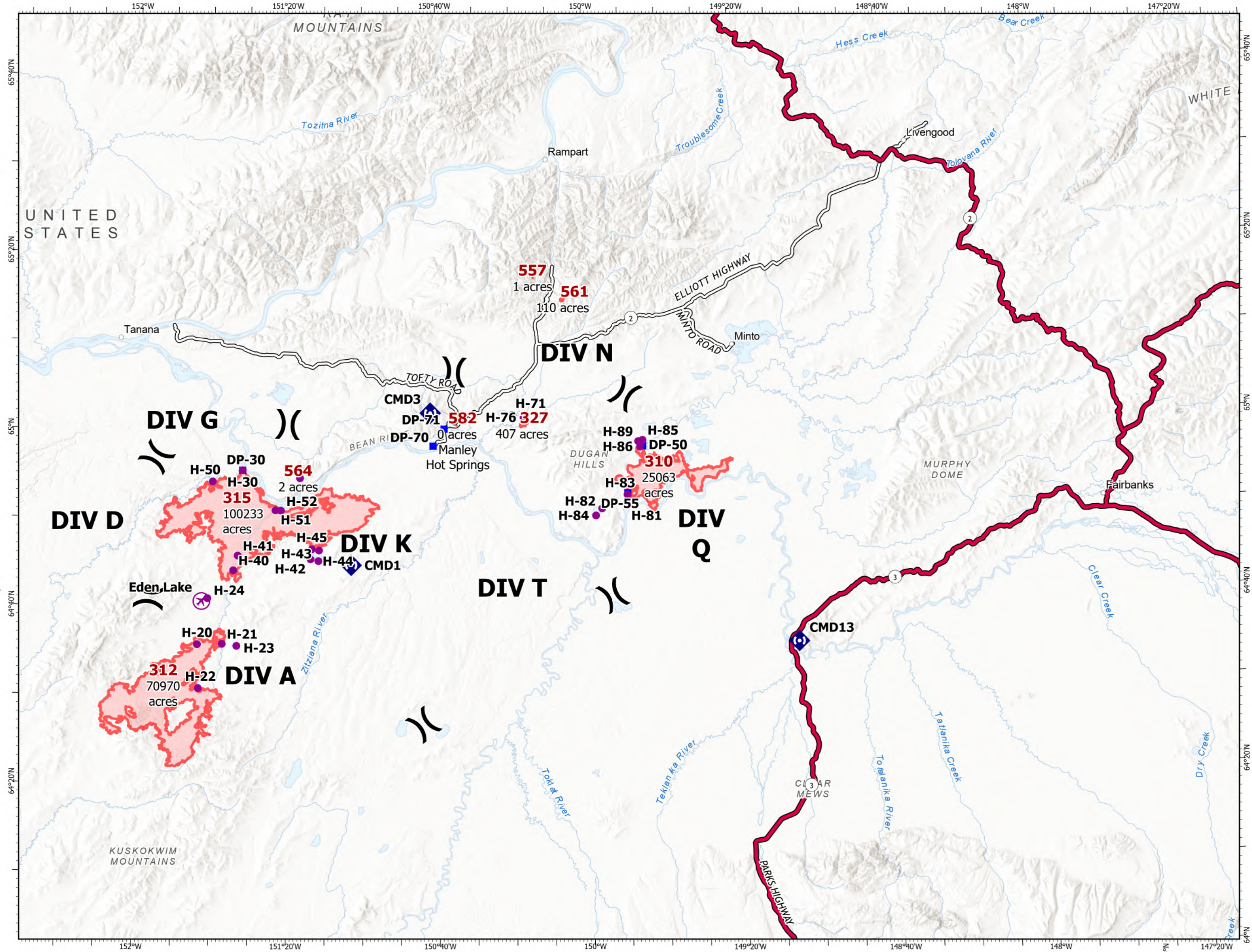
-  Wildfire Daily Fire Perimeter
-  Airstrip or Airport
-  Helispot
-  Division Break
-  Drop Point
-  Repeater
-  Paved Road
-  Dirt Road

NOTE:  
 - Cell/Radio reception is poor  
 - For those with rental vehicles, check rental agreements, as roads are rough





NR Team 4  
 7/27/2022 0656



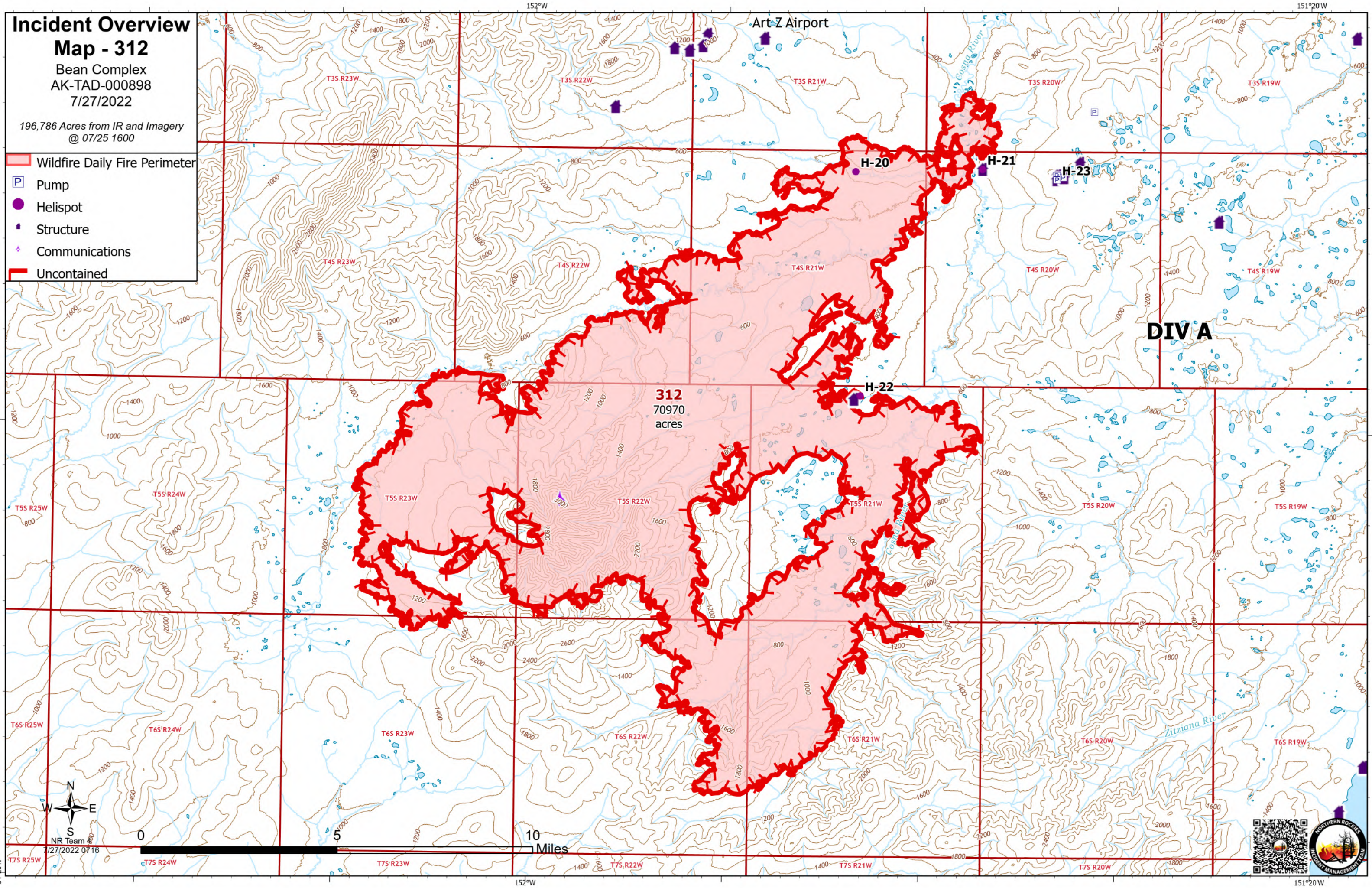
# Incident Overview

## Map - 312

Bean Complex  
AK-TAD-000898  
7/27/2022

196,786 Acres from IR and Imagery  
@ 07/25 1600

- Wildfire Daily Fire Perimeter
- Pump
- Helispot
- Structure
- Communications
- Uncontained



64°20'N

152°W

151°20'W

NR Team 4  
7/27/2022 07:16



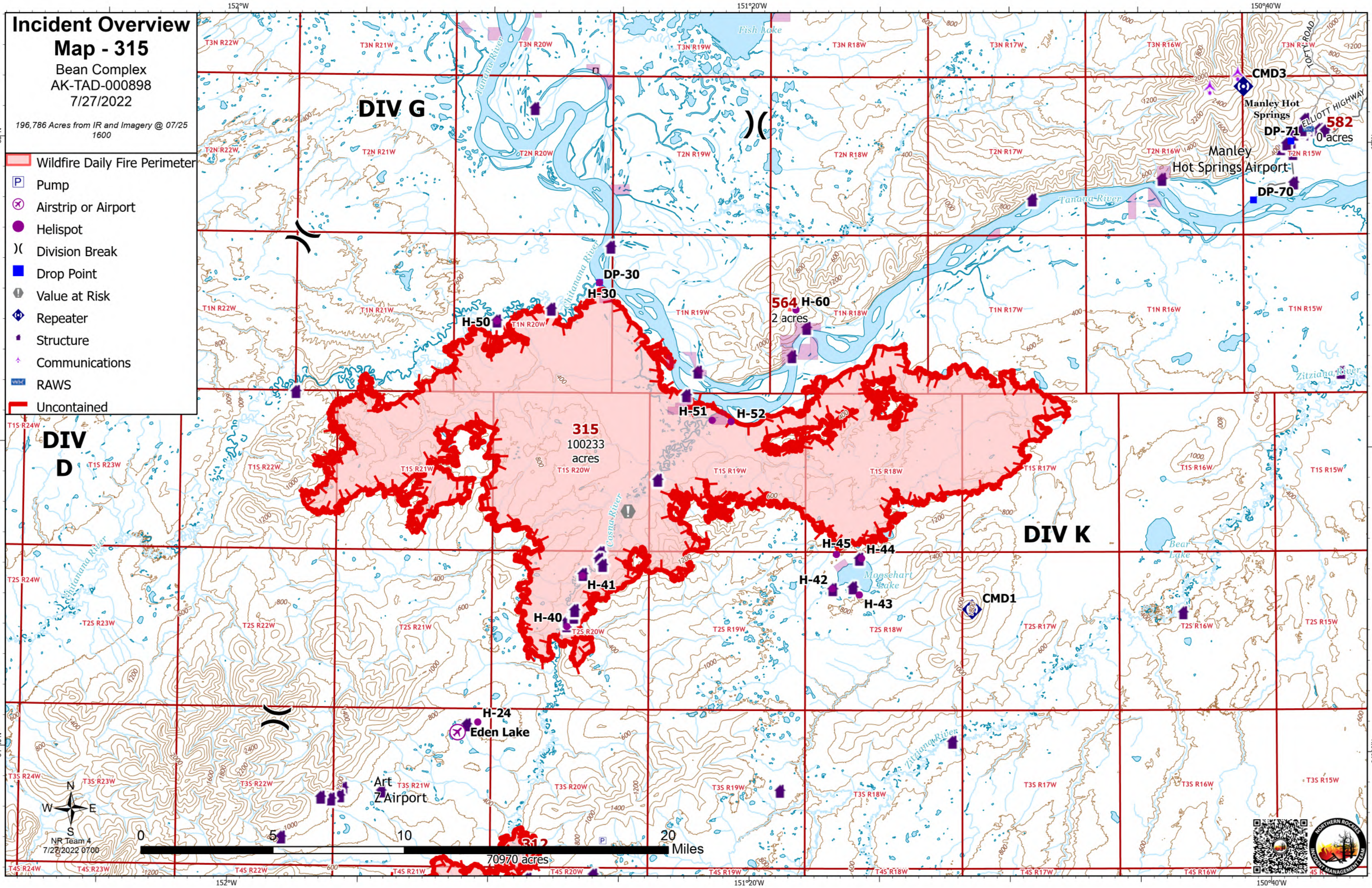
# Incident Overview

## Map - 315

Bean Complex  
AK-TAD-000898  
7/27/2022

196,786 Acres from IR and Imagery @ 07/25 1600

- Wildfire Daily Fire Perimeter
- Pump
- Airstrip or Airport
- Helispot
- Division Break
- Drop Point
- Value at Risk
- Repeater
- Structure
- Communications
- RAWS
- Uncontained



315  
100233  
acres

70970 acres



NR Team 4  
7/27/2022 0700

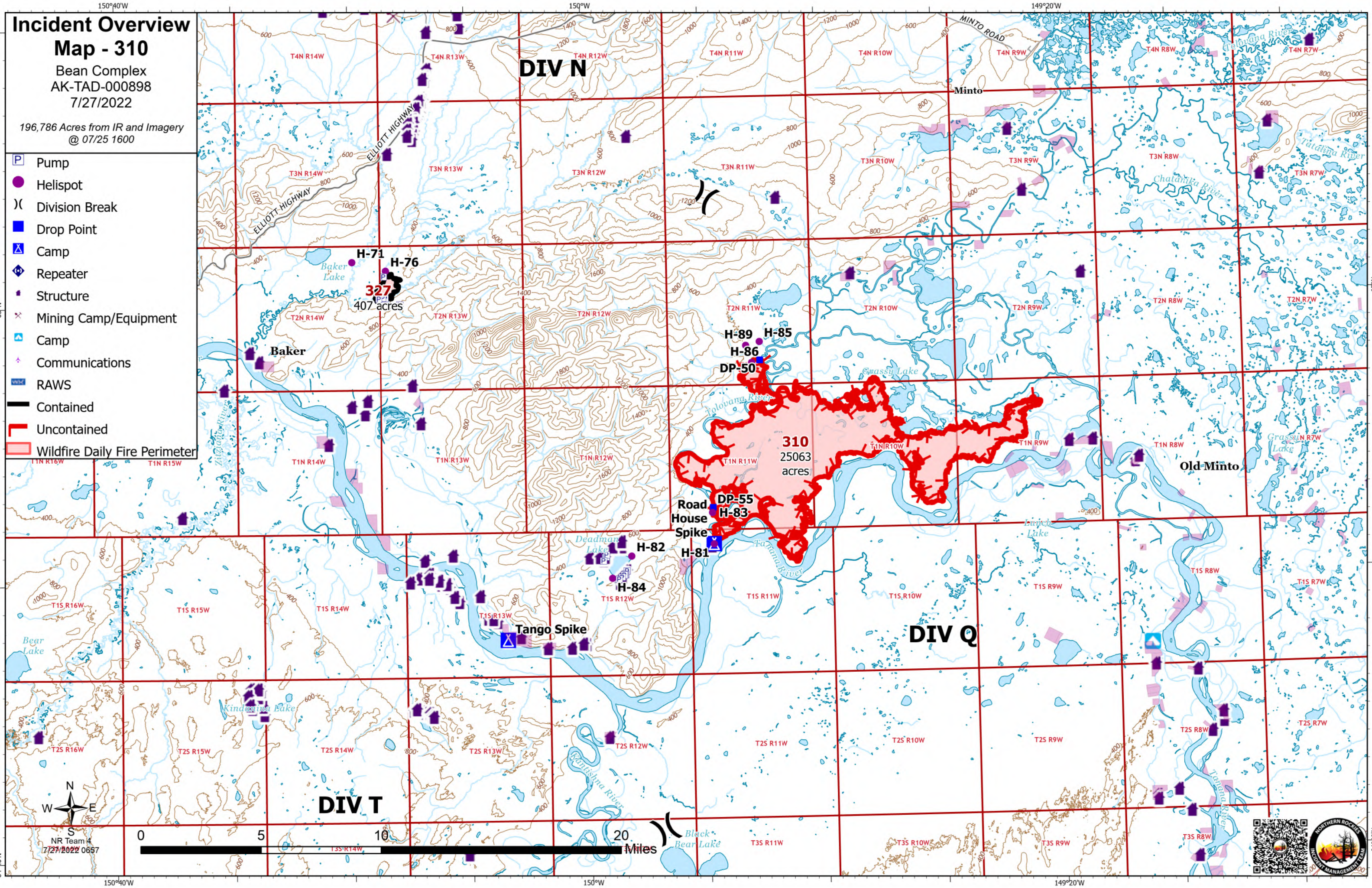
# Incident Overview

## Map - 310

Bean Complex  
AK-TAD-000898  
7/27/2022

196,786 Acres from IR and Imagery  
@ 07/25 1600

- Pump
- Helispot
- Division Break
- Drop Point
- Camp
- Repeater
- Structure
- Mining Camp/Equipment
- Camp
- Communications
- RAWS
- Contained
- Uncontained
- Wildfire Daily Fire Perimeter



65°N

65°N

64°40'N

64°40'N

NR Team 4  
7/27/2022 0657

