

Incident Overview Map

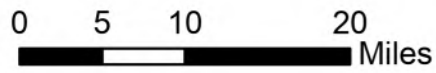
Bean Complex
AK-TAD-000898
7/30/2022

197,255 Acres from Imagery @
07/29 2200

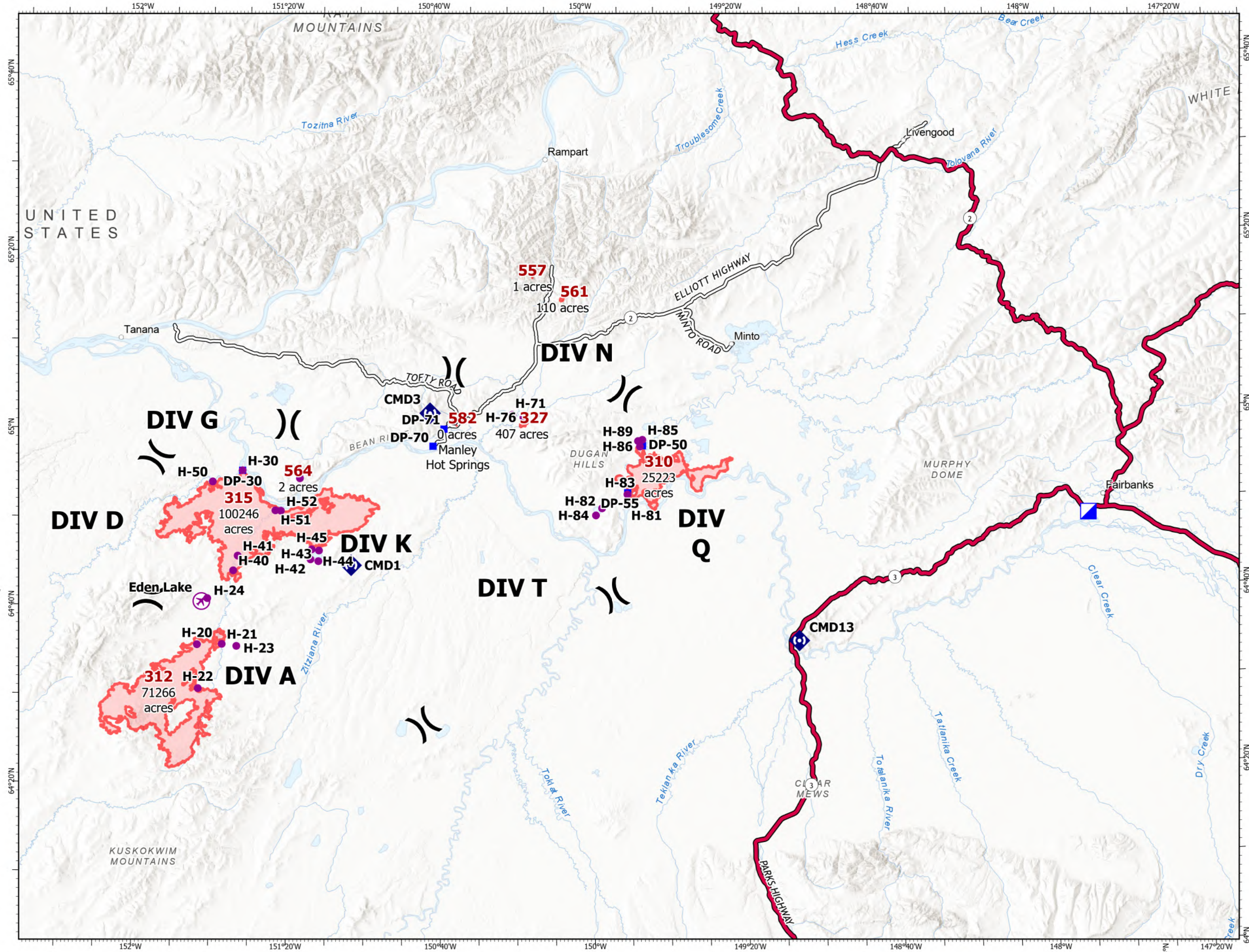
-  Wildfire Daily Fire Perimeter
-  Airstrip or Airport
-  Helispot
-  Division Break
-  Incident Command Post
-  Drop Point
-  Repeater
-  Paved Road
-  Dirt Road

NOTE:
- Cell/Radio reception is poor

- For those with rental vehicles, check rental agreements, as roads are rough



NR Team 4
7/30/2022 0807









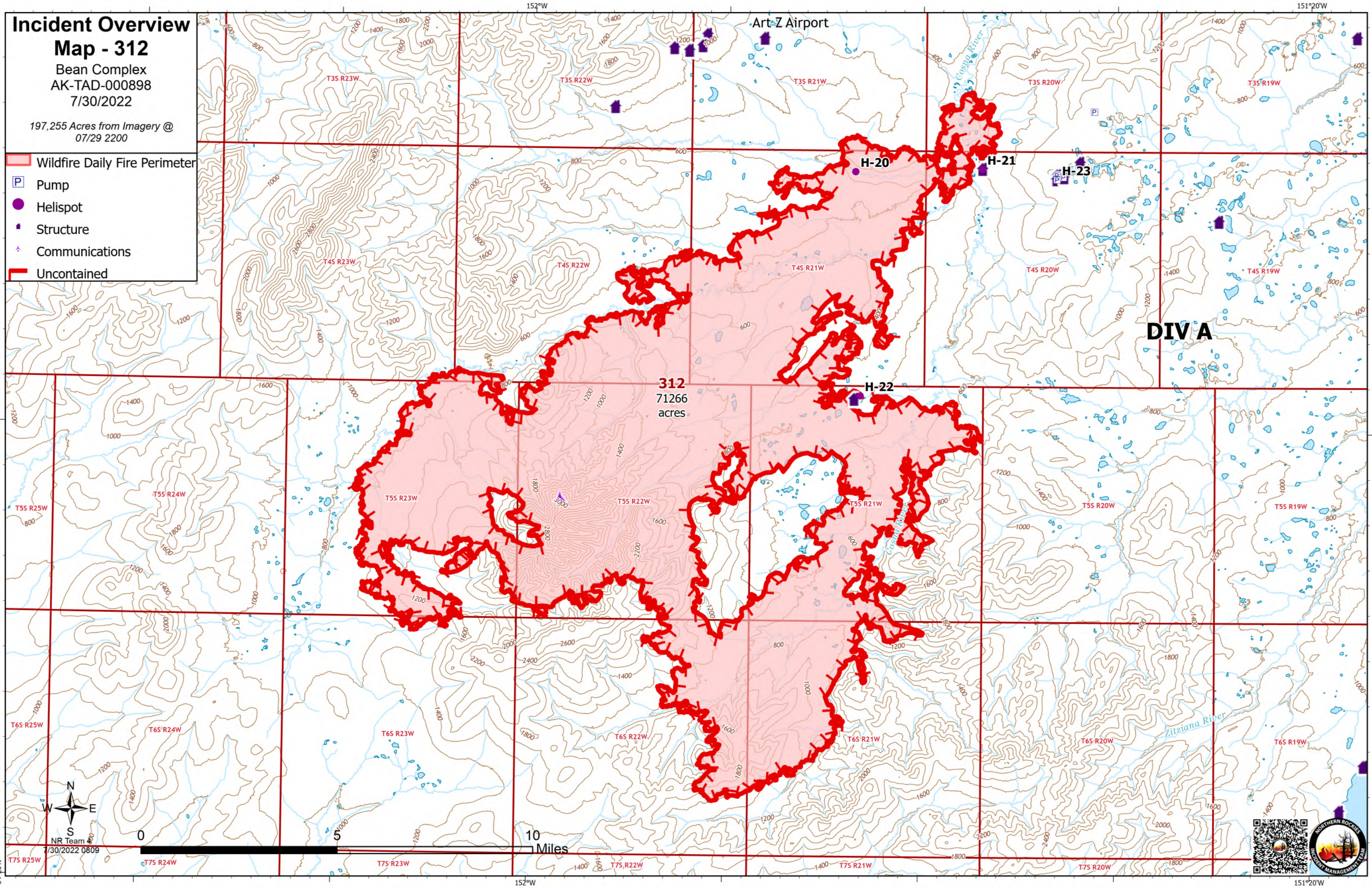
Incident Overview

Map - 312

Bean Complex
AK-TAD-000898
7/30/2022

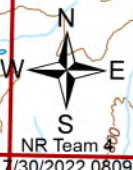
197,255 Acres from Imagery @
07/29 2200

-  Wildfire Daily Fire Perimeter
-  Pump
-  Helispot
-  Structure
-  Communications
-  Uncontained



DIV A

312
71266
acres



7/30/2022 0809



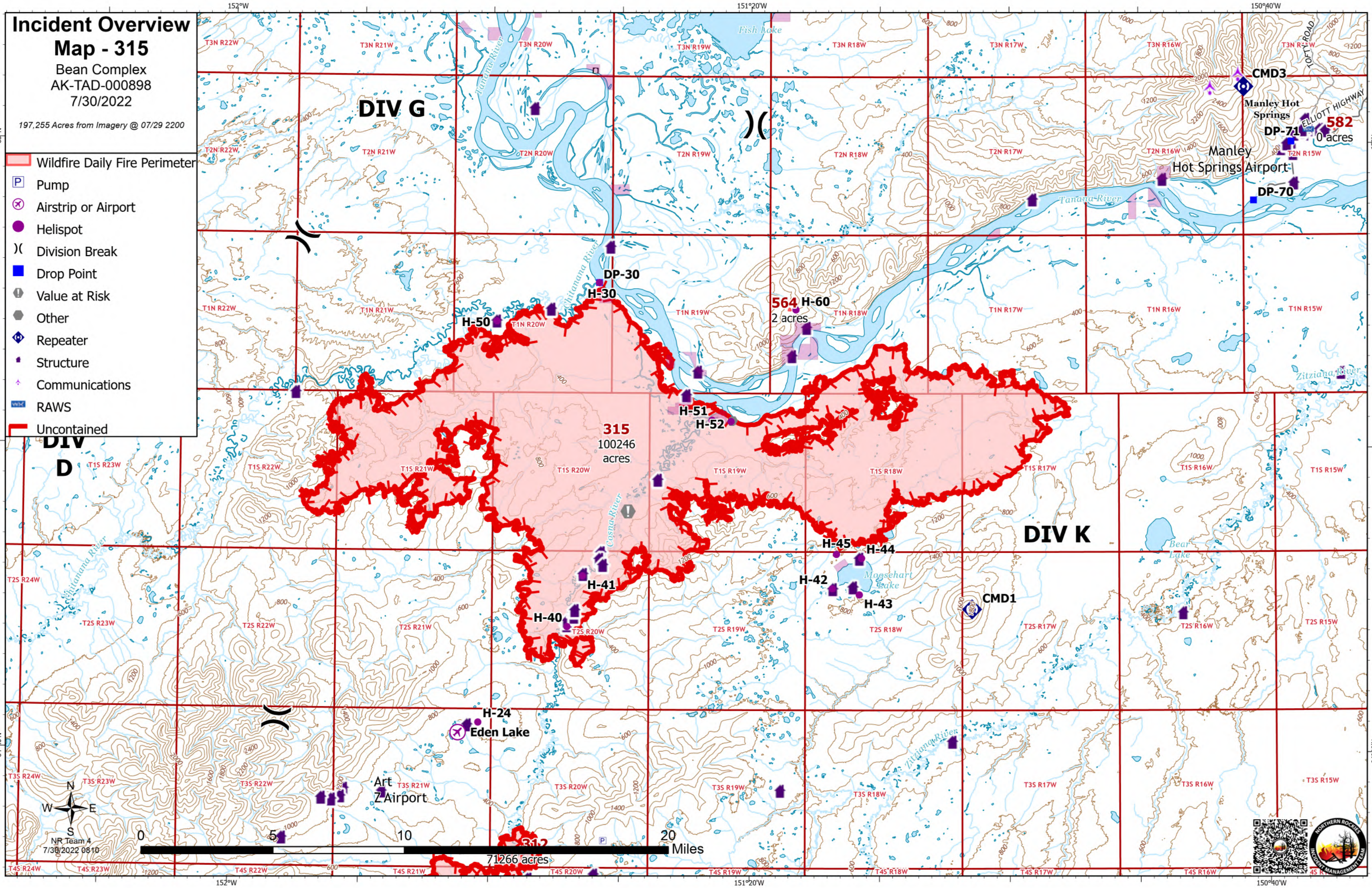
Incident Overview

Map - 315

Bean Complex
AK-TAD-000898
7/30/2022

197,255 Acres from Imagery @ 07/29 2200

- Wildfire Daily Fire Perimeter
- Pump
- Airstrip or Airport
- Helispot
- Division Break
- Drop Point
- Value at Risk
- Other
- Repeater
- Structure
- Communications
- RAWS
- Uncontained



Compass rose showing North (N), South (S), East (E), and West (W).
Scale bar: 0, 5, 10, 20 Miles.
Text: NR Team 4, 7/30/2022 0810.



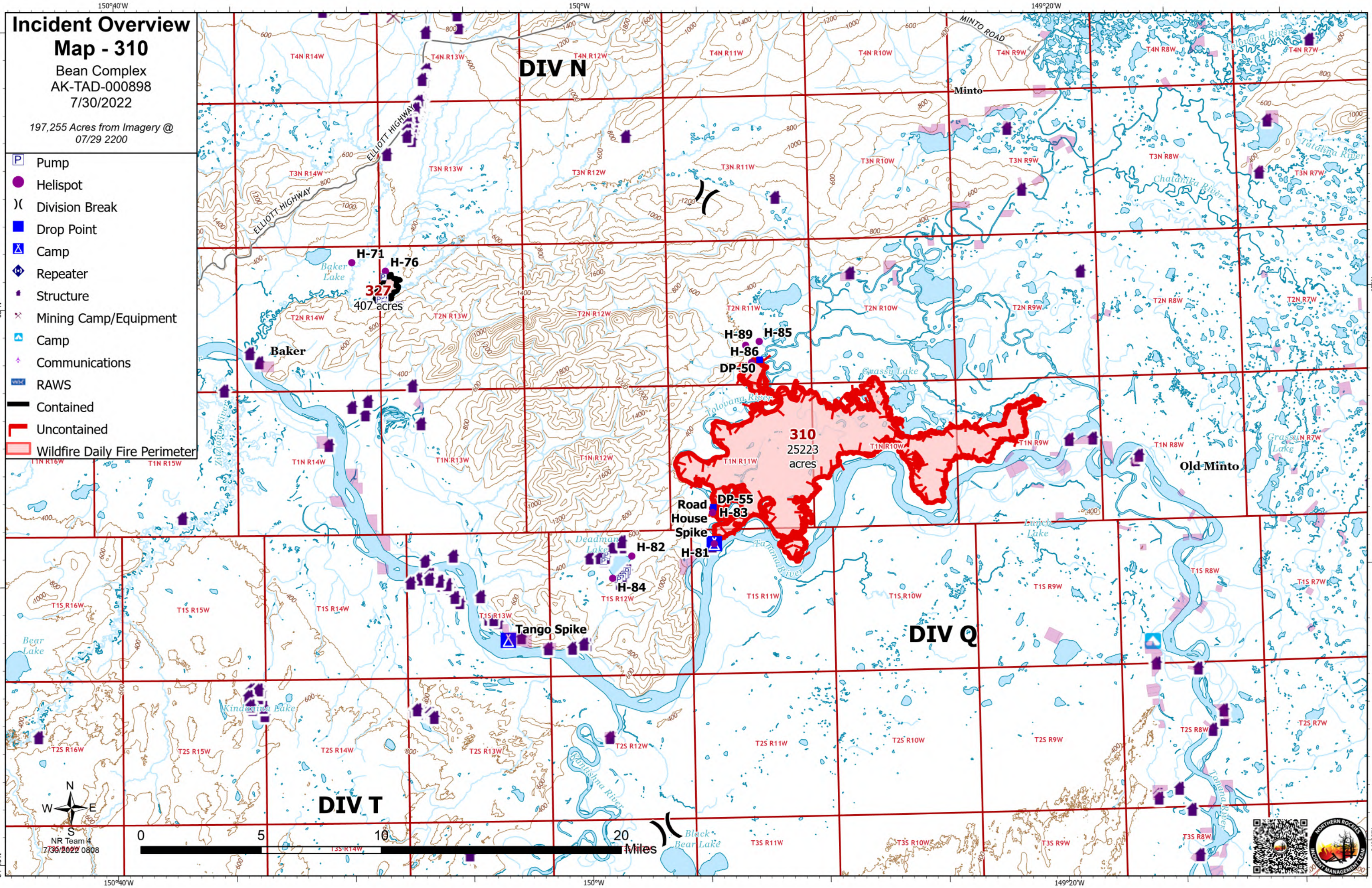
Incident Overview

Map - 310

Bean Complex
AK-TAD-000898
7/30/2022

197,255 Acres from Imagery @
07/29 2200

- Pump
- Helispot
- Division Break
- Drop Point
- Camp
- Repeater
- Structure
- Mining Camp/Equipment
- Camp
- Communications
- RAWS
- Contained
- Uncontained
- Wildfire Daily Fire Perimeter



65°N

65°N

64°40'N

64°40'N

150°40'W

150°W

149°20'W

150°40'W

150°W

149°20'W

NR Team 4
7/30/2022 0808

