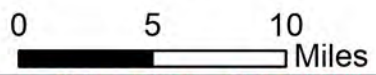


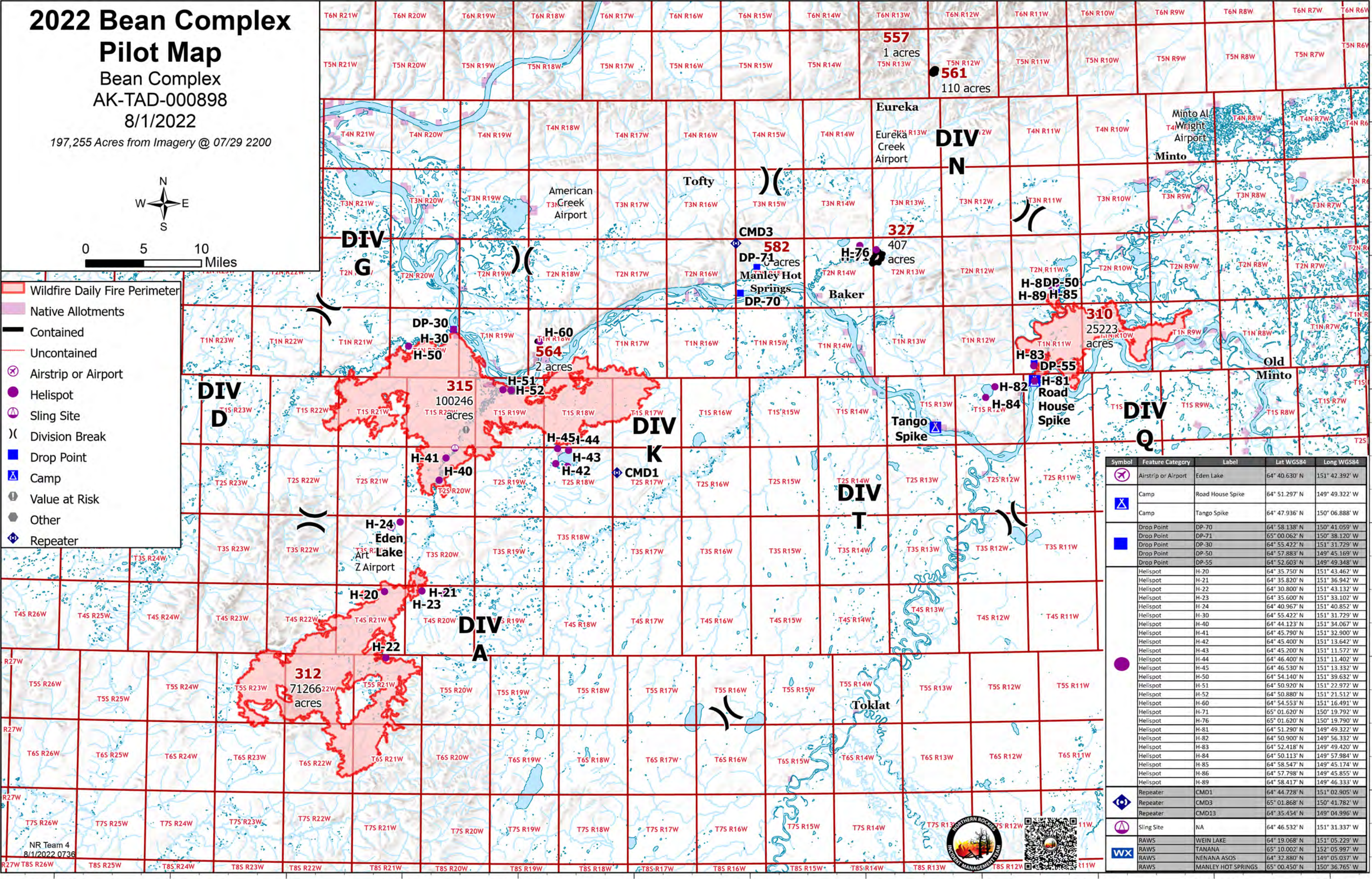
2022 Bean Complex Pilot Map

Bean Complex
AK-TAD-000898
8/1/2022

197,255 Acres from Imagery @ 07/29 2200



- ▬ Wildfire Daily Fire Perimeter
- Native Allotments
- Contained
- Uncontained
- ✈ Airstrip or Airport
- Helispot
- ⚙ Sling Site
-) Division Break
- Drop Point
- Camp
- ⚠ Value at Risk
- Other
- Ⓜ Repeater



Symbol	Feature Category	Label	Lat WGS84	Long WGS84
✈	Airstrip or Airport	Eden Lake	64° 40.630' N	151° 42.392' W
	Camp	Road House Spike	64° 51.297' N	149° 49.322' W
	Camp	Tango Spike	64° 47.936' N	150° 06.888' W
	Drop Point	DP-70	64° 58.138' N	150° 41.059' W
	Drop Point	DP-71	65° 00.062' N	150° 38.120' W
	Drop Point	DP-30	64° 55.422' N	151° 31.729' W
	Drop Point	DP-50	64° 57.883' N	149° 45.169' W
	Drop Point	DP-55	64° 52.603' N	149° 49.348' W
●	Helispot	H-20	64° 35.750' N	151° 43.462' W
●	Helispot	H-21	64° 35.820' N	151° 36.942' W
●	Helispot	H-22	64° 30.800' N	151° 43.132' W
●	Helispot	H-23	64° 35.600' N	151° 33.102' W
●	Helispot	H-24	64° 40.967' N	151° 40.852' W
●	Helispot	H-30	64° 55.422' N	151° 31.729' W
●	Helispot	H-40	64° 44.123' N	151° 34.067' W
●	Helispot	H-41	64° 45.790' N	151° 32.900' W
●	Helispot	H-42	64° 45.400' N	151° 13.642' W
●	Helispot	H-43	64° 45.200' N	151° 11.572' W
●	Helispot	H-44	64° 46.400' N	151° 11.402' W
●	Helispot	H-45	64° 46.530' N	151° 13.332' W
●	Helispot	H-50	64° 54.140' N	151° 39.632' W
●	Helispot	H-51	64° 50.920' N	151° 22.972' W
●	Helispot	H-52	64° 50.880' N	151° 21.512' W
●	Helispot	H-60	64° 54.553' N	151° 16.491' W
●	Helispot	H-71	65° 01.620' N	150° 19.792' W
●	Helispot	H-76	65° 01.620' N	150° 19.790' W
●	Helispot	H-81	64° 51.290' N	149° 49.322' W
●	Helispot	H-82	64° 50.900' N	149° 56.332' W
●	Helispot	H-83	64° 52.418' N	149° 49.420' W
●	Helispot	H-84	64° 50.113' N	149° 57.984' W
●	Helispot	H-85	64° 58.547' N	149° 45.174' W
●	Helispot	H-86	64° 57.798' N	149° 45.855' W
●	Helispot	H-89	64° 58.417' N	149° 46.333' W
Ⓜ	Repeater	CMD1	64° 44.728' N	151° 02.905' W
Ⓜ	Repeater	CMD3	65° 01.868' N	150° 41.782' W
Ⓜ	Repeater	CMD13	64° 35.454' N	149° 04.996' W
⚙	Sling Site	NA	64° 46.532' N	151° 31.337' W
WX	RAWS	WEIN LAKE	64° 19.068' N	151° 05.229' W
WX	RAWS	TANANA	65° 10.002' N	152° 05.997' W
WX	RAWS	NENANA ASOS	64° 32.880' N	149° 05.037' W
WX	RAWS	MANLEY HOT SPRINGS	65° 00.450' N	150° 36.765' W

NR Team 4
8/1/2022 0736

