



Incident Overview Map

Bean Complex
AK-TAD-000898
8/1/2022

197,255 Acres from Imagery @
07/29 2200

-  Wildfire Daily Fire Perimeter
-  Airstrip or Airport
-  Helispot
-  Division Break
-  Incident Command Post
-  Drop Point
-  Repeater
-  Paved Road
-  Dirt Road

NOTE:
- Cell/Radio reception is poor

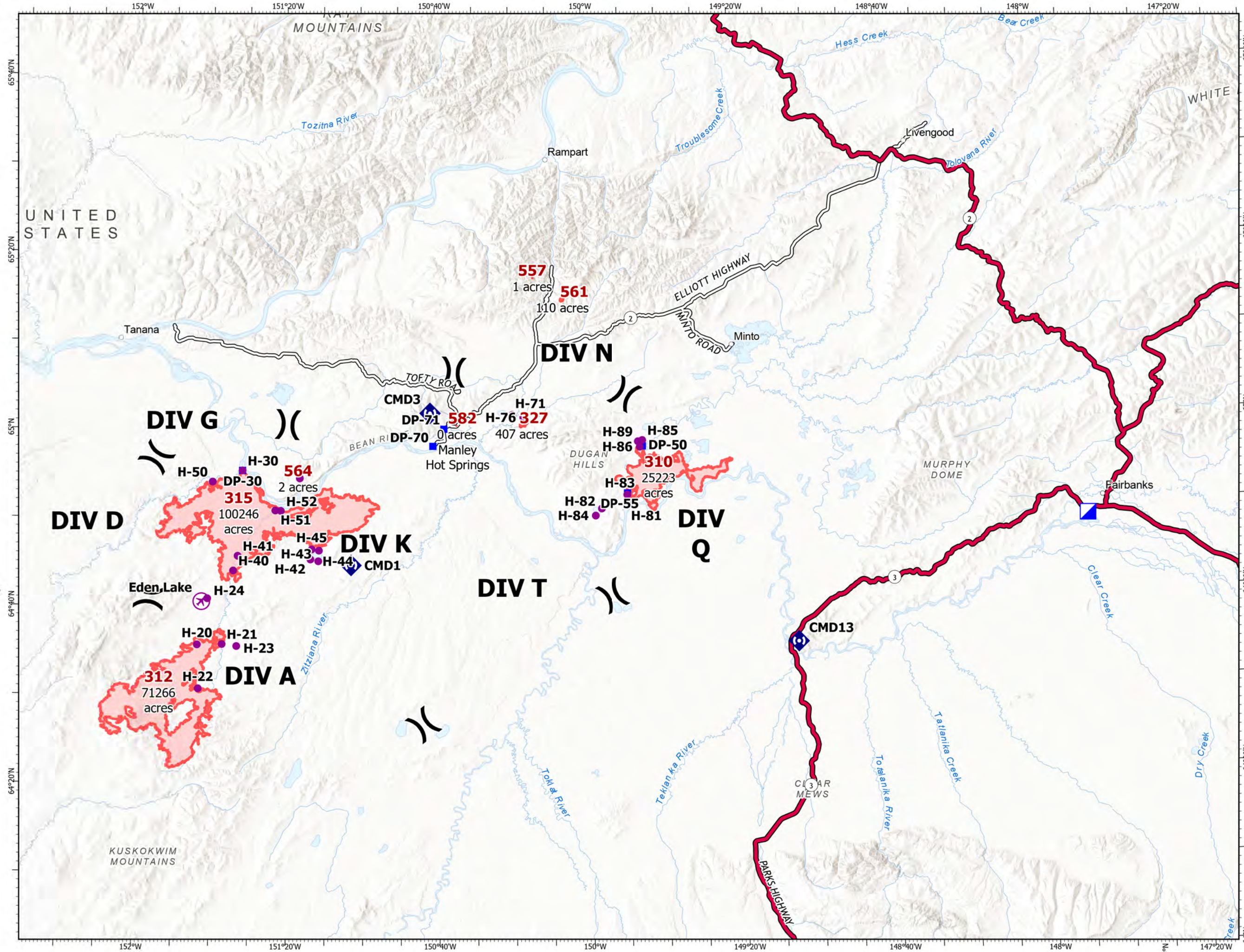
- For those with rental vehicles, check rental agreements, as roads are rough



0 5 10 20 Miles



NR Team 4
8/1/2022 0804



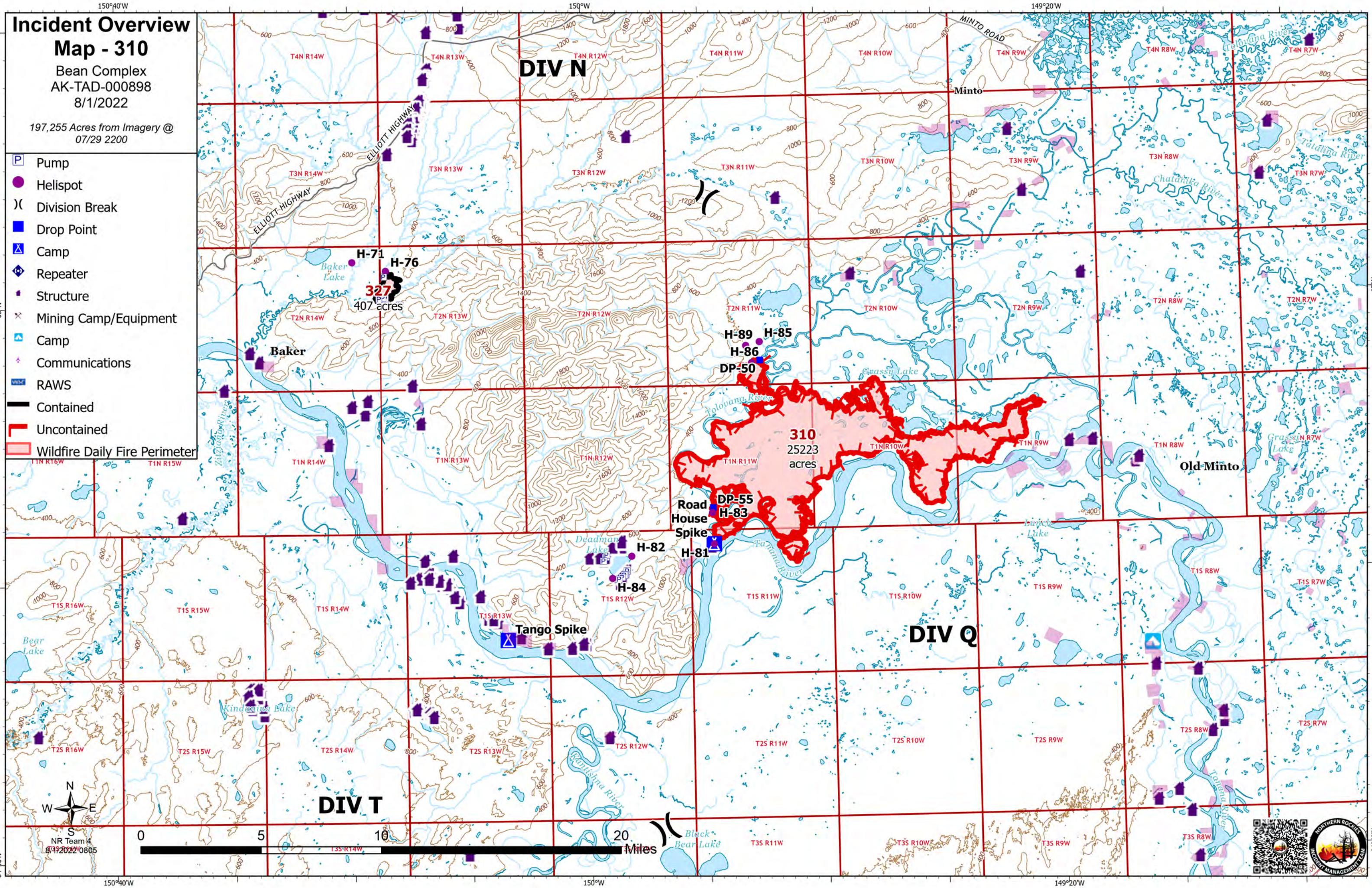
Incident Overview

Map - 310

Bean Complex
AK-TAD-000898
8/1/2022

197,255 Acres from Imagery @
07/29 2200

- Pump
- Helispot
- Division Break
- Drop Point
- Camp
- Repeater
- Structure
- Mining Camp/Equipment
- Camp
- Communications
- RAWS
- Contained
- Uncontained
- Wildfire Daily Fire Perimeter



65°N

64°40'N

150°W

150°W

149°20'W

149°20'W

65°N

64°40'N

NR Team 4
8/1/2022 0805



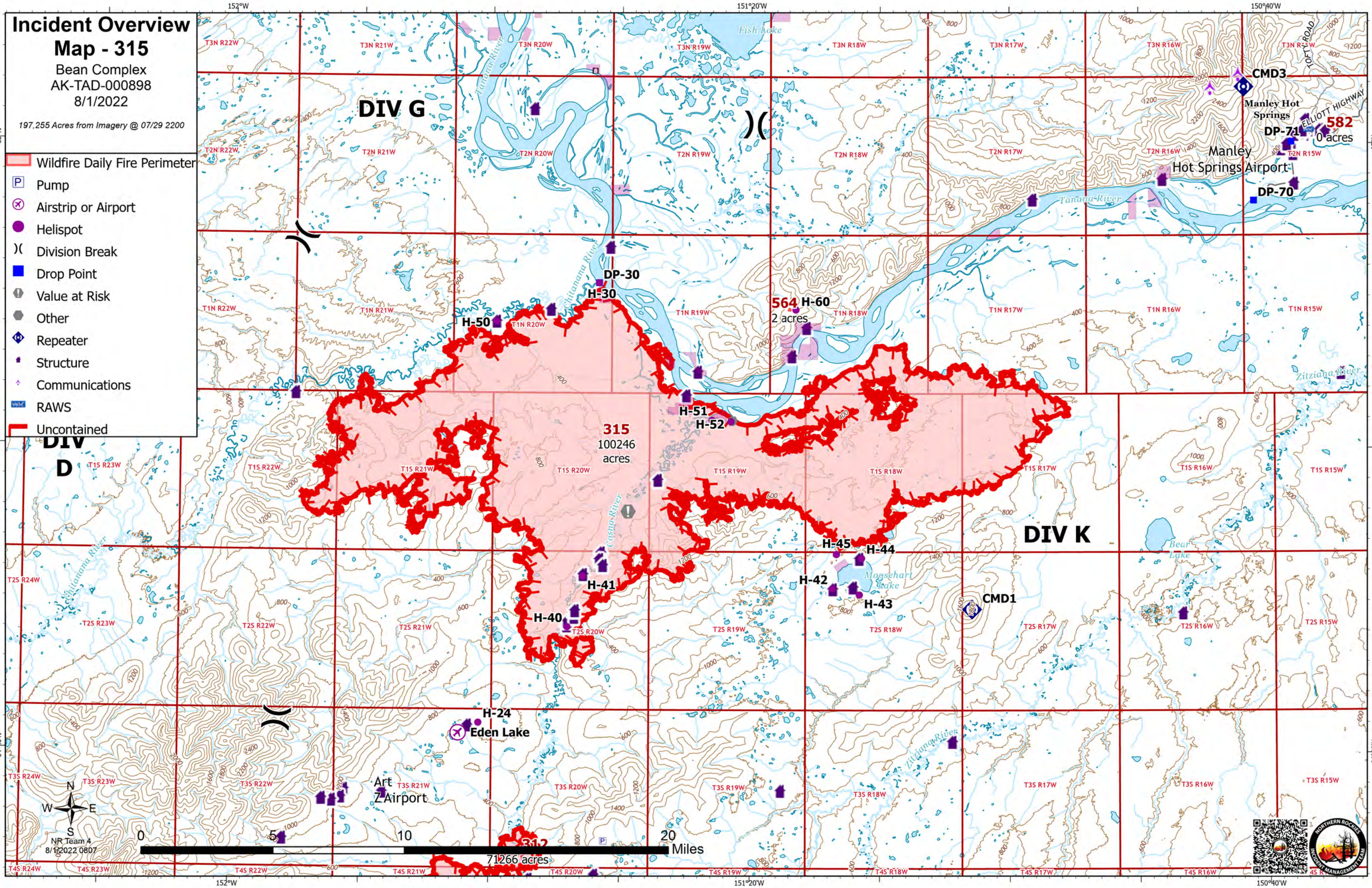
Incident Overview

Map - 315

Bean Complex
AK-TAD-000898
8/1/2022

197,255 Acres from Imagery @ 07/29 2200

- Wildfire Daily Fire Perimeter
- Pump
- Airstrip or Airport
- Helispot
- Division Break
- Drop Point
- Value at Risk
- Other
- Repeater
- Structure
- Communications
- RAWS
- Uncontained



NR Team 4
8/1/2022 0807



Incident Overview

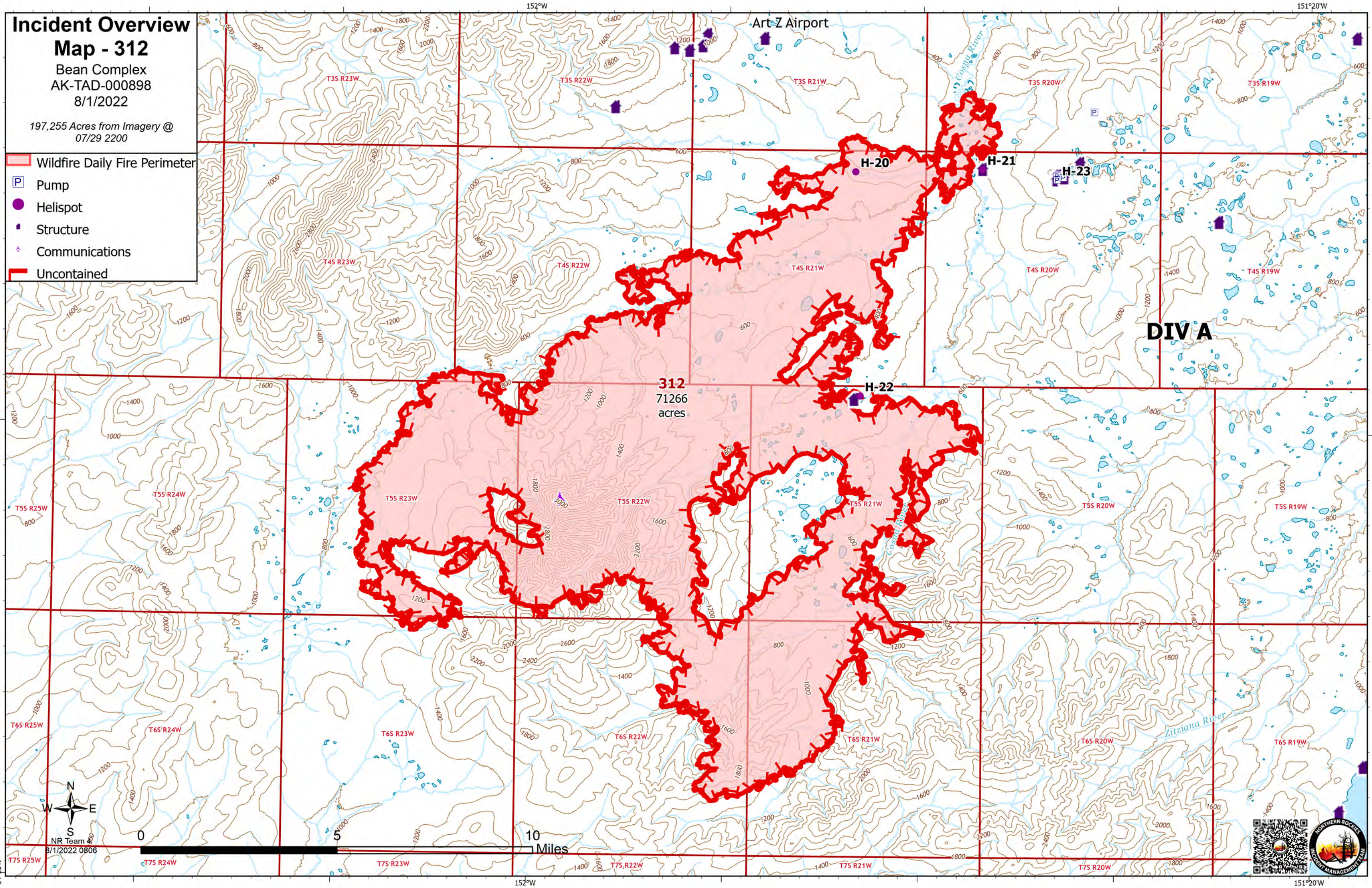
Map - 312

Bean Complex
AK-TAD-000898

8/1/2022

197,255 Acres from Imagery @
07/29 2200

- Wildfire Daily Fire Perimeter
- Pump
- Helispot
- Structure
- Communications
- Uncontained



312
71266
acres

DIV A



NR Team 4
8/1/2022 0806

